



PRODUCT CATALOG

NOVEMBER 2024



TABLE OF CONTENTS

CURB BOXES

Cast Iron 1" & 1¼" Eclipse Curb Boxes - I2BA or I2BB.....	2
Cast Iron 2½" Curb Boxes - I2B9	4
Bison 2½" Curb Boxes - P02ZH	6
Standard Plastic 2½" Curb Boxes - P2B.....	7
CIP 2½" Curb Boxes - CIP02ZH/CIP2B	8
Cast Iron 3" Curb Boxes - I3B	10
Standard Plastic 3" Curb Boxes - P3B.....	11

VALVE BOXES

Cast Iron 4¼" Roadway Boxes - I4B.....	16
Standard Plastic 4¼" Roadway Boxes - P4B	18
Cast Iron 5¼" Valve Box 2-Piece Assemblies - I5B	21
Cast Iron 5¼" Valve Box 3-Piece Assemblies - I5B5	26
Bison 5¼" Valve Boxes - P05ZH.....	33
Bison 5¼" Valve Box 2-Piece Assemblies - P05ZH	34
Bison 5¼" Valve Box 3-Piece Assemblies - P05ZH	35
Bison 5¼" Valve Box Components - P05	36
Standard Plastic 5¼" Valve Boxes - P5B.....	38
CIP 5¼" Valve Boxes - CIP5	41
Cast Iron 3-Piece 7" Valve Box - Reference Table	43
Cast Iron 7" Valve Box 3-Piece Assemblies - I7B	44

CIP 7" Valve Box 2- and 3-Piece Assemblies - CIP7B.....	45
Mark Series Valve Boxes - CUL10.....	47
Cast Iron 10" Valve Boxes - I8B199.....	49
Cast Iron 12" Square Valve Boxes - I8B.....	49
Standard Plastic 10" Valve Box #199 - P10B.....	50
Standard Plastic 12", 15", 18", & 24" Valve Boxes.....	51
Cast Iron Cleanout Boxes	52
Cast Iron Drip Boxes.....	53

METER PITS & METER BOXES

Injection-Molded Meter Pits - MMP.....	56
Rotational-Molded Meter Pits - PMP	59
Cast Iron Meter Frames - CULF	61
Cast Iron Meter Expander Rings & Monitor Ring.....	64
Cast Iron Meter Lids - IFL180.....	65
Maverick Composite Water Meter Lids.....	66
Cast Iron Water Meter Box Assemblies - IMBX	68

SECURITY & SAFETY

Carbon Steel Valve Sentinels - BGB	72
Cast Iron Locking Lids for 5¼" Valve Boxes - I5LB	73
Stabilizers - ADP	74
Leak Detection Lids & Inserts for 5¼" Valve Boxes	76
Standard Plastic 2½" Cathodic Protection Boxes - P2B.....	77
Standard Plastic 2½" Cathodic Protection Test Boxes - P2B	79
Standard Plastic 4" Cathodic Protection Test Boxes - P4B	81
Standard Plastic 5¼" Cathodic Protection Test Boxes - P5B	84
Line Markers - CTCUL	86
Protection Sleeves - P2SL.....	87

TOOLS & ACCESSORIES

Lid Lifters - ETD	90
Pentabolt Wrench/Hand Keys - BTT	91
Replacement 2" Operating Nut - BTTALM	91
Standard Plastic Adjustable Valve Box Adapter Top Hat	91

WARRANTY

Commitment to Our Customers	92
Limited Warranty	92

All measurements are in inches or pounds unless indicated otherwise. Listed weights can vary by up to a pound.

NOTES:



BINGHAM & TAYLOR

Proudly Made in the USA

CURB BOXES

*All measurements in tables are in **inches** or **pounds** unless indicated otherwise.*

1" & 1¼" CURB BOXES

Cast Iron 1" & 1¼" Eclipse Curb Boxes - I2BA or I2BB

Complete Eclipse box consists of a cast iron lid (Type A with brass plug or Type B two-hole lid), a steel pipe top section, cast iron bottom section, and rod assembly. Curb boxes have an adjustment of 12".

- Type A Eclipse Curb Box available in 1" and 1¼" diameter.
- Type B Eclipse Curb Box available in 1" diameter only.

LID OPTIONS

- A-1 Style: Lid lettering options include Water, Sewer, and Fire
- B-1 Style: Lid lettering options include Water and Sewer

BOTTOMS

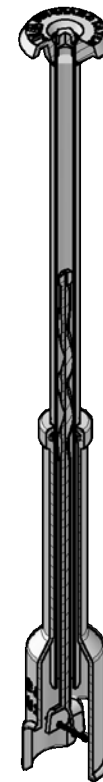
- Can be ordered with a standard bottom section to accommodate 1" - 1¼" curb stops or with an enlarged bottom section to accommodate 1½" - 2" curb stops.
- An enlarged base (CUL2BEC14E) can be used with the standard bottom section to adapt the curb box to accept 1½" - 2" curb stops.

ROD & PIN ASSEMBLY

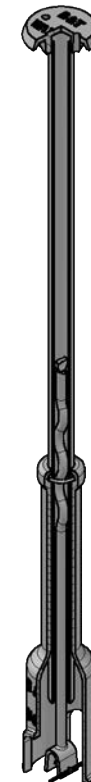
- The permanent steel rod assembly is forged at the top to accommodate a standard curb key. Bottom consists of a welded fitting or clevis.
- Rods are available in "S" point or with a welded washer to hold rod tip centered in the steel pipe top section
- Rods are available in carbon steel (⅝" diameter) or stainless steel (½" & ⅝" diameter)

CURB BOX SLEEVE

- A cast iron sleeve is available which provides a convenient method of installing the Type B curb boxes in sidewalk installations (concrete)



I2BA
Standard Eclipse
Curb Box with
Type A lid



I2BB
Standard Eclipse
Curb Box with
Type B lid



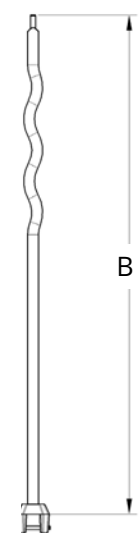
Type A
1" & 1¼"



Type B
1" Only



Straight Rod
Fig. No. 4901-R



Curved Rod
Fig. No. 4901-RS

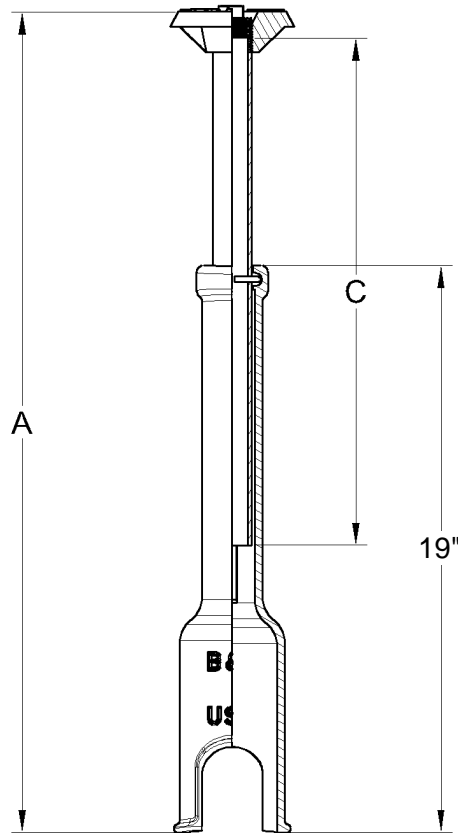


CUL2BB1SLEEVE
Curb Box Sleeve

1" & 1¼" CURB BOXES

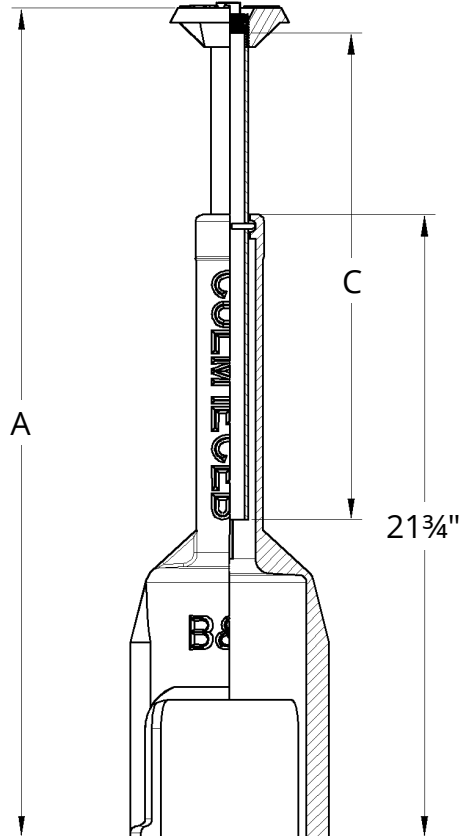
Cast Iron 1" & 1¼" Eclipse Curb Boxes

TO ORDER - SPECIFY: Extension Range, Lid Type, Rod Type, and Lid Lettering.



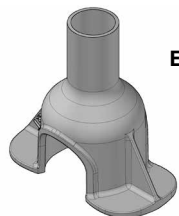
Standard Eclipse Box

Fig. No. E-100 (1") and E-125 (1¼")



Eclipse Box with Enlarged Bottom Section

Fig. No. E-100EB (1") & E-125EB (1¼")



Eclipse Enlarged Base

CUL2BEC14E

Fig. No. 4980EC

Type A and B for 1" (Fig. No. E-100)

EXT. RANGE DIM. A (FT)	ROD LENGTH DIM. B	PIPE LENGTH DIM. C	TOTAL WEIGHT
1.5-2.5	18	11	15.0
2.0-3.0	21	17	16.0
2.5-3.5	27	23	16.5
3.0-4.0	33	29	17.0
3.5-4.5	39	35	18.0
4.0-5.0	45	41	19.0
4.5-5.5	51	47	20.0
5.0-6.0	57	53	21.0
5.5-6.5	63	59	22.0
6.0-7.0	69	65	23.0
6.5-7.5	75	71	24.0
7.0-8.0	81	77	25.0

Type A 1¼" (Fig. No. E-125)

EXT. RANGE DIM. A (FT)	ROD LENGTH DIM. B	PIPE LENGTH DIM. C	TOTAL WEIGHT
1.5-2.5	18	13	15.0
2.0-3.0	21	19	16.0
2.5-3.5	27	25	16.5
3.0-4.0	33	33	17.0
3.5-4.5	39	37	18.0
4.0-5.0	45	43	19.0
4.5-5.5	51	49	20.0
5.0-6.0	57	55	21.0
5.5-6.5	63	61	22.0
6.0-7.0	69	67	23.0
6.5-7.5	75	73	24.0
7.0-8.0	81	79	25.0

2½" CURB BOXES

Cast Iron 2½" Curb Boxes - I2B9

A 2½" cast iron curb box consists of lid with pentagon head bolt, top section, and bottom section.

- Available in screw-type adjustment with certain sizes available in slide-type adjustment
- Lid lettering options include WATER (W), GAS (G), SEWER (S), FIRE (F), IRRIGATION (IRR) or your own customization
- Choose between top & lid in Old Style (OS), New Style (NS), and New Style Flush (NSF)
- Stationary rod, ring, and pin available

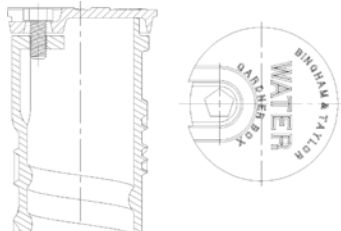
TO ORDER I2B9 - SPECIFY: Adjustment Type, Lid Lettering, and Top & Lid Style.

Repair lids found on pg 9. Security & Safety products start on pg 71. Tools & Accessories start on pg 89.

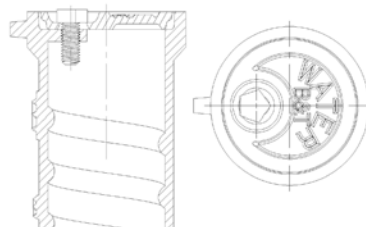
Cast Iron 2½" Curb Box Assemblies

PART SERIES		EXTENSION RANGE DIM. A	TOP SECTION WITH LID			BOTTOM SECTION				TOTAL WEIGHT (W/LID)
SCREW-TYPE	SLIDE-TYPE		NO.	WT.	DIM. B	NO.	WT.	DIM. C	DIM. D	
I2B93D	I2B93D-S	33-46	D	16.1	20.0	93	15.8	28.0	6.5	31.9
I2B93E	I2B93E-S	33-50	E	19.6	23.5	93	15.8	28.0	6.5	35.4
I2B94D	I2B94D-S	40-56	D	16.1	20.0	94	22.3	38.0	6.5	38.4
I2B94E	I2B94E-S	40-60	E	19.6	23.5	94	22.3	38.0	6.5	41.9
I2B94F	I2B94F-S	40-64	F	26.1	28.0	94	22.3	38.0	6.5	48.4

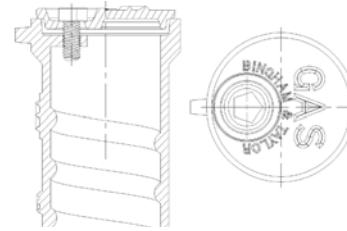
Cast Iron 2½" Curb Boxes Top Section & Lid Styles



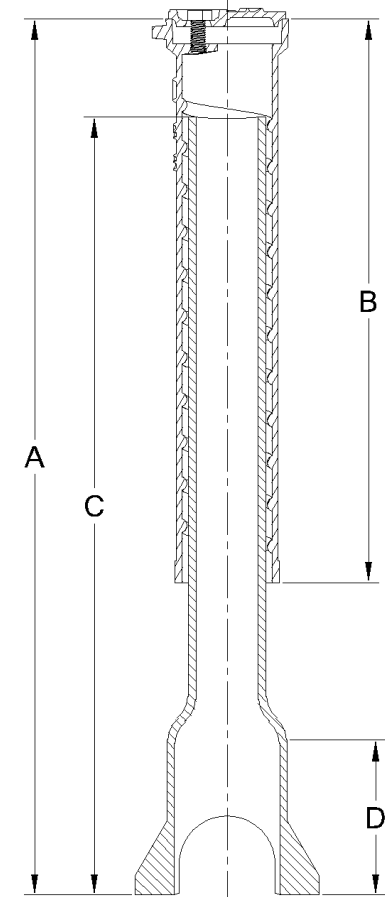
Old Style Top & Lid (E-style only)
Fig. No. 4901-A



New Style Flush Top & Lid
Fig. No. 4901-B



New Style Top & Lid
Fig. No. 4901-C



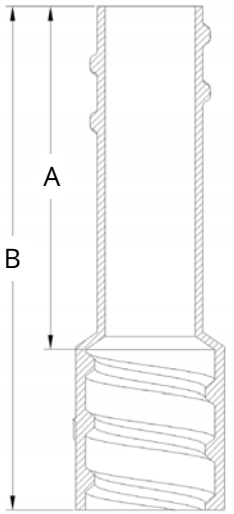
I2B9
Screw-type Assembly
Fig. No. 4901

2½" CURB BOXES

Cast Iron Extensions for 2½" Curb Boxes

- Used to extend total length of the curb box
- Extensions are stackable to get to desired length

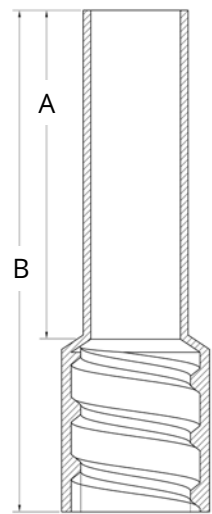
Screw-type



CUL2E

Fig. No. 4901-X

Slide-type



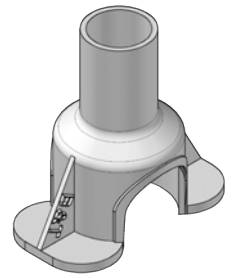
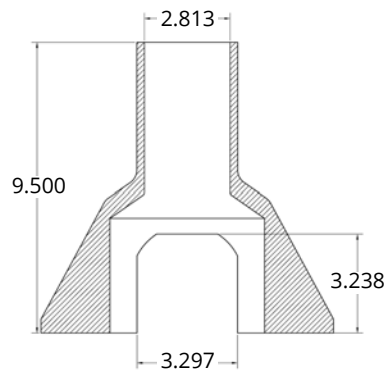
CUL2E-S

Fig. No. 4901-X-S

PART #		INCREASES LENGTH DIM. A	OVERALL LENGTH DIM. B
SCREW-TYPE	SLIDE-TYPE		
CUL2E151	CUL2E151S	9½	13
CUL2E152	CUL2E152S	16¾	20¾

Cast Iron Enlarged Base for 2½" Curb Boxes

- Used with complete service box for curb stops up to 2"
- Increases box length 6"



CUL2BA14E

Fig. No. 4980

2½" CURB BOXES

Bison 2½" Curb Boxes - P02ZH

Our exclusive Bison products deliver a thick-walled ABS plastic lightweight, high-strength alternative to traditional cast iron. Bison curb boxes consist of a thick-walled plastic top section with cast iron rim and lid and a thick-walled plastic bottom section.

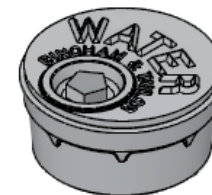
- Available in screw-type with certain sizes available in slide-type
- Bottom sections have 001 bell style
- Lid lettering options include WATER (W), GAS (G), SEWER (S), FIRE (F), IRRIGATION (IRR) or your own customization
- Choose between New Style or New Style Flush (F) lid styles
- Bison bottom sections can be used with any cast iron top section
- Carbon steel or stainless-steel rods and centering rings also available

TO ORDER P02ZHC - SPECIFY: Adjustment Type, Lid Lettering, and Top/Lid Style.
Repair lids found on pg 9. Security & Safety products start on pg 71. Tools & Accessories start on pg 89.

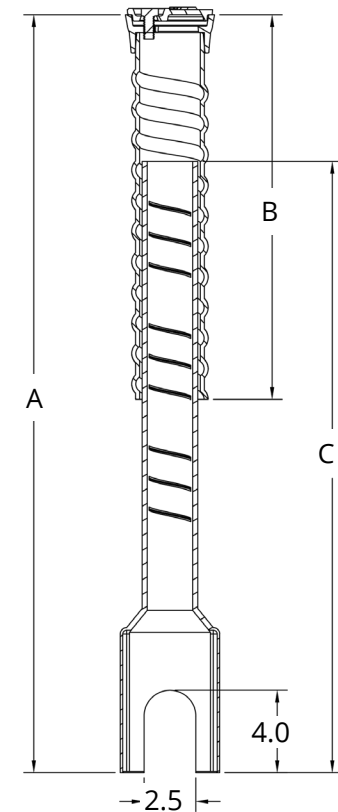
PART SERIES		EXTENSION RANGE DIM. A	TOP & RIM LENGTH DIM. B	BOTTOM LENGTH DIM. C
SCREW-TYPE	SLIDE-TYPE			
P02ZHC2128	-	21-28	12	18
P02ZHC2534	-	25-34	12	24
P02ZHC2740	-	27-40	18	24
P02ZHC3146	-	31-46	18	30
P02ZHC3352	-	33-52	24	30
P02ZHC3958	-	39-58	30	30
P02ZHC3964	-	39-64	30	36
P02ZHC4976	P02ZHS4976	49-76	30	48
P02ZHC5582	P02ZHS5582	55-82	30	54



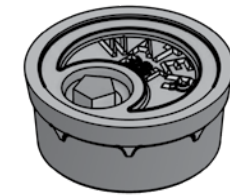
Bison 2½" Curb Box with P200 Rim & New Style Lid



2½" P200 Rim & New Style Lid



Bison Screw-type Curb Box



2½" P200 Rim & New Style Flush Lid

2½" CURB BOXES

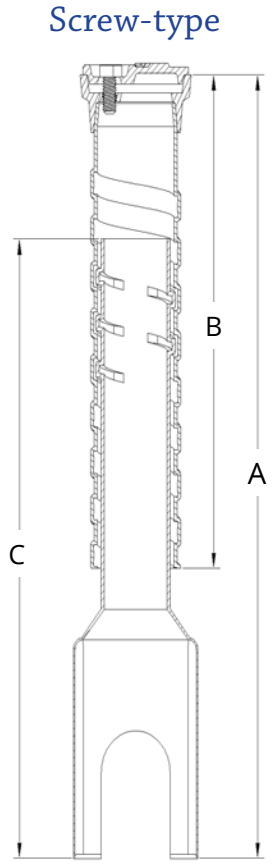
Standard Plastic 2½" Curb Boxes - P2B

Standard plastic curb boxes are made from high-impact-resistant, standard-thickness ABS plastic. They include a standard plastic top section with a cast iron rim and lid, which provide strength and durability and aid in location, paired with a standard plastic bottom section to make a complete curb box.

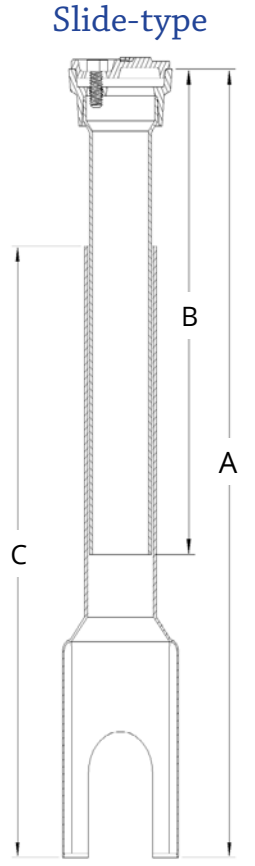
- Available in screw-type or slide-type adjustment
- For round top boxes choose between New Style (NS) or New Style Flush (NSF). Square top boxes are available with Drop-in flush fitting lids only.
- Lid lettering options include WATER (W), GAS (G), SEWER (S), FIRE (F), IRRIGATION (IRR) or your own customization
- Comes standard with a 001 bell bottom section; additional bottoms available

TO ORDER P2B - SPECIFY: Adjustment Type, Lid/Rim Shape, and Lid Lettering. Repair lids found on pg 9. Security & Safety products start on pg 71. Tools & Accessories start on pg 89.

PART SERIES		EXTENSION RANGE DIM. A	TOP LENGTH DIM. B	BOTTOM LENGTH DIM. C
SCREW-TYPE	SLIDE-TYPE			
P2B89A	P2B200	20-26	10	18
P2B90B	P2B201	20-28	12	18
P2B91C	P2B202	24-32	16	18
P2B92C	P2B203	26-38	16	24
P2B92D	P2B204	26-42	20	24
P2B93D	P2B205	32-48	20	30
P2B93E	P2B206	32-54	26	30
P2B94E	P2B207	38-60	26	36
P2B95E	P2B208	44-66	26	42
P2B100E	P2B209	50-70	26	48
P2B100F	P2B210	56-76	26	54
P2B100G	P2B211	62-82	26	60



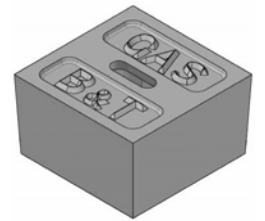
2½" Screw-type Curb Box
Fig. No. 250



2½" Slide-type Curb Box
Fig. No. 200



Round Lid



Square Lid

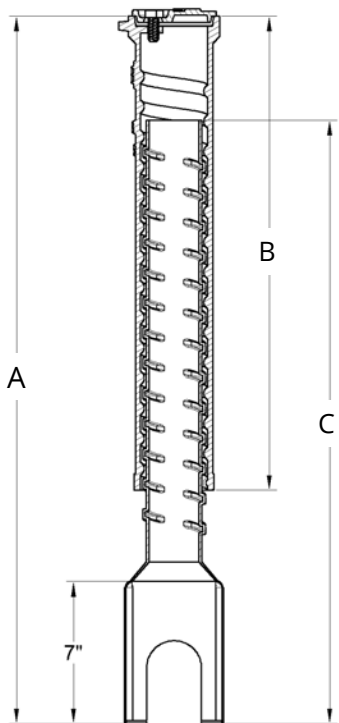
2½" CURB BOXES

CIP 2½" Curb Boxes - CIP02ZH/CIP2B

CIP is a combination of cast iron and plastic. A CIP curb box consists of cast iron lid, pentagon head bolt, cast iron top section and standard plastic bottom section

- Combine any cast iron top section with any standard plastic or Bison bottom section
- Available in screw-type or slide-type adjustment
- Lid lettering options include WATER (W), GAS (G), SEWER (S), FIRE (F), IRRIGATION (IRR) or your own customization

TO ORDER - SPECIFY: Part Series, Lid Lettering, and Top/Lid Style.
Security & Safety products start on pg 71. Tools & Accessories start on pg 89.



CIP 2½" Bison or Standard Plastic Curb Box

Standard Plastic Extensions for Use with Standard Plastic 2½" Curb Boxes

- Used to extend total length of the curb box
- Extensions are stackable to get to desired length
- Available in screw-type or slide-type

PART #		INCREASES LENGTH
SLIDE-TYPE	SCREW-TYPE	
P2E212	P2E151	10
P2E218	P2E152	16
P2E224	P2E153	22
P2E230	P2E154	28

Additional lengths available in 6" increments.



Screw-type Extension

Fig. No. 250X
(left)



Slide-type Extension

Fig. No. 200X
(right)

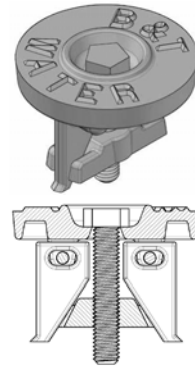
CIP WITH BISON PART SERIES	ADJUSTMENT TYPE	EXTENSION RANGE DIM. A	TOP SECTION WITH LID		BOTTOM SECTION DIM. C	TOTAL WEIGHT (W/LID)
			NO.	DIM. B		
CIP02ZHC3146	Screw	31-46	D	16.1	24	18.00
CIP02ZHC3757	Screw	37-57	E	16.1	30	26.00
CIP02ZHC4161	Screw	41-61	F	19.6	30	30.75
CIP02ZHC4363	Screw	43-63	E	19.6	36	26.40
CIP02ZHS4565	Slide	45-65	F	26.1	36	30.75

CIP WITH STANDARD PLASTIC PART SERIES	ADJUSTMENT TYPE	EXTENSION RANGE DIM. A	TOP SECTION WITH LID		BOTTOM SECTION DIM. C	TOTAL WEIGHT (W/LID)
			NO.	DIM. B		
CIP2B93D	Screw	35-48	D	16.1	30	18.6
CIP2B93E	Screw	35-52	E	19.6	30	22.1
CIP2B94E	Screw	40-58	E	19.6	36	22.6
CIP2B94F	Screw	40-64	F	26.1	36	29.1
CIP2B100F	Screw	45-76	F	26.1	48	30.1

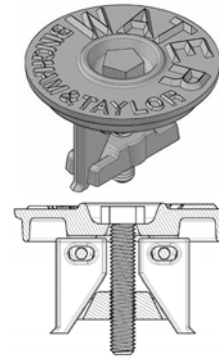
2½" CURB BOXES

Cast Iron Repair Lids for Any 2½" Curb Box

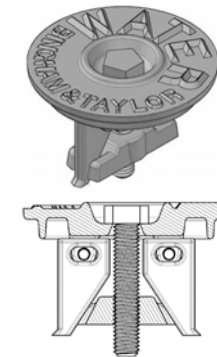
- For use with cast iron, Bison, standard plastic, and CIP curb boxes.
- Cast iron repair lids solve the problem of lost lids, broken lugs, or broken tops. The jaws of the repair lid expand to bear against the inside of the curb box.
- Repair lids can be substituted for our standard curb box lids.



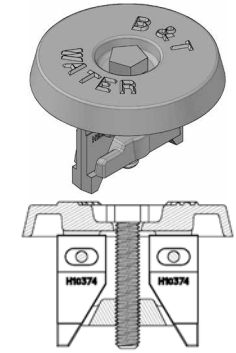
Flush New Style
Fig. No. 4901



New Style
Fig. No. 4901-NSR



Old Style
(For use with Centering Ring)
Fig. No. 4901-OSR



Old Style
Fig. No. 10374-OSR

Additional Rims & Lids for Standard Plastic 2½" Curb Boxes

Cast iron locking lids and rims provide security for peace of mind.



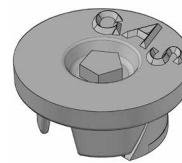
NFG Lid
Drop-turn
Locking Lid
Fig. No. 230-L



NFG Rim
Drop-turn
Locking Rim
Fig. No. 230-L



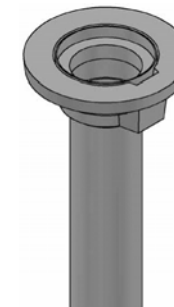
200NFG LNG*
Drop-turn Long
Locking Rim
Fig. No. 200



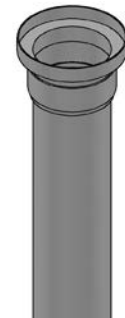
CNGF
Flush Lid
Fig. No. P200



200CNG HVY*
Heavy-duty Rim
For Asphalt Installs
Fig. No. 200HW



200LGE
Standard Plastic Top with Heavy
Weight Rim for Concrete Installs
Fig. No. 240HW



200CNG
Standard Plastic
Top Light Duty
Fig. No. 240

Cast iron flush lid drops into your choice of a heavy-duty cast iron rim, a *heavy-weight standard plastic top section with cast iron rim, or a standard plastic top section.

*Indicates H20 rating for highway use.

3" CURB BOXES

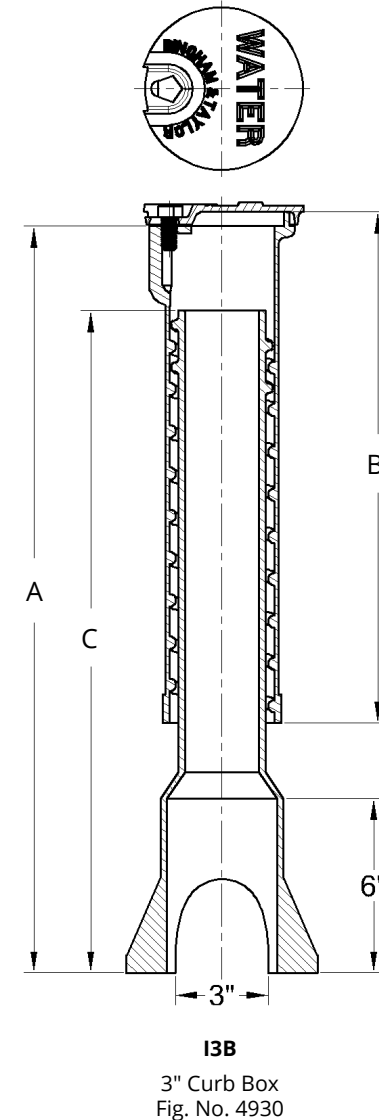
Cast Iron 3" Curb Boxes - I3B

A 3" cast iron curb box consists of lid with pentagon head bolt, top section, and bottom section.

- Curb box with 3" shaft for services up to 1½"
- Old Style lid only (lid fits over the outside of the rim)
- Available in screw-type adjustment only
- Lid lettering available in WATER (W), GAS (G), or SEWER (S)
- Extensions and repair lids available for the 3" Curb Box

TO ORDER I3B - SPECIFY: Part Series and Lid Lettering. Repair lid found on pg 13.
Security & Safety products start on pg 71. Tools & Accessories start on pg 89.

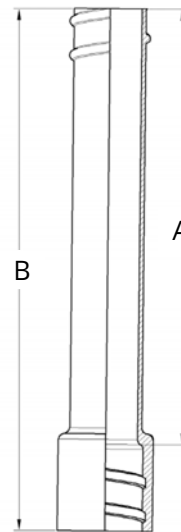
PART SERIES	EXTENSION RANGE DIM. A	TOP SECTION WITH LID			BOTTOM SECTION			TOTAL WEIGHT (W/LID)
		NO.	WT.	DIM. B	NO.	WT.	DIM. C	
I3B2	24-39	CUL3T9	18.0	19.6	CUL3B2	23.0	23.0	32.7



Cast Iron Extension for 3" Curb Boxes

- Used to extend total length of the curb box
- Extensions are stackable to get to desired length
- Available in screw-type adjustment only

PART #	INCREASES LENGTH DIM. A	OVERALL LENGTH DIM. B	WEIGHT
CUL3E155	20.0	22.75	13.1



3" CURB BOXES

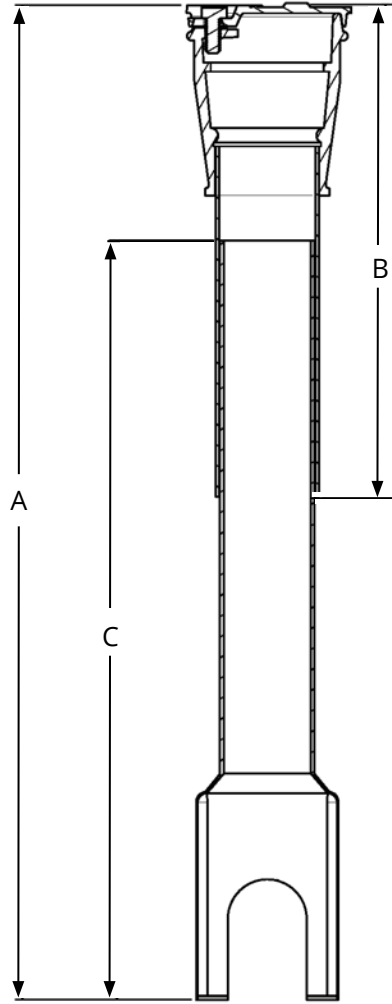
Standard Plastic 3" Curb Boxes - P3B

Standard plastic curb boxes are made from high impact resistant, standard-thickness, ABS plastic. These curb boxes consist of a standard plastic top section with cast iron rim and lid which provide strength, and durability. The cast iron rim also make it easy to locate in the field. The top sections are paired with a plastic bottom section to make a complete curb box.

- Available in slide-type adjustment only
- Lid lettering options include WATER (W), GAS (G), SEWER (S), CP Test (CPT), or Test (T)
- Standard cast iron rim (306) offers 6" depth. Additional rims and lids available.
- Comes standard with a 001 bell bottom section; additional bottoms available

TO ORDER P3B - SPECIFY: Part Series, Rim & Lid Style, Bell Style, and Lid Lettering. Repair lid found on pg 13. Security & Safety products start on pg 71. Tools & Accessories start on pg 89.

PART SERIES	EXTENSION RANGE DIM. A	TOP LENGTH DIM. B	BOTTOM LENGTH DIM. C
P3B301	24-28	12	18
P3B302	32-39	12	26
P3B303	42-48	16	36
P3B304	42-62	28	36



P3B
3" Curb Box Slide-type
Fig. No. 300

Standard Plastic Extension for 3" Curb Boxes

- Used to extend total length of the curb box
- Extensions are stackable to get to desired length
- Available in slide-type adjustment only

PART #	INCREASES LENGTH	OVERALL LENGTH
P3E314	12	14
P3E320	18	20
P3E326	24	26
P3E332	30	32

Additional lengths available in 6" increments



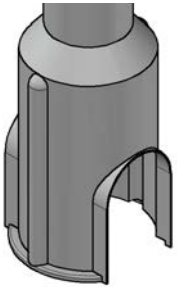
P3E
3" Curb Box Slide-type
Extension

2½" & 3" CURB BOXES

Standard Plastic Bottoms for Standard Plastic 2½" & 3" Curb Boxes

All bottoms here are available in either screw-type or slide-type adjustment

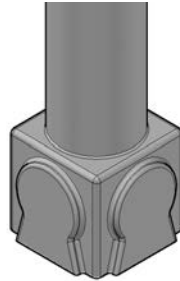
001



Standard Arch Fits:

½" - 1¼" Plastic or Steel Valves

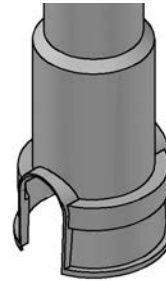
004



Fits:

Perfection ¾" - 1¼" Plug Valve
Dresser ¾" 175 G.T.O.

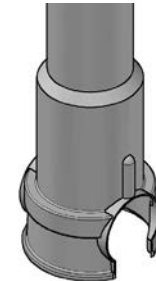
005



Fits:

Inner-Tite Posi Lock 1¼" 125 G.T.O.
Mueller 125 1" Gas
Kerotest 1" - 1¼" Plastic Valve
Kerotest 2" Plug Valve
Lyll 1¼" P.E. Ball Valve
Poly ¾" - 1¼" Plug Valve

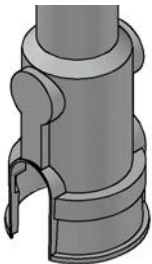
006



Fits:

Dresser 1¼" 175 G.T.O.
Handley 1" - 1¼" Plug Valve
Kerotest 1¼" Plastic Valve
Kerotest 2" Plug Valve
Lyll ½"- 1¼" Plastic Valve
Poly ¼" - 1¼" Plug Valve

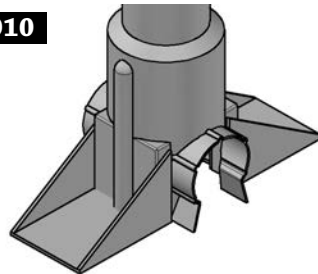
008



Fits:

Dresser ¾" - 1" 175 G.T.O.
Inner-Tite 1" G.T.O.
Inner-Tite 1¼" Posi Lock 12560
Lyll ½" - 1" Ball Valve
Mueller 1" 125 "GAS"
Poly ¾" - 1¼" Plug Valve
½" - 1¼" Plastic or Steel Valve

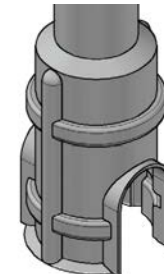
010



Fits:

Inner-Tite 1" 125 GO
Inner-Tite 1¼" 125 GO
Kerotest ¾" - 1¼" Plastic Valve
Lyll 1¼" Ball Valve
Mueller 1" 125 GO
Perfection 1¼" Plastic Valve

011



Fits

½" - 1¼" Poly & Steel Valves

013



Minneapolis Style Bell

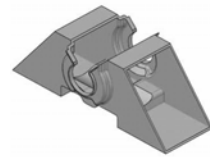
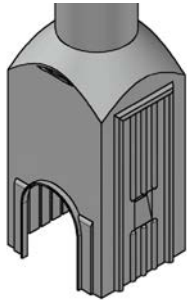
Screw on top of operating nut
For ½" - 1¼" Brass Valves

2½" & 3" CURB BOXES

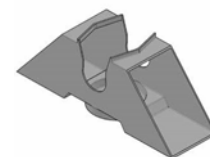
Standard Plastic Bottoms for Standard Plastic 2½" & 3" Curb Boxes (cont.)

All bottoms here are available in either screw-type or slide-type adjustment

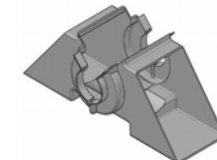
014



BTVS014N
Fits: Poly & Kerotest
½" - 1¼" Plastic Valves



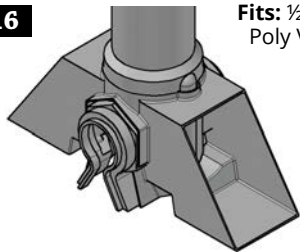
BTVS014P
Fits: Perfection
½" - 1¼" Plastic Valves



BTVC23014B
Fits: Broen
½" - 1¼" Plastic Valves

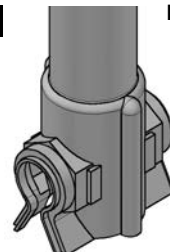
Use with Bingham & Taylor Valve Supports

016



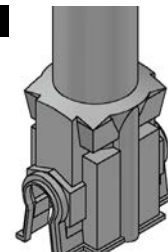
Fits: ½" - 1¼"
Poly Valves

017



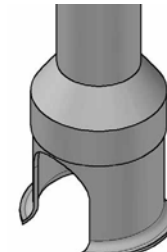
Fits: ½" - 1¼"
Poly Valves

021



Fits: ½" - 1¼"
Poly Valves

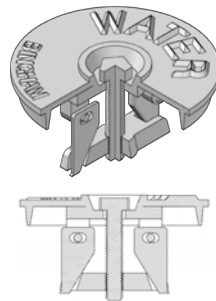
022



**Heavy-duty Standard
Arched Pattern**
Fits: ½" - 1¼" Poly and
Steel Valves

Cast Iron Repair Lid for 3" Curb Boxes

- Cast iron repair lids solve the problem of lost lids, broken lugs, or broken tops. The jaws of the repair lid expand to bear against the inside of the curb box.
- Repair lids can be substituted for our standard curb box lids.



13LBWREPOB
Old Style Repair Lid
Fig. No. 4930-OSR

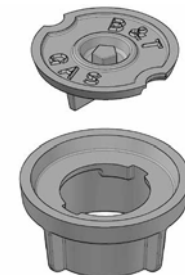
Cast Iron Rims & Lids for Standard Plastic 3" Curb Boxes



306
Standard Rim & Lid



334
Drop-in Rim & Lid



334 DT
Drop-turn Locking Rim & Lid

NOTES:



BINGHAM & TAYLOR

Proudly Made in the USA

VALVE BOXES

*All measurements in tables are in **inches** or **pounds** unless indicated otherwise.*

4 1/4" ROADWAY BOXES

Cast Iron 4 1/4" Roadway Boxes - I4B

A 4 1/4" cast iron roadway (valve) box consists of a lid, a top section, and a bottom section.

- Designed for use both in the roadway and behind the curb for valves up to 3 inches
- Available with standard arched or closed bottom covering the operating nut of small valves
- Choice of standard round or square lid with lettering options including WATER (W), GAS (G), SEWER (S), FIRE (F) or your own customization
- Available with square head top section and risers
- Cast iron top sections can be used in configuration with any standard plastic bottom sections.

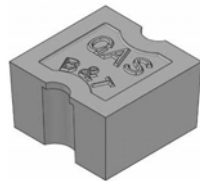
TO ORDER I4B- SPECIFY: Part Series, Bottom Style, Lid Shape, Bell Style, Lid Lettering. Paving risers and extensions found on pg 17. Security & Safety products start on pg 71. Tools & Accessories start on pg 89.

PART SERIES		EXTENSION RANGE DIM. A	TOP SECTION WITH LID			BOTTOM SECTION			TOTAL WEIGHT (W/LID)
SCREW-TYPE	SLIDE-TYPE		NO.	WT.	DIM. B	NO.	WT.	DIM. C	
I4B140Q	I4B140SQ	18-24	Q	25.4	12.0	140	16.0	14.75	41.4
I4B141Q	I4B141SQ	22-28	Q	25.4	12.0	141	23.0	18.00	48.4
I4B142Q	I4B142SQ	24-30	Q	25.4	12.0	142	29.0	22.50	54.4
I4B142R	I4B142SR	27-39	R	41.0	20.5	142	29.0	22.50	70.0
I4B143R	I4B143SR	34-38	R	41.0	20.5	143	33.0	30.50	74.0
I4B144R	I44SRI4B	39-54	R	41.0	20.5	144	35.0	36.25	76.0
I4B144RR	I4B144RRS	39-60	RR	45.0	26.0	144	35.0	36.25	80.0

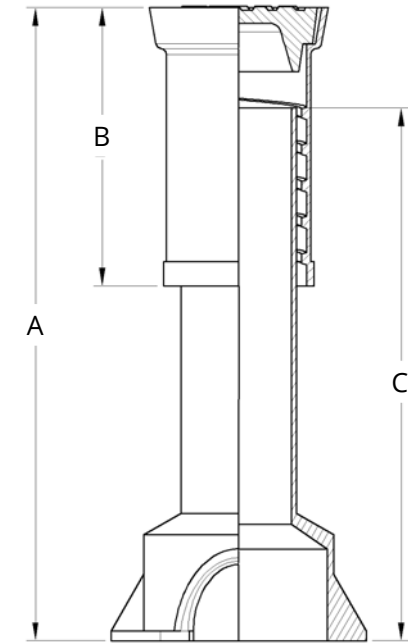
Note: Part series numbers with 'Q' signify a square box. Part series numbers with an 'R' signify a round box.



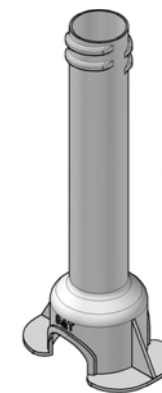
CUL4LWRD
Standard Round Lid
with WATER lettering



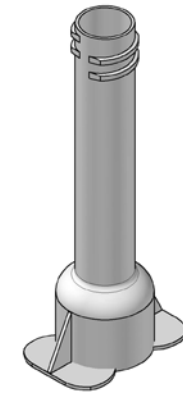
CUL4LGSQ
Square Lid with
GAS lettering



I4B
Fig. No. 4903



**Standard Open
Arch Bottom**



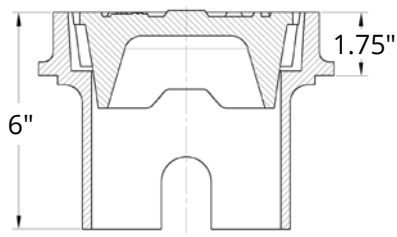
**Closed Arch
Bottom**

4 1/4" ROADWAY BOXES

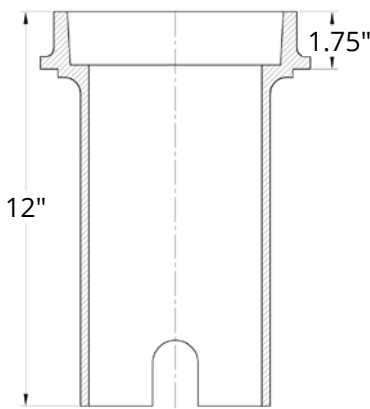
Cast Iron Paving Risers (Adapters) for 4 1/4" Roadway Boxes - CUL4A

- Used when repaving requires additional height to existing box
- Uses existing lid or special non-tip lid with longer skirt
- Can be used with any 4 1/4" box

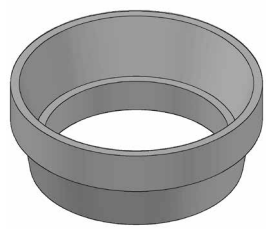
PART #	TYPE	RISE HEIGHT
CUL4A41/4	Fixed	1 3/4"
CUL4A12	Adjustable	1 3/4" up to 8"
CUL4A1	Stackable	1"



CUL4A41/4
Fig. No. 4903-A



CUL4A12
Fig. No. 4903-B

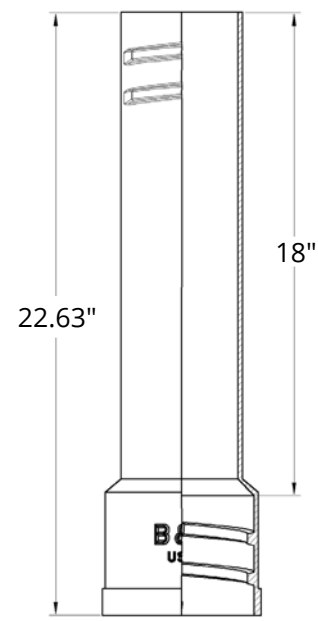


CUL4A1
Fig. No. 4903-C

Cast Iron Extensions for 4 1/4" Roadway Boxes - CUL4E49B

- Used to extend total length of the valve box
- Extensions are stackable to achieve to desired length
- Available in screw-type adjustment only

PART #	INCREASES LENGTH	OVERALL LENGTH	WEIGHT
CUL4E49B	18"	22.63"	20



CUL4E49B
Fig. No. 4903-X

4¹/₄" ROADWAY BOXES

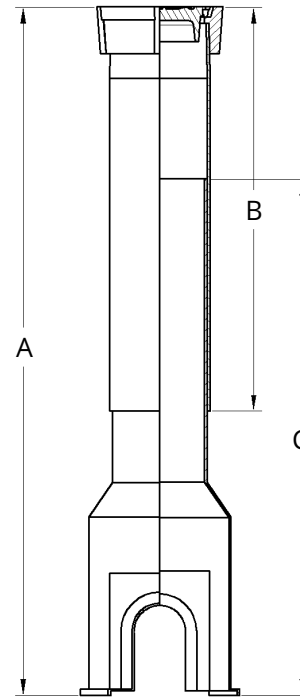
Standard Plastic 4¹/₄" Roadway Boxes - P4B

Standard plastic valve boxes are made from high impact resistant, standard-thickness ABS plastic. These valve boxes consist of a cast iron lid and rim that is bonded to the standard plastic top and a bottom section.

- Available in slide-type adjustment only
- For use with curb stops with 2" square operating nut
- Standard open arch bell (402) and with flange
- Multiple bell designs available to fit assorted valves
- Standard and Heavy-duty rims available
- Available in round and square rim and lid shapes
- Lid lettering options include WATER (W), GAS (G), SEWER (S), or your own customization
- Bottom sections can be used in any configuration with cast iron or standard plastic top sections

TO ORDER P4B - SPECIFY: Part Series, Rim Style, Bell Style, Lid Style and Lettering. Cast iron rims and lids found on pg 19. Security & Safety products start on pg 71. Tools & Accessories start on pg 89.

PART SERIES	EXTENSION RANGE DIM. A	TOP LENGTH DIM. B	BOTTOM LENGTH DIM. C
P4B1224	26-34	12	24
P4B1824	26-40	18	24
P4B2424	40-46	24	24
P4B2730	32-54	27	30



P4B

Standard 4¹/₄" Roadway Box

Fig. No. 445

Standard Plastic Extensions for 4¹/₄" Roadway Boxes - P4E

- Used to extend total length of the box
- Extensions are stackable to achieve to desired length
- Available in slide-type adjustment only

PART #	INCREASES LENGTH	OVERALL LENGTH
P4E18	14	18
P4E24	20	24
P4E30	26	30
P4E36	32	36



Slide-type Extension

For 4¹/₄" Roadway Boxes

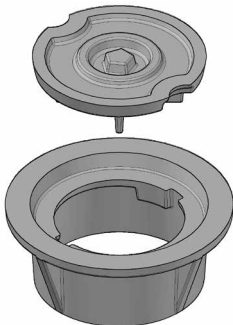
4 1/4" ROADWAY BOXES

Cast Iron Rims & Lids for Standard Plastic 4 1/4" Roadway Boxes



445

Drop-in Rim & Lid



445DT

Drop-turn Locking Rim & Lid



445BUG

Drop-turn Rim & Lid



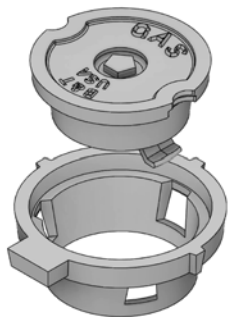
448

Flanged Rim & Lid



450

Square Rim & Lid



HL

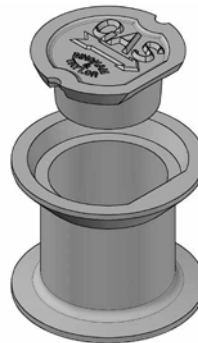
Locking Rim & Lid



4000RW

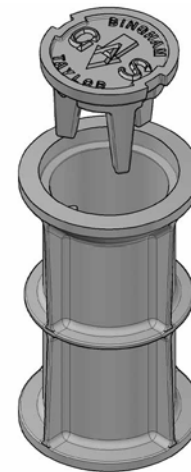
4" Rural Water Lid
Used with 4" PVC pipe

Heavy-duty Cast Iron 4 1/4" Rims & Lids



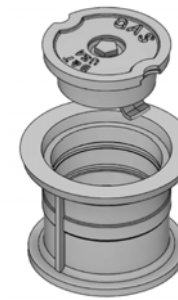
460

6" Stay Put Rim & Lid



P10

10" Stay-put Rim & Lid

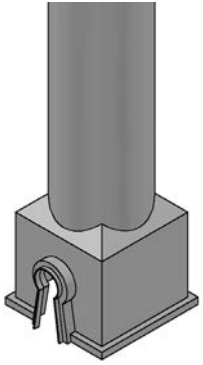


HHD

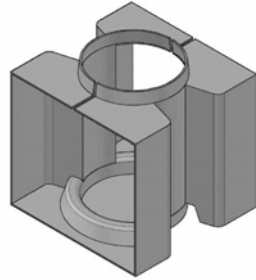
Heavy-duty 4"
Locking Rim & Lid

4 $\frac{1}{4}$ " ROADWAY BOXES

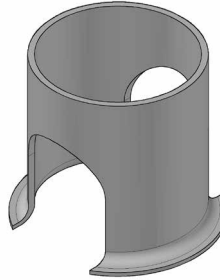
Plastic Bottoms & Valve Supports for Plastic 4 $\frac{1}{4}$ " Roadway Boxes



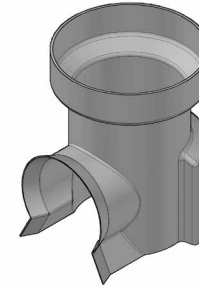
020 Bell
Bell Bottom



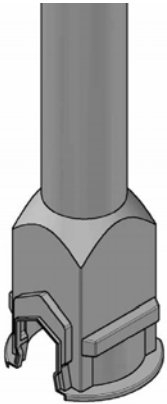
BTVS020P
For the 104 Bell
Supports $\frac{1}{2}$ " - $1\frac{1}{4}$ "
Perfection Valves



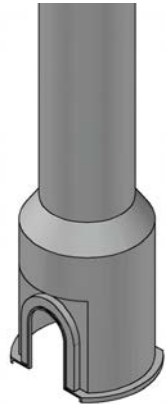
022 Bell
Bell Bottom



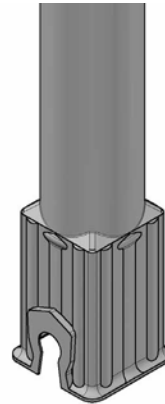
BTVS022M
Support for 1"-2"
Mueller Valves



401 Bell
Fits: Kerotest $\frac{1}{2}$ " - $1\frac{1}{4}$ " Plastic Valve
Poly $\frac{1}{2}$ " - $1\frac{1}{4}$ " Plastic Valve



402 Bell
Comes Standard with 4 $\frac{1}{4}$ " Plastic Boxes
Fits: 2" & 3" Plastic Valves



434 Bell
Fits: Perfection $\frac{1}{2}$ " - $1\frac{1}{4}$ " Plastic Valve
Kerotest $\frac{1}{2}$ " - $1\frac{1}{4}$ " Plastic Valve
Poly $\frac{1}{2}$ " - $1\frac{1}{4}$ " Plastic Valve

5 1/4" VALVE BOXES

Cast Iron 5 1/4" Valve Box 2-Piece Assemblies

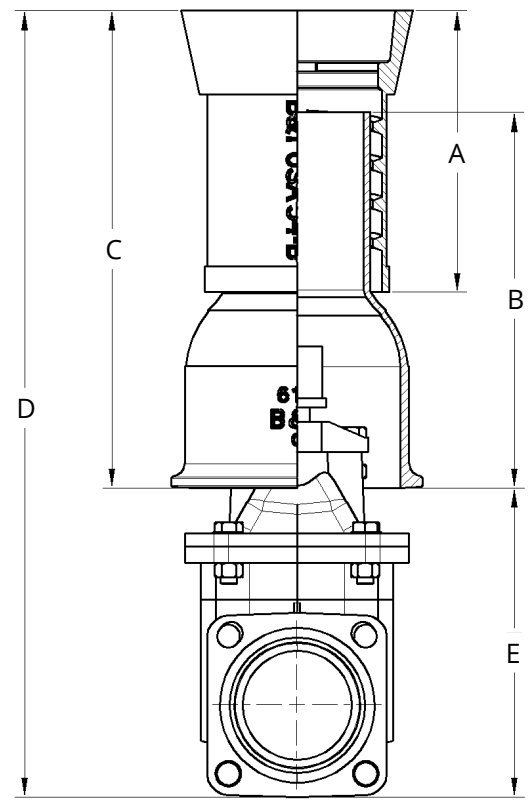
Cast iron 5 1/4" valve box 2-piece assemblies consist of a lid, a top section, and a bottom section. To determine the correct valve box length to order (Dim. C), take the size of your valve, then deduct Dim. E in the reference table below from the depth of your trench (Dim. D).

5 1/4" Valve Box 2-Piece Assemblies Length Reference Table

SIZE OF VALVE	3"	4"	5"	6"	8"	10"
Inches from bottom lower section to bottom of the trench - E	10	12	14	16	21	25

EXAMPLE: For a 2-piece valve box with a 6" valve in 5 foot trench
 Depth of trench (Dim. D) 60"
 For 6" valve deduct (Dim. E) - 16"
Min. length box (Dim. C) 44"

Order #21 Screw-type or #5564-S Slide-type in a 5 1/4" 2-piece valve box (pg 22).



2-Piece 5 1/4" Valve Box Assembly

5¼" VALVE BOXES

Cast Iron 5¼" Valve Box 2-Piece Assemblies - I5B

A cast iron 5¼" valve box 2-piece assembly consists of a lid, a top section, and a bottom section.

- The 2-piece valve box assembly will only cover the stuffing box in valves up to 10" in size
- Available in screw-type or slide-type adjustment
- Standard lid has 1½" skirt and weighs 13 lbs. Choose from standard round or square lid with lettering; Options include WATER (W), GAS (G), SEWER (S), FIRE (F) or your own customization.

- For top sections, choose from 10.5", 15.5", and 26" lengths (Dim. B)
- For bottom sections, choose from 14.5", 24", and 36" lengths (Dim. C)

TO ORDER I5B - SPECIFY: Part Series and Lid Lettering. For Slide-type, specify height of the flange and lug option. Find Lids on pg 31, Extensions on pg 25, and Paving Risers on pg 42. Security & Safety products start on pg 71. Tools & Accessories start on pg 89.

Screw-type

PART SERIES	EXTENSION RANGE DIM. A	TOP SECTION WITH LID			BOTTOM SECTION			BELL HEIGHT	TOTAL WEIGHT (W/LID)
		NO.	WT.	DIM. B	NO.	WT.	DIM. C		
I5B18	18-24	54	35.0	10.5	61	24.0	14.5	6.5	59.0
I5B20	27-36	55	42.0	15.5	62	33.5	24.0	6.5	75.5
I5B21	39-48	55	42.0	15.5	64	46.0	36.0	8.5	88.0
I5B22	39-60	56	62.0	26.0	64	46.0	36.0	8.5	108.0

Slide-type

PART SERIES	EXTENSION RANGE DIM. A	TOP SECTION WITH LID			BOTTOM SECTION			BELL HEIGHT	TOTAL WEIGHT (W/LID)
		NO.	WT.	DIM. B	NO.	WT.	DIM. C		
I5B5461S	18-24	54-S	35.0	10.5	61-S	24.0	15.0	6.5	59.0
I5B5561S	23-29	55-S	42.0	15.5	61-S	24.0	15.0	6.5	66.0
I5B5562S	27-36	55-S	42.0	15.5	62-S	33.0	24.0	6.5	75.0
I5B5564S	39-48	55-S	42.0	15.5	64-S	46.0	36.0	8.5	88.0
I5B5662S	38-48	56-S	58.0	26.0	62-S	33.0	24.0	6.5	91.0
I5B5664S	39-60	56-S	58.0	26.0	64-S	46.0	36.0	8.5	104.0

Longer boxes can be made by adding extensions to size no. 22 (screw) or 5664-S (slide)

Screw-type

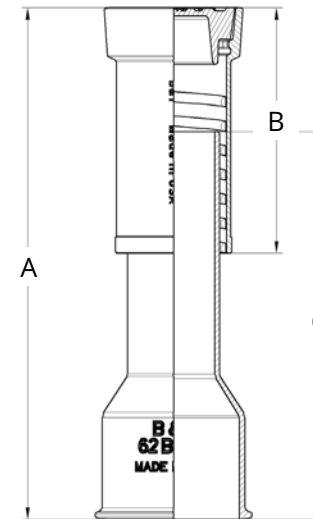


Fig. No. 4905

Slide-type

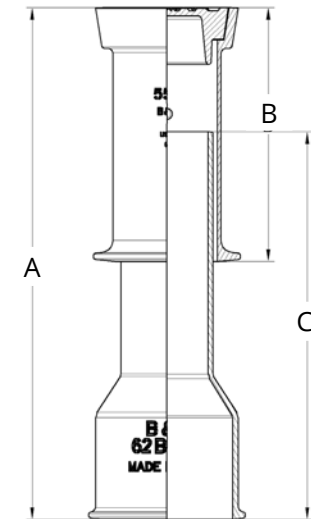


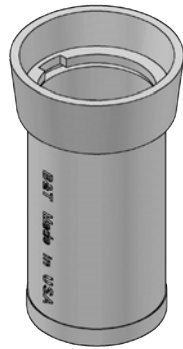
Fig. No. 4908

5 $\frac{1}{4}$ " VALVE BOXES

Cast Iron Screw-type Top Sections for 5 $\frac{1}{4}$ " Valve Box 2-Piece Assemblies



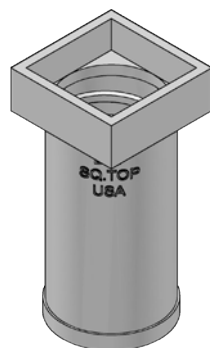
GRE5T54B
No. 54 Screw Top
10.5" Length



GRE5T55BCL35
No. 55 Screw Top Class 35
15.5" Length



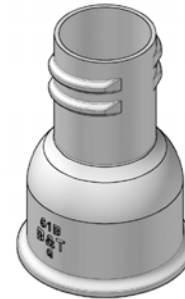
GRE5T56B
No. 56 Screw Top
26.0" Length



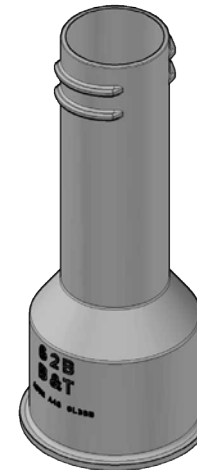
Screw-type Square Top
(15.5" Length Pictured)

- CUL5T54SQ**
No. 54SQ - 10.5" Length
- CUL5T55SQ**
No. 55SQ - 15.5" Length
- CUL5T56SQ**
No. 56SQ - 26.0" Length

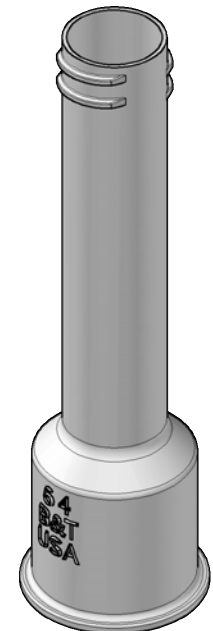
Cast Iron Screw-type Bottom Sections for 5 $\frac{1}{4}$ " Valve Box 2-Piece Assemblies



GRE5B61B
No. 61 Screw Bottom
14.5" Length



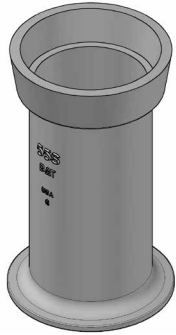
GRE5B62CL35
No. 62 Screw Bottom Class 35
24" Length



CUL5B64B
No. 64 Screw Bottom
36" Length

5 $\frac{1}{4}$ " VALVE BOXES

Cast Iron Slide-type Top Sections for 5 $\frac{1}{4}$ " Valve Box 2-Piece Assemblies



STANDARD SLIDE TOP
Slide-type Top w/ Bottom
Flange - w/ Lug

GRE5T54S

No. 54S - 10.5" Length
Double Lug

GRE5T55SLSKCL35

No. 55S - 15.5" Length
Double Lug - Class 35

GRE5T56S

No. 56S - 26.0" Length
Single Lug



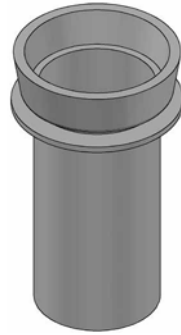
Slide-type Top No Flange
Double Lug

GRE5T55SNF

No. 55SNF - 15.5" Length

GRE5T56SNF

No. 56SNF - 26.0" Length



Slide-type Top w/ Flange
3" from Top - Single Lug

CUL5T55SF

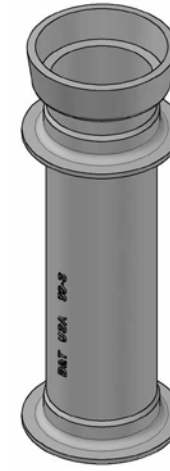
No. 55SF - 15.5" Length



Slide-type Top w/ Flange
6" from Top - Single Lug

CUL5T56SFL

No. 56SFL - 26.0" Length



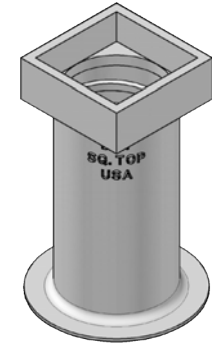
Slide-type Top w/ Double
Flange - Single Lug

CUL5T55SDF

No. 55SDF - 15.5" Length

CUL5T56SDF

No. 56SDF - 26.0" Length



Screw-type Square Top w/
Flange for use with Slide-
type Valve Boxes

CUL5T54SSQ

No. 54SSQFL - 10.5" Length

CUL5T55SQFLG

No. 55SSQFL - 15.5" Length

CUL5T56SQFLG

No. 56SSQFL - 26.0" Length



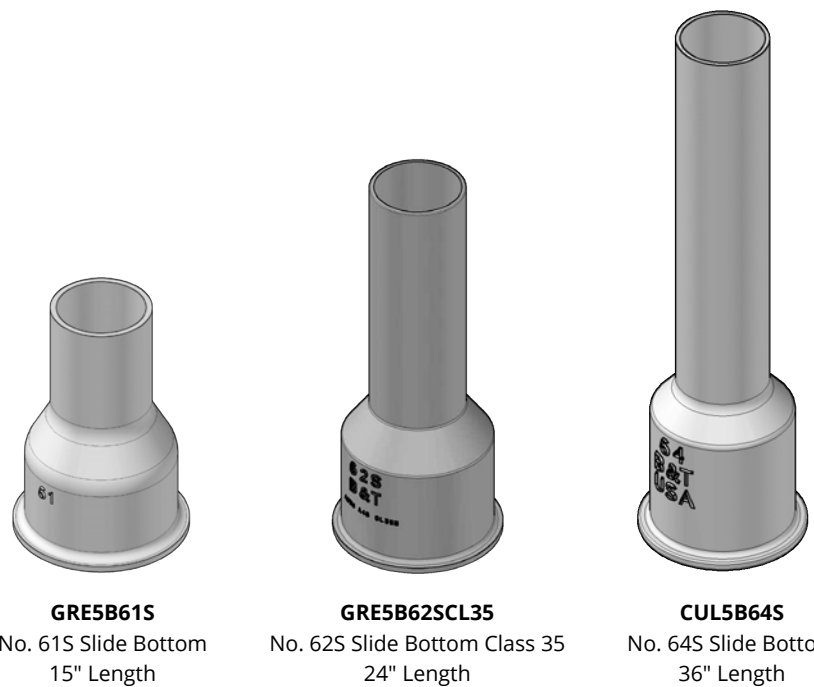
Slide-type Top w/ Flange
2" from Top - Single Lug

CUL5T56FL2

No. 56SFL2 - 26.25" Length

5 1/4" VALVE BOXES

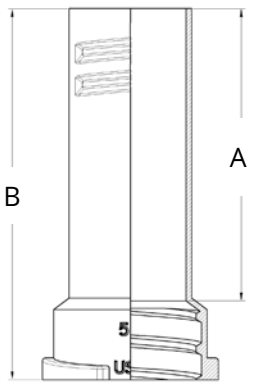
Cast Iron Slide-type Bottom Sections for 5 1/4" Valve Box 2-Piece Assemblies



Cast Iron Extensions for 5 1/4" Valve Boxes for Use with 2- and 3-Piece Assemblies - I5E

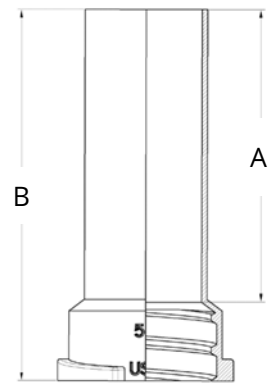
- Used to extend total length of the valve box
- Extensions are stackable to achieve to desired length
- Available in screw-type and slide-type

PART #		INCREASES LENGTH DIM. A	OVERALL LENGTH DIM. B	WEIGHT
SCREW-TYPE	SLIDE-TYPE			
I5E57	I5E63E	9.0	13.0	20.0
I5E58	I5E64E	14.0	18.0	23.0
I5E59	I5E65E	20.0	24.0	31.5
I5E60	I5E66E	24.0	27.0	36.5
I5E61	I5E67E	30.0	36.0	46.0



Screw-type Extension

Fig. No. 4905-X



Slide-type Extension

Fig. No. 4908-X

5 $\frac{1}{4}$ " VALVE BOXES

Cast Iron 5 $\frac{1}{4}$ " Valve Box 3-Piece Assemblies

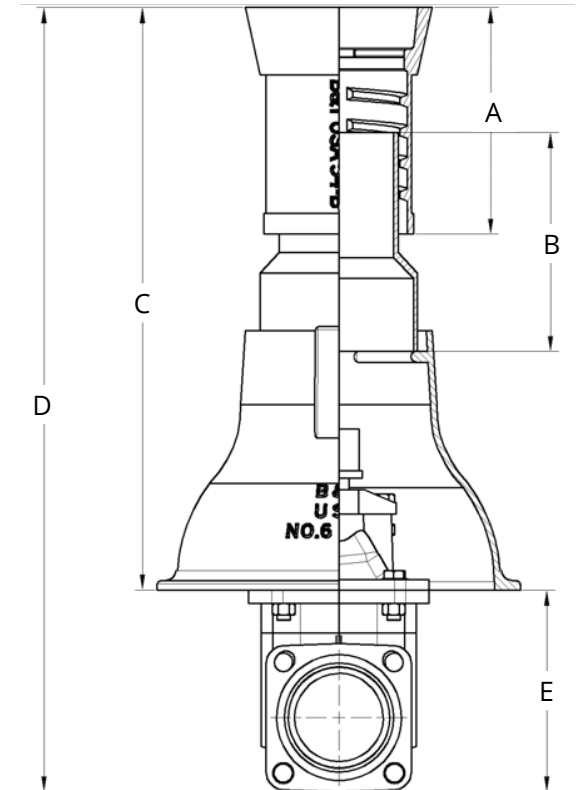
The 3-piece valve box includes a lid, a top section, a middle/stem, and a base.

Length Reference Table for Valve Boxes 3-Piece Assemblies

The size of the valve with the depth of the trench will determine the type of box to order. Letters 'AA' through 'F' in the table below indicate the part series which can be found in the table on the next page.

SIZE OF VALVE	BOTTOM BASE TO BOTTOM TRENCH DIM. E	NO. BASE USED	DEPTH OF TRENCH - DIM. D								
			36"	42"	48"	54"	60"	66"	72"	78"	84"
3	8	6	AA	A	B	C	CC	D	D	E	F*
4	12.5	6		AA	A	B	C	CC	D	E	E
6	15	6		AA	A	B	C	C	CC	D	E
8	19	6			AA	A	B	C	CC	D	E
10	24	6				A	A	B	C	CC	D
12	31	6 or 160					AA	A	B	C	CC
14	36.5	6 or 160						A	A	B	C
16	41.25	6 or 160							A	A	B

*The longest cast iron box we offer is the "E" valve box. An "F" box is created by adding an extension to an "E" box.



3-Piece Valve Box

5 1/4" VALVE BOXES

Cast Iron 5 1/4" Valve Box 3-Piece Assemblies - I5B

3-piece valve box includes a lid, a top section, a middle/stem, and a base.

- The 3-piece valve box covers the valve completely.
- The top section screws or slides over the middle section to provide adjustment. The middle section locks into the base.
- Choice of standard round or square lid with lettering options including WATER (W), GAS (G), SEWER (S), FIRE (F) or your own customization
- Comes standard with the No. 6 base, but you can choose the No. 160 base (pg 30).
- The No. 6 base is used to determine lengths shown in table on the previous page.

TO ORDER I5B - SPECIFY: Part Series, Rim Style, Lid Lettering, and Middle & Base Sections. Find Lids on pg 31, Extensions on pg 32, and Paving Risers on pg 42. Security & Safety products start on pg 71. Tools & Accessories start on pg 89.

PART SERIES		EXTENSION RANGE - DIM. A	TOP SECTION W/O LID			MIDDLE SECTION			NO. 6 BASE WEIGHT	TOTAL WEIGHT (W/O LID)
SCREW-TYPE	SLIDE-TYPE		NO.	WT.	DIM. B	NO.	WT.	DIM. C		
I5BAA6	I5BAA6SLID	26-30	54	22.0	10.5	60	14.0	10.5	45.0	81.0
I5BA6	I5BA6SLID	28-40	55	30.0	15.5	61	23.0	16.0	45.0	98.0
I5BB6	I5BB6SLID	36-48	55	30.0	15.5	62	31.5	24.0	45.0	106.5
I5BC6	I5BC6SLID	42-54	55	30.0	15.5	63	36.5	27.0	45.0	111.5
I5BCC6	I5BCC6SLID	48-60	55	30.0	15.5	64	46.0	36.0	45.0	121.0
I5BD6	I5BD6SLID	42-66	56	34.0	26.0	63	36.5	27.0	45.0	135.5
I5BE6	I5BE6SLID	48-72	56	54.0	26.0	64	46.0	36.0	45.0	145.0

Screw-type

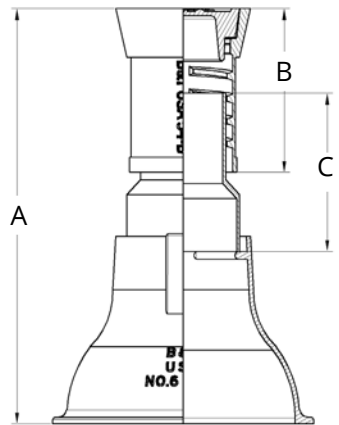


Fig. No. 4906

Slide-type

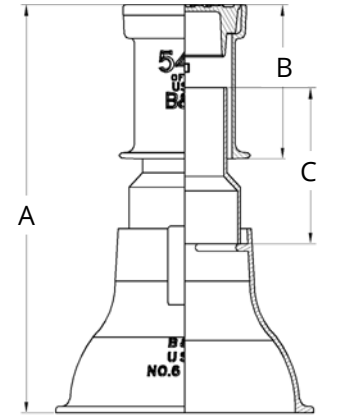


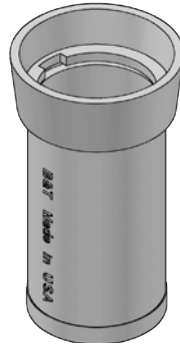
Fig. No. 4907

5¼" VALVE BOXES

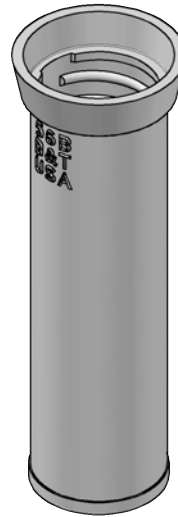
Cast Iron Screw-type Top Sections for 5¼" Valve Boxes 3-Piece Assemblies



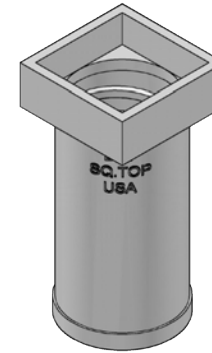
GRE5T54B
No. 54 Screw Top
10.5" Length



GRE5T55BCL35
No. 55 Screw Top Class 35
15.5" Length



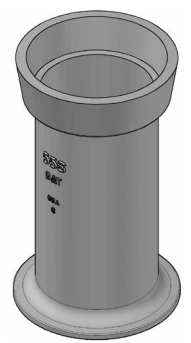
GRE5T56B
No. 56 Screw Top
26.0" Length



Screw-type Square Top
CUL5T54SQ
No. 54SQ - 10.5" Length
CUL5T55SQ
No. 55SQ - 15.5" Length
CUL5T56SQ
No. 56SQ - 26.0" Length

5 1/4" VALVE BOXES

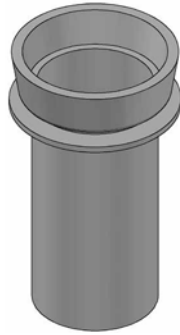
Cast Iron Slide-type Top Sections for 5 1/4" Valve Boxes 3-Piece Assemblies



STANDARD SLIDE TOP
Slide-type Top w/ Bottom Flange - w/ Lug
GRE5T54S
 No. 54S - 10.5" Length
 Double Lug
GRE5T55LSKCL35
 No. 55S - 15.5" Length
 Double Lug - Class 35
GRE5T56S
 No. 56S - 26.0" Length
 Single Lug



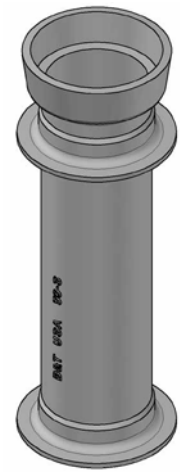
Slide-type Top No Flange Double Lug
GRE5T55SNF
 No. 55SNF - 15.5" Length
GRE5T56SNF
 No. 56SNF - 26.0" Length



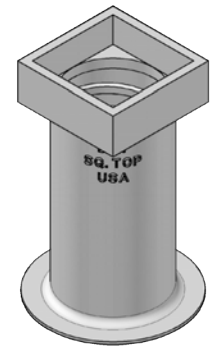
Slide-type Top w/ Flange 3" from Top - Single Lug
CUL5T55SF
 No. 55SF - 15.5" Length



Slide-type Top w/ Flange 6" from Top - Single Lug
CUL5T56SFL
 No. 56SFL - 26.0" Length



Slide-type Top w/ Double Flange - Single Lug
CUL5T55SDF
 No. 55SDF - 15.5" Length
CUL5T56SDF
 No. 56SDF - 26.0" Length



Screw-type Square Top w/ Flange for use with Slide-type Valve Boxes
CUL5T54SSQ
 No. 54SSQFL - 10.5" Length
CUL5T55SQFLG
 No. 55SSQFL - 15.5" Length
CUL5T56SQFLG
 No. 56SSQFL - 26.0" Length



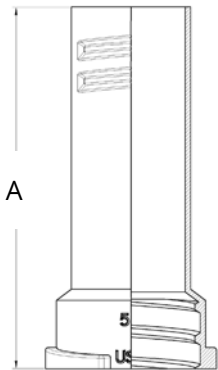
Slide-type Top w/ Flange 2" from Top - Single Lug
CUL5T56FL2
 No. 56SFL2 - 26.25" Length

5¼" VALVE BOXES

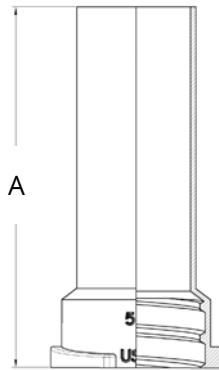
Cast Iron Middle Sections for 3-Piece 5¼" Valve Boxes

- The top section screws or slides over the middle section to provide adjustment. The middle section locks into the base.
- Available in screw-type and slide-type adjustment

PART #		OVERALL LENGTH DIM. A
SCREW-TYPE	SLIDE-TYPE	
I5M60B	I5M60S	10.5
I5M61B	I5M61S	18.0
I5M62B	I5M62S	24.0
I5M63B	I5M63S	30.0
I5M64B	I5M64S	36.0

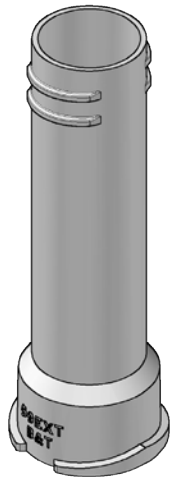


**Screw-type
Middle (Stem)**
Fig. No. 4906



**Slide-type
Middle (Stem)**
Fig. No. 4907

Screw-type

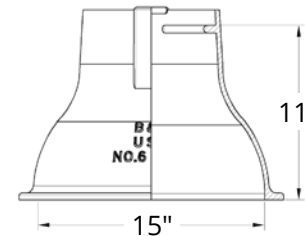
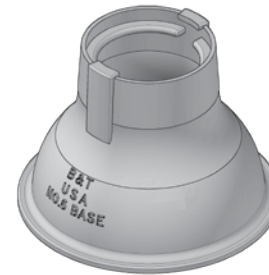


**5¼" Valve Box
Screw-type
Middle or Stem Section**

Cast Iron Bases for 3-Piece 5¼" Valve Boxes

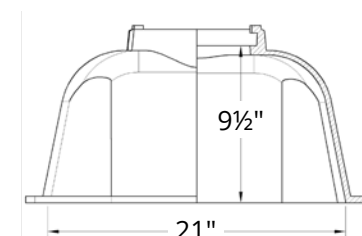
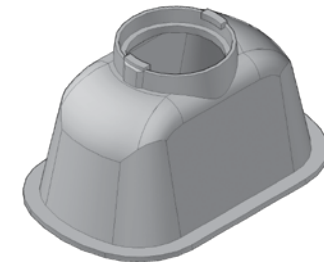
The 3-piece valve box comes standard with the No. 6 Round Base.

Base Options



CUL5BA6
No. 6 Round Base (standard)
Fig. No. 4909-A

For Valves 8" and smaller
Weight: 45 lbs



CUL5BA160
No. 160 Oval Base
Fig. No. 4909-D

For valves 16" and smaller
Overall length of valve box in
table will be 1½" less
Weight: 70 lbs

5 1/4" VALVE BOXES

Cast Iron Lids for Cast Iron, Bison, or CIP 5 1/4" Valve Boxes

- Our 5 1/4" valve boxes come with our standard round lid with a 1 1/2" skirt (CUL5L-RDB) but we offer a wide range of additional lid options including longer skirts, heavy-duty, locking, square, and lightweight.
- Choice of round or square lid with WATER (W), GAS (G), SEWER (S), or your own customization such as adding special lettering or logos.
- Powder coating can significantly reduce the risk of corrosion, ensuring the longevity of the product, and is available in almost any choice of color.
- **For Bison:** Choose only from the Standard Round Lid with 1 1/2" skirt, the Round Lid with 2 1/2" skirt, and the Universal Locking Lid.
- Leak detection lids and inserts available (pg 76)

PART SERIES	SKIRT SIZE	WEIGHT
CUL5L-RDB	1 1/2"	13
CUL5L-LSK	2 1/2"	14.5
CUL5LAQ-RD	1 1/2"	9.4
CUL5L-CP	1.35	12.5
CUL5L-SK4	4"	25
CUL5L-HVTSK4	4"	22
I5LB-UL	-	16
I5LB-LTYB	-	15
CUL5L-SQ	1 1/2"	14
CUL5L-HVLSK4-SQ	4"	25



CUL5L-RDB
Standard Round Lid with 1 1/2" Skirt
Fig. No. 4905-L1.5



CUL5L-LSK
Round Lid with 2 1/2" Skirt
Fig. No. 4905-L2.5



CUL5LAQ-RD
Lightweight Round Lid with 1 1/2" Skirt
Fig. No. 4905-LAQ



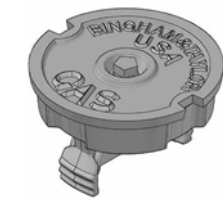
CUL5L-CP
Round Core Pick Hole Lid with 1.35" Skirt
Fig. No. 4905-LCP



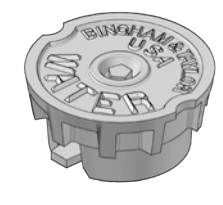
CUL5L-SK4
Heavy-duty, Round Lid with 4" Straight Skirt
Fig. No. 4905-L4



CUL5L-HVTSK4
Heavy-duty, Round Lid with 4" Tri-Skirt
Fig. No. 4905-TRI



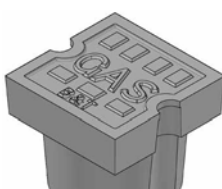
I5LB-UL
Universal Locking Lid
Fig. No. 4904-CL



I5LB-LTYB
Locking Lid
Used only with Screw-type top section
Fig. No. 4904-L



CUL5L-SQ
Square Lid with 1 1/2" Skirt
Fig. No. 4905-SQ-L1.5



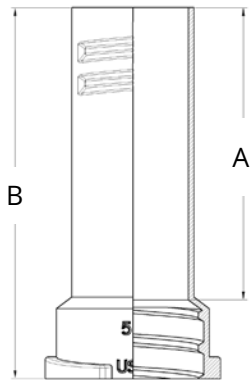
CUL5L-HVLSK4-SQ
Square Lid with 4" Skirt
Fig. No. 4905-SQ-L4

5 $\frac{1}{4}$ " VALVE BOXES

Cast Iron Extensions for 5 $\frac{1}{4}$ " Valve Boxes for use with 2- and 3-Piece Assemblies - I5E

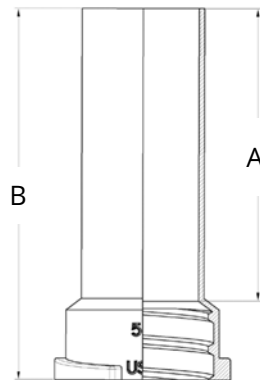
- Used to extend total length of the valve box
- Extensions are stackable to achieve to desired length
- Available in screw-type and slide-type

PART #		INCREASES LENGTH DIM. A	OVERALL LENGTH DIM. B	WEIGHT
SCREW-TYPE	SLIDE-TYPE			
I5E57	I5E63E	9.0	13.0	20.0
I5E58	I5E64E	14.0	18.0	23.0
I5E59	I5E65E	20.0	24.0	31.5
I5E60	I5E66E	24.0	27.0	36.5
I5E61	I5E67E	30.0	36.0	46.0



**Screw-type
Extension**

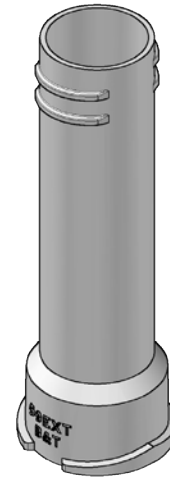
Fig. No. 4905-X



**Slide-type
Extension**

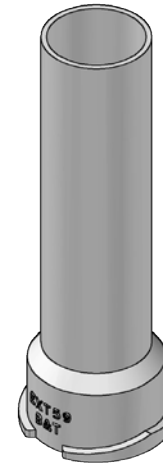
Fig. No. 4908-X

Screw-type



**Cast Iron 5 $\frac{1}{4}$ " Valve Box
Screw-type Extension**

Slide-type



**Cast Iron 5 $\frac{1}{4}$ " Valve Box
Slide-type Extension**

5¹/₄" VALVE BOXES

Bison 5¹/₄" Valve Boxes - P05ZH

Our exclusive Bison products combine a robust cast iron with versatile, thick-walled ABS plastic, delivering a solution that excels in both strength and adaptability. Bison valve boxes include a cast iron lid and rim paired with ABS plastic top and bottom sections. White interior increases visibility, making it easier to see down into the box.

These valve boxes are suitable for roadway installations, are ASTM 48A Class 30 and H20 load rated. Once the cast iron rim or top section is embedded in the concrete or asphalt, the roadway takes the loading, not the plastic components below.

- Weighs less than 25% of an all-cast iron valve box
- Available in screw-type or slide-type
- The cast iron rim is permanently bonded to the ABS plastic top section. Comes standard with the P500 rim. PI and P500T rims optional. The P500T rim is heavier-duty at 6.34" high and is better suited for paving applications.
- Choose from the standard round Lid with 1½" skirt, the round lid with 2½" skirt, and the universal locking lid. Lettering options include WATER (W), GAS (G), SEWER (S), FIRE (F) or your own customization (see pg 31)
- 2-piece assembly comes with a 101 bell. 3-piece assembly comes with a 107 bell. 104, 105, 106, or 108 bells are also available (see pg 37)
- Bison bottom sections can be used with 5¼" CIP boxes (pg 41)
- Extensions available in 24" and 36" lengths and can be stacked to achieve desired length (see pg 34).
- Use with 1"-6" cast iron paving risers (pg 42)

Bison Box Material Specifications

ABS PLASTIC PROPERTIES	ASTM TEST METHOD	MINIMUM VALUES
Tensile Strength	D-638	5,100 psi
Flexural Strength	D-790	8,000 psi
Flexural Modulus	D-790	230,000 psi
Impact Strength Izod	D-256	3.5 - 6.3 ft-lbs/in
Deflection Temp @ 264 psi	D-648	169 F

Comparison: Bison Weights vs. Cast Iron

Screw Type

EXTENSION RANGE	BISON	WEIGHT*	CAST IRON	WEIGHT*
22-28	P05ZHC2228A1W	15.3	18	44.5
27-38	P05ZHC2738A1W	17.1	20	60.0
39-50	P05ZHC3950A1W	19.4	21	74.5
39-60	P05ZHC3960A1W	20.8	22	90.5
51-72	P05ZHC5172A1W	23.1	22 & 58 Ext	113.5

Slide Type

EXTENSION RANGE	BISON	WEIGHT*	CAST IRON	WEIGHT*
22-28	P05ZHS2228A1W	15.3	5461-S	45.5
27-38	P05ZHS2738A1W	17.1	5562-S	61.5
39-50	P05ZHS3950A1W	19.4	5564-S	74.5
36-48	P05ZHS3648A1W	18.5	5662-S	76.5
39-60	P05ZHS3960A1W	20.8	5664-S	89.5
51-72	P05ZHS5172A1W	23.1	5664-S & 64-E Ext	112.5

*Weights do not include 13.5 lb. lid

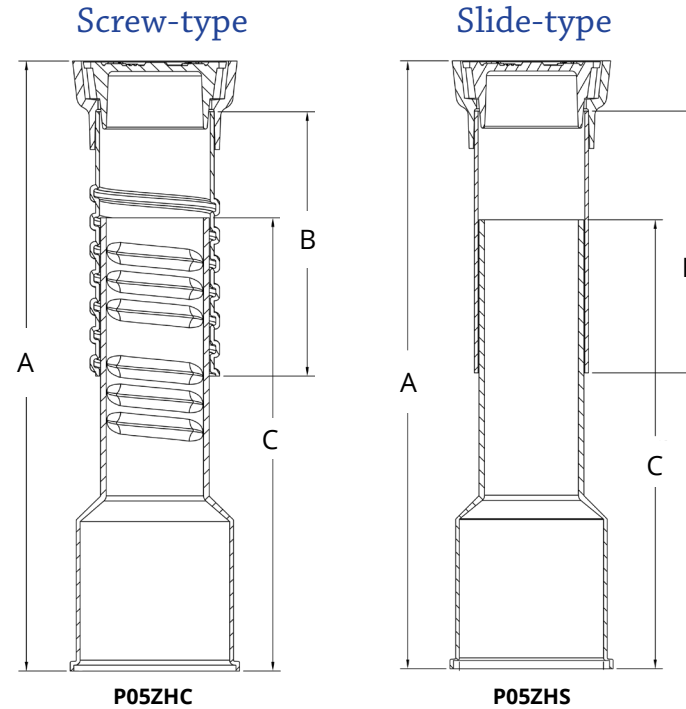
5 1/4" VALVE BOXES

Bison 5 1/4" Valve Box 2-Piece Assemblies

Bison 2-piece valve box assemblies come standard with a Bison plastic top section, the P500 rim, lid with WATER lettering, and 101 bottom section.

TO ORDER P05ZH - SPECIFY: Adjustment Type, Rim Style, Lid Style, Lid Lettering, and Bell Type. Find Paving Risers on pg 42. Security & Safety products start on pg 71. Tools & Accessories start on pg 89.

PART #		EXTENSION RANGE DIM. A	TOP LENGTH DIM. B	BOTTOM LENGTH DIM. C
SCREW-TYPE	SLIDE-TYPE			
P05ZHC2228A1W	P05ZHS2228A1W	22-28	10	18
P05ZHC2738A1W	P05ZHS2738A1W	27-38	14	24
P05ZHC3648A1W	P05ZHS3648A1W	36-48	24	24
P05ZHC3950A1W	P05ZHS3950A1W	39-50	14	36
P05ZHC3960A1W	P05ZHS3960A1W	39-60	24	36
P05ZHC5172A1W	P05ZHS5172A1W	51-72	24	48



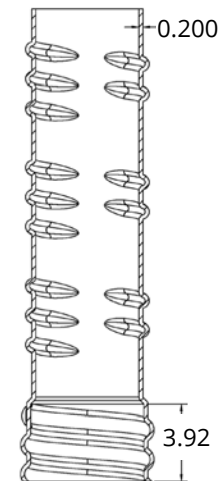
Bison 5 1/4" 2-Piece Screw-type Valve Box with Standard 101 Bell

Bison Extensions for 5 1/4" 2- and 3-Piece Valve Boxes

- Used to extend total length of the valve box
- Use with a 2-or 3-piece assembly or purchase as components
- Stack extensions to achieve desired length
- Available in screw-type and slide-type

PART #		OVERALL LENGTH
SCREW-TYPE	SLIDE-TYPE	
P05EHC24	P05EHS24	24
P05EHC30	P05EHS30	30

P05EHC
Bison 5 1/4" Screw-type Extension



5 1/4" VALVE BOXES

Bison 5 1/4" Valve Box 3-Piece Assemblies

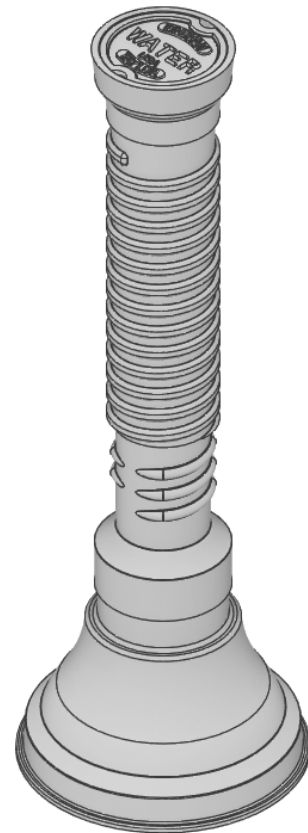
Bison 3-piece valve box assemblies come standard with Bison plastic top section, the P500 rim, lid with WATER lettering, middle section (or stem), and 107 bottom bell.

- Choose from the standard round lid with 1 1/2" skirt, the round lid with 2 1/2" skirt, and the universal locking lid (see pg 31).
- Lid lettering options include: WATER (W), GAS (G), SEWER (S), or your own customization such as adding special lettering or logos.
- Middle (stem) sections come in 12", 18", 24", and 36" lengths.
- Come standard with the 107 bottom bell, but you can choose from the 101, 104, 105, 106, and 108 bottom bells. We recommend using a valve box stabilizer with 101, 106, and 107 bells.
- Extensions available in 24" and 36" lengths and can be stacked to achieve desired length (see pg 34).

TO ORDER P05ZH- SPECIFY: Adjustment Type, Rim Style, Lid Style, Lid Lettering, and Bell Type. Find Bison extensions on pg 34 and Paving Risers on pg 42. Security & Safety products start on pg 71. Tools & Accessories start on pg 89.

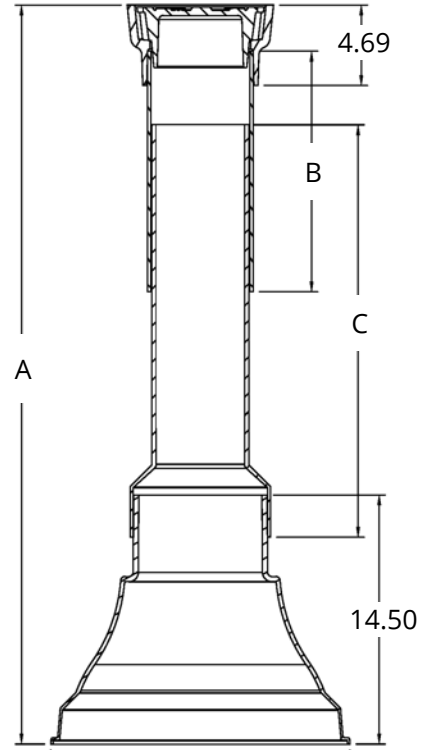
PART #		EXTENSION RANGE DIM. A	TOP LENGTH DIM. B	BOTTOM LENGTH DIM. C
SCREW-TYPE	SLIDE-TYPE			
P05ZHC3238A7W	P05ZHS3238A7W	33-38	14	24
P05ZHC3950A7W	P05ZHS3950A7W	39-50	14	36
P05ZHC4260A7W	P05ZHS4260A7W	42-60	24	36
P05ZHC4455A7W	P05ZHS4455A7W	44-55	14	42
P05ZHC4566A7W	P05ZHS4566A7W	45-66	24	42
P05ZHC5272A7W	P05ZHS5272A7W	52-72	24	24 + 30 Ext.

Screw-type



Bison 5 1/4" Valve Box 3-Piece Assembly with standard 107 Bell

Slide-type



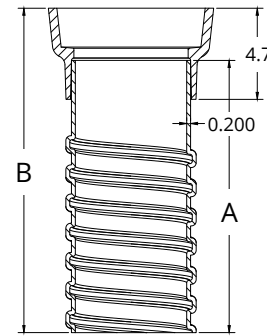
P05ZHS
Bison 5 1/4" Slide-type Assembly

5¼" VALVE BOXES

Bison 5¼" Valve Box Components

Bison Top Sections with P500 Rim for 5¼" Valve Box 2- and 3-Piece Assemblies

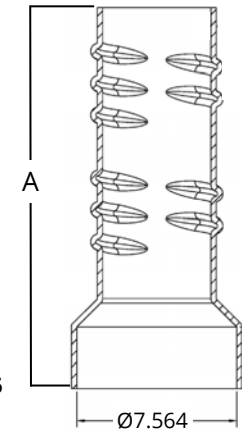
PART #		TOP LENGTH DIM. A	TOTAL LENGTH DIM. B
SCREW-TYPE	SLIDE-TYPE		
P05PTHCA10	P05PTHTSA10	10	12.7
P05PTHCA14	P05PTHTSA14	14	16.7
P05PTHCA24	P05PTHTSA24	24	26.7



Top Section w/ P500 Rim
(No Flange)

Bison Middle Sections for use with a 106 or 107 Bell for 5¼" Valve Box 3-Piece Assemblies

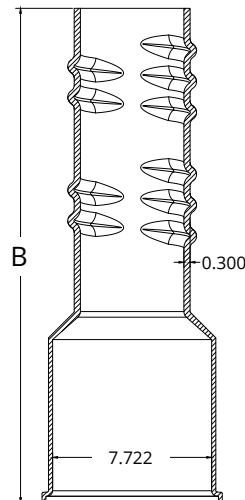
PART #		MIDDLE LENGTH DIM. A
SCREW-TYPE	SLIDE-TYPE	
P05SHC12	P05SHS12	12
P05SHC18	P05SHS18	18
P05SHC24	P05SHS24	24
P05SHC30	P05SHS30	30



Stem for 106
& 107 Bells

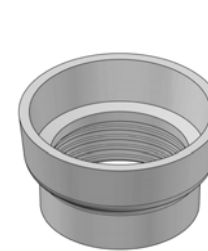
Bison 101 Bottom Sections for 5¼" Valve Boxes 2-Piece Assemblies

PART #		TOTAL LENGTH DIM. B
SCREW-TYPE	SLIDE-TYPE	
P05BHC18	P05BHS18	18
P05BHC24	P05BHS24	24
P05BHC36	P05BHS36	36
P05BHC48	P05BHS48	48

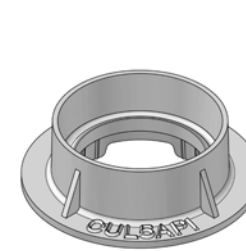


Bottom Section w/ 101 Bell

Bison 5¼" Valve Box Rim Options



GRE5R500R
P500 Rim with
No Flange



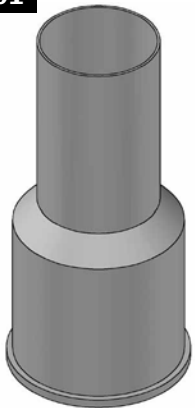
CUL5API
PI Rim with
Full Flange



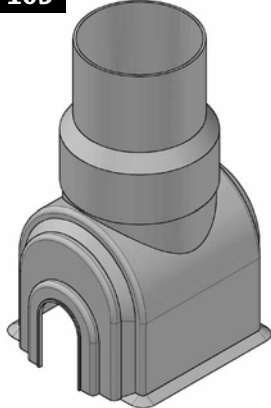
CUL5R500RT
P500 Extended Rim
6.34" High

5 $\frac{1}{4}$ " VALVE BOXES

Bison Thick-Walled Bottom Bells for Bison 5 $\frac{1}{4}$ " Valve Boxes

101

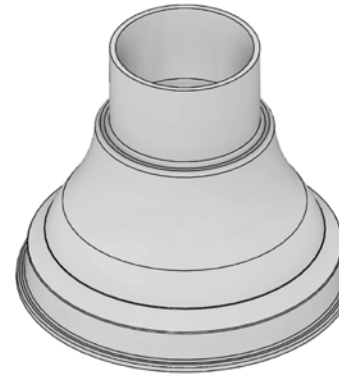
Standard Bottom
Fits: Over Bonnet on
up to 10" Valves

105

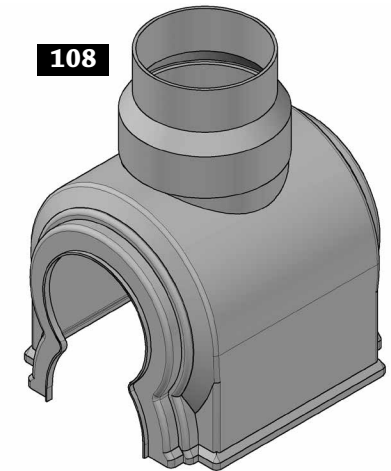
Fits: 2" & 4"
Full Port Plastic Valves

106

Fits: 2" & 3" Plastic Valves

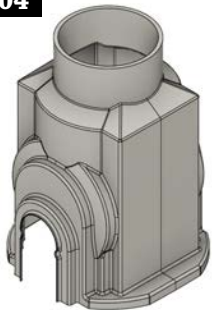
107

Fits: 6"-12"
Full Port Plastic & Steel Valves

108

Fits: 6"
Full Port Plastic Valves

Note: We recommend using a valve box stabilizer with 101, 106, and 107 bells to keep the operating nut centered in the valve box. Stabilizers available on pg 74.

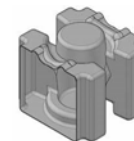
104

Use with Bingham & Taylor
Valve Supports

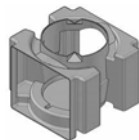
Standard Plastic Valve Supports for use with Bison 104 Bottom Bell - P05V



VTVS1
Kerotest & Poly Valve Support for 1/2"
to 1 1/4" Ball Valves



VPVS1
Perfection Support for 1/2" to 1 1/4" Valves



VPVS3
Perfection 2" Valve Support



VL000
2" Lyall Valve Support



VN230
Kerotest & Poly
Valve Support for 2" & 3" Valves



VPVS2
Poly 4" Valve Support (Reduced Port)

5¼" VALVE BOXES

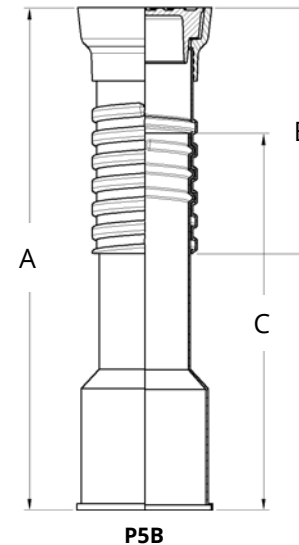
Standard Plastic 5¼" Valve Boxes - P5B

Our standard plastic products are made of ABS which is thicker than standard polypropylene plastic products but thinner than our Bison products. We use white plastic making it easier to see down into the box.

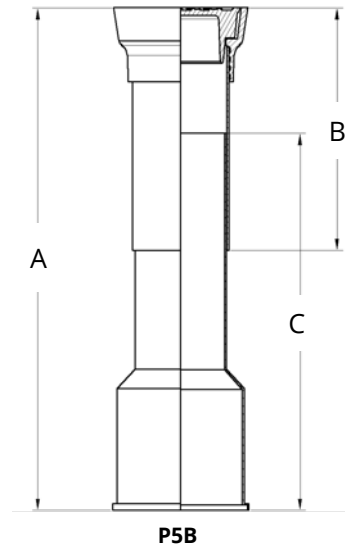
- Plastic top and bottom sections are paired with cast iron lid and rim that are permanently bonded to the plastic top section
- Available in screw-type or slide-type adjustment
- Choice of standard round or square lid with lettering options including WATER (W), GAS (G), SEWER (S), FIRE (F) or your own customization
- Comes standard with a 101 bell. 104, 105, 106, 107, or 108 bells are also available (pg 39)
- Standard plastic bottom sections can be used with CIP boxes (pg 41)
- Can be used with cast iron paving risers 1"-6" (pg 42)

TO ORDER P5B - SPECIFY: Adjustment Type, Rim Style, Lid Lettering, and Bottom Bell Style (pg 39). Security & Safety products start on pg 71. Tools & Accessories start on pg 89.

PART SERIES		EXTENSION RANGE DIM. A	TOP LENGTH DIM. B	BOTTOM LENGTH DIM. C
SCREW-TYPE	SLIDE-TYPE			
P5B18	P5B5461S	22-24	9	18
P5B20	P5B5562S	28-36	15	24
P5B21	P5B5564S	40-48	15	36
P5B21A	P5B5662S	36-48	27	24
P5B22A	P5B5663S	34-54	27	30
P5B22	P5B5664S	42-56	27	36
P5B23	P5B5666S	52-72	27	48
-	P5B5766S	52-85	39	48



P5B
5¼" Valve Box Screw-type
Fig. No. P-500-B

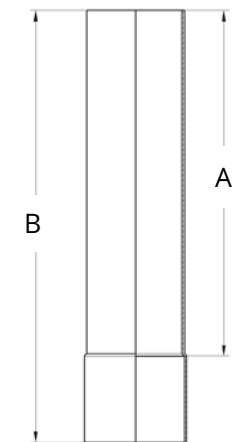


P5B
5¼" Valve Box Slide-type
Fig. No. P-500-S

Extensions for Standard Plastic 5¼" Valve Boxes

- Used to extend total length of the valve box
- Stack extensions to achieve desired length
- Available in screw-type and slide-type

PART #		INCREASES LENGTH DIM. A	OVERALL LENGTH DIM. B
SCREW-TYPE	SLIDE-TYPE		
P5E56	-	8	12
P5E57	P5E63E	12	16
P5E58	P5E64E	20	24
P5E59	P5E65E	26	30
P5E60	P5E66E	32	36

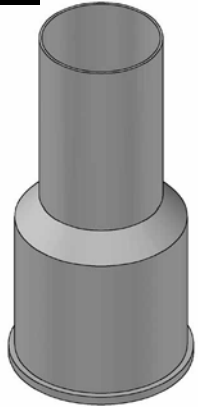


P5E
Standard Plastic
Slide-type Extension

5 $\frac{1}{4}$ " VALVE BOXES

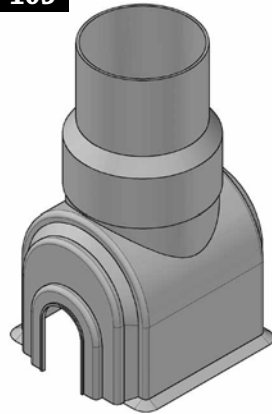
Standard Plastic Bottom Bells for 4 $\frac{1}{4}$ ", 5 $\frac{1}{4}$ ", and 7" CIP & Standard Plastic Valve Boxes

101



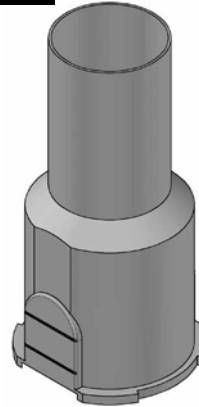
Standard Bottom
Fits: Over Bonnet on
up to 10" Valves

105



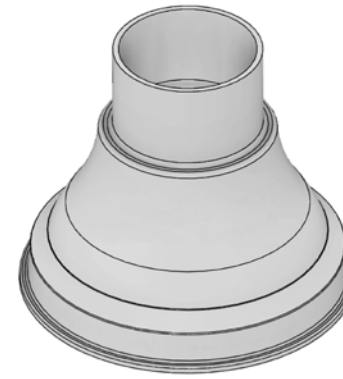
Fits: 2" & 4"
Full Port Plastic Valves

106



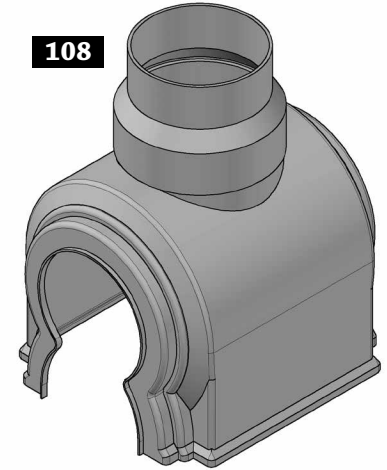
Fits: 2" & 3" Plastic Valves

107



Fits: 6"-12"
Full Port Plastic & Steel Valves

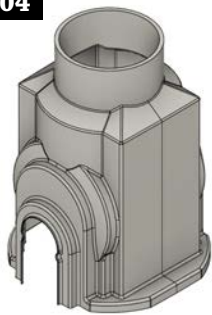
108



Fits: 6"
Full Port Plastic Valves

Note: We recommend using a valve box stabilizer with 101, 106, and 107 bells to keep the operating nut centered in the valve box. Stabilizers available on pg 74.

104

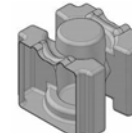


**Use with Bingham & Taylor
Valve Supports**

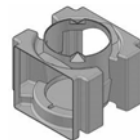
Standard Plastic Valve Supports for Standard Plastic 104 Bottom Bell - P05V



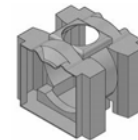
VTVS1
Kerotest & Poly Valve Support for 1/2"
to 1 1/4" Ball Valves



VPVS1
Perfection Support for 1/2" to 1 1/4" Valves



VPVS3
Perfection 2" Valve Support



VL000
2" Lyall Valve Support



VN230
Kerotest & Poly
Valve Support for 2" & 3" Valves



VPVS2
Poly 4" Valve Support (Reduced Port)

5 1/4" VALVE BOXES

Cast Iron Rims & Lids for 5 1/4" Standard Plastic Valve Boxes

Lids that go with P500 Rim



**LID CUL5L-RDB
RIM P500**

Standard Round Drop-in Lid & Standard Rim



CUL5L-LSK

Round Drop-in Lid with 2 1/2" Skirt



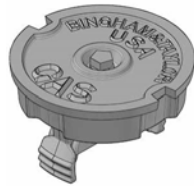
CUL5L-SK4

Heavy-duty, Round Drop-in Lid w/ 4" Straight Skirt



CUL5L-HVTSK4

Heavy-duty, Round Drop-in Lid w/ 4" Tri-Skirt



ISLB-UL

Universal Locking Lid



CUL5LAQ-RD

Lightweight Round Lid With 1 1/2" Skirt



**LID CUL5L-SQ
RIM P501SQ**

Square Lid w/ 1 1/2" Skirt & Square Rim



**LID CUL5L-SQ
RIM 500SQFL**

Flanged Square Lid & Rim



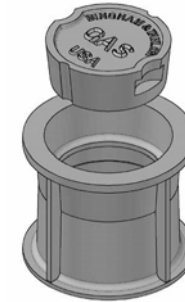
CUL5L-HVLSK4-SQ

Square Lid With 4" Skirt



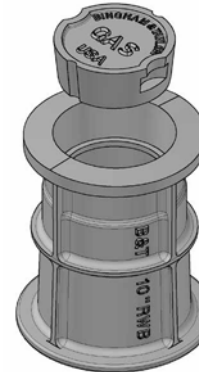
LID-HGL / RIM-HL

Locking Lid & Rim with Tab Bolt



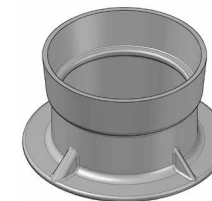
LID-558 / RIM-558

Lid & Double Flange Rim (1" std rim or 2 3/8" long skirt)



LID-558 / RIM-559

Lid & Triple Flange Rim



2194

Top Hat Rim



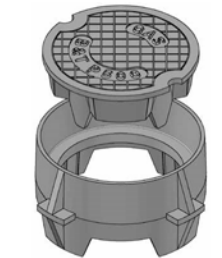
LID-RD / RIM-PI

Bottom Flange PI Rim



LID-GPSE / RIM-PI2

Full Flange PI 2 Rim



LID-GP500 / RIM-PIAGL

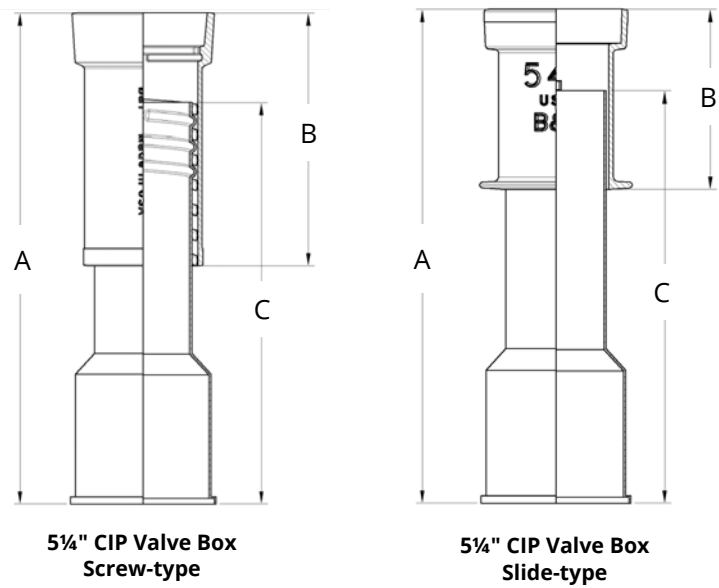
Partial Flange PI 3 Rim

5 1/4" VALVE BOXES

CIP 5 1/4" Valve Boxes - CIP05ZH/CIP5

Bingham & Taylor's exclusive CIP (Combination Cast Iron and Plastic) line offers the best of both worlds by combining the durability of cast iron with the lightweight convenience of ABS plastic. Our CIP boxes feature a robust cast iron top section and lid, paired with either a standard plastic or Bison plastic bottom. This unique design provides superior strength where it's needed most—at the surface—while maintaining ease of handling and installation with a lighter plastic base.

- Complete box consists of a cast iron lid, cast iron top section (pg 24) and Bison bottom section (pg 37) or standard plastic bottom section (pg 39).
- Slide-type has flange at bottom of top section with option for no flange if not wanted.



TO ORDER CIP5 - SPECIFY: Part Series, Lid Lettering, and Bottom Material (Bison or Standard Plastic). For Slide-type, specify height of the flange and lug option. Lids found on pg 31 and Extensions on pg 38. Security & Safety products start on pg 71. Tools & Accessories start on pg 89.

CIP with Bison Bottom Section

PART SERIES		EXTENSION RANGE DIM. A	TOP SECTION WITH LID		BOTTOM SECTION	TOTAL WEIGHT (W/LID)
SCREW-TYPE	SLIDE-TYPE		NO.	DIM. B	DIM. C	
CIP05ZHC2126Z1	CIP05ZHS2126Z1	21-26	54	10.5	18	40.04
CIP05ZHC2736Z1	CIP05ZHS2736Z1	27-36	55	15.5	24	47.10
CIP05ZHC3948Z1	CIP05ZHS3948Z1	39-48	55	15.5	36	50.20
CIP05ZHC3960Z1	CIP05ZHS3960Z1	39-60	56	26.0	36	65.40
CIP05ZHC5160Z1	CIP05ZHS5160Z1	51-60	54	16.0	48	61.20
CIP05ZHC5171Z1	CIP05ZHS5171Z1	51-71	56	26.0	48	67.70

CIP with Standard Plastic Bottom Section

PART SERIES		EXTENSION RANGE DIM. A	TOP SECTION WITH LID		BOTTOM SECTION		TOTAL WEIGHT (W/LID)
SCREW-TYPE	SLIDE-TYPE		NO.	DIM. B	NO.	DIM. C	
CIP5B18	CIP5461S	18-24	54	10.5	P-61	18	36.5
CIP5B19	CIP5561S	21-26	55	15.5	P-61	18	43.5
CIP5B20	CIP5562S	27-36	55	15.5	P-62	24	44.0
CIP5B20A	CIP5563S	32-42	55	15.5	P-63	30	44.5
CIP5B21	CIP5564S	39-48	55	15.5	P-64	36	45.0
CIP5B22	CIP5664S	39-60	56	26.0	P-64	36	65.0
CIP5B23	CIP5666S	51-72	56	26.0	P-66	48	66.0
CIP5B24	CIP5668S	63-84	56	26.0	P-68	60	69.0

5 $\frac{1}{4}$ " VALVE BOXES

Cast Iron Paving Risers (Adapters) for 5 $\frac{1}{4}$ " Valve Boxes

Standard 5 $\frac{1}{4}$ " Riser

- Used to raise 5 $\frac{1}{4}$ " round valve boxes
- 1", 1 $\frac{1}{2}$ " and 2" risers available with flange
- Works with standard 5 $\frac{1}{4}$ " lids

PART #	RISE HEIGHT	WEIGHT (WT.)
CUL5A1	1	6.0
CUL5A1.5	1 $\frac{1}{2}$	9.0
CUL5A2	2	11.0
CUL5A2.5	2 $\frac{1}{2}$	14.0
CUL5A3RD	3	15.3
CUL5A4RD	4	17.7
GRE5A6RD	6	35.0

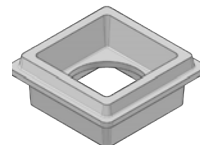


CUL5A
Standard Riser
Fig. No. 6016-B

Square 5 $\frac{1}{4}$ " Riser

- For use in raising 5 $\frac{1}{4}$ " square valve boxes
- 1" riser requires special lid

PART #	RISE HEIGHT	WT.
CUL5A1SQ	1	13
CUL5A21/4SQ	2 $\frac{1}{4}$	14



CUL5A1SQ
1" Square Riser
Uses special lid
Fig. No. 6016-SQ-RS1



CUL5LASQ
Special Lid for
1" Square Riser
with 1 $\frac{1}{2}$ " Skirt
Fig. No. 6016-SQ-L15

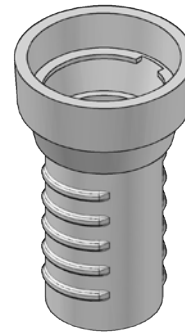


CUL5A21/4SQ
Square Riser
Works with standard 5 $\frac{1}{4}$ "
square lid
Fig. No. 6016-SQ-RS2.25

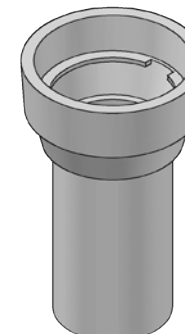
Rite Hite 5 $\frac{1}{4}$ " Riser

- When repaving, used when existing valve box is set too low
- Adjustable from 2 $\frac{1}{2}$ " to 12"

PART #	TYPE	RISE HEIGHT	WT.
CUL5ARH12	Screw	12	25
CUL5ARH	Slide	8	15
CUL5ARH12S	Slide	12	22



CUL5ARH12
Rite Hite Riser
Screw-type
Fig. No. 6030

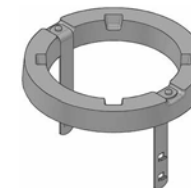


CUL5ARH12S
Rite Hite Riser
Slide-type
Fig. No. 6020

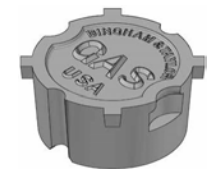
Round 5 $\frac{1}{4}$ " Riser for Plastic Valve Boxes

- For use with 558 rims only
- Available in 1" and 2 $\frac{3}{4}$ " heights
- 1" riser requires special lid

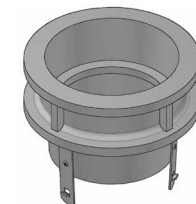
PART #	RISE HEIGHT	WT.
I5RC1558	1	5.5
I5RC23/8558	2 $\frac{3}{4}$	7.0



I5RC1558
1" Round Riser
Uses special lid
Fig. No. P558RS



CUL5L558
Special Lid for
1" Round Riser
Fig. No. P558L



I5RC23/8558
2 $\frac{3}{4}$ " Round Riser
Uses standard round lid
Fig. No. P5582RS

7" VALVE BOXES

Cast Iron 3-Piece 7" Valve Box - Reference Table

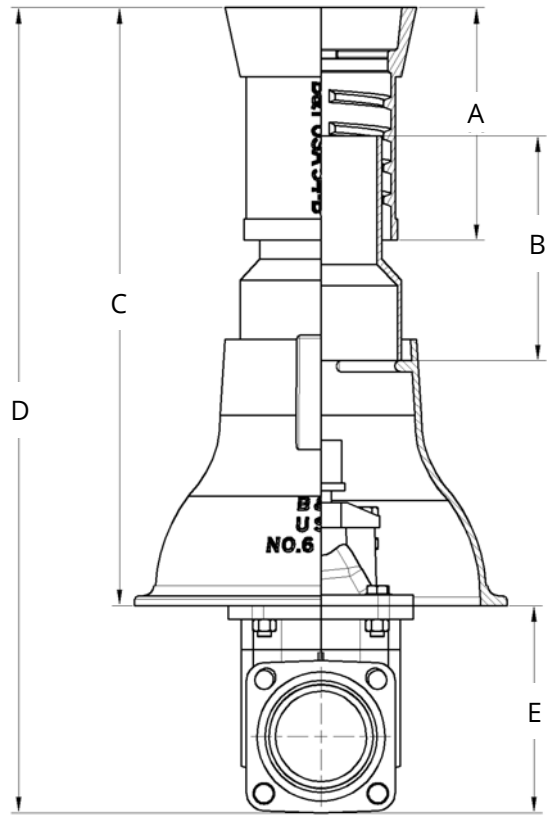
The 3-piece valve box includes a lid, a top section, a middle/stem, and a base.

Length Reference Table for 3-Piece Valve Boxes

The size of the valve with the depth of the trench will determine the type of box to order. Letters 'II' through 'L' in the table below indicate the part series which can be found in the table on the next page.

SIZE OF VALVE	BOTTOM BASE TO BOTTOM TRENCH (DIM. E)	NO. BASE USED	DEPTH OF TRENCH								
			36	42	48	54	60	66	72	78	84
3	8	6	I	I	J	K	L	L	L*	L*	L*
4	13 1/2	6	II	I	J	J	K	L	L	L*	L*
6	15	6	II	II	I	J	K	L	L	L*	L*
8	19	6		II	I	I	J	K	L	L	L*
10	24	6			II	I	J	J	K	L	L
12	31	160				II	I	I	J	K	L
14	36 1/2	160					II	I	I	J	K
16	41 1/4	160						II	I	I	J

*The longest cast iron box we offer is the "K" valve box. An "L" box is created by adding an extension to an "K" box.



17B
7" Valve Box Screw-type
Fig. No. 5001

7" VALVE BOXES

Cast Iron 7" Valve Box 3-Piece Assemblies - I7B

3-piece 7" valve box includes a lid, a top section, a middle/stem, and a base.

- The 3-piece valve box covers the valve completely
- The top section screws or slides over the middle section to provide adjustment. The middle section locks into the base.
- Choice of standard round or square lid with lettering options including WATER (W), GAS (G), SEWER (S) or your own customization
- Comes standard with the No. 6 base, but you can choose the No. 160 base
- The No. 6 base is used to determine lengths shown in table on pg 43

TO ORDER I7B - SPECIFY: Part Series, Adjustment Type, Lid Lettering, and Bell Type. Lids and Risers (Adapters) found on pg 46. Security & Safety products start on pg 71. Tools & Accessories start on pg 89.

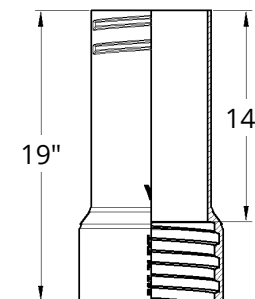
PART SERIES	EXTENSION RANGE DIM. A	TOP SECTION WITH LID			MIDDLE SECTION			NO. 6 BASE WT.	TOTAL WEIGHT (W/LID)
		NO.	WT.	DIM. B	NO.	WT.	DIM. C		
I7BI	27-39	75	81.5	15	81	24.5	14	45.0	151.0
I7BJ	33-45	75	81.5	15	82	30.0	20	45.0	156.5
I7BK	39-51	75	81.5	15	83	41.0	26	45.0	167.5
I7BL	39-60	76	111.0	26	83	41.0	26	45.0	197.0

*The longest cast iron box we offer is the "K" valve box. An "L" box is created by adding an extension to an "K" box.

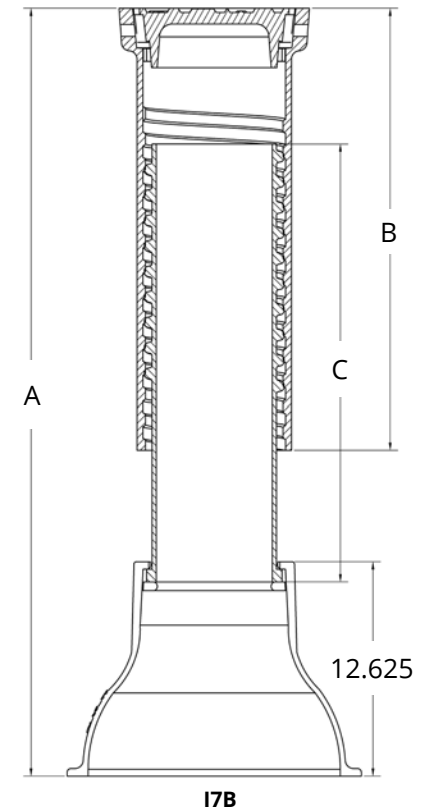
Cast Iron Extensions for 7" Valve Boxes

- Used to extend total length of the valve box
- Stack extensions to achieve to desired length
- Available in screw-type adjustment only

PART #	INCREASES LENGTH	OVERALL LENGTH	WEIGHT
CUL7E71	14	19	36.0



CUL7E71
7" Valve Box
Screw-type Extension
Fig. No. 5001-X



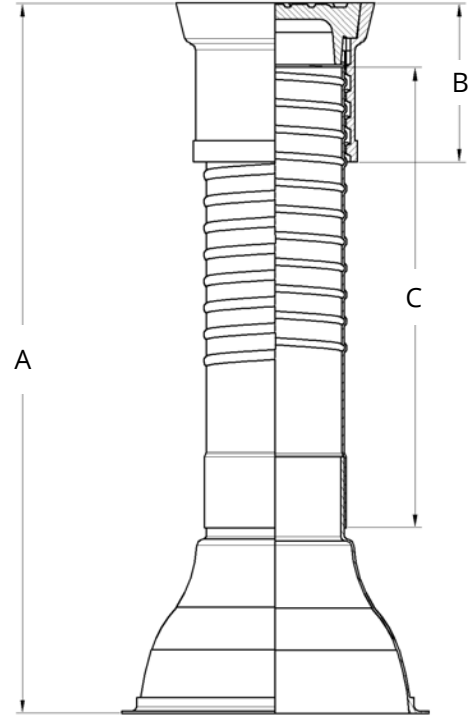
I7B
3-Piece 7" Valve Box Screw-type Assembly
Fig. No. 5001

7" VALVE BOXES

CIP 7" Valve Box 2- and 3-Piece Assemblies - CIP7B

- CIP (Combination Cast Iron and Plastic) 2-piece box includes a cast iron top section and lid with a standard plastic one-piece base with bonded shaft.
- 3-piece box includes cast iron top section & lid with standard plastic middle (stem) and base
- Available in screw-type adjustment only
- Choice of standard round or square lid with WATER (W) or GAS (G) lettering
- Comes standard with a 107 base. 105 and 108 bases also available
- Use the table on pg 43 to determine length of box to use

TO ORDER CIP7B - SPECIFY: Part Series, Lid Lettering, and Bell Type. Lids and Risers (Adapters) can be found on pg 46. Security & Safety products start on pg 71. Tools & Accessories start on pg 89.



CIP7B
3-Piece CIP 7" Valve Box
Fig. No. 9000

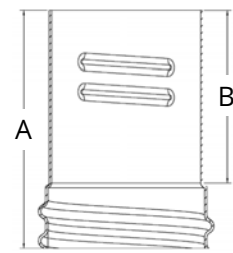
PART SERIES	EXTENSION RANGE DIM. A	TOP SECTION WITH LID			MIDDLE SECTION			NO. P-6 BASE		TOTAL WEIGHT (W/LID)
		NO.	WT.	DIM. B	NO.	WT.	DIM. C	HEIGHT	WEIGHT	
CIP7BI	27-39	75	81.5	15	P-81	3	16	10	2.5	86.0
CIP7BJ	33-45	75	81.5	15	P-82	4	20			88.0
CIP7BK	39-51	75	81.5	15	P-83	5	26			89.0
CIP7BL	39-60	76	111.0	26	P-83	5	26			118.5
CIP7BM	60-72	76	111.0	26	P-84	7	36			120.5
CIP7BN	72-84	76	111.0	26	P-85	9	48			122.5

*Square top only available in 10" length.

Standard Plastic Extensions for CIP 7" Valve Boxes

- Used to extend total length of the valve box
- Stack extensions to achieve to desired length
- Available in screw-type adjustment only

PART #	INCREASES LENGTH DIM. A	OVERALL LENGTH DIM. B	WEIGHT
P7E712	8	12	1.67
P7E72	20	24	3.00



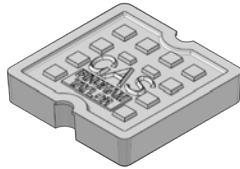
P7E
7" Valve Box
Screw-type Extension
Fig. No. 9015-X

7" VALVE BOXES

Cast Iron Lids for Any 7" Valve Box



CUL7L-RD
Standard 7" Round Lid



CUL7L-SQ
Standard 7" Square Lid



I7LB-L
7" Round Locking Lid

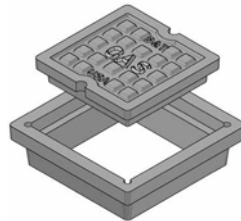
Cast Iron Paving Risers (Adapters) for Any 7" Valve Box



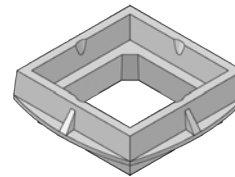
CUL7ARH12
7" Rite Hite Screw-type
Adapter
2½-12" Raise



CUL7A7
7" Round Riser
2¼" Raise Only
Fig. No. 5040

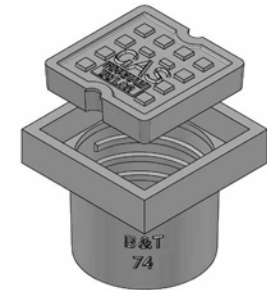


CUL7A1SQ
7" Square Riser w/ special
7" Square Lid
with 1" Raise
Fig. No. 6007-A



CUL7A2SQ
7" Square Riser w/ Flange
2¼" Raise
Fig. No. 6007-B

Cast Iron Square Top Section and Matching Lid for 7" Valve Box



CUL7T74SQ
7" Square Head Top Section
& matching 7" Square Lid
Fig. No. 5020 (Top Section)

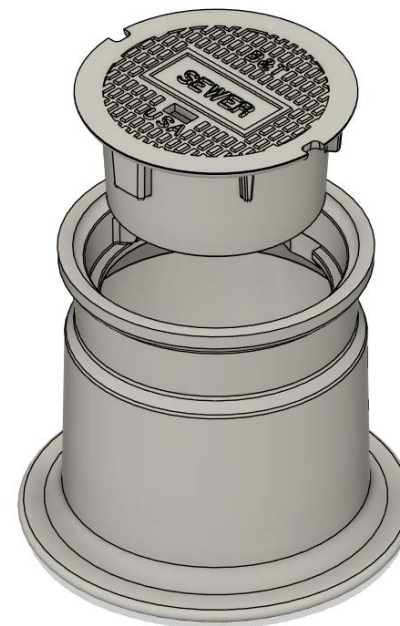
10" & LARGER VALVE BOXES

Mark Series Valve Boxes

Our Mark Series valve boxes are a cast iron alternative to traditional concrete solutions, delivering enhanced performance and longevity. Specifically designed to withstand heavy traffic, these valve boxes boast unmatched durability, easier installation, and extended service life, making them the ideal choice for utility management.

The Mark Series also means fewer replacements due to breakage during transit, unlike concrete boxes, which significantly reduces installation hassles. This not only supports more sustainable infrastructure practices but also offers a cost-effective, superior alternative to traditional concrete boxes.

- Mark V are 10" diameter and Mark VII are 10.25" diameter
- Heavy-duty rim and lid are H20 load rated, suitable for roadway use
- 100% cast iron
- Large diameter fits over 8" PVC
- Choice of round lid (standard) or triangular lid with lettering options including WATER (W), GAS (G), SEWER (S), CP Test (CPT), IRRIGATION (IRR), RECLAIMED WATER (RW), BLANK (B), or your own customization
- Powder coating available for lids, which can significantly reduce the risk of corrosion, ensuring the longevity of the product especially in humid climates



I10BHVY-4SK

Mark V - 10" Round Rim with Flange
& Lid with 4" skirt

10" & LARGER VALVE BOXES

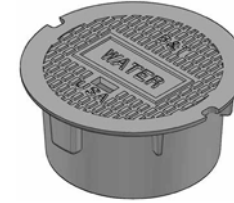
Mark Series 10" & 12" Lids

- Lid lettering options including WATER (W), GAS (G), SEWER (S), CP Test (CPT), IRRIGATION (IRR), RECLAIMED WATER (RW), BLANK (B) for use with your own lettered plate, or your own customization
- Powder coating can significantly reduce the risk of corrosion, ensuring the longevity of the product especially in humid climates

PART SERIES	LID	DESCRIPTION	DIAMETER	WEIGHT
CUL10LHVY	Mark V - 10" Round	2½" Skirt	9.8	15
CUL10LHVY4	Mark V - 10" Round	4" Skirt	9.8	21
I10LBHVY-L	Mark V - 10" Round	Locking Bar	9.8	18
CUL10LT	Mark V - 10" Triangle	Standard Lid	N/A	21
GRE12LHVY	Mark VII - 12" Round	2½" Skirt	11.1	16
GRE12LHVYLS	Mark VII - 12" Round	4" Skirt	11.1	26



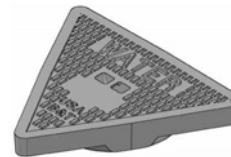
CUL10LHVY
Mark V - 10" Round
with 2½" Skirt



CUL10LHVY4
Mark V - 10" Round
with 4" Skirt (Standard)



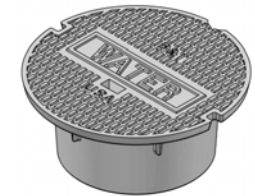
I10LBHVY-L
Mark V - 10" Round
Locking Lid



CUL10LT
Mark V - 10" Triangle



GRE12LHVY
Mark VII - 12" Round
with 2½" Skirt



GRE12LHVY-LS
12" Round 4" Skirt

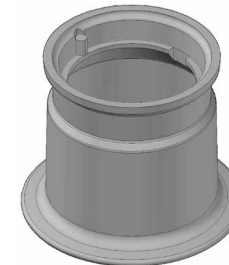
Mark Series 10" & 12" Rims

TO ORDER - SPECIFY: Rim Part Number, Lid Part Series, Lid Lettering. Tools & Accessories start on pg 89.

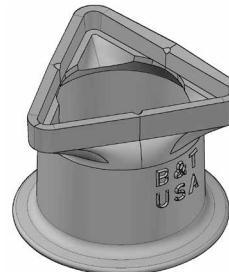
PART #	RIM	FLANGE	INSIDE DIAMETER	HEIGHT	WEIGHT
CUL10RHVY	Mark V - 10" Round	No Flange	10	11.5	32
CUL10RHVYF	Mark V - 10" Round	Flange	10	11.5	44
GRE10RTF	Mark V - 10" Triangle	Flange	10	11.0	56
CUL12RHVYF	Mark VII - 12" Round	Flange	10.25	11.5	50



CUL10RHVY
Mark V - 10" Round
No Flange



CUL10RHVYF
Mark V - 10" Round
with Flange



GRE10RTF
Mark V - 10" Triangle
with Flange



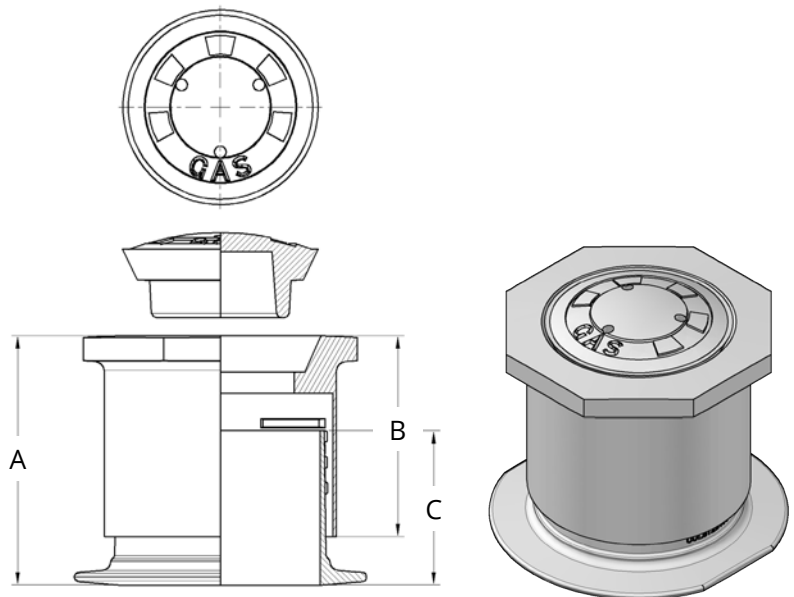
CUL12RHVYF
Mark VII - 12" Round
with Flange

10" & LARGER VALVE BOXES

Cast Iron 10" Valve Boxes - I8B199

- Octagonal roadway box with round convex lid
- Convex lid is extra heavy and designed to prevent lid from dislodging in extreme traffic conditions
- Threads are Drop-turned for height adjustment
- Extension & paving risers found on pg 50

PART SERIES	EXTENSION RANGE DIM. A	TOP SECTION WITH LID		BOTTOM SECTION		TOTAL WEIGHT (W/LID)
		WT.	DIM. B	WT.	DIM. C	
I8B199	13-17	168	12	40	9	208

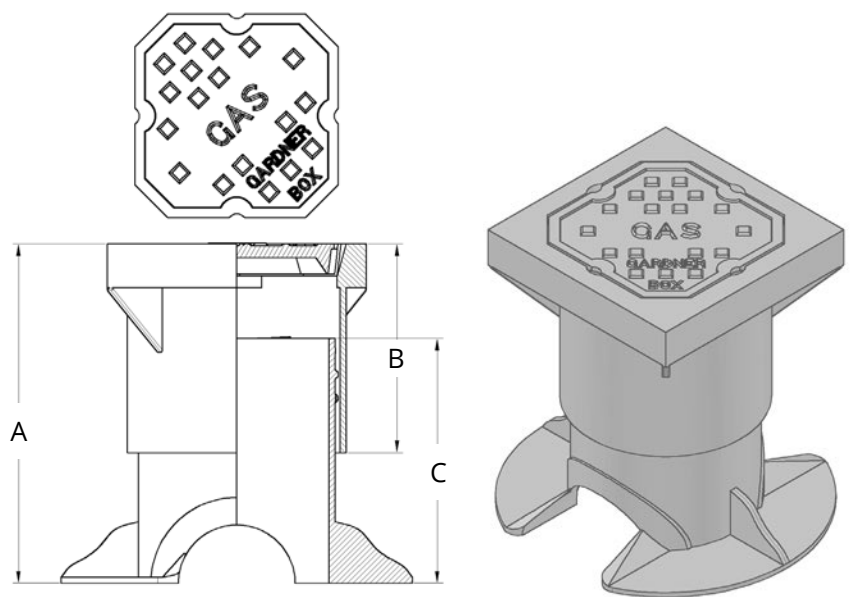


I8B199
10" Cast Iron Valve Box
Fig. No. 6050

Cast Iron 12" Square Valve Boxes - I8B

- Designed to withstand extreme traffic conditions
- Square head valve box with 12" round shaft
- Available in screw-type adjustment only
- Extensions & paving risers found on pg 50

PART SERIES	EXTENSION RANGE DIM. A	TOP SECTION WITH LID		BOTTOM SECTION		TOTAL WEIGHT (W/LID)
		WT.	DIM. B	WT.	DIM. C	
I8B200	18-26	145	13	66	15	211
I8B201	24-37	173	19	77	21	250

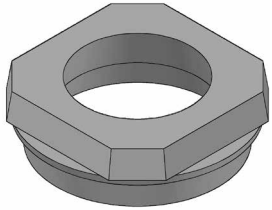


I8B
12" Square Cast Iron Valve Box
with Flange
Fig. No. 6012

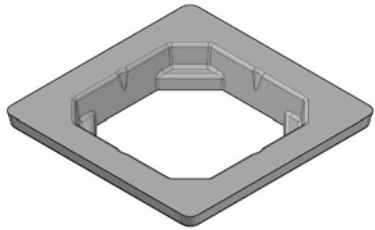
10" & LARGER VALVE BOXES

Risers for Cast Iron 10" & 12" Valve Boxes - I8B

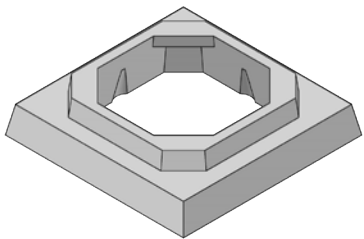
PART #	LID SHAPE	RISE HEIGHT	RISER WT.	LID WT.	NOTE
CUL812A1	Round	1	60	33	-
CUL812A2.5	Round	2½	83.5	33	-
CUL812A1SQ	12" Square	1	55	27	Uses special lid
CUL812A1.5SQ	12" Square	1½	67	27	Uses special lid
CUL812A2.5SQ	12" Square	2½	95	40	Uses lid from existing box



CUL812A1 | CUL812A2.5

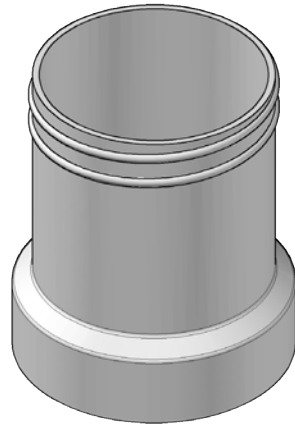


CUL812A1SQ | CUL812A1.5SQ



CUL812A2.5SQ

12" Cast Iron Extensions



CUL812E100

12" Extension

Extends box up to 12"
Used with the 12" Square and 10"
Octagonal Valve Boxes
Fig. No. 6012-X

Standard Plastic 10" Valve Box #199 - P10B

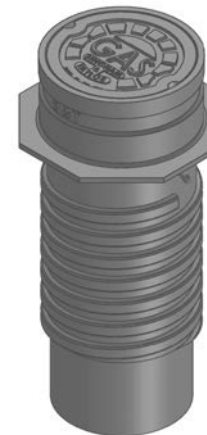
- Designed for use over valve that requires direct maintenance at the outer flanges
- 10" inner diameter allows tools to be operated directly from surface
- Screw or sliding adjustment available
- Lid lettering WATER (W) or GAS (G)
- Heavy-duty cast iron frame and lid
- Easily adjust length in the field as needed

ADJUSTMENT STYLE	EXTENSION RANGE	TOP SECTION	BOTTOM SECTION
Screw or Slide	27-37	20	18
Screw	40-50	20	30
Slide	40-62	26	36
Slide	51-96	48	48

P10B199C2737-J

10" Screw-type
Valve Box

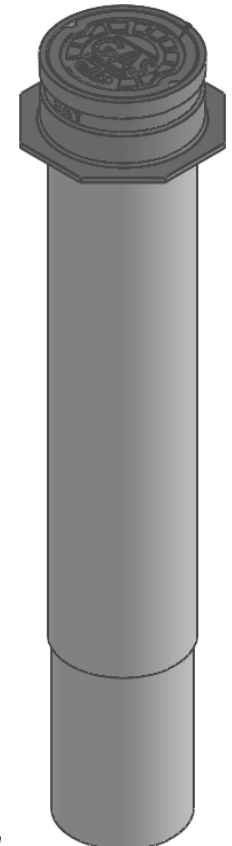
18" length shown



P10B199

10" Slide-type
Valve Box

36" length shown

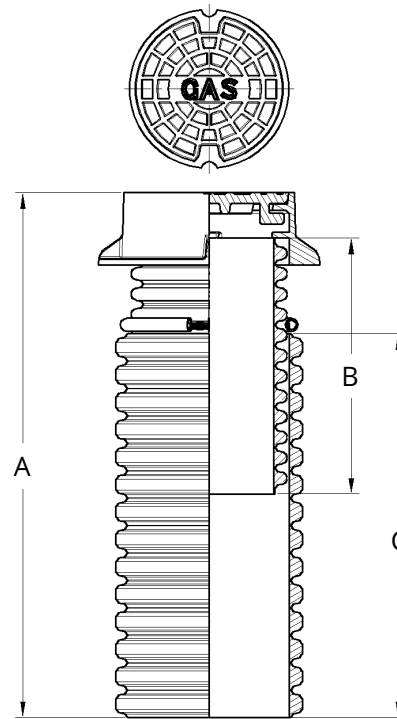


10" & LARGER VALVE BOXES

Standard Plastic 12", 15", 18", & 24" Valve Boxes

- Designed for use over larger poly and steel valves that require direct maintenance. Heavy-duty, double-wall corrugated plastic top and bottom sections. These can easily be cut in the field as needed.
- The 12" diameter boxes are a 3-piece telescoping box with smaller inner diameter top and larger inner diameter bottom. The 15" diameter box with 24" top also comes in the 3-piece telescoping box. The 15" diameter boxes that are 24" and longer are a single piece, non-telescoping box. All the 12" and 15" diameter boxes feature a heavy-duty cast iron rim and **Drop-turn locking lid** rated for highway usage.
- 18" & 24" valve boxes are a single piece, non-telescoping box with a heavy-duty cast iron rim and **bolt-down locking lid** rated for highway usage.
- Drop-in non-locking lids available
- Recommend the use of the ADP-MP stabilizer (pg 74)

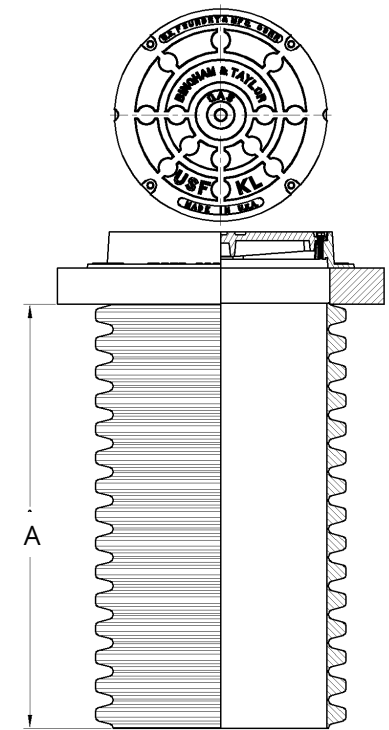
PART SERIES	TOP INNER DIA.	TOP LENGTH DIM. B	BOTTOM INNER DIA.	BOTTOM LENGTH DIM. C	EXT. DIM. A
P12B	12	24	15	24	32-49
	12	24	15	36	44-61
	12	24	15	48	56-73
	12	36	15	36	44-73
	12	36	15	48	56-85
	12	36	15	60	68-97
	12	36	15	72	80-109
P15B	15	24	18	24	44-61
	15	24	18	36	46-71
P15B*	15	24*	-	-	28
	15	36*	-	-	40
	15	48*	-	-	52
	15	60*	-	-	64
	15	72*	-	-	76



P12B / P15B

Fig. No. 1201 & Fig. No. 1501

PART SERIES	INNER DIA.	DIM. A
P18P	18	72
	18	84
	18	120
P24P	24	48
	24	72
	24	96
	24	120
	24	144



P18P / P24P

Fig. No. 1801 & Fig. No. 2401

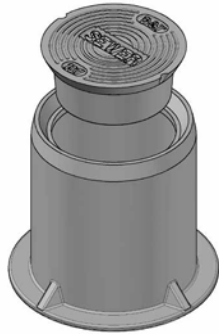
*Valve box is a single piece of corrugated pipe with consistent diameter throughout the box.

CLEANOUT BOXES

Cast Iron Cleanout Boxes



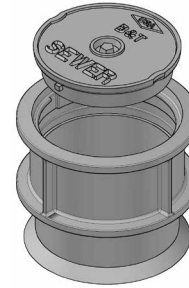
I5B8250S
#8250
Fits: 4" Cleanout



IFL107S
#107
Fits: 4" Cleanout



**CUL5R668DT +
CUL5L668DTHSB**
#668
Fits: 6" Cleanout

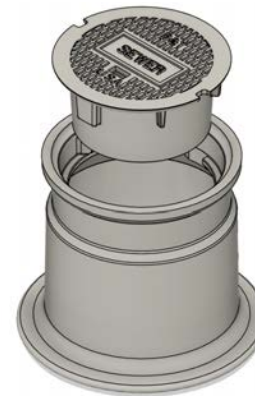


IFL888DTS
#888
Fits: 8" Cleanout
**Cast Iron Rim & Lid with
Standard Plastic Pipe*



I8B7621
#7621
Fits: 10" Cleanout
Frame is reversible

PART SERIES	CLEANOUT SIZE	INNER DIA.	HEIGHT	LID WEIGHT	BOX WEIGHT	AVAILABLE RISERS
I5B8250S	4"	6	10	13	21	1-6"
IFL107S	4"	8	10	11	29	1, 1½, 2
CUL5R668DT + CUL5L668DTHSB	6"	6	5¼	6	14	-
IFL888DTS*	6"	8	9	13	38	-
I8B7621	8"	10	4	19	22	-
I10BHVYS4SK	8"	10	11½	24	44	-
I8B1975CS	8"	11	8	15	44	1½, 2

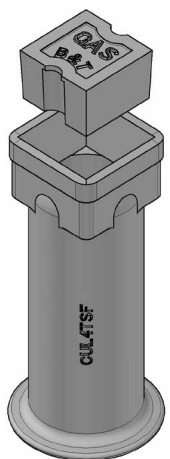


I10BHVYS4SK
#Mark V
Fits: 8" Cleanout



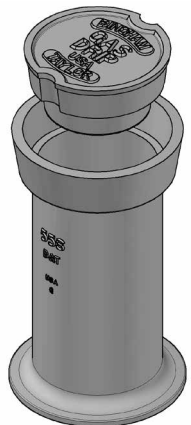
I8B1975CS
#1975
Fits: 8" Cleanout

Cast Iron Drip Boxes



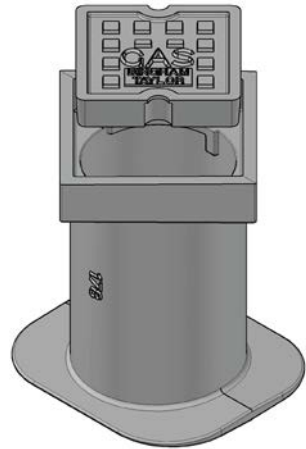
I4B106GSQ
#106
Square Head Drip Box

- Lid is vented
- Lid lettering: GAS
- Total weight 33 lbs
- Risers available (pg 46)



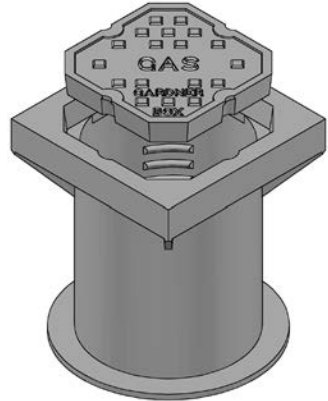
I5TL55G
#55
Round Head Drip Box

- Available as round head or square head
- Available with standard Gas lid or vented Gas lid
- Lid lettering: GAS or GAS DRIP
- Round total weight 43 lbs
- Square total weight 54 lbs
- Risers available (pg 46)



I7B178GSQ
#178
Square Head Drip Box

- Lid lettering: GAS
- With bottom flange
- Total weight 88 lbs
- Risers available (pg 46)



I8B48GSQ
#48
Octagonal Head Drip Box

- Lid lettering: GAS
- 2" round bottom flange
- Total weight 188.5 lbs
- Risers available (pg 46)

NOTES:



BINGHAM & TAYLOR

Proudly Made in the USA

METER PITS & METER BOXES

*All measurements in tables are in **inches** or **pounds** unless indicated otherwise.*

Meter Pits

At Bingham & Taylor, we take pride in crafting meter pits that meet the highest standards of durability, reliability, and performance. Our meter pits, available in both injection-molded and rotationally molded varieties, are engineered to provide exceptional strength and longevity under the most demanding conditions. Whether you're looking for cost-effective solutions or superior resilience, our meter pits are designed to accommodate your needs. Each type is meticulously designed to ensure ease of installation, resistance to environmental factors, and compatibility with various applications.

While engineered for H2O load rating, our durable meter are ideally suited for pedestrian and incidental light-duty traffic. For optimal performance, meter pits should be stored or installed in temperatures ranging from -40°F to 140°F.

With additional options for frames, lids, extensions and other accessories, Bingham & Taylor offers a comprehensive solution for your meter pit needs.



2-Piece Injection-Molded Meter Pit with Cast Iron Frame & Lid



Rotational-Molded Large Diameter Meter Pit

Injection-Molded Meter Pits - MMP

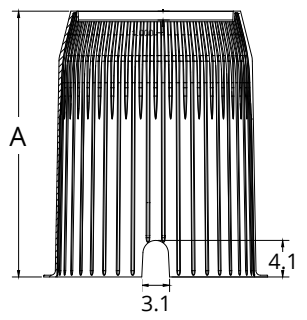
Our injection-molded meter pits are crafted from high-grade, lightweight, and robust plastic, engineered to withstand crush forces of up to 20,000 lbs. These meter pits are not only a cost-effective solution but also offer rapid delivery times, ensuring efficiency and reliability in your projects. The specially engineered ribbed interior enhances strength and stiffness, while the 0.5" nominal wall thickness, including ribbing, ensures long-lasting durability.

- **Material:** 100% virgin polypropylene (no recycled content)
- **Strength:** Whiel engineered for H2O load rating suitable for roadway use, these meter pits are ideally suited for pedestrian and incidental light-duty traffic
- **Temperature Resistance:** Resistant to heat, cold, and UV rays
- **Design:** Rigid base for easy installation and settlement resistance
- **Visibility:** White exterior and interior for enhanced visibility
- **Styles Available:** Straight or bullet-nosed
- **Dimensions:** Available in 18", 20", and 24" diameters with various lengths
- **Flexibility:** One-piece or two-piece options available for a wide range of heights
- **Applications:** Suitable for use as a meter pit or large valve box
- **Extensions:** Meter pit extensions available in multiple lengths, easily and securely mounted (clips) to 24" diameter meter pits for total heights up to 48"

METER PITS

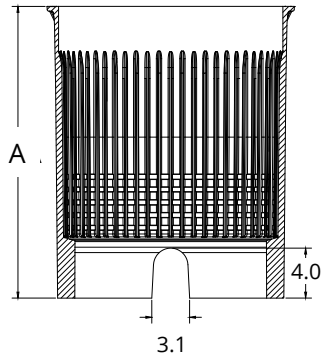
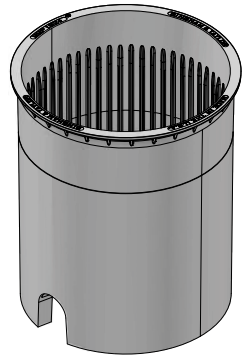
Bullet-Nosed Injection-Molded Meter Pits - MMP

PART #	TOP DIAMETER	BOTTOM DIAMETER	HEIGHT DIM. A
MMP182230	18	22	30
MMP202430	20	24	30



Straight-Walled Injection-Molded Meter Pits - MMP

PART #	TOP DIAMETER	HEIGHT DIM. A
MMP1824	18	24
MMP1830	18	30
MMP1836	18	36
MMP2030	20	30
MMP2036	20	36
MMP2430	24	30



Injection-Molded Meter Pits Material Specifications

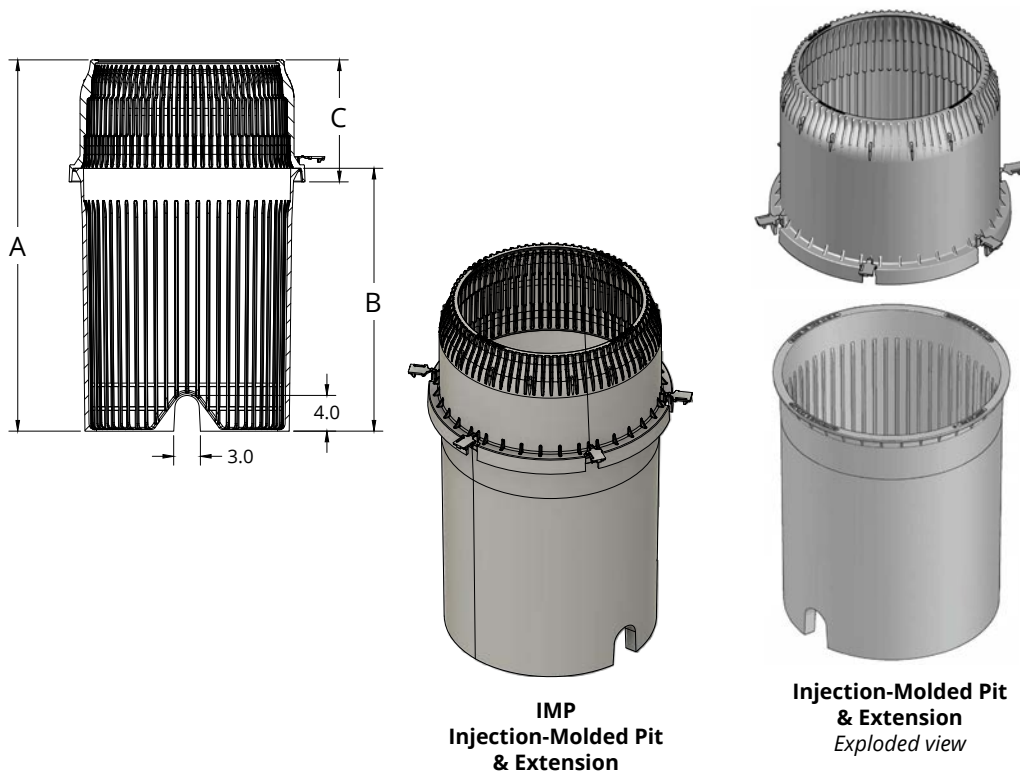
PHYSICAL PROPERTY	ASTM TEST METHOD	MINIMUM VALUES
High Impact Copolymer Polypropylene	D-5857	-
Specific Gravity	D-1505	0.9 g/cc
Tensile Strength	D-638	3,200 psi
Elongation at Yield	D-638	9%
Flexural Modulus	D-790	140,000 psi
Heat Distortion Temp (66 psi)	D-648	165° F
Melt Flow Rate @ 230°C	D-1238	4 g/10 min

METER PITS

2-Piece Injection-Molded Meter Pits & Extensions - IMP

- 2-piece includes a 24" diameter pit or bottom plus an extension
- Extensions mount easily and securely clips onto 24" meter pits for total heights up to 48"

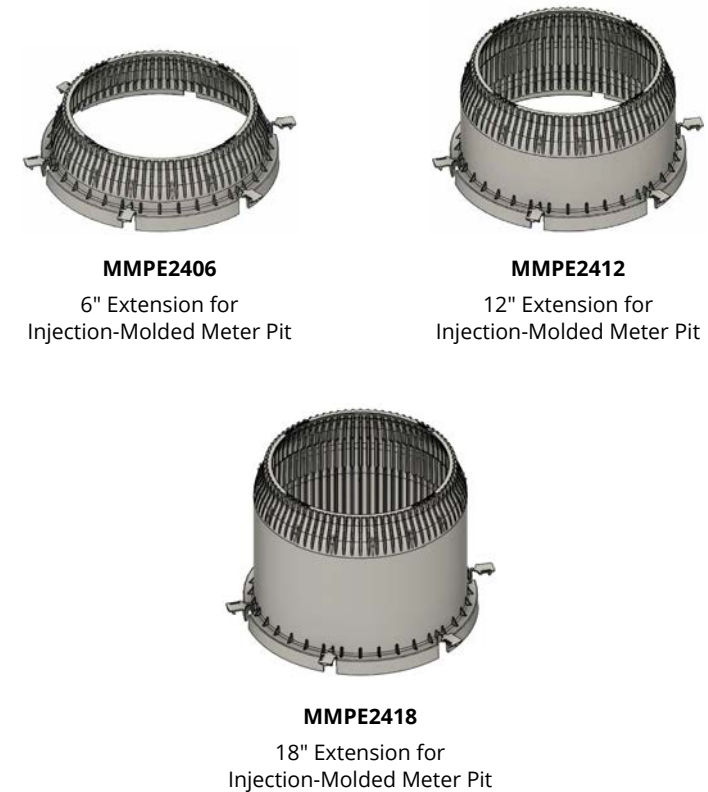
PART #	TOP DIAMETER	BOTTOM DIAMETER	TOTAL HEIGHT DIM. A	METER PIT HEIGHT DIM. B	EXTENSION HEIGHT DIM. C
IMP202436	20	24	36	30	6
IMP202442	20	24	42	30	12
IMP202448	20	24	48	30	18



Extensions for Injection-Molded Meter Pits - MMPE

- Used to extend total length of the meter pit
- Clips onto the pit (base)

PART #	TOP DIAMETER	BOTTOM DIAMETER	HEIGHT
MMPE2406	20	24	6
MMPE2412	20	24	12
MMPE2418	20	24	18



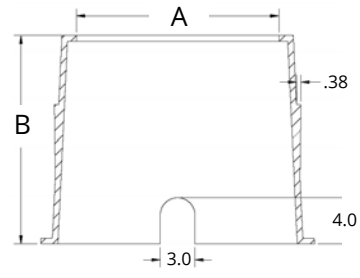
METER PITS

Rotational-Molded Meter Pits - PMP

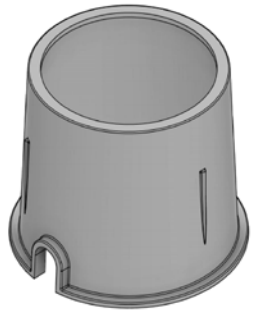
Our rotational-molded meter pits are designed for superior performance and resilience. Made from high-quality polyethylene copolymer, these pits offer a 0.5" nominal wall thickness, ensuring robust durability. They are a reliable choice for a variety of installations, providing long-lasting service even in challenging environments.

- **Material:** Polyethylene copolymer
- **Strength:** Engineered to meet a proof load rating of 20,000 lbs.
- **Temperature Resistance:** Resistant to cold, heat, and UV rays
- **Design:** Rigid base to resist settling during installation
- **Visibility:** White interior for easier visibility
- **Pipe Entry:** Two pipe entry areas (3" and 4")

Small Diameter Rotational-Molded Meter Pits - PMP



PART #	TOP DIAMETER DIM. A	HEIGHT DIM. B
PMP1518	15	18
PMP1818	18	18
PMP2020	20	20
PMP2024	20	24
PMP2418	24	18

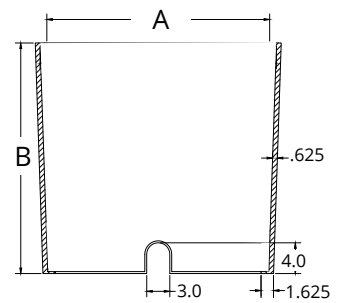


Rotational-Molded Meter Pit Material Specifications

PHYSICAL PROPERTY	ASTM TEST METHOD	MINIMUM VALUES
Specific Gravity	D-792	0.94 g/cc
Tensile Strength	D-638	2,900 psi
Elongation at Yield	D-638	12%
Flexural Modulus	D-790	119,000 psi
Heat Distortion Temp (66 psi)	D-648	144° F
Melt Flow Rate @ 190°C	D-1238	3.5 g/10 min

Large Diameter Rotational-Molded Meter Pits - PMP3

PART #	TOP DIAMETER DIM. A	HEIGHT DIM. B
PMP3030	30	30
PMP3630	36	30
PMP3636	36	36

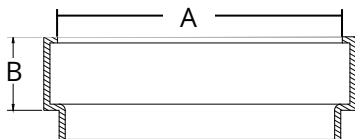


METER PITS

Rotational-Molded Straight Meter Pit Extensions - MPE

- For use with both injection-molded and rotational-molded meter pits
- Stack extensions to achieve desired length

PART #	TOP DIAMETER DIM. A	INCREASES HEIGHT DIM. B
MPE1803	18	3
MPE1806		6
MPE1812		12
MPE2002	20	2
MPE2004		4
MPE2006		6
MPE2008		8
MPE2403	24	3
MPE2406		6
MPE3003	30	3
MPE3006		6
MPE3603	36	3
MPE3606		6

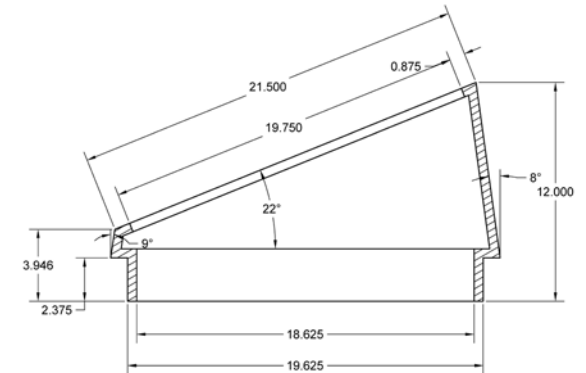


Rotational-Molded Meter Pit Angled Extensions - MPE2022

- Extension angle is 22°
- Use with injection-molded or rotational-molded 20" diameter meter pits



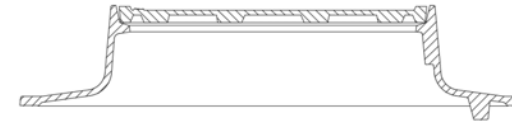
MPE2022



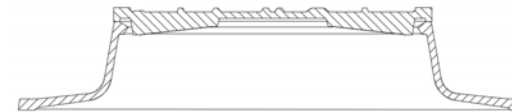
Cast Iron Meter Frames - CULF

Cast iron meter frames increase the durability, load-bearing capacity, resistance to environmental factors, and stability while lowering the maintenance of the meter pit.

- **A-Style (Recessed Style) Meter Frames:** Designed for flush installation, allowing the meter lid to sit level with surrounding surfaces like sidewalks and lawns, providing a clean, streamlined appearance.
- **C-Style (Overlapping Fit) Meter Frames:** Features an overlapping lid design that covers the top of the frame, ideal for lawn installations where extra coverage can help protect the meter from outdoor elements.
- **Heavy-Duty Frame with Gussets:** Engineered with added gussets for enhanced stability, this frame is optimal for areas with high traffic or unstable soil, delivering extra strength to handle demanding conditions.
- **Frame with Spikes:** Equipped with anchoring spikes to secure the frame, preventing settling in installations on concrete walkways or driveways, ensuring long-term stability and level placement.
- **2-Piece Adjustable Frame:** Provides flexibility by allowing the frame top to be adjusted to the final grade, simplifying installation when surface levels vary.
- **Flat Frame:** With a lower profile than standard frames, the flat frame is primarily used in warmer climates where minimal coverage is needed, allowing easy access and installation without the requirement of 4 inches of dirt.
- **Large Meter Pit Frames:** For meter pits larger than 21 inches, expander and monitor rings are necessary for added stability and adaptability (see pg 64 for details).



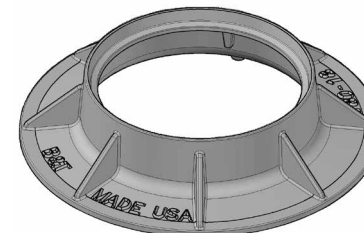
A-Style Frame
Meter Lid Fits Inside Frame Rim



C-Style Frame
Meter Lid Fits Over Frame Rim



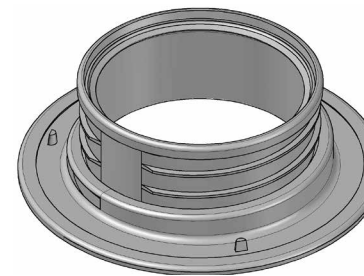
Standard Meter Pit Frame



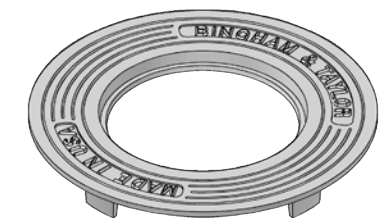
**Heavy Meter Pit Frame
with Gussets**



**Meter Pit Frame
with Spikes**



**2-Piece Adjustable
Meter Pit Frame**



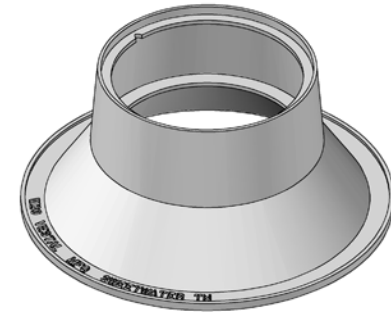
Flat Meter Pit Frame

METER FRAMES

Cast Iron Frost Proof Meter Frames

- Frost proof meter frames are ideal for use in colder climates requiring a deeper bury
- Inner plastic frost pan provides additional air block barrier
- Frame fits any of our A-style lids
- Frame height is 10"
- Fits 20" meter frames

PART SERIES	STYLE	FITS METER PIT OPENING	RIM DIAMETER	CLEAR DIAMETER	METER LID SEAT DEPTH	TOTAL WEIGHT
FRW20	A	20	12.5	11.3	0.55	50



Frost Proof Meter Frame

Cast Iron Meter Frames for 18" Meter Pits

PART SERIES	DESCRIPTION	STYLE	RIM DIAMETER	CLEAR DIAMETER	METER LID SEAT DEPTH	TOTAL WEIGHT
18018AW	Standard Frame	A	12.5	11.5	0.7	27
18018AWHVG	Heavy Weight with Gussets	A	12.5	11.5	0.7	37
18018SP	Frame with Spikes	A	12.8	11.5	0.5	35
18018ACT/ACB	2-Piece Adjustable Frame	A	12.8	11.5	0.5	45
18018WSSC	Standard Frame	C	12.6	11.5	-	23
18018CGS	Heavy Weight with Gussets	C	12.7	11.5	-	37
180185215	Larger Clear Opening	C	16.0	15.0	-	20
6130	Flat Frame	A	12.4	11.4	0.7	40
6135	Heavy Weight Flat Frame	A	12.4	11.4	0.7	70

Pictures of frames on pg 61

METER FRAMES

Cast Iron Meter Frames for 20" Meter Pits

PART SERIES	DESCRIPTION	STYLE	RIM DIAMETER	CLEAR DIAMETER	METER LID SEAT DEPTH	TOTAL WEIGHT
18020	Standard Frame	A	12.9	11.5	0.5	38
18020AWEH	Standard Frame	A	12.6	11.5	0.7	38
18020AWEHG	Heavy Weight with Gussets	A	12.6	11.5	0.7	38
18020ACT/ACB	2-Piece Adjustable Frame	A	12.8	11.5	0.5	44
18020C	Standard Frame	C	12.8	11.5	-	29
18020CLT	Standard Frame	C	12.4	11.5	-	33
18020CHV	Heavy Weight Frame	C	12.8	11.5	-	38
18053A	Larger Opening - 15"	A	16.2	15.0	0.7	30
18053C	Larger Opening - 15"	C	16.2	14.75	-	26
18053CHV	Larger Opening - 15" - with Gussets	C	16.2	14.75	-	28

Pictures of frames on pg 61

Cast Iron Meter Frames for 21" Meter Pits

PART SERIES	DESCRIPTION	STYLE	RIM DIAMETER	CLEAR DIAMETER	METER LID SEAT DEPTH	TOTAL WEIGHT
18021AWEH	Standard Frame	A	12.5	11.5	0.7	36
18021AWEHHV	Heavy Weight with Gussets	A	12.5	11.5	0.7	38
18021WSSC	Standard Frame	C	12.6	11.5	-	30

Pictures of frames on pg 61

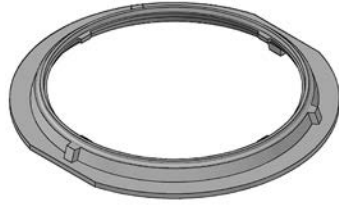
METER FRAMES

Cast Iron Meter Expander Rings & Monitor Ring

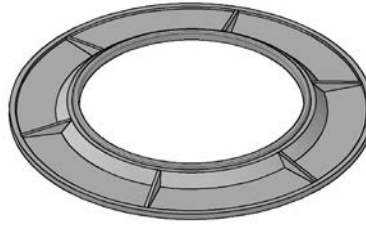
Meter pits larger than 21" require an expander ring and monitor ring. While not required, expander rings can also be used with 18" and 20" frames.



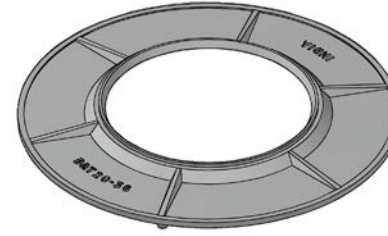
18 x 24 Expander Ring



20 x 24 Expander Ring



20 x 30 Expander Ring



20 x 36 Expander Ring



Monitor Ring

Cast Iron Expander Rings & Monitor Rings for Meter Pits

PART #	DESCRIPTION	METER PIT DIAMETER	STYLE	RIM DIAMETER	CLEAR DIAMETER	METER LID SEAT DEPTH	TOTAL WEIGHT
VESMER1824	18x24 Expander Ring	24	-	25.1	17.9	-	24
GREMER2024	20x24 Expander Ring	24	-	25.1	19.5	-	29
GREMR20	20 Monitor Ring	24	A	21.0	19.8	0.75	54
EJORDR30	20x30 Expander Ring	30	-	31.75	19.5	-	55
GREMR20	20 Monitor Ring	30	A	21.0	19.8	0.75	54
EJORDR36	20x36 Expander Ring	36	-	36.0	19.3	-	85
GREMR20	20 Monitor Ring	36	A	21.0	19.8	0.75	54

Cast Iron Meter Lids - IFL180

- Cast Iron lids come with pentabolts and lifting worm gears
- Drop-in lids available
- Oblong recessed hole allows for a variety of meter transmitters
- Custom lettering or logo available on lids

TO ORDER IFL180 - SPECIFY: Part Series, Style, Diameter

PART SERIES IFL180	DESCRIPTION	NOMINAL DIAMETER	WEIGHT
AWEH-SL	Solid	10.5	11
		12.5	11
		16.0	20
		21.0	38
AWEH-HVSL	Solid - Heavy Weight	12.5	23
AWEH-TR	One Non-Recessed Hole	12.5	11
		16.0	20
AWEH-HV1	One Non-Recessed Hole Heavy Weight	12.5	23
TR2	Two Non-Recessed Holes	12.5	14
		16.0	20
DP	One Recessed Hole	10.5	11
		12.5	14
		21.0	38
DP2	Two Recessed Holes	12.5	14



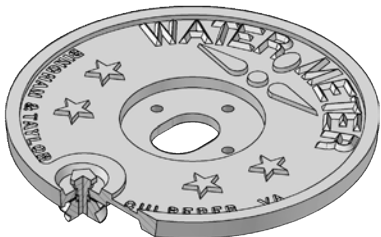
AWEH-SL



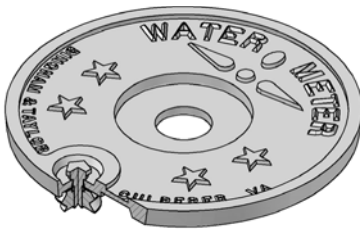
AWEH-TR



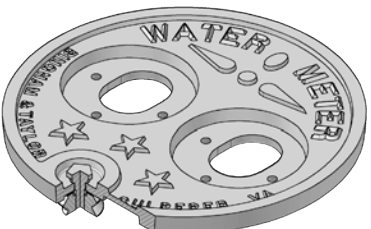
TR2



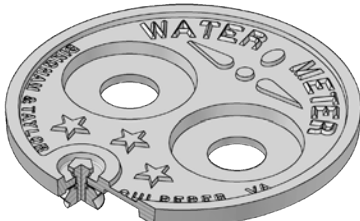
DP - Oblong



DP - Circular



DP2 - Oblong



DP2 - Circular

Maverick Composite Water Meter Lids

Our Maverick Meter Lids are made from fiberglass reinforced polypropylene, providing rigidity and structural integrity. This combination results in a composite material that can withstand higher stress and meets a proof load rating of 20,000 lbs.

Designed for Durability

The material and unique underside ribbing design make these lids highly durable and resistant to impact, wear, and fatigue, delivering a long service life under challenging conditions, including mechanical stress. These lids are resistant to environmental degradation, including UV radiation, moisture, and temperature extremes. The pentabolt and worm gear mechanism secure the lid to the frame.

AMI/AMR Versatility

Maverick Lids are made from materials that do not degrade the radio signal from your transmitter. The thru-hole allows for any type of Advanced Metering Infrastructure/ Automatic Meter Reading (AMI/AMR) transmitter to be mounted through the lid with the simple addition of a Smart insert. For transmitters that are mounted underneath the lid, our solid lids have brackets and screw holes to secure your transmitter.

- Smart Inserts make it easy to swap out transmitters.
- Inserts available for Badger Orion, Mueller, Neptune, and Sensus. Inserts may fit other AMR systems and we can work with your team to develop a solution that suits your needs.
- Under the lid mounting with threaded stand-offs or brackets on the solid/c-clip lid.

Customizable

Maverick Meter Lids are customizable with your name or logo and available in a broad spectrum of colors for easy identification to establish ownership, deter theft, and provide standardization.



The material and unique underside ribbing design make our Maverick meter lids highly durable, delivering a long service life under challenging conditions



**Standard Solid Style
Maverick Meter Lid**



**Maverick Meter Lid
with Mueller AMR insert**

Maverick Composite Water Meter Lids - PLDA

- **Material & Durability:** Crafted from composite fiberglass-reinforced polypropylene, these lids offer robust strength and durability. The material is UV, heat, and cold resistant, as well as slip-resistant for added safety and longevity.
- **Locking Mechanism:** Equipped with a standard pentabolt and worm gear mechanism for secure closure. A pentabolt hand key is available (see Accessories, pg 91).
- **Lid Options:** Solid Lids and Thru-Hole Lids are available.
- **Thru-Hole Feature:** Allows for seamless integration with any AMI/AMR transmitter, including models by Badger, Mueller, Neptune, Orion, and Sensus.
- **Lettering:** Standard is WATER METER. Custom lettering options are available.
- **Enhanced Stability for Large Sizes:** For diameters of 21.25", recommend the use of cast iron ring with these 12.25" Maverick lid to increase stability and strength.



PLDA-S
Solid Maverick Water Meter Lid



PLDA-T
Maverick Water Meter Lid with Thru-Hole Fits Neptune Transmitter

TO ORDER PLDA - SPECIFY: Part Number and Diameter

OUTER DIAMETER DIM A	RIM THICKNESS DIM B	SKIRT DIAMETER	PART #				
			SOLID / C-CLIP	BADGER ORION	MUELLER	NEPTUNE	SENSUS
11¼	0.5	9¾	PLDA11.25A5S	PLDA11.25A5TB	PLDA11.25A5TM	PLDA11.25A5TN	PLDA11.25A5TS
12¼	0.7	11¼	PLDA12.25A7S	PLDA12.25A7TB	PLDA12.25A7TM	PLDA12.25A7TN	PLDA12.25A7TS
12½	0.5	11¼	PLDA12.50A5S	PLDA12.50A5TB	PLDA12.50A5TM	PLDA12.50A5TN	PLDA12.50A5TS
12¾	0.5	11½	PLDA12.75B5S	PLDA12.75B5TB	PLDA12.75B5TM	PLDA12.75B5TN	PLDA12.75B5TS
13	0.5	11¾	PLDA13.00C5S	PLDA13.00C5TB	PLDA13.00C5TM	PLDA13.00C5TN	PLDA13.00C5TS



Any 12.25" Maverick Meter Lid can be used with
 Flat Frame (CULFRR2112A)
 20" Monitor Ring (GREMR20)
 Outer Ring Diameter: 21.25"



PLDBRC
C-Clip for Solid Lid



PLDIM
Insert for Mueller Transmitter



PLDIS
Insert for Sensus Transmitter



PLDIB
Insert for Orion Transmitter

METER BOXES

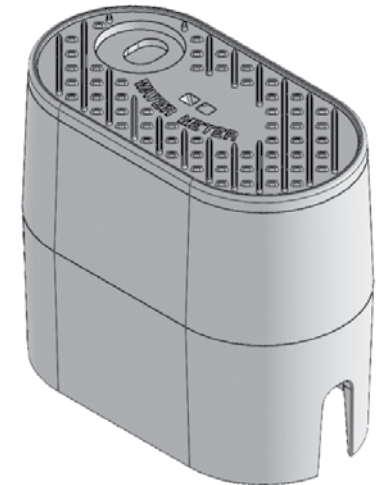
Cast Iron Water Meter Box Assemblies - IMBX

- Assembly includes meter box and cast iron lid
- Deeper cover seat area allows for lid to fit securely
- Tested to exceed a proof load rating of 53,000 lbs.
- Lids include pick holes for easy installation and removal
- Choose between solid or recessed thru-hole (AMR/AMI) styles
- Standard lid is "WATER METER". Custom lid lettering available.
- Lid design meets ADA (American Disabilities Act) requirements

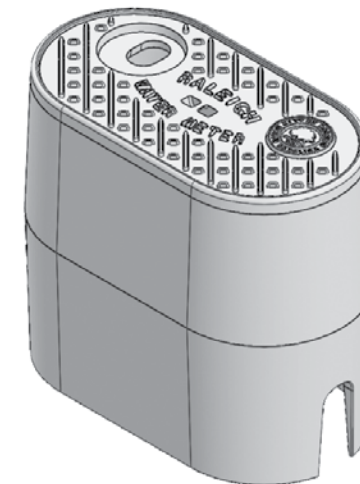
PART #	METER BOX SPECS WITHOUT LID					LID SPECIFICATIONS		
	STYLE	HT.	L.	W.	WT.	STYLE	LETTERING	WT.
IMBX1RPICK	MBX-1	12	20.3	10.6	42.3	Solid	WATER METER	18
IMBX1WM	MBX-1	12	20.3	10.6	42.3	Thru-Hole	WATER METER	13.5
IMBX2RPICK	MBX-2	18	19.3	9.8	77.0	Solid	WATER METER	18
IMBX2WM	MBX-2	18	19.3	9.8	77.0	Thru-Hole	WATER METER	13.5
IMBX2CRTR*	MBX-2	18	19.3	9.8	77.0	Thru-Hole	RALEIGH WATER METER	13.5



IMBX1RPICK
MBX-1 Style Meter Box with
Solid Water Meter Lid



IMBX2WM
MBX-2 Style Meter Box with
Thru-Hole Water Meter Lid



IMBX2CRTR*
Raleigh Meter Box Assembly
MBX-2 Style Meter Box Assembly with
Custom City of Raleigh Water Meter Lid

Cast Iron Water Meter Boxes

Cast Iron Water Meter Boxes - GREMBX

PART #	STYLE	HEIGHT	LENGTH	WIDTH	WEIGHT
GREMBX1	MBX-1	12	20.3	10.6	42.3
GREMBX2CRV	MBX-2	18	19.3	9.8	77.0



GREMBX1
MBX-1 Style 12" Meter Box

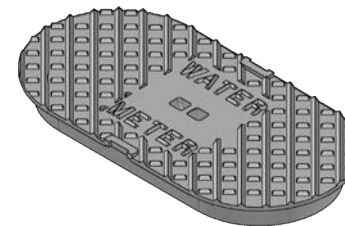


GREMBX2CRV
MBX-2 Style 18" Meter Box

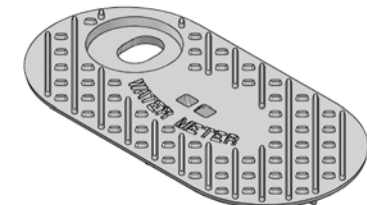
Cast Iron Water Meter Lids

- Lids include pick holes for easy installation and removal
- Choose between solid or recessed thru-hole (AMR/AMI) styles
- Standard lid lettering is "WATER METER". Custom lid lettering available.
- Lid design meets ADA (American Disabilities Act) requirements

PART #	STYLE	LETTERING	WEIGHT
CULMLROMEPICK	Solid	WATER METER	18
GREMBXWM	Thru-Hole	WATER METER	13.5



CULMLROMEPICK
Solid Water Meter Lid with
Pick Holes



GREMBXWM
Water Meter Lid with
Thru-Hole and Pick Holes

NOTES:



BINGHAM & TAYLOR

Proudly Made in the USA

SECURITY & SAFETY

All measurements in tables are in inches or pounds unless indicated otherwise.

VALVE SENTINELS

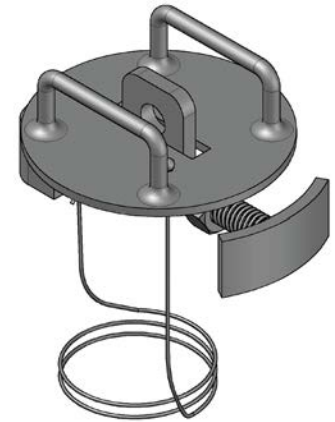
Carbon Steel Valve Sentinels - BGB

- Robust protection from unauthorized access, theft, tampering
- Easy lock-out/tag-out protection for utilities and municipalities
- Compatible with all valve boxes
- Made from high-strength carbon steel
- An assembled unit includes expander bar and plate attached with a lanyard. Also available as individual pieces.
- Plates available in yellow, blue, or red

TO ORDER BGB - SPECIFY: Part Series, Color

Sentinel Assemblies

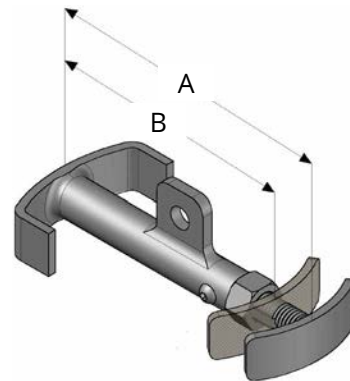
ASSEMBLED SENTINEL	EXPANDER BAR	PLATE	LANYARD	COLOR
BGBA04.25Lx	4¼	3¾	Yes	Blue (B) or Yellow (Y)
BGBA04.88Lx	4⅞	4¾	Yes	Blue or Yellow
BGBA05.63Lx	5⅝	4⅞	Yes	Blue or Yellow
BGBA06.50Lx	6½	5½	Yes	Blue, Yellow, or Red (R)



BGBA (Assembly)

Sentinel Expander Bars

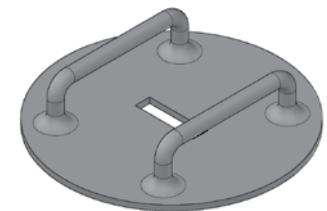
EXPANDER BAR	INNER DIAMETER	
	MAX DIM. A	MIN DIM. B
BGBEXP-04.25	4 ¼	3 ⅞
BGBEXP-04.88	4 ⅞	4 ¼
BGBEXP-05.63	5 ⅝	4 ⅞
BGBEXP-06.50	6 ½	5 ⅝
BGBEXP-07.50	7 ½	6 ½
BGBEXP-08.75	8 ¾	7 ½
BGBEXP-10.50	10 ½	8 ¾
BGBEXP-12.75	12 ¾	10 ½



BGBEXP

Sentinel Plates

PLATE	PLATE DIAMETER
BGBPLATE-03.75x	3¾
BGBPLATE-04.38x	4¾
BGBPLATE-04.88x	4⅞
BGBPLATE-05.50x	5½
BGBPLATE-06.50x	6½
BGBPLATE-07.75x	7¾
BGBPLATE-08.50x	8½
BGBPLATE-10.75x	10¾
BGBPLATE-11.50x	11½



BGBPLATE

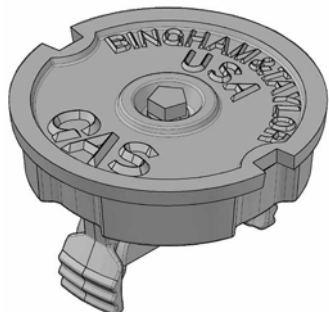
LOCKING LIDS

Cast Iron Locking Lids for 5¼" Valve Boxes

Universal Locking Lid

- Legs provide positive locking mechanism against side of the valve box
- Tamper resistant
- Minimizes lid ejections
- Gas, Sewer, or Water lid lettering options.

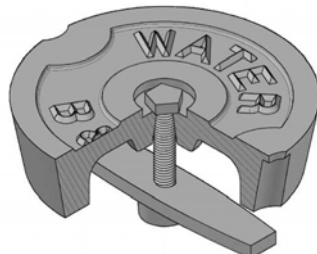
PART #	LID LETTERING
I5LBGPSEL	GAS
I5LBSULB	SEWER
I5LBWULB	WATER



Phoenix Locking Lid - LBPH

- Available for 7" shaft diameters
- Locking bar secures lid against the underside of rim
- Tamper resistant
- Minimizes lid ejections
- Monument, Sewer, Survey, or Water lid lettering options

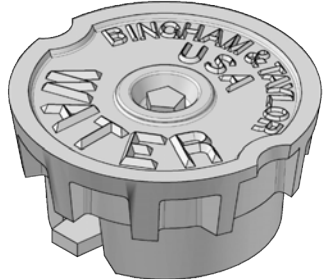
PART #	LID LETTERING
I8BPHMONL	MONUMENT
I8BPHSL	SEWER
I8BPHSURL	SURVEY
I8BSHWL	WATER



Locking Lid for Screw-Type Top Sections

- Locking bar secures lid against the underside of rim
- Tamper resistant
- Minimizes lid ejections
- Gas, Sewer, or Water lid lettering options

PART #	LID LETTERING
I5LBGLTYB	GAS
I5LBSLTYB	SEWER
I5LBWLTBYB	WATER



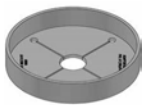
Stabilizers - ADP

- Minimizes settling and shifting of the valve box or meter pit
- Centers valve box over operating nut
- Helps prevent backfill from entering box
- Protects the epoxy coating of the valve
- Multi-Fit adapters have elongated slots to accommodate numerous valve types
- Multi-Fit adapters available in many sizes

PART SERIES	ADAPTER TYPE	DIAMETER	CENTER HOLE DIAMETER	FITS
ADP-CSA	Curb Stop	6.75	N/A	Bison 001 Bottom Sizes available for standard cast iron 2½" curb boxes and CUL2BA14E enlarged base
ADP-MF	Multi-Fit	6.75-10.3	1.0-3.25	5¼ VB Bottom Sections, 8" PVC, C-900/C-905, Bison 101 & 106 Bottom
ADP-VBII	VBA II	7.75	N/A	5¼ VB Bottom Sections
ADP-6	#6 Base/107	18.0-18.9	2.0-3.25	#6 Base/107
ADP-MP	Meter Pit	17.5-23.5	3.25	18, 20 and 24 Injection Molded Meter Pit



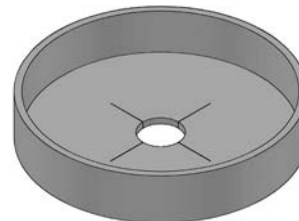
ADP-CSA
Curb Stop



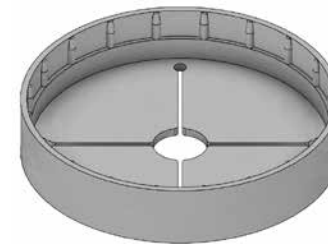
ADP-MF
Multi-Fit



ADP-VBII
VBA II



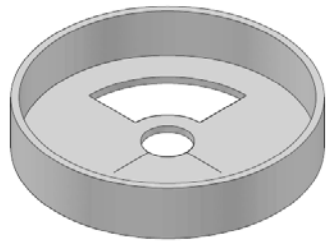
ADP-6
#6 Base/107



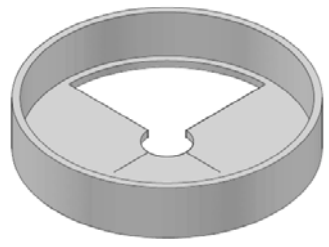
ADP-MP
Meter Pit Stabilizer

Stabilizers (cont.) - ADP

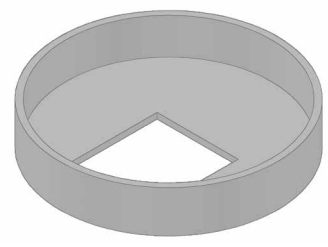
PART #	TYPE	FITS	DIAMETER	CENTER HOLE DIAMETER
ADP4001002P	Multi-Fit	5½" Valve Box Bottom Sections (8 O.D.), Poly Valve	9.9	3.25
ADP5001002S	Multi-Fit	5½" Valve Box Bottom Sections (8 O.D.), Steel Valve	9.9	2.00
ADP4001006P	#6 Base	#6 Base with Poly Valve or 107 Bison Bottom Section or P12B & P15B Valve Boxes	18.0	3.25
ADP5001006S	#6 Base	#6 Base with Steel Valve or 107 Bison Bottom Section or P12B & P15B Valve Boxes	18.0	2.00
ADP4001006PGB	#6 Base	#6 Base with Geared Broan Valve or P12B & P15B Valve Boxes	18.0	3.25
ADP4001006PGC	#6 Base	#6 Base with Geared Cameron Valve or P12B & P15B Valve Boxes	18.0	3.25
ADP4001006PGK	#6 Base	#6 Base with Geared Kerotest Valve or P12B & P15B Valve Boxes	17.8	N/A



ADP4001006PGB
#6 Base
Fits Geared Broan Valve



ADP4001006PGC
#6 Base
Fits Geared Cameron Valve



ADP4001006PGK
#6 Base
Fits with Geared Kerotest Valve

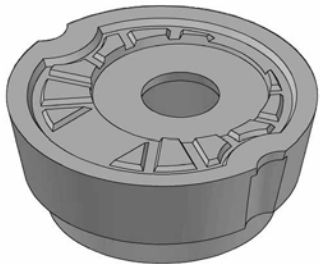
LEAK DETECTION

Leak Detection Lids & Inserts for 5¼" Valve Boxes with AMR/AMI Capability

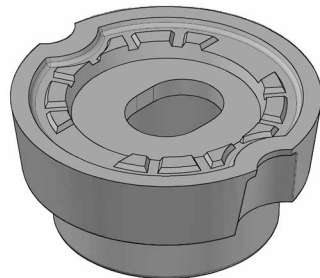
Our leak detection lids are designed to work seamlessly with leak detection sensors, ensuring accurate readings and clear signal transmission. We offer two types of leak detection lids. Custom lettering and sizes available.

Cast Iron Lid with Thru-Hole

This lid features a thru-hole that allows the leak detection sensor to transmit signals directly, ensuring strong and reliable communication for accurate leak monitoring.



CUL5LRDAMI
5¼" Lid with
Circular Recessed
Thru-Hole



CUL5LMXU
5¼" Lid with
Oblong Recessed
Thru-Hole

Cast Iron Lid Ring with Composite Plastic Insert and Insert Retainer

A cast iron lid ring with durable plastic insert, provides a protective housing for antennas and leak detection sensors. The cast iron outer ring resists dislodging, offering stability, while the plastic insert allows for clear signal transmission, and shielding from environmental elements.



PLDIA5.25
Leak Detection
Insert with
Plastic Leak
Detection Insert
Retainer
(Blue plus
screws)

CUL5LRPI
5¼" Lid Ring for
use with Leak
Detection Insert
(Dark gray)

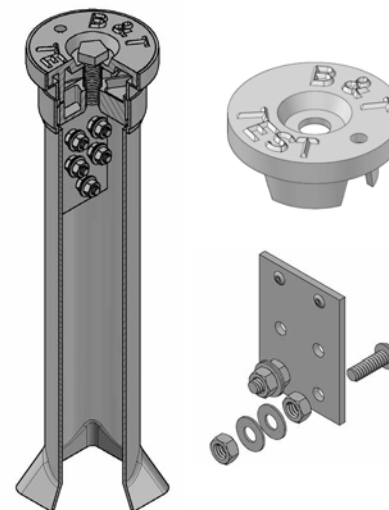
2½" CATHODIC PROTECTION

Standard Plastic Buffalo-Style 2½" Cathodic Protection Test Boxes with CNG-Style Cast Iron Rim - P2BCNG/P2B202CNG

Our standard plastic cathodic protection test boxes are made of ABS plastic combined with a cast iron rim with pentabolt locking lid. The inclusion of a cast iron rim makes locating the box easier. Can be used as a terminal test stations. Does not require removal of lid to take reading.

- Available with or without 10' coiled tracer wire. Permanent magnet installed for locating purposes.
- Heavy-duty rims available for roadway installation
- Cast iron or plastic lids available. Custom lettering on lids as well as color options available
- Bottom is flared circular or squared to prevent pull out and or settling of the box
- Terminal jumpers available
- Pentabolt hand keys and combination keys available for opening locking lids or lifting Drop-in lids.

PART SERIES	ACTUAL SHAFT DIAMETER	LID DIAMETER	NUMBER OF TERMINALS	APPROX. WEIGHT
P2B202CNG	2.4	3.5	0-5	2



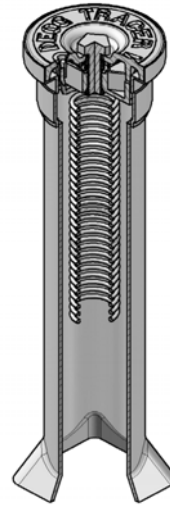
P2B202CNG

2½" Light Duty CP Test Box
with CNG Cast Iron Rim
Exploded Detail

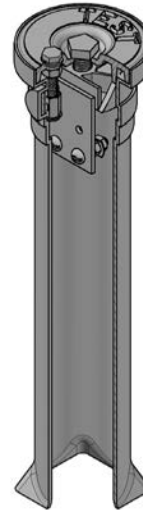
2½" CATHODIC PROTECTION

Standard Plastic Buffalo-Style 2½" Cathodic Protection Test Boxes with CNG-Style Cast Iron Rim - P2BCNG/P2B202CNG

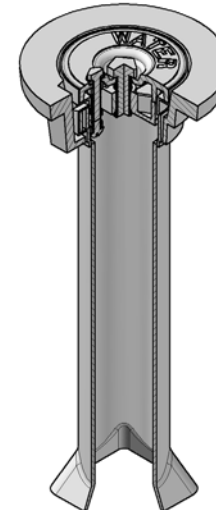
PART SERIES	TOP	BOTTOM	EXT
P2BCNG	15	-	-
	18	-	-
	15	15	18-27
P2B202CNG	15	-	-
	18	-	-
	10	15	18-23
	15	15	18-27



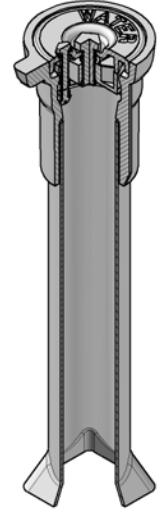
P2BCNGTRC
With 10' Coiled
Tracer Wire



P2B202CNG
Light Duty



P2B202CNGLGE
Concrete Installs



P2B202CNGHVY
Asphalt Installs

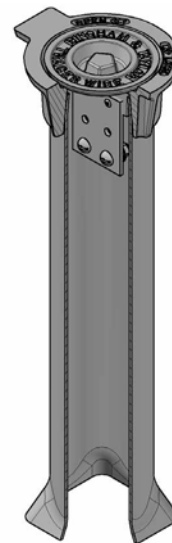
2½" CATHODIC PROTECTION

Standard Plastic 2½" Cathodic Protection Test Boxes with NFG-Style Cast Iron Rim - P2B200NFG

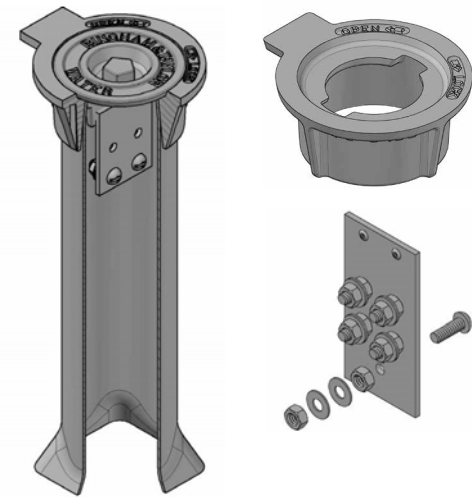
- Plastic test box comes with cast iron rim with Drop-turn locking lid, which is key to locating the box
- This box can also be used as a tracer wire or locating box for polyethylene pipe
- Provides direct connection to tracer wire
- 0-5 terminals available
- Choose desired length. Adjustable, separate (telescoping) top and bottom sections available
- Cast iron or plastic lids available. Custom lettering on lids as well as color options available
- Bottom is flared circular or squared to prevent pull out and or settling of the box
- Terminal jumpers available
- Pentabolt hand keys and combination keys available for opening locking lids or lifting Drop-in lids.

PART SERIES	ACTUAL SHAFT DIAMETER	LID DIAMETER	NUMBER OF TERMINALS	APPROX WEIGHT
P2B200NFG	2.7	3.3	0-5	3

TOP	BOTTOM	EXT
12	-	-
15	-	-
18	-	-
24	-	-
36	-	-
12	12	14-21
12	18	20-27
18	24	26-39
26	36	38-59



P2B200NFG
2½" CP Test Box with
NFG Style Cast Iron Rim



P2B200NFG
2½" CP Test Box
with NFG Style Cast Iron Rim
Exploded Detail

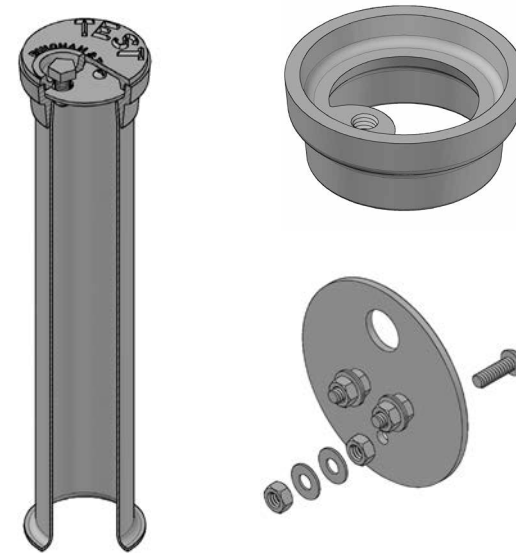
2½" CATHODIC PROTECTION

Standard Plastic 2½" Cathodic Protection Test Boxes with P200-Style Cast Iron Rim - P2B200

- Plastic test box comes with cast iron rim & pentabolt locking lid, which is key to locating the box
- This box can also be used as a tracer wire or locating box for polyethylene pipe
- 0-3 terminals available
- Choose desired length. Adjustable, separate (telescoping) top and bottom sections available
- Cast iron or plastic lids available. Custom lettering on lids as well as color options available
- Bottom is flared circular or squared to prevent pull out and or settling of the box
- Terminal jumpers available
- Pentabolt hand keys and combination keys available for opening locking lids or lifting Drop-in lids.

PART SERIES	ACTUAL SHAFT DIAMETER	LID DIAMETER	NUMBER OF TERMINALS	APPROX WEIGHT
P2B200	2.5	4.2	0-3	3

TOP	BOTTOM	EXT
18	-	-
24	-	-



P2B200

2½" CP Test Box with P200 Style Cast Iron Rim
Exploded Detail

4" CATHODIC PROTECTION

Standard Plastic 4" Cathodic Protection Test Boxes - P4B

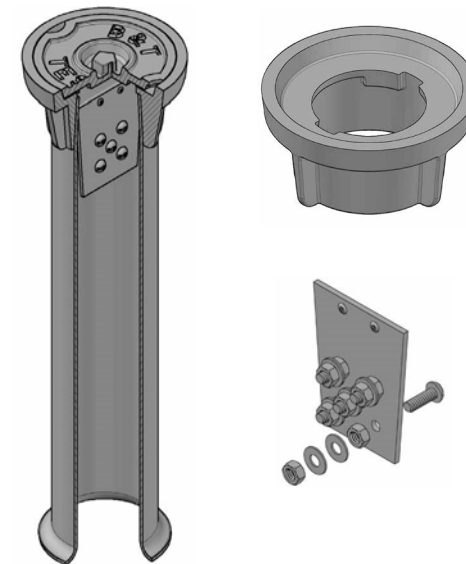
- Plastic test box comes with cast iron rim with Drop-in or Drop-turn locking lid, which is key to locating the box
- 0-7 terminals available
- Choose desired length. Adjustable, separate (telescoping) top and bottom sections available
- Custom lettering on lids as well as color options available
- Bottom is flared to prevent pull out and or settling of the box
- Terminal jumpers available
- Pentabolt hand keys and combination keys available for opening locking lids or lifting Drop-in lids.

PART SERIES	ACTUAL SHAFT DIAMETER	LID DIAMETER	NUMBER OF TERMINALS	APPROX. WEIGHT
P4B334DT	3.3	4.7	0-7	6
P4B445DT	4.1	4.8	0-5	8
P4B106	4.1	4.7	N/A	15
P4BHWL	4.0	5.1	0-5	7
P4BHHD	4.0	5.1	0-5	14

P4B334DT

- Comes with a cast iron Drop-turn locking lid
- Choose between 12" or 18" lengths or 18" by 18" telescoping box with separate top and bottom sections

TOP	BOTTOM	EXT
12	-	-
18	-	-
18	18	20-33



P4B334DT

4" CP Test Box with 334DT Style Cast Iron Rim
Exploded Detail

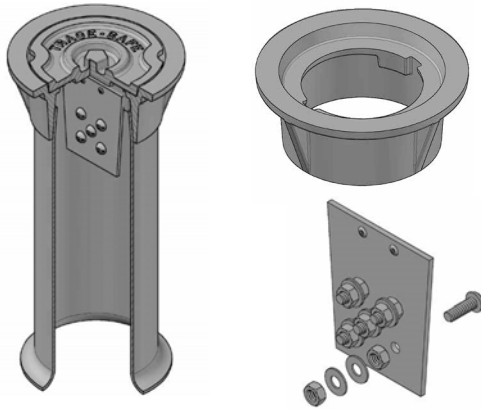
4" CATHODIC PROTECTION

Standard Plastic 4" Cathodic Protection Test Boxes - P4B

P4B445DT

- Comes with a cast iron Drop-turn locking lid
- Choose from 12", 18", 24" or 36" lengths or 18" by 18", 24" by 24" or 36" by 36" telescoping box with separate top and bottom sections

TOP	BOTTOM	EXT
12	-	-
18	-	-
24	-	-
36	-	-
18	18	20-33
24	24	27-45
36	36	39-69



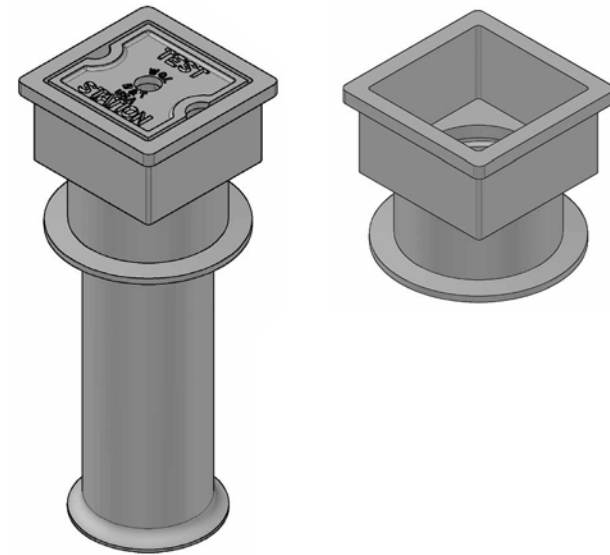
P4B445DT

4" CP Test Box with 445DT Style Cast Iron Rim
Exploded Detail

P4B106

- Comes with a square cast iron Drop-in lid
- Available in 18" length

TOP	BOTTOM	EXT
18	-	-



P4B106

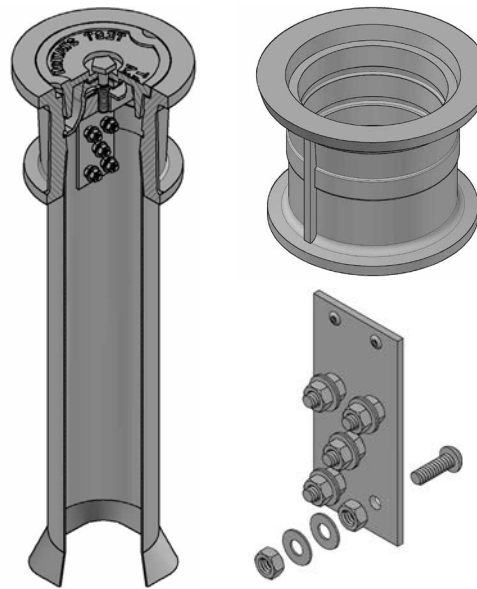
4" CP Test Box
with Square Cast Iron Rim

4" CATHODIC PROTECTION

Standard Plastic 4" Cathodic Protection Test Boxes - P4B

P4BHHD

- Comes with a heavy-duty cast iron rim with Drop-in locking lid that exceeds ASTM A-48 Class 30.
- H2O load rated, suitable for highway use and FAA runway load tested
- 0-7 terminals available
- Choose from 18", 24" or 36" lengths
- Custom lettering on lids as well as color options available
- Bottom is flared to prevent pull out and or settling of the box
- Paving risers available in 1" - 6" heights
- Terminal jumpers available
- Pentabolt hand keys and combination keys available for opening locking lids or lifting Drop-in lids.



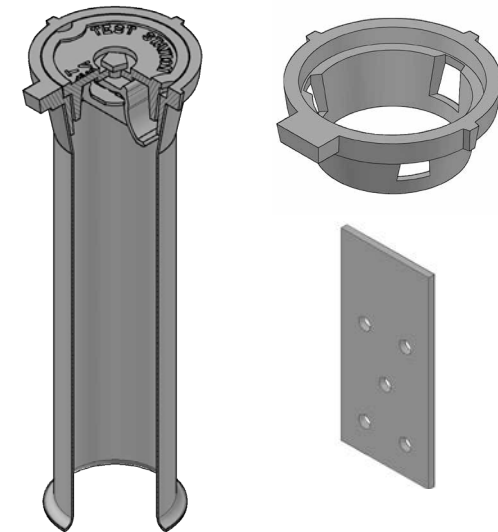
P4BHHD

4" CP Test Box with Heavy-Duty Cast Iron Rim
Exploded Detail

P4BHWL

- Comes with a cast iron, Drop-in locking lid with center bolt
- Available in 18" length

TOP	BOTTOM	EXT
18	-	-



P4BHWL

4" CP Test Box with Heavy-Duty Cast Iron Rim
Exploded Detail

TOP	BOTTOM	EXT
18	-	-
24	-	-
36	-	-
48	-	-

5¹/₄" CATHODIC PROTECTION

Standard Plastic 5¹/₄" Cathodic Protection Test Boxes - P5B

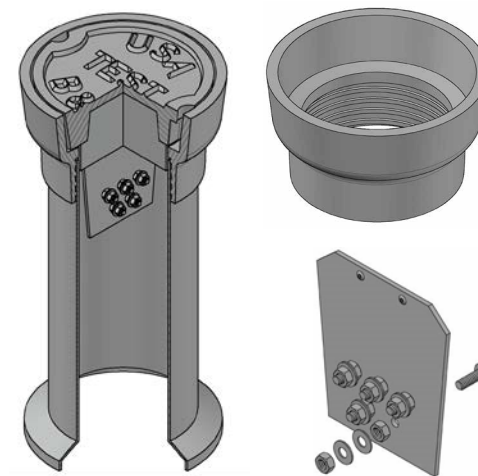
- Plastic test box with a heavy-duty cast iron rim with either Drop-in or Drop-in locking lid that exceeds ASTM A-48 Class 30.
- H20 load rated, suitable for highway use and FAA runway load tested
- 0-7 terminals available
- Choose desired length. Adjustable, separate (telescoping) top and bottom sections available
- Custom lettering on lids as well as color options available
- Bottom is flared to prevent pull out and or settling of the box
- Paving risers available in 1" - 6" heights
- Terminal jumpers and shunts available
- Pentabolt hand keys and combination keys available for opening locking lids or lifting Drop-in lids.

P5B525

- Heavy-duty cast iron rim with Drop-in lid
- Available in 18" length

TOP	BOTTOM	EXT
18	-	-

PART SERIES	ACTUAL SHAFT DIAMETER	LID DIAMETER	NUMBER OF TERMINALS	APPROX. WEIGHT
P5B525	5.9	7.4	0-8	26
P5BNM5	5.1	5.9	0-10	15
P5B668DT	5.9	6.4	0-7	23



P5B525

5¹/₄" CP Test Box with Heavy-Duty P500 Cast Iron Rim
Exploded Detail

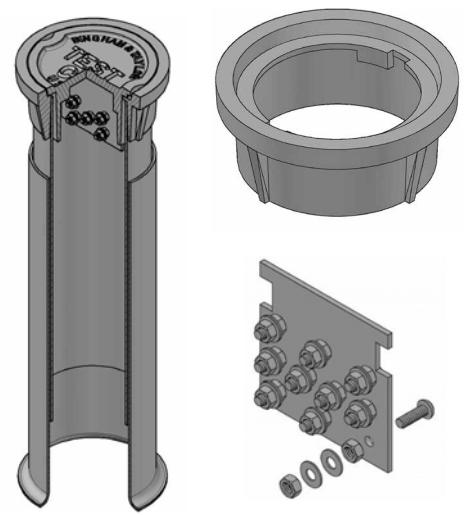
5 1/4" CATHODIC PROTECTION

Standard Plastic 5 1/4" Cathodic Protection Test Boxes - P5B

P5BNM5

- Heavy-duty cast iron rim with either Drop-turn or Drop-in lid
- Terminal box or block hooks underneath the lid
- Choose from 18" or 24" lengths or 18" by 18" telescoping box with separate top and bottom sections

TOP	BOTTOM	EXT
18	-	-
24	-	-
18	18	21-33



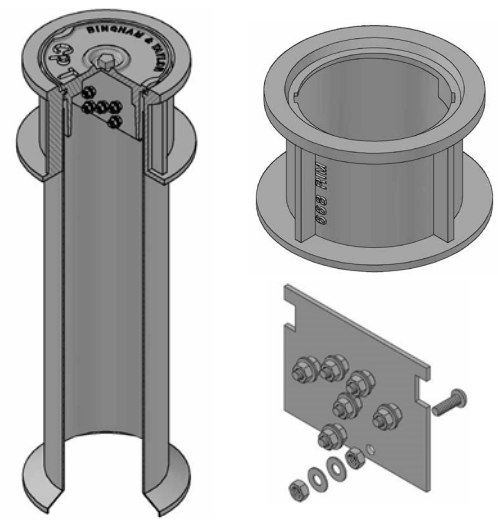
P5BNM5

5 1/4" CP Test Box with Heavy-Duty NM5 Cast Iron Rim
Exploded Detail

P5B668DT

- Heavy-duty cast iron rim with Drop-turn locking lid
- Terminal box or block hooks underneath the lid
- Choose from 18" or 24" lengths or 24" by 24" telescoping box with separate top and bottom sections

TOP	BOTTOM	EXT
18	-	-
24	-	-
24	24	30-46



P5B668DT

5 1/4" CP Test Box with Heavy-Duty 668DT Cast Iron Rim
Exploded Detail

LINE MARKERS

Line Markers - CTCUL

- High visibility: various colors and lengths available
- Marker and test station combinations available
- Strong and maintenance free
- Superior UV stabilizing
- Customized silk screen lettering available
- Customer to provide graphics and lettering for marker
- Available in 60", 66", 72", 78", 84", 90", 96" lengths
- Available colors: Yellow, Blue, White, Green, Orange, Red, Black

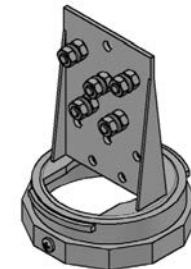
TYPE	PART SERIES	DESCRIPTION	DIMENSION
Round Markers	503 LM0	Sleeve Only	3.3 Diameter
	503 LM1	Domed Cap	
	503 LM2	Flat Cap	
	533	Test station, Bison Cap	
	713	Test station, Domed Cap	



503 LM0

503 LM1

503 LM2

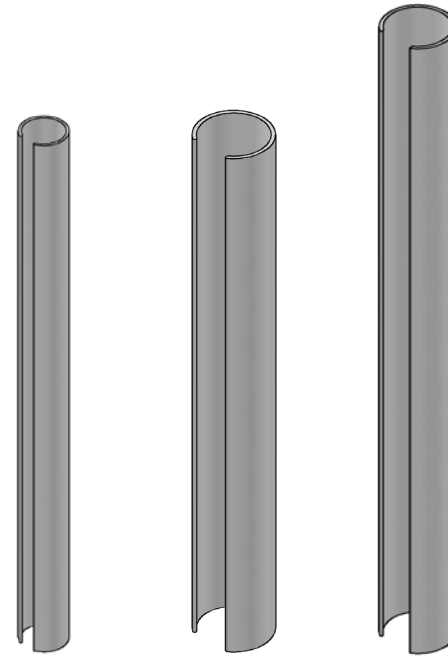
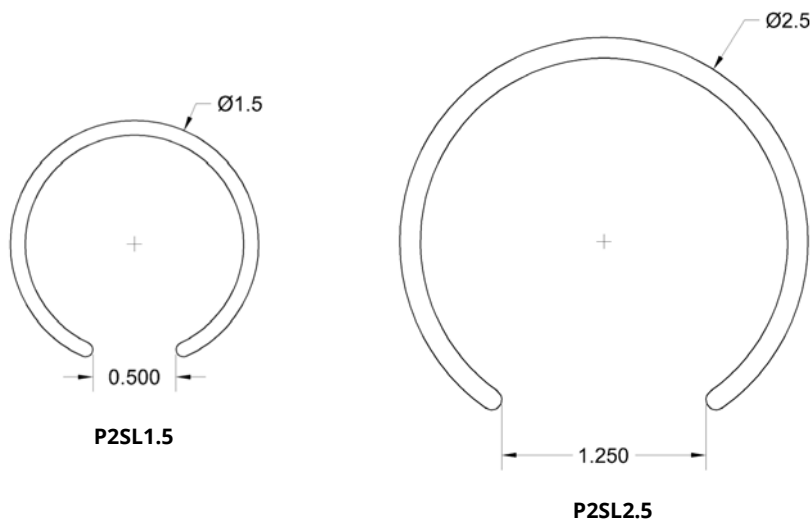


533

PROTECTION SLEEVES

Protection Sleeves - P2SL

- Helps prevent damage to service lines during backfill or dig-in
- Redistributes loads, reducing stress on pipelines
- Manufactured with high-strength, impact-resistant PVC material
- Provides long-term corrosion protection
- Available in gray or yellow



PART SERIES	DIAMETER	LENGTH
P2SL1.5	1 1/2	18
		30
		60
P2SL2.5	2 1/2	18
		24
		30
		60



BINGHAM & TAYLOR

Proudly Made in the USA

TOOLS & ACCESSORIES

*All measurements in tables are in **inches** or **pounds** unless indicated otherwise.*

Lid Lifters - ETD

The Lid Lifter provides the leverage and strength to remove even the most stubborn and heavy utility lids. Its patented design is engineered to grip and hold even the heaviest lids, providing a secure solution for lifting, carrying, and installing. Durable and versatile, yet lightweight, it is ideal for fieldwork. The Lid Lifter is a must-have for every truck, ensuring your team can tackle every job with ease.

Safer, Easier Access Solution

The Lid Lifter's ergonomic design reduces the physical effort required, saving wear and tear on workers' backs, shoulders, and arms, decreasing the likelihood of workplace injuries and chronic pain. The tool's efficient leverage system means that even the heaviest lids can be lifted with minimal force, reducing fatigue and improving overall job performance. Gone are the days of using a screwdriver to attempt to remove stubborn, stuck lids. Lid should be loosened prior to Lid Lifter use.

Flexible & Convenient

Providing enhanced versatility, the adjustable handle Lid Lifter allows for use with multiple lid sizes, eliminating the need for multiple tools. The 25" extension handle enables workers to install or remove lids without bending over, reducing stress on their backs.

Adaptable to Any Shaped Lid

With its built-in hook, the Lid Lifter is designed to handle not just round lids but also rectangle and other shaped lids. It's a versatile solution for all your utility access needs.

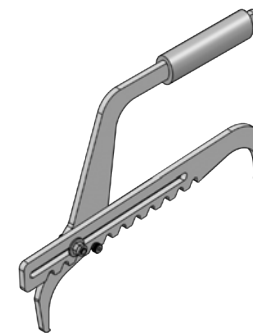
PART #	DESCRIPTION	COLOR
ETD4LL	4" Valve Box Lids	Yellow
ETD5LLG2	5¼" Valve Box Lids	
ETDUVCL	Adjustable 5¼ - 12½" Lids	
ETD325	25" Extension T-Handle	



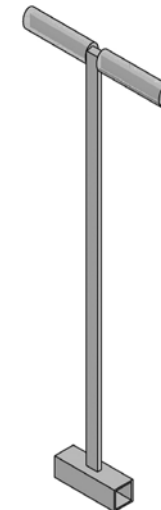
ETD4LL
4" Lid Lifter



ETD5LLG2
5¼" Lid Lifter



ETDUVCL
Adjustable 5¼"-12½"



ETD325
25" Extension Handle

TOOLS & ACCESSORIES

Pentabolt Wrench/Hand Keys

New Style Pentabolt Keys/Wrenches - BTTPTAK

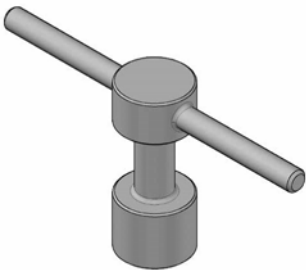
- Fits all AWWA #1 & #2 pentabolts
- Engineered to allow user to both lock/unlock pentabolt AND lift all Bingham & Taylor Maverick meter lids with pentahead insert
- Pry-bar edge for lifting and cleaning sod and debris away from access lid
- Ergonomically designed for user comfort



BTTPTAK
New Style Pentabolt Key/Wrench

Standard 3" Pentabolt Key (Wrench) - BTT020006

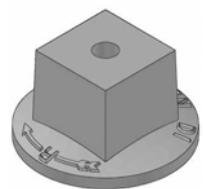
- Fits all AWWA #1 pentabolts



BTT020006
Standard 3" Pentabolt Key/Wrench

Replacement 2" Operating Nut - BTTALM

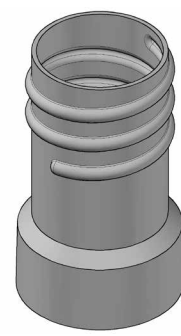
PART #	FITS	WEIGHT
BTTALM4HOPN8R34	3/4" Stem (4" Ductile Iron)	2
BTTALM6HOPN8R78	7/8" Stem (6" Ductile Iron)	2
BTTALM8HOPN8R1	1" Stem (8" Ductile Iron)	2
BTTALM12HOPN8R14	1 1/4" Stem (12" Ductile Iron)	2



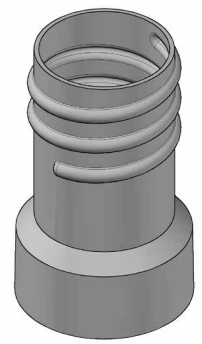
BTTALM
Replacement Operating Nut

Standard Plastic Adjustable Valve Box Adapter Top Hat - P05A

- Fits 6" PVC and 6" C-900 pipe
- Lightweight and easy to install
- Standard-thickness ABS plastic
- Reduces the need to cut pipe to exact heights
- Allows for minor adjustments



P05A6625
Fits 6" PVC



P05A6900
Fits 6" C-900 Pipe

Bingham & Taylor's Commitment to Our Customers

The Bingham & Taylor family of employees is dedicated to providing you, our customers, with the highest quality products, support and service to successfully satisfy your requirements. Our service is fast and dependable, our prices are competitive and reasonable. We have been in continuous business since 1849 serving water and gas industries. We are proud to be committed and active members of the broader community as an Associate and Founding member of the American Water Works Association (AWWA) since 1882, a member of the Water and Wastewater Equipment Manufacturers Association, Inc. (WWEMA) since 1908, and an Associate and Founding member of the American Gas Association (AGA) since 1918.

Bingham & Taylor Corp. Limited Warranty

Effective July 1, 2021

Subject to the terms and conditions of this Limited Warranty, Bingham & Taylor Corp. ("Bingham & Taylor") warrants to the buyer that the Bingham & Taylor products listed below shall be free from defects in materials and workmanship, under normal conditions of use when sold as part of a Bingham & Taylor meter or valve access system.

Unless otherwise specified, this Limited Warranty for the applicable Bingham & Taylor products listed below shall begin on the date the product is sold to the buyer ("Commencement Date") and will expire after the following number of years:

- (a) Fifty (50) years for Bingham & Taylor cast iron and plastic valve boxes, lids, extensions, and bases when all are sold and used in combination with other Bingham & Taylor components;
- (b) Five (5) years for Bingham & Taylor injection molded meter pits and meter lids when all are sold and used in combination with other Bingham & Taylor components;
- (c) One (1) year for Bingham & Taylor cast iron, plastic, and injection molded products when sold or used in combination with non-Bingham & Taylor components;
- (d) One (1) year for any other Bingham & Taylor product not covered in (a) – (c) above.

Exclusions from Limited Warranty:

This limited warranty applies only if the applicable Bingham & Taylor products identified above:

- (a) are selected, configured and sold by a certified reseller recognized by Bingham & Taylor;
- (b) remain in their originally sold location;
- (c) are used only for the purpose of providing access to underground utilities;
- (d) are not misused, tampered with, mishandled, neglected, or accidentally damaged;
- (e) are not modified or repaired without the prior written approval of Bingham & Taylor;
- (f) are sold and used in accordance with applicable laws, rules, regulations and code requirements.

Without limiting the foregoing exclusions, this limited warranty does not apply if the product failure or resulting damage is caused by:

- (a) faulty installation;
- (b) components not manufactured or sold by Bingham & Taylor;
- (c) external physical or chemical conditions;
- (d) any abnormal operating conditions; or
- (e) damages incurred through secondary construction activities, roadwork, repaving, or excavation.

This limited warranty is not transferable by the buyer of the applicable Bingham & Taylor product.

Warranty Claim Process:

If the buyer of a Bingham & Taylor product which is subject to the limited warranty desires to make a breach of warranty claim, the buyer must provide written notification describing the alleged failure or defect to Bingham & Taylor, Attn: Warranty Department, 601 Nalle Place, Culpeper, VA 22701, within thirty (30) days after detection of the alleged failure or defect occurring within the applicable warranty period. The failure to give such written notice during such time voids the limited warranty with respect to such claim. All products alleged to have failed or to be defective must be sent to Bingham & Taylor for inspection and testing for determination of the cause of the alleged failure or defect.

Exclusive Remedies:

If Bingham & Taylor determines that a product which is subject to the limited warranty has failed or is defective within the applicable warranty period, Bingham & Taylor's liability is limited, at the option of Bingham & Taylor, to: issuing a refund of the purchase price paid by the buyer for the defective product or to repairing or replacing the defective product. BINGHAM & TAYLOR SHALL NOT HAVE ANY RESPONSIBILITY FOR LOSSES, EXPENSES OR SPECIAL, INDIRECT, SECONDARY, INCIDENTAL OR CONSEQUENTIAL DAMAGES ARISING OR RESULTING FROM ANY FAILURE OR DEFECT IN ANY PRODUCT SUBJECT TO THE LIMITED WARRANTY.

Warranty Claim Dispute Process:

In the event claimant and Bingham & Taylor are unable to resolve a claim through informal means, the parties shall submit the dispute to the American Arbitration Association or its successor (the "Association") for arbitration under its Commercial Arbitration Rules, and any arbitration proceeding shall be conducted before a single arbitrator in Culpeper, Virginia. NOTWITHSTANDING THE FOREGOING, NEITHER THE CLAIMANT NOR BINGHAM & TAYLOR CORP. SHALL BE ENTITLED TO ARBITRATE ANY CLAIMS AS A REPRESENTATIVE OR MEMBER OF A CLASS, AND NEITHER THE CLAIMANT NOR BINGHAM & TAYLOR SHALL BE ENTITLED TO JOIN OR CONSOLIDATE CLAIMS WITH ANY OTHER PARTIES IN ARBITRATION OR IN LITIGATION BY CLASS ACTION OR OTHERWISE.

Miscellaneous:

This limited warranty and any claims arising from breach of contract, breach of warranty, tort, or any other claim arising from the sale or use of Bingham & Taylor's products shall be governed and construed under the laws of the State of Virginia. Bingham & Taylor sales representatives, distributors, and contracting professionals have no express or implied authority to bind Bingham & Taylor to any agreement or warranty of any kind without the prior written consent of Bingham & Taylor.

No Other Warranty

THIS LIMITED WARRANTY IS THE FULL EXTENT OF THE WARRANTY PROVIDED BY BINGHAM & TAYLOR. BINGHAM & TAYLOR HEREBY DISCLAIMS ANY OTHER EXPRESS OR IMPLIED WARRANTIES, INCLUDING, WITHOUT LIMITATION, THE IMPLIED WARRANTIES OF MERCHANTABILITY AND FITNESS FOR A PARTICULAR PURPOSE.

Shipping Terms:

All shipments are made F.O.B. Shipping Point

THE BINGHAM & TAYLOR DIFFERENCE

Bingham & Taylor offers the most diverse product line in our industry, with a steadfast commitment to timely service, unmatched quality, and support from a knowledgeable, dedicated team.

Founded on collaboration, innovation, integrity, and excellence, we're proud of our history as industry leaders. By truly listening to our customers, we've pioneered new approaches at every step, moving the industry forward with each advancement.

At Bingham & Taylor, we believe that standing still is not an option— together with our customers, we're always moving forward.

VISIT US ON THE WEB

www.bandt-us.com

FOR QUOTES OR QUESTIONS

customerservice@bandt-us.com

(540) 825-8334, Opt. 2

TO PLACE AN ORDER

orders@bandt-us.com

SALES HEADQUARTERS

14115 Lovers LN, Culpeper, VA 22701, USA



WOMEN
OWNED

