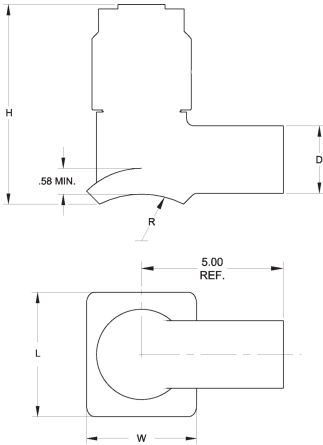




**SADDLE FITTINGS: High Volume Tapping Tee with Square Base**  
**PE2708**  
**2" IPS 1.88/Steel**

- Approval: ASTM D2513
- Approval: ASTM D3261
- Approval: CSA B137.4

Please call for more information on pricing, availability, other sizes and dimensions.



Main Size (inch)	GF weight Code	(lb)	H (inch)	W (inch)	D (inch)	L (inch)	Box Qty
2	360 001 650	3.4	6.56	3.88	2.37	4.38	10

The technical data are not binding. They neither constitute expressly warranted characteristics nor guaranteed properties nor a guaranteed durability. They are subject to modification. Our General Terms of Sale apply.

Georg Fischer Piping Systems Ltd, Postfach, CH-8201 Schaffhausen/Switzerland

Phone +41 -(0)52-631 1111

e-mail: [info.ps@georgfischer.com](mailto:info.ps@georgfischer.com)

Internet: <http://www.gfps.com>