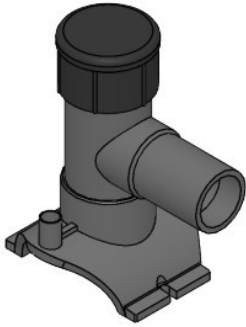
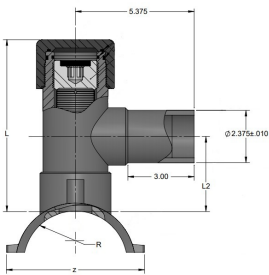


ELECTROFUSION HIGH VOLUME TAPPING TEES with 1.8LTC STEEL CUTTER: PE2708, IPS x 2" IPS Butt Outlet, DR11, 4.7R Pin Under Clamp



- Pin Type: 4.7R (4.7 Pin with Resistor)
- Cutter Size Material: 1.8LTC (Low Torque Cutter)/Steel
- Meets ASTM D2513
- Approval: ASTM F1055
- Meets ASTM D3261
- Certified to CSA B137.4.1

Main Size (inch)	Code	weight (lb)	R (inch)	z (inch)	L (inch)	L2 (inch)	Box Qty
3	360 003 444	2.9	1.75	4.60	6.66	3.50	10
4	360 002 881	3.0	2.25	6.26	7.27	3.50	8
6	360 001 039	1.1	3.31	8.68	8.43	3.50	5



The technical data are not binding. They neither constitute expressly warranted characteristics nor guaranteed properties nor a guaranteed durability. They are subject to modification. Our General Terms of Sale apply.

Georg Fischer Piping Systems Ltd, Postfach, CH-8201 Schaffhausen/Switzerland Phone +41 -(0)52-631 1111 e-mail: info.ps@georgfischer.com Internet: <http://www.gfps.com>