



PLUNGER BARS

Heath provides the utility industry with the most rugged and reliable tool you can find for all your underground probing needs. Heath Plunger Bars are specially designed to outperform all others. Heath Plunger Bars have a fitted piston rod for maximum safety and dependability, as well as a unique piston action for easy removal of the rod.

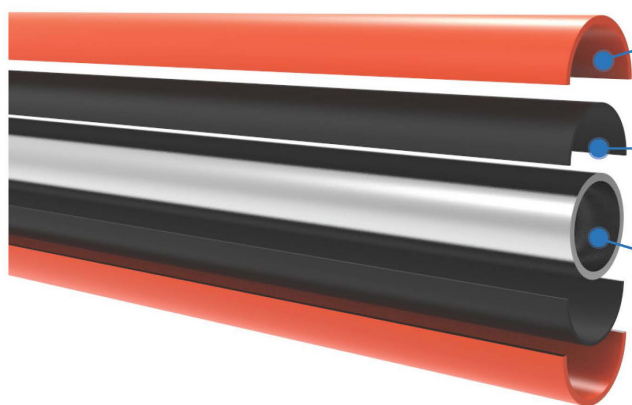
Ideal for all applications:

- ➔ Test holes - probe gas leaks
- ➔ Use for preliminary pinpointing
- ➔ Locate underground structures
- ➔ Sub-soil determination - tracing ledge, etc.
- ➔ Tree feeding - directly fertilize roots

Features:

- ➔ Tough, one-man probing tools that easily drive 1/2-in. holes to depths of up to 40 inches.
- ➔ Two models: Heavy Duty or Utility
- ➔ Plastic-coated handles are insulated and provides up to 10,000 volts shock resistance at the top 18" of handle. Laboratory tested.
- ➔ Tempered steel rods come in two sizes:
40" probe depth
52" probe depth
- ➔ Penetrate through even the most dense soil.

COATINGS



Plastisol Overcoating

Thick layer which provides high visibility and shock/vibration/damage protection.

Nylon Thermal Plastic

Thick layer which provides electrical insulation.

Steel Handle Assembly






Handles are rated against electrical shock protection of 10,000 volts.



Your Safety...Our Commitment

9030 Monroe Road, Houston, TX 77061
www.heathus.com PH:713.844.1300

SPECIFICATIONS

| | |
|--|--|
|  | Plastic-Coated Handle |
|  | Utility & Heavy-Duty Assembly Nut/Guide Plug |
|  | Replacement Utility & Heavy-Duty Rod |
|  | Utility & Heavy-Duty Plunger Bar |
|  | Utility & Heavy-Duty Anglefin (0.75" dia.) Plunger Bar |

40" Probing Depth Complete Bars

| | |
|---------------------|-----------------------------------|
| Utility Straight | 64" (162.6 cm); 10 lbs (4.5 kg) |
| Utility Anglefin | 64" (162.6 cm); 13.6 lbs (5.9 kg) |
| Heavy Duty Straight | 64" (162.6 cm); 13.5 lbs (6.2 kg) |
| Heavy Duty Anglefin | 64" (162.6 cm); 16.6 lbs (7.6 kg) |

Handles

| | |
|---------------------|--|
| Utility Straight | 22.6" x 1.7 (57.4x 4.3 cm); 6.2 lbs (2.8 kg) |
| Utility Anglefin | 22.6" x 6.5" (57.4 x 16.51 cm); 9.8 lbs (4.4 kg) |
| Heavy Duty Straight | 23.5" x 2.1" (59.7 x 5.3 cm); 8.9 lbs (4.1 kg) |
| Heavy Duty Anglefin | 23.7" x 7.7" (60.2 x 19.5 cm); 12 lbs (5.4 kg) |

52" Probing Depth Complete Bars

| | |
|---------------------|----------------------------------|
| Heavy Duty Straight | 76" (193 cm); 14.1 lbs. (6.4 kg) |
| Heavy Duty Anglefin | 76" (193 cm); 17.2 lbs. (7.8 kg) |

Rods

| | |
|----------------------|--|
| 40" Utility Standard | 59.5" x 0.5" (151 x 1.27 cm); 3.8 lbs (1.7 kg) |
| 40" Heavy Duty | 59.5" x 0.5" (151 x 1.27 cm); 4.6 lbs (2.0 kg) |
| 52" Heavy Duty | 71.5" x 0.5" (182 x 1.27 cm); 5.2 lbs (2.5 kg) |

ORDERING DETAILS

| Heath Part No. | Description | Heath Part No. | Description |
|----------------|---|----------------|--|
| 1900474 | Complete, heavy-duty, 40" rod, w/ball tip | 1002-0 | Replacement handle heavy-duty, anglefin |
| 1900478 | Complete, heavy-duty, 52" rod, w/ball tip | 1014-0 | Replacement handle utility model, anglefin |
| 1900487 | Complete, utility model, 40" rod, w/ball tip | 1910472 | Replacement rod heavy-duty, 40", with guide plug & ball tip |
| 1000-4 | Complete heavy-duty, 40" rod, ball tip, anglefin | 1910473 | Replacement rod heavy-duty, 52", with guide plug & ball tip |
| 1000-5 | Complete heavy-duty, 52" rod, ball tip, anglefin | 1910489 | Replacement rod utility model, 40", with guide plug & ball tip |
| 1013-4 | Complete utility model, 40" rod, ball tip, anglefin | 1022-0 | Threaded ball tip - replacement |
| 1910468 | Replacement handle, heavy-duty model | 1910469 | Guide plug (assembly nut), heavy-duty model |
| 1910483 | Replacement handle, utility model | 1910482 | Guide plug (assembly nut), utility model |
| | | 104314 | Collar, shaft for rod depth adjustment |

Heath Consultants Incorporated operates under a continual product improvement program and reserves the right to make improvements and/or changes without prior notification.



Your Safety...Our Commitment

9030 Monroe Road, Houston, TX 77061
www.heathus.com PH:713.844.1300