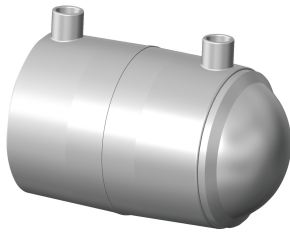


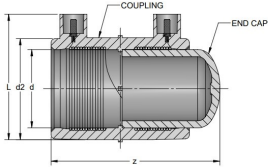
Data sheet

valid from: 8/3/21



ELECTROFUSION CAP: PE2708, CTS, 4.7R Pin

- Pin Type: 4.7S (4.7 Solid Pin)
- Approval: ASTM D2513
- Approval: ASTM F1055
- Approval: CSA B137.4.1 (Indicated with *)



Size (inch)	GF Code	weight (lb)	CSA	d (inch)	d2 (inch)	z (inch)	L (inch)	Box Qty
1/2	360 000 858	0.1	*	0.62	1.13	3.15	1.87	40
1	360 021 201	0.2		1.14	1.72	2.98	2.32	40
1 1/4	360 000 865	0.2		1.38	1.88	3.56	2.56	30

The technical data are not binding. They neither constitute expressly warranted characteristics nor guaranteed properties nor a guaranteed durability. They are subject to modification. Our General Terms of Sale apply.

Georg Fischer Piping Systems Ltd, Postfach, CH-8201 Schaffhausen/Switzerland

Phone +41 -(0)52-631 1111

e-mail: info.ps@georgfischer.com

Internet: <http://www.gfps.com>