

# Electrofusion

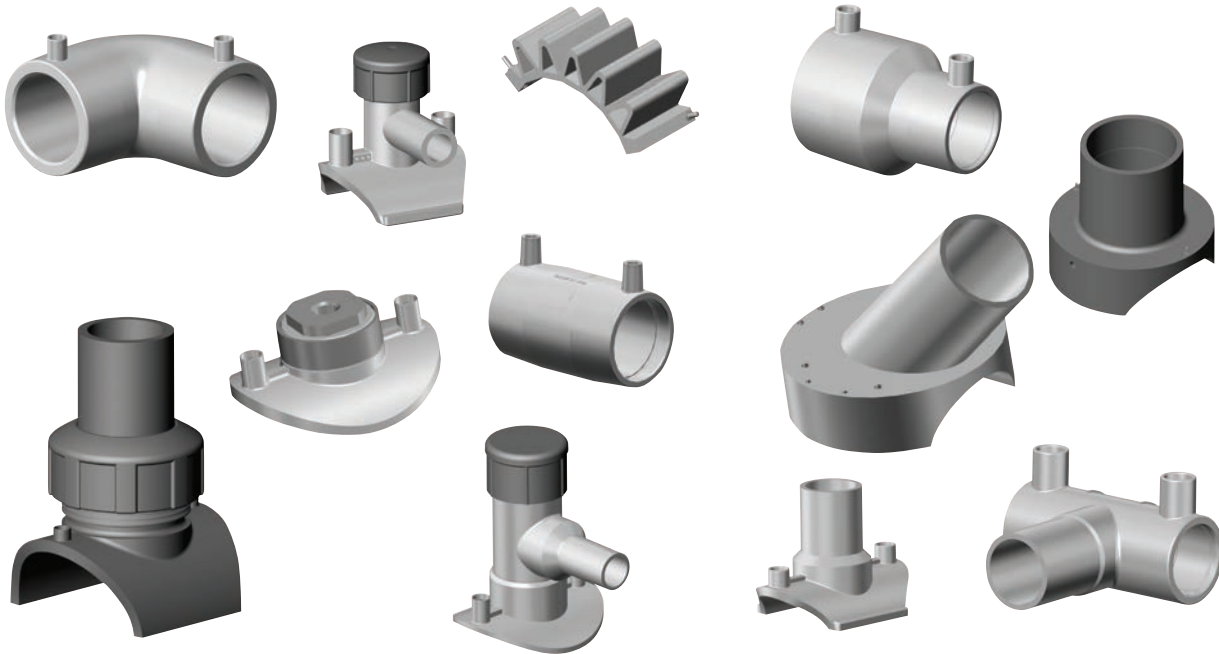


**Disclaimer**

Information in the catalog

GF Central Plastics is as diligent as possible in compiling and updating the information in its catalog. However, GF Central Plastics does not guarantee the correctness and completeness of the information provided in its catalog. Equally, GF Central Plastics does not guarantee that this information is up to date. Drawings dimensions and weights, unless otherwise noted by tolerances, should be considered for reference only and may not reflect the exact physical measurements of the parts. For questions concerning our products, their specifications and their utilization please contact your local Regional Sales Manager or Customer Service Representative of GF Central Plastics. For comments concerning the product catalog, please email [gfccentralmarketing@georgfischer.com](mailto:gfccentralmarketing@georgfischer.com).

## Electrofusion: Fittings Information



GF Central Plastics' Electrofusion fittings are designed and manufactured in accordance with ASTM F-1055 for use with pipe conforming to ASTM D2513/3035, F-714 and with Butt fittings conforming to ASTM D3261 as applicable. These fittings can be supplied with an integral identification resistor which is recognized by GF Central Plastics' processors to automatically set the proper fusion parameters. Electrofusion fittings are supplied with a 24 digit ISO compliant barcode label which facilitates the simple input of correct fusion parameters.

PE2406/PE2708 and PE3408/PE4710 Electrofusion fittings are produced from high quality virgin resins that have designated listings of PE2406/2708 or PE3408/PE4710 both of which comply with ASTM D3350.

### Features

- Compatible for fusion to either PE2406/PE2708 or PE3408/PE4710 and other similar pipe.
- Cross-fusion compatible without special fusion instructions
- Pressure rated for natural gas and potable water applications.
- PE3408/PE4710 fittings utilize NSF listed resin
- PE3408/PE4710 fittings are tested to the requirements of AWWA C906
- PE3408/PE4710 fittings are FM approved (where applicable – see FM Section)
- CSA Certification (where applicable)
- Available in metric sizes

## Electrofusion: Product Information

According to ASTM F1290-90, electrofusion is defined as

**“a heat fusion joining process where the heat source is an integral part of the fitting, such that when an electrical current is applied, heat is produced that melts and joins the plastic.”**

At GF Central Plastics, we are proud to be recognized as the company that pioneered and introduced the concept of electrofusion to industries throughout the United States in 1983.

Recognized as an industry leader in the world of electrofusion fitting design and manufacturing, GF Central Plastics offers our customers the most complete package of electrofusion fittings. All designed, manufactured and tested in Shawnee, Oklahoma, under the highest ISO 9001 quality standards and serviced by an experienced staff of the most knowledgeable and customer-friendly professionals you could hope to find.

Bringing unrivaled knowledge, experience and manufacturing capabilities to industries throughout the world, GF Central Plastics delivers innovative and cost effective pipe joining solutions right to your door step. Servicing the polyethylene fitting needs in natural gas, potable water, municipal wastewater, oil and gas gathering, mining, landfill, telecommunications, geothermal, irrigation and other industries, GF Central Plastics is helping to ensure that your conventional fusion job is done right – the first time.

With an extensive and state of the art in-house testing facility, GF Central Plastics performs all of the following tests on all of our Electrofusion fittings.

- ASTM D1599 - Minimum Hydraulic Burst Pressure Test.
- ASTM D1598 - Sustained Pressure Test.
- ASTM F1055 Tensile Strength Test.
- Joint Integrity Test.
- ASTM F1055 9.4.1 Crush test of pipe without separation from electrofusion zone.
- ASTM D3034 - Gasketed Outlet Tested to 30 psi > 100 hrs (where applicable)
- PE3408/PE4710 fittings are tested to the requirements of AWWA C906 (where applicable).

# Table of Contents

## Electrofusion

Couplings	1
Elbows	5
Caps	6
Reducers	9
Tapping Tees	14
Saddles	
Branch Saddles	40
Transition Saddles	52
WYEs	72
Flex Restraints	73
Index	74



**ELECTROFUSION COUPLING**  
**PE2406/PE2708**  
**CTS/IPS**

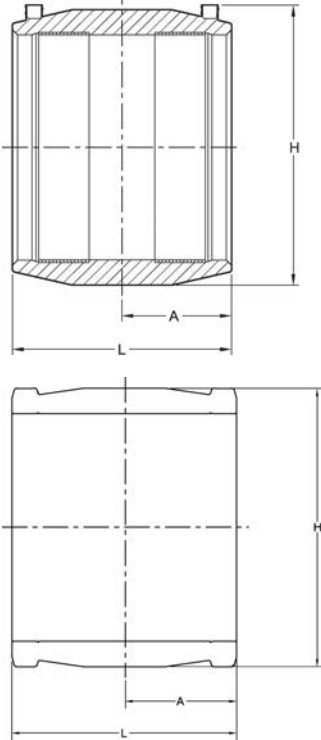
- Pin Type: 4.7R (4.7 Pin with Resistor)
- \*Approval: ASTM D2513/F1055
- Approval: ASTM D2513
- Approval: ASTM F1055
- Approval: CSA B137.4.1

Note: Operating pressure is 200 psi for PE4710 couplings in allowable applications.

\* Industrial Non-Compliant ASTM Fittings

\*\* For use with Bar-Code Processor Only

Please call for more information on availability, pricing, other sizes and dimensions.



<...>	Size (inch)	GFCP Part No.	GF Part No.	weight (lb)	H (inch)	L (inch)	A (inch)	Box Qty
	1/2 CTS	5760001	360 000 884	0.110	2.01	3.15	1.57	50
*	3/4 CTS	5757042	360 000 888	0.110	2.15	2.98	1.42	40
	1 CTS	5760005	360 000 892	0.198	2.52	3.46	1.73	25
*	1-1/4 CTS	10001613	360 000 896	0.154	2.56	3.30	1.57	30
	1/2 IPS	5757001	360 000 886	0.132	2.15	2.98	1.42	40
	3/4 IPS	5760004	360 000 890	0.154	2.48	3.46	1.73	25
	1 IPS	5760006	360 000 894	0.132	2.63	3.46	1.73	25
	1-1/4 IPS	5760008	360 000 898	0.220	3.04	3.86	1.93	50
	1-1/2 IPS	5760010	360 000 900	0.419	3.36	4.33	2.07	35
	2 IPS	5760012	360 000 921	0.419	3.78	4.72	2.36	25
	3 IPS	5757007	360 000 934	1.146	5.18	5.59	2.72	36
	4 IPS	5757008	360 000 937	1.565	6.51	6.14	3.00	10
	6 IPS	5757009	360 000 941	4.365	8.70	8.35	4.10	8
*	6 IPS	10001682	360 000 940	4.145	8.70	8.35	4.10	8
	8 IPS	5757010	360 000 945	8.422	11.20	9.48	4.70	4



**ELECTROFUSION COUPLING**  
**PE3408/PE4710**  
**CTS/IPS**

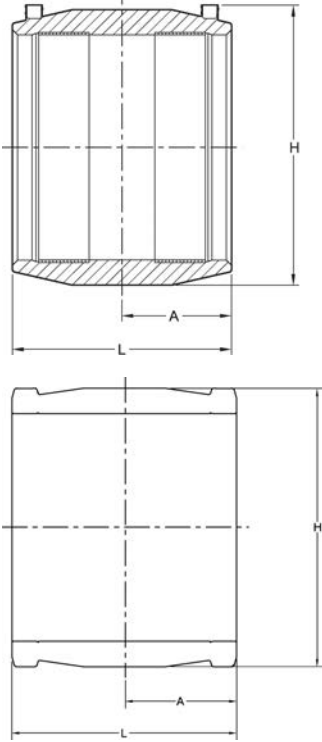
- Pin Type: 4.7R (4.7 Pin with Resistor)
- Approval: ASTM D2513
- Approval: ASTM F1055
- Approval: AWWA C906
- Approval: NSF-61
- \*Approval: FM 1613; FM CL150; NSF-61
- \*\*Approval: FM 1613; FM CL200; NSF-61

Note: Operating pressure is 200 psi for PE4710 couplings in allowable applications.

\* Industrial Non-Compliant ASTM Fittings

\*\* For use with Bar-Code Processor Only

Please call for more information on availability, pricing, other sizes and dimensions.



<...>	Size (inch)	GFPC Part No.	GF Part No.	weight (lb)	H (inch)	L (inch)	A (inch)	Box Qty
	1/2 CTS	5760019	360 000 883	0.088	2.01	3.15	1.57	50
	3/4 CTS	10004578	360 000 887	0.132	2.15	2.98	1.42	40
	1 CTS	5760023	360 000 891	0.198	2.52	3.46	1.73	25
	1-1/4 CTS	10004573	360 000 895	0.154	2.56	3.30	1.57	30
*	2 CTS	10004580	360 000 919	0.463	3.59	4.37	2.18	40
	1/2 IPS	10004627	360 000 885	0.132	2.15	2.98	1.42	40
	3/4 IPS	5760022	360 000 889	0.220	2.48	3.46	1.73	25
	1 IPS	5760024	360 000 893	0.132	2.63	3.46	1.73	25
	1-1/2 IPS	5760028	360 000 899	0.331	3.36	4.33	2.17	35
	1-1/4 IPS	5760026	360 000 897	0.287	2.56	3.30	1.57	50
	2 IPS	5760030	360 000 920	0.375	3.78	4.72	2.36	25
	3 IPS	10000358	360 000 933	1.168	5.18	5.59	2.72	36
**	4 IPS	10000360	360 000 936	1.676	6.51	6.14	3.00	10
	6 IPS	10011339	360 021 241	4.145	8.74	8.19	4.09	8
**	6 IPS	10000359	360 000 939	4.497	8.70	8.35	4.10	8
	7 IPS	10003970	360 000 942	4.960	8.93	8.19	4.09	8
**	8 IPS	10000361	360 000 944	8.444	11.20	9.48	4.70	4
*	10 IPS	10004579	360 000 902	15.741	13.41	10.50	5.00	1
**	10 IPS	10000362	360 000 903	15.234	13.10	10.50	5.00	1
*	12 IPS	10004571	360 000 905	23.104	15.84	11.50	5.50	1
**	12 IPS	10000363	360 000 906	23.898	15.84	11.50	5.50	1



**ELECTROFUSION COUPLING  
PE3408/PE4710  
DIPS**

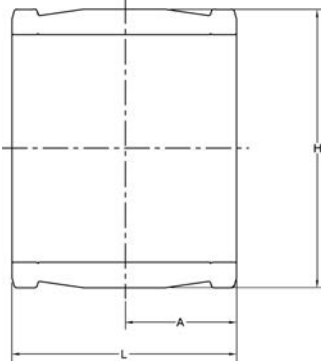
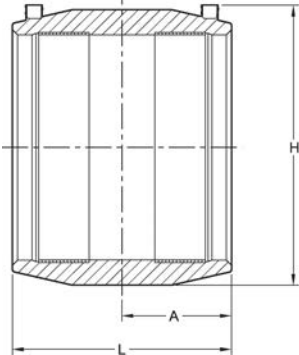
- Pin Type: 4.7S (4.7 Solid Pin)
- Approval: ASTM F1055
- Approval: NSF-61
- \*Approval: ASTM D2513; AWWA C906
- \*\*Approval: ASTM D2513; AWWA C906; FM1613; CL200
- \*\*\*Approval: AWWA C906

Note: Operating pressure is 200 psi for PE4710 couplings in allowable applications.

\* Industrial Non-Compliant ASTM Fittings

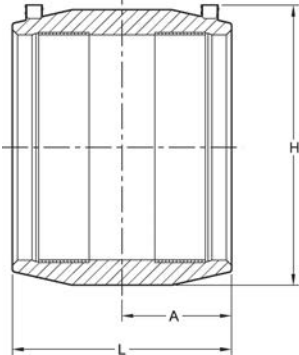
\*\* For use with Bar-Code Processor Only

Please call for more information on availability, pricing, other sizes and dimensions.



<...>	Main Size (inch)	GFCP Part No.	GF weight Part No.	GF weight (lb)	H (inch)	L (inch)	A (inch)	Box Qty
***	4 DIPS	10000353	360 000 935	1.565	6.06	6.93	3.46	10
***	6 DIPS	10000354	360 000 938	5.975	8.74	8.19	4.09	8
	8 DIPS	10000355	360 000 943	8.378	11.14	10.16	5.08	4
*	10 DIPS	10000356	360 000 901	15.344	13.70	10.90	5.50	1
***	12 DIPS	10000357	360 000 904	28.704	16.20	12.80	6.40	1





**ELECTROFUSION LARGE DIAMETER COUPLING**  
**PE3408/PE4710**  
**IPS/DIPS**

- Pin Type: 4.7S (4.7 Solid Pin)
- Approval: ASTM F1055
- Approval: NSF-61
- \*Approval: ASTM D2513; AWWA C906
- \*\*Approval: ASTM D2513; AWWA C906; FM1613; CL200
- \*\*\*Approval: AWWA C906

Note: Operating pressure is 200 psi for PE4710 couplings in allowable applications.

Note: Large diameter couplings are available only to approved distributors.

Please call for more information on availability, pricing, other sizes and dimensions. The products listed are standard stocking options. However, GF Central Plastics offers thousands of different configurations as well as custom innovative structures.

<...>	Size (inch)	GFCP Part No.	GF Part No.	weight (lb)	H (inch)	L (inch)	A (inch)	Box Qty
**	14 IPS	10000202	360 000 909	35.186	17.24	12.13	6.06	1
**	16 IPS	10000204	360 000 913	47.091	19.65	13.54	6.77	1
**	18 IPS	10000207	360 000 917	65.610	22.13	14.96	7.48	1
**	20 IPS	10000210	360 000 924	91.007	24.57	16.46	8.23	1
**	22 IPS	10000213	360 000 926	117.991	27.21	17.95	8.98	1
**	24 IPS	10000216	360 000 930	177.009	30.59	19.50	9.75	1
	26 IPS	10004581	360 000 932	155.007	30.59	19.50	9.75	1
*	14 DIPS	10000205	360 000 907	52.999	19.65	13.54	6.77	1
*	16 DIPS	10000208	360 000 911	72.003	22.13	14.96	7.48	1
*	18 DIPS	10000211	360 000 915	97.995	24.57	16.46	8.23	1
*	20 DIPS	10000214	360 000 922	125.002	27.21	17.95	8.98	1
*	24 DIPS	10000218	360 000 928	183.998	31.69	19.50	9.75	1

# Elbows

**ELECTROFUSION FITTINGS: 45° Elbow  
PE3408/PE4710, DR11  
IPS**

- Outlet Wall: DR11
- Pin Type: 4.7S (4.7 Solid Pin)
- Approval: ASTM D2513
- Approval: ASTM F1055
- Approval: AWWA C906
- Approval: NSF-61

Please call for more information on availability, pricing, other sizes and dimensions.

Size (inch)	GFCP Part No.	GF weight Part No.	weight (lb)	A (inch)	L (inch)	H (inch)	Box Qty
2	10012171	360 021 099	1.301	1	9	4	10

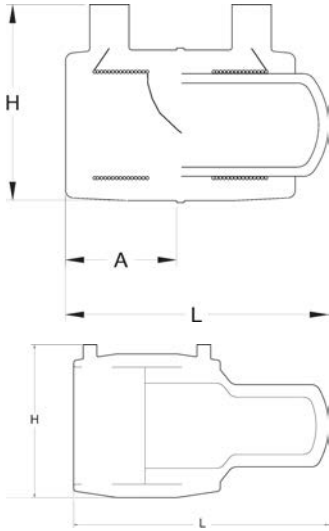
# Caps



## ELECTROFUSION CAP PE3408/PE4710

- Pin Type: 4.7R (4.7 Pin with Resistor)
- Approval: ASTM D2513
- Approval: ASTM F1055
- Approval: AWWA C906

Please call for more information on availability, pricing, other sizes and dimensions.



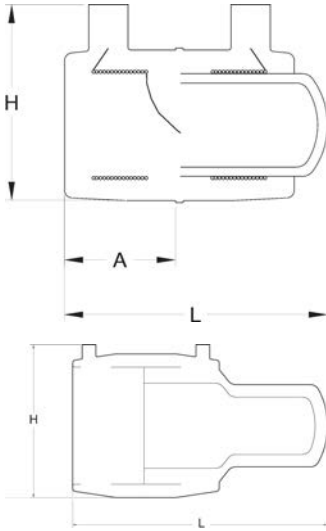
Size (inch)	GFCP Part No.	GF Part No.	weight (lb)	H (inch)	L (inch)	A (inch)	Box Qty
1/2 CTS	<b>5760300</b>	<b>360 004 294</b>	0.132	1.87	3.15	1.36	40
1 CTS	<b>10004867</b>	<b>360 000 861</b>	0.220	2.32	2.98	1.36	40
1 1/4 CTS	<b>10004561</b>	<b>360 000 864</b>	0.243	2.56	4.82	1.87	30
3/4 IPS	<b>5760303</b>	<b>360 000 860</b>	0.220	2.32	3.52	1.36	50
1 IPS	<b>5760305</b>	<b>360 000 862</b>	0.220	2.56	3.82	1.57	40
1 1/4 IPS	<b>5760307</b>	<b>360 000 866</b>	0.353	3.00	5.13	1.82	40
1 1/4 IPS	<b>5760309</b>	<b>360 003 700</b>	0.573	3.00	5.13	1.82	30
2 IPS	<b>5760311</b>	<b>360 000 869</b>	0.595	3.82	4.94	2.09	25
3 IPS	<b>10004564</b>	<b>360 000 871</b>	2.138	5.18	10.30	2.72	10
4 IPS	<b>10004565</b>	<b>360 000 874</b>	3.064	6.51	10.89	3.00	4
6 IPS	<b>10004566</b>	<b>360 000 876</b>	8.951	8.70	14.71	4.10	4
8 IPS	<b>10004567</b>	<b>360 000 879</b>	7.011	11.20	15.61	4.70	1
12 IPS	<b>10004563</b>	<b>360 000 868</b>	41.998	15.70	17.68	5.75	1



**ELECTROFUSION CAP  
PE2406/PE2708**

- Pin Type: 4.7R (4.7 Pin with Resistor)
- Approval: ASTM D2513
- Approval: ASTM F1055
- Approval: CSA B137.4.1
- \*Approval: ASTM D2513/F1055

Please call for more information on availability, pricing, other sizes and dimensions.



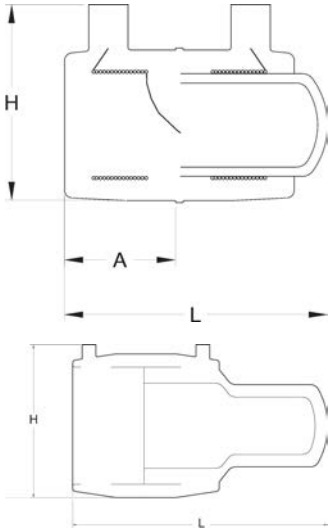
<...>	Size (inch)	GFCP Part No.	GF Part No.	weight (lb)	H (inch)	L (inch)	A (inch)	Box Qty
	1/2 CTS	<b>5753281</b>	<b>360 000 858</b>	0.132	1.87	3.15	1.36	40
*	1/2 IPS	<b>10008888</b>	<b>360 000 859</b>	0.132	2.15	3.31	1.42	40
	3/4 IPS	<b>10012886</b>	<b>360 021 200</b>	0.220	2.32	3.52	1.36	40
*	1 CTS	<b>10012701</b>	<b>360 021 201</b>	0.220	2.32	2.98	1.36	40
	1 IPS	<b>5753271</b>	<b>360 000 863</b>	0.198	2.56	3.82	1.57	40
*	1 1/4 CTS	<b>5753279</b>	<b>360 000 865</b>	0.220	2.56	4.82	1.57	30
	1 1/4 IPS	<b>5753273</b>	<b>360 000 867</b>	0.375	3.00	5.13	1.82	30
	2 IPS	<b>10013860</b>	<b>360 029 059</b>	0.595	3.82	4.94	2.09	25
*	2 IPS	<b>5753277</b>	<b>360 000 870</b>	0.617	3.82	4.94	2.09	25
*	3 IPS	<b>5753247</b>	<b>360 000 872</b>	2.161	5.18	10.30	2.72	10
	3 IPS	<b>10013867</b>	<b>360 029 060</b>	2.161	5.18	10.30	2.72	10
*	4 IPS	<b>5753249</b>	<b>360 000 875</b>	3.109	6.51	10.89	3.00	10
	4 IPS	<b>10013868</b>	<b>360 029 061</b>	3.109	6.51	10.89	3.00	4
*	6 IPS	<b>5753251</b>	<b>360 000 877</b>	4.740	8.70	14.71	4.10	4
	6 IPS	<b>10013869</b>	<b>360 029 062</b>	4.740	8.70	14.71	4.10	4
	8 IPS	<b>10013870</b>	<b>360 029 063</b>	7.011	11.20	15.61	4.70	4
*	8 IPS	<b>5753253</b>	<b>360 000 880</b>	7.011	11.20	15.61	4.70	4



**ELECTROFUSION CAP  
PE2406/PE2708**

- Pin Type: 4.7S (4.7 Solid Pin)
  - Approval: ASTM D2513
  - Approval: ASTM F1055
- Please call for more information on availability, pricing, other sizes and dimensions.

Size (inch)	GFCP Part No.	GF weight Part No.	weight (lb)	H (inch)	L (inch)	A (inch)	Box Qty
3 IPS	<b>5753228</b>	<b>360 000 873</b>	2.161	5.18	10.30	2.72	10
8 IPS	<b>5753234</b>	<b>360 000 881</b>	7.011	11.20	15.61	4.70	4



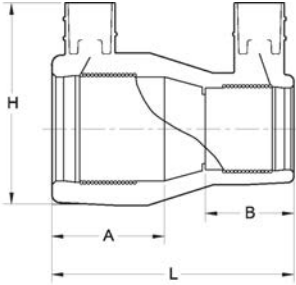
# Reducers



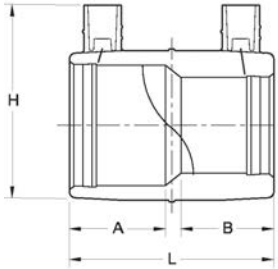
**ELECTROFUSION REDUCER**  
**PE3408/PE4710**  
**CTS/IPS**

- Pin Type: 4.7R (4.7 Pin with Resistor)
- Approval: ASTM D2513
- Approval: ASTM F1055
- Approval: AWWA C906

Please call for more information on availability, pricing, other sizes and dimensions.



STYLE #1



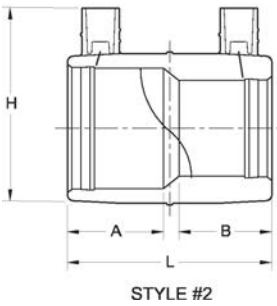
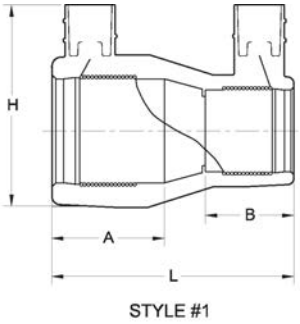
STYLE #2

Max Size (inch)	Min Size (inch)	GFCP Part No.	GF weight Part No.	GF weight (lb)	Style	H (inch)	L (inch)	A (inch)	B (inch)	Box Qty
1 CTS	1/2 CTS	10007238	360 001 064	0.154	1	2.50	3.28	1.31	1.47	40
1 CTS	3/4 CTS	10007392	360 001 066	0.176	2					40
1 CTS	3/4 IPS	10008849	360 001 067	0.176	2	2.50	3.28	1.47	1.55	40
1 1/4 CTS	1 IPS	10004630	360 001 078	0.176	2	2.56	3.30	1.55	1.55	30
3/4 IPS	1/2 CTS	10004595	360 001 061	0.154	1	2.50	3.28	1.25	1.47	40
1 IPS	1/2 CTS	10003869	360 001 069	0.176	1	2.60	3.28	1.46	1.46	30
1 IPS	1 CTS	10004629	360 001 075	0.176	1	2.63	3.28	1.42	1.43	30
1 1/4 IPS	1 CTS	10008218	360 001 080	0.331	2	3.00	3.70	1.88	1.57	40
3/4 IPS	1/2 IPS	10010494	360 021 360	0.132	1	2.50	3.28	1.25	1.47	40
1 IPS	1/2 IPS	10004628	360 001 071	0.154	1	2.60	3.28	1.46	1.53	30
1 1/4 IPS	1 IPS	10004625	360 001 081	0.309	2	3.00	3.71	1.88	1.57	40
1 IPS	3/4 IPS	10003816	360 001 073	0.198	1	2.63	3.28	1.42	1.43	30
1 1/4 IPS	3/4 IPS		360 060 184	0.270						40
2 IPS	1 1/4 IPS	10011052	360 021 371	0.639	1		4.75			25



**ELECTROFUSION REDUCER**  
**PE2406/PE2708**  
**CTS/IPS**

- Pin Type: 4.7R (4.7 Pin with Resistor)
  - Approval: ASTM D2513
  - Approval: ASTM F1055
  - \*Approval: CSA B137.4.1
- Please call for more information on availability, pricing, other sizes and dimensions.



<...>	Max Size (inch)	Min Size (inch)	GFCP Part No.	GF Part No.	weight (lb)
	1 CTS	1/2 CTS	<b>10000481</b>	<b>360 001 065</b>	0.132
	1 1/4 CTS	1 CTS	<b>10000518</b>	<b>360 001 077</b>	0.154
	1 CTS	3/4 IPS	<b>10000479</b>	<b>360 001 068</b>	0.132
	1 1/4 CTS	1 IPS	<b>5757068</b>	<b>360 001 079</b>	0.154
*	3/4 IPS	1/2 CTS	<b>5757069</b>	<b>360 001 062</b>	0.132
*	1 IPS	1/2 CTS	<b>5757070</b>	<b>360 001 070</b>	0.176
*	1 IPS	1 CTS	<b>5757071</b>	<b>360 001 076</b>	0.154
	3/4 IPS	1/2 IPS	<b>10000477</b>	<b>360 001 063</b>	0.132
*	1 IPS	1/2 IPS	<b>5757072</b>	<b>360 001 072</b>	0.176
*	1 IPS	3/4 IPS	<b>5757073</b>	<b>360 001 074</b>	0.176
*	1 1/4 IPS	1 IPS	<b>5757074</b>	<b>360 022 945</b>	0.000

Style	H (inch)	L (inch)	A (inch)	B (inch)	Box Qty
1	2.50	3.28	1.31	1.47	40
1	2.56	3.30	1.53	1.52	40
2	2.50	3.28	1.36	1.44	40
2	2.56	3.30	1.55	1.55	30
1	2.50	3.28	1.25	1.47	40
1	2.60	3.28	1.46	1.46	30
1	2.63	3.28	1.42	1.43	30
1	2.50	3.28	1.47	1.55	40
1	2.60	3.28	1.46	1.53	30
1	2.63	3.28	1.42	1.43	30
2	3.00	3.70	1.88	1.57	40

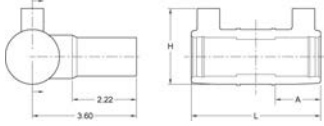
# Tees



## ELECTROFUSION FITTINGS: TEE KIT PE2406/PE2708

- Pin Type: 4.7R (4.7 Pin with Resistor)
  - Approval: ASTM D2513
  - Approval: ASTM F1055
  - Approval: ASTM D3261
- Kit includes (2) EF couplings and (1) butt tee

Please call for more information on availability, pricing, other sizes and dimensions.



Size (inch)	GFCP Part No.	GF weight Part No.	GF weight (lb)	H (inch)	L (inch)	A (inch)	Box Qty
1/2 CTS	10012912	360 021 382	0.309				30
1 CTS	10012913	360 021 384	0.551				20
1 1/4 IPS	10012991	360 021 385	0.705	3.00	5.24	1.82	25

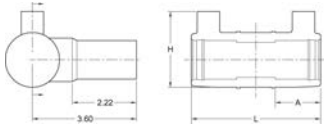


## ELECTROFUSION FITTINGS: TEE KIT PE3408/PE4710, DR11

- Pin Type: 4.7R (4.7 Pin with Resistor)
- Approval: ASTM D2513
- Approval: ASTM F1055
- Approval: ASTM D3261
- Approval: AWWA C906
- Approval: NSF-61

Kit includes (2) EF couplings and (1) butt tee

Please call for more information on availability, pricing, other sizes and dimensions.



Size (inch)	GFCP Part No.	GF weight Part No.	GF weight (lb)	H (inch)	L (inch)	A (inch)	Box Qty
1 CTS	10012874	360 021 383	0.705				20
2 IPS	10012875	360 021 388	0.002	3.95	6.51	2.26	15
4 IPS	10012876	360 021 391	0.002				1
6 IPS	10012877	360 021 393	0.002				1
8 IPS	10012878	360 021 396	0.002				1



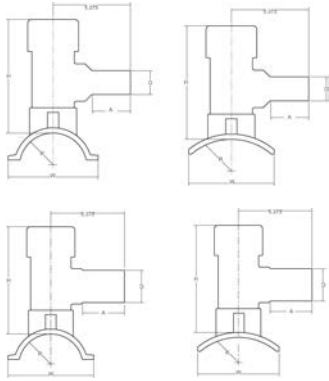
# High Volume Tapping Tee with Stainless Steel Cutter



## ELECTROFUSION HIGH VOLUME TAPPING TEE with STAINLESS STEEL CUTTER PE3408/PE4710, B-Under Clamp Outlet Size: 2" IPS, DR11

- Pin Type: 4.7R (4.7 Pin with Resistor)
- Cutter Size Material: 1.5/Stainless Steel
- Approval: ASTM D2513
- Approval: ASTM F1055
- Approval: ASTM D3261
- Approval: AWWA C906
- Approval: NSF-61

Please call for more information on availability, pricing, other sizes and dimensions.



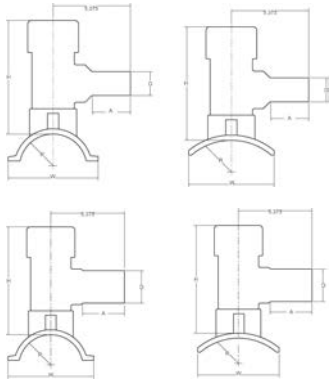
Main Size (inch)	GFCP Part No.	GF weight Part No.	(lb)	A (inch)	W (inch)	H (inch)	D (inch)	Box Qty
2 IPS (BF)	<b>10004598</b>	<b>360 001 005</b>	3.131	3.00	3.59	6.65	2.60	10
2 IPS	<b>10012182</b>	<b>360 021 286</b>	3.505	3.00	3.59	6.65	2.60	10



## ELECTROFUSION HIGH VOLUME TAPPING TEE with STAINLESS STEEL CUTTER PE3408/PE4710 Outlet Size: 2" IPS, DR11

- Pin Type: 4.7R (4.7 Pin with Resistor)
- Cutter Size Material: 1.8/Stainless Steel
- Approval: ASTM D2513
- Approval: ASTM F1055
- Approval: ASTM D3261
- Approval: AWWA C906
- Approval: NSF-61

Please call for more information on availability, pricing, other sizes and dimensions. The products listed are standard stocking options. However, GF Central Plastics offers thousands of different configurations as well as custom innovative structures.



Main Size (inch)	GFCP Part No.	GF weight Part No.	(lb)
3 IPS (BF)	<b>10004613</b>	<b>360 001 015</b>	2.866
3 IPS	<b>10012183</b>	<b>360 021 296</b>	3.175
4 IPS (BF)	<b>10004610</b>	<b>360 001 025</b>	3.020
4 IPS/DIPS (BF)	<b>10006024</b>	<b>360 001 032</b>	3.020
4 IPS	<b>10012184</b>	<b>360 021 307</b>	3.748
6 IPS/DIPS (BF)	<b>10004622</b>	<b>360 001 043</b>	3.792
6 IPS	<b>10012185</b>	<b>360 021 320</b>	3.527
8 IPS (BF)	<b>10007720</b>	<b>360 001 050</b>	2.756
8 IPS	<b>10012186</b>	<b>360 021 334</b>	2.954
10 IPS	<b>10012187</b>	<b>360 021 264</b>	2.910
12 IPS	<b>10012188</b>	<b>360 021 275</b>	28.506

Clamp Type	A (inch)	W (inch)	H (inch)	D (inch)	Box Qty
C-Under Clamp	3.00	3.59	6.65	2.60	10
C-Under Clamp	3.00	3.59	6.65	2.60	10
D-Under Clamp	3.00	4.60	6.66	2.60	8
D-Under Clamp	3.00	4.60	6.66	2.60	8
D-Under Clamp	3.00	4.60	6.66	2.60	8
E-Under Clamp	3.00	8.68	8.43	2.60	5
E-Under Clamp	3.00	8.68	8.43	2.60	5

table continued on the next page

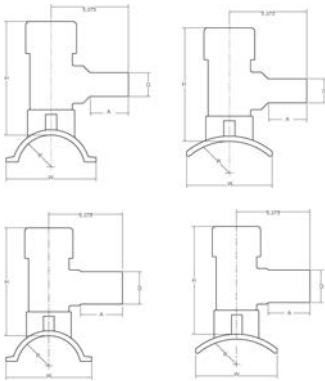
Clamp Type	A (inch)	W (inch)	H (inch)	D (inch)	Box Qty
E-Top Load	2.68	5.92	7.88	1.60	8
E-Top Load	2.68	5.92	7.88	1.60	8
E-Top Load	3.00	6.10	7.88	1.60	8
E-Top Load	3.00	6.10	7.88	1.60	8



**ELECTROFUSION HIGH VOLUME TAPPING TEE with STAINLESS STEEL CUTTER**  
**PE3408/PE4710, H-Top Load**  
**Outlet Size: 2" IPS, DR11**

- Pin Type: 4.7S (4.7 Solid Pin)
- Cutter Size Material: 1.8/Stainless Steel
- Approval: ASTM D2513
- Approval: ASTM F1055
- Approval: ASTM D3261
- Approval: AWWA C906
- Approval: NSF-61

Please call for more information on availability, pricing, other sizes and dimensions.



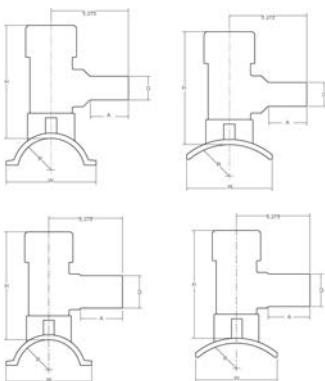
Main Size (inch)	GFCP Part No.	GF weight Part No.	(lb)	A (inch)	W (inch)	H (inch)	D (inch)	Box Qty
8 DIPS (SF)	<b>10004582</b>	<b>360 021 323</b>	1.830	3.00	5.92	7.88	2.60	15
8 DIPS (BF)	<b>10004616</b>	<b>360 001 045</b>	4.101	3.00	5.92	7.88	2.60	30
8 IPS (BF)	<b>10007505</b>	<b>360 001 053</b>	2.756	3.00	5.92	7.88	2.60	8
10 IPS (BF)	<b>10014208</b>	<b>360 029 065</b>	6.151	3.00	6.10	7.88	2.60	8
12 IPS (BF)	<b>10003561</b>	<b>360 000 995</b>	3.153	3.00	6.10	7.88	2.60	8
12 DIPS (BF)	<b>10012489</b>	<b>360 021 270</b>	6.151	3.00	6.10	7.88	2.60	8



**ELECTROFUSION HIGH VOLUME TAPPING TEE with STAINLESS STEEL CUTTER**  
**PE3408/PE4710, H-Top Load**  
**Outlet Size: 1.25" IPS (BF), DR10/11**

- Pin Type: 4.7S (4.7 Solid Pin)
- Cutter Size Material: 1.8/Stainless Steel
- Approval: ASTM D2513
- Approval: ASTM F1055
- Approval: ASTM D3261

Please call for more information on availability, pricing, other sizes and dimensions.



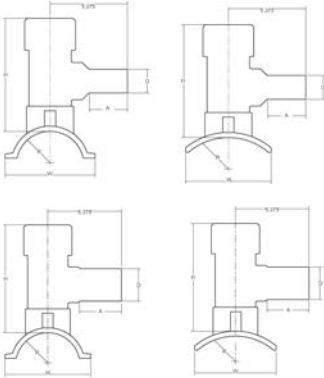
Main Size (inch)	GFCP Part No.	GF weight Part No.	(lb)	A (inch)	W (inch)	H (inch)	D (inch)	Box Qty
12	<b>10009314</b>	<b>360 000 991</b>	3.351	2.68	6.10	7.88	1.66	8



**ELECTROFUSION HIGH VOLUME TAPPING TEE with STAINLESS STEEL CUTTER**  
**PE3408/PE4710, H-Top Load**  
**Outlet Size: 1.25" IPS (BF), DR11**

- Pin Type: 4.7S (4.7 Solid Pin)
- Cutter Size Material: 1.5/Stainless Steel
- Approval: ASTM D2513
- Approval: ASTM F1055
- Approval: ASTM D3261
- Approval: AWWA C906
- Approval: NSF-61

Please call for more information on availability, pricing, other sizes and dimensions.



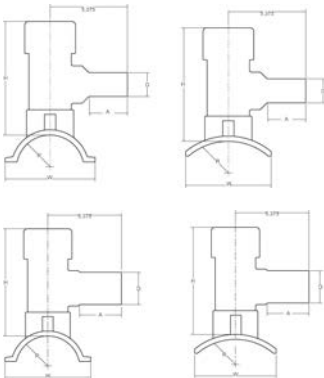
Main Size (inch)	GFCP Part No.	GF weight Part No.	(lb)	A (inch)	W (inch)	H (inch)	D (inch)	Box Qty
8	10004614	360 001 044	4.101	2.68	6.10	7.88	1.66	8



**ELECTROFUSION HIGH VOLUME TAPPING TEE with STAINLESS STEEL CUTTER**  
**PE3408/PE4710**  
**Outlet Size: 1.25" IPS (BF), DR11**

- Pin Type: 4.7R (4.7 Pin with Resistor)
- Cutter Size Material: 1.5/Stainless Steel
- Approval: ASTM D2513
- Approval: ASTM F1055
- Approval: ASTM D3261
- Approval: AWWA C906
- Approval: NSF-61

Please call for more information on availability, pricing, other sizes and dimensions. The products listed are standard stocking options. However, GF Central Plastics offers thousands of different configurations as well as custom innovative structures.



Main Size (inch)	GFCP Part No.	GF weight Part No.	(lb)	Clamp Type	A (inch)	W (inch)	H (inch)	D (inch)	Box Qty
2	10004594	360 001 002	3.351	Under Clamp (B)	2.68	3.59	6.65	1.60	10
3	10004604	360 001 011	3.307	Under Clamp (C)	2.68	4.60	6.66	1.66	10
4	10004611	360 001 031	3.527	Under Clamp (D)	2.68	6.26	7.27	1.66	8
6	10004617	360 001 041	3.748	Under Clamp (E)	2.68	8.68	8.43	1.66	5
8	10007719	360 001 050	2.756	Top Load (E)	2.68	6.10	7.88	1.60	8

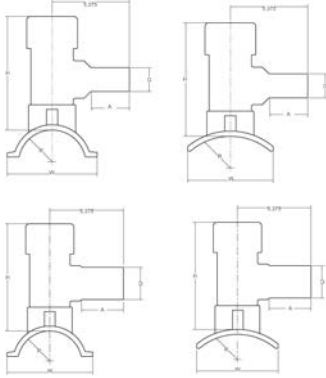
# High Volume Tapping Tee



**ELECTROFUSION HIGH VOLUME TAPPING TEE with STEEL CUTTER**  
**PE3408/PE4710**  
**Outlet Size: 2" IPS**

- Pin Type: 4.7R (4.7 Pin with Resistor)
- Cutter Size Material: 1.8/Steel
- Approval: ASTM D2513
- Approval: ASTM F1055
- Approval: ASTM D3261

Please call for more information on availability, pricing, other sizes and dimensions.



Main Size (inch)	SDR	GF Part No.	GF Part No.	GF weight (lb)
3	11	10009495	360 003 443	3.439
3	9	10009664	360 003 469	2.910
3	11	10009718	360 003 126	3.439
3	9	10009722	360 003 749	3.439
3	11	10012511	360 021 291	0.002
4	11	10009497	360 003 446	2.624
4	9	10009668	360 003 471	2.624
4	11	10009724	360 003 127	2.624
4	9	10009727	360 003 750	2.624
4	11	10012512	360 021 302	3.682
6	11	10009499	360 003 447	3.263
6	9	10009672	360 003 473	3.814
6	11	10009730	360 003 128	3.461
6	9	10009734	360 003 751	3.814
6	11	10011777	360 021 314	0.002
6	11	10012513	360 021 313	3.968
8	11	10009501	360 003 448	2.998
8	9	10009676	360 003 475	2.910
8	11	10009695	360 003 480	2.756
8	11	10011190	360 021 332	3.461
8	11	10011778	360 021 331	0.002
8	11	10012514	360 021 330	3.395

Clamp Type	A (inch)	W (inch)	H (inch)	D (inch)	Box Qty
Under Clamp (C)	3.00	4.60	6.66	2.60	10
Under Clamp (C)	3.00	4.60	6.66	2.60	10
Underpart	3.00	4.60	6.66	2.60	10
Underpart	3.00	4.60	6.66	2.60	10
Underpart	3.00	4.60	6.66	2.60	10
Under Clamp (D)	3.00	6.26	7.27	2.60	8
Under Clamp (D)	3.00	6.26	7.27	2.60	8
Underpart	3.00	6.26	7.27	2.60	7
Underpart	3.00	6.26	7.27	2.60	8
Underpart	3.00	6.26	7.27	2.60	10
Under Clamp (E)	3.00	8.68	8.43	2.60	5
Under Clamp (E)	3.00	8.68	8.43	2.60	5
Underpart	3.00	8.68	8.43	2.60	5
Underpart	3.00	8.68	8.43	2.60	5
Underpart	3.00	8.68	8.43	2.60	5
Underpart	3.00	8.68	8.43	2.60	10
Top Load (E)	3.00	5.92	7.88	2.60	8
Top Load (E)	3.00	5.92	7.88	2.60	8

table continued on the next page

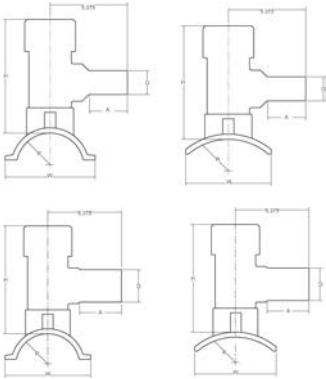
Clamp Type	A (inch)	W (inch)	H (inch)	D (inch)	Box Qty
Top Load (E)	3.00	5.92	7.88	2.60	5
Top Load (E)	3.00	5.92	7.88	2.60	8
Top Load (E)	3.00	5.92	7.88	2.60	5
Top Load (E)	3.00	5.92	7.88	2.60	10



**ELECTROFUSION HIGH VOLUME TAPPING TEE with STEEL CUTTER**  
**PE3408/PE4710**  
**Outlet Size: 2" IPS**

- Pin Type: 4.7R (4.7 Pin with Resistor)
- Cutter Size Material: 1.5/Steel
- Approval: ASTM D2513
- Approval: ASTM F1055
- Approval: ASTM D3261

Please call for more information on availability, pricing, other sizes and dimensions.



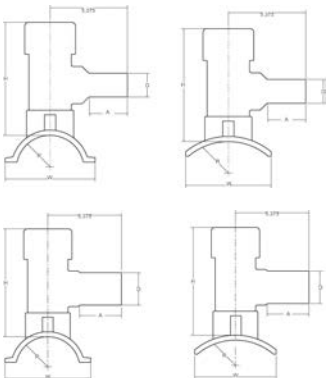
SDR	GFCP Part No.	GF Part No.	weight (lb)	Clamp Type	A (inch)	W (inch)	H (inch)	D (inch)	Box Qty
11	10003537	360 001 006	1.830	Under Clamp (B)	3.00	6.59	6.65	2.60	10
9	10006644	360 001 009	2.756	Under Clamp (B)	3.00	6.59	6.65	2.60	10
11	10010493	360 003 748	2.910	Underpart	3.00	6.59	6.65	2.60	10
11	10012510	360 021 281	3.329	Underpart	3.00	6.59	6.65	2.60	10



**ELECTROFUSION HIGH VOLUME TAPPING TEE with STEEL CUTTER**  
**PE3408/PE4710, DR11**  
**Outlet Size: 1 1/4" IPS**

- Pin Type: 4.7R (4.7 Pin with Resistor)
- Cutter Size Material: 1.5/Steel
- Approval: ASTM D2513
- Approval: ASTM F1055
- Approval: ASTM D3261

Please call for more information on availability, pricing, other sizes and dimensions. The products listed are standard stocking options. However, GF Central Plastics offers thousands of different configurations as well as custom innovative structures.



Main Size (inch)	GFCP Part No.	GF Part No.	weight (lb)	Clamp Type	A (inch)	B (inch)	H (inch)	D (inch)	Box Qty
2	10004588	360 001 003	1.830	Under Clamp (B)	2.68	3.59	6.65	1.66	10
6	10004618	360 001 034	3.263	Under Clamp (E)	2.68	3.59	6.65	1.66	5
2	10010492	360 003 743	2.888	Underpart	2.68	8.68	8.43	1.66	10



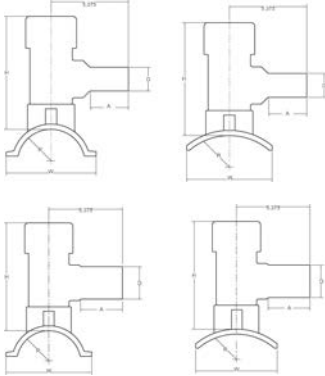
### ELECTROFUSION HIGH VOLUME TAPPING TEE with STEEL CUTTER

PE3408/PE4710, DR11

Outlet Size: 1 1/4" IPS (BF)

- Pin Type: 4.7R (4.7 Pin with Resistor)
- Cutter Size Material: 1.8/Steel
- Approval: ASTM D2513
- Approval: ASTM F1055
- Approval: ASTM D3261

Please call for more information on availability, pricing, other sizes and dimensions.



Main Size (inch)	GFCP Part No.	GF Part No.	weight (lb)
3	10009662	360 003 468	2.910
3	10009717	360 003 744	3.351
4	10009666	360 003 470	3.042
4	10009723	360 003 745	3.461
6	10009670	360 003 472	3.241
6	10009729	360 003 746	3.417
8	10009674	360 003 474	2.998

Clamp Type	A (inch)	W (inch)	H (inch)	D (inch)	B	Box Qty
Under Clamp (C)	2.68	1.60	6.66	1.66		10
Underpart	2.68	1.60	6.66	1.66		8
Under Clamp (D)	2.68	6.26	7.27	1.66		8
Underpart	2.68	6.26	7.27	1.66		8
Under Clamp (E)	2.68	8.68	8.43	1.66		5
Underpart	2.68	8.68	8.43	1.66		5
Top Load (E)	2.68	6.10	7.88	1.66		8



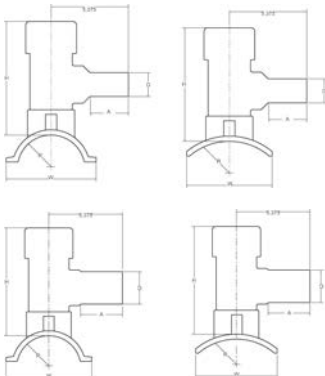
### ELECTROFUSION HIGH VOLUME TAPPING TEE

PE2406/PE2708, DR11

Outlet Size: 2" IPS (BF)

- Pin Type: 4.7R (4.7 Pin with Resistor)
- Cutter Size Material: 1.8/Steel
- Approval: ASTM D2513
- Approval: ASTM F1055
- Approval: ASTM D3261
- \*Approval: CSA B137.4.1

Please call for more information on availability, pricing, other sizes and dimensions. The products listed are standard stocking options. However, GF Central Plastics offers thousands of different configurations as well as custom innovative structures.



<...>	Main Size (inch)	Part No.	Part No.	weight (lb)
*	3	10009496	360 003 444	2.888
	3	10009688	360 021 293	3.880
	3	10009719	360 004 343	3.020
	3	10009720	360 021 295	3.880
*	4	10009498	360 002 881	3.020
	4	10009690	360 021 304	4.012
	4	10009725	360 004 344	3.616
	4	10009728	360 021 306	4.012
*	6	10009500	360 001 039	2.822
	6	10009731	360 004 345	3.836
*	6	10009754	360 021 316	3.990
	6	10012294	360 021 319	4.079
*	8	10009502	360 003 450	3.527
*	8	10009696	360 021 333	3.880

table continued on the next page

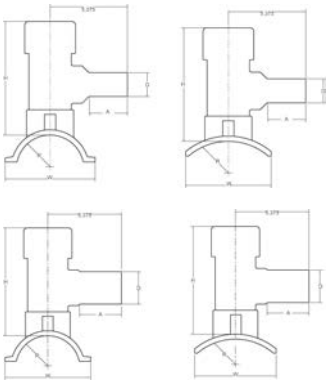
Clamp Type	A (inch)	W (inch)	H (inch)	D (inch)	Box Qty
Under Clamp (C)	3.00	4.60	6.66	2.60	10
Underpart	3.00	4.60	6.66	2.60	10
Underpart	3.00	4.60	6.66	2.60	7
Underpart	3.00	4.60	6.66	2.60	10
Under Clamp (D)	3.00	6.26	7.27	2.60	8
Underpart	3.00	6.26	7.27	2.60	10
Underpart	3.00	6.26	7.27	2.60	7
Underpart	3.00	6.26	7.27	2.60	10
Under Clamp (E)	3.00	8.68	8.43	2.60	5
Underpart	3.00	8.68	8.43	2.60	5
Under Clamp (E)	3.00	8.68	8.43	2.60	8
Underpart	3.00	8.68	8.43	2.60	5
Top Load (E)	3.00	5.92	7.88	2.60	8
Top Load (E)	3.00	5.92	7.88	2.60	5



**ELECTROFUSION HIGH VOLUME TAPPING TEE**  
**PE2406/PE2708, DR11**  
**Outlet Size: 2" IPS (BF), Common Dimensions: A: 3.00", D: 2.60"**

- Pin Type: 4.7R (4.7 Pin with Resistor)
- Cutter Size Material: 1.5/Steel
- Approval: ASTM D2513
- Approval: ASTM F1055
- Approval: ASTM D3261
- \*Approval: CSA B137.4

Please call for more information on availability, pricing, other sizes and dimensions. The products listed are standard stocking options. However, GF Central Plastics offers thousands of different configurations as well as custom innovative structures.



<...>	Main Size (inch)	GFCP Part No.	GF weight Part No.	(lb)	Clamp Type	W (inch)	H (inch)	Box Qty
	2	10010496	360 004 342	2.888	Underpart	3.59	6.65	10
	2	10012293	360 021 285	3.748	Underpart	3.59	6.65	10
	2	5757081	360 021 284	3.704	Under Clamp (B)	3.59	6.65	10
*	2	5757114	360 001 007	2.778	Under Clamp (B)	3.59	6.65	10
*	6	5757119	360 001 036	4.079	Under Clamp (E)	8.68	8.43	5
*	8	5757121	360 001 054	2.910	Top Load (E)	5.92	7.88	8



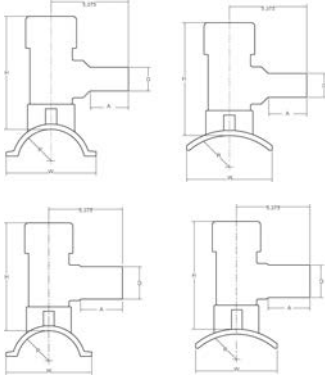
### ELECTROFUSION HIGH VOLUME TAPPING TEE

PE2406/PE2708, DR10/11

Outlet Size: 1 1/4" IPS (BF), Common Dimensions: A: 2.68", D: 1.66"

- Pin Type: 4.7R (4.7 Pin with Resistor)
- Cutter Size Material: 1.8/Steel
- Approval: ASTM D2513
- Approval: ASTM F1055
- Approval: ASTM D3261

Please call for more information on availability, pricing, other sizes and dimensions.



Main Size (inch)	GFCP Part No.	GF weight Part No.	GF weight (lb)	Clamp Type	W (inch)	H (inch)	Box Qty
3	10009661	360 021 289	3.307	Under Clamp (C)	4.60	6.66	10
3	10010968	360 021 288	3.395	Under Clamp (C)	4.60	6.66	10
4	10009665	360 021 300	3.042	Under Clamp (D)	6.26	7.27	7
4	10010969	360 021 299	3.219	Under Clamp (D)	6.26	7.27	10
6	10009669	360 021 311	3.241	Under Clamp (E)	8.68	8.43	5
6	10010970	360 021 310	3.483	Under Clamp (E)	8.68	8.43	5
8	10009673	360 021 326	3.439	Top Load (E)	6.10	7.88	10
8	10009892	360 021 327	3.439	Top Load (E)	6.10	7.88	10
8	10010109	360 021 324	3.439	Top Load (E)	6.10	7.88	10
8	10010971	360 021 325	3.175	Top Load (E)	6.10	7.88	5



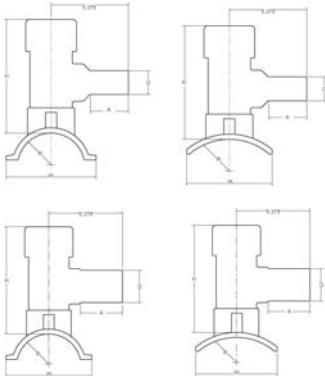
### ELECTROFUSION HIGH VOLUME TAPPING TEE

PE2406/PE2708, DR10/11

Outlet Size: 1 1/4" IPS (BF)

- Pin Type: 4.7R (4.7 Pin with Resistor)
- Cutter Size Material: 1.5/Steel
- Approval: ASTM D2513
- Approval: ASTM F1055
- Approval: ASTM D3261
- \*Approval: CSA B137.4

Please call for more information on availability, pricing, other sizes and dimensions.



<...>	Main Size (inch)	GFCP Part No.	GF weight Part No.	GF weight (lb)
	2	10010495	360 004 341	3.109
	2	10010967	360 021 278	2.998
*	2	10011853	360 021 279	4.365
*	2	5757109	360 001 001	3.329
*	3	5757110	360 001 010	2.800
*	4	5757111	360 001 021	3.483
*	6	5757112	360 001 033	3.660
*	8	5757113	360 001 046	2.888

Clamp Type	A (inch)	W (inch)	H (inch)	D (inch)	Box Qty
Underpart	2.68	3.59	6.65	1.66	10
Underpart	2.68	3.59	6.65	1.66	10
Under Clamp (B)	2.68	3.59	6.65	1.66	10
Under Clamp (B)	2.68	3.59	6.65	1.66	10
Under Clamp (C)	2.68	4.60	6.66	1.66	10
Under Clamp (D)	2.68	6.26	7.27	1.66	8
Under Clamp (E)	2.68	8.68	8.43	1.66	5
Top Load (E)	2.68	6.10	7.88	1.66	10



# Tapping Tee with Butt Outlet & Brass Cutter



## ELECTROFUSION TAPPING TEE with BUTT OUTLET and BRASS CUTTER PE3408/PE4710, DR7 Outlet Size: 1" IPS

- Pin Type: 4.7R (4.7 Pin with Resistor)
- Cutter Size Material: 0.8/Brass
- Approval: ASTM D2513
- Approval: ASTM F1055
- Approval: ASTM D3261
- Approval: AWWA C906

Please call for more information on availability, pricing, other sizes and dimensions.

Main Size (inch)	GF Part No.	GF Part No.	weight (lb)	Clamp Type	A (inch)	D (inch)	H (inch)	L (inch)	Box Qty
1 1/4 IPS	10011663	360 021 460	0.816	Under Clamp (A)	2.22	1.31	4.83	4.58	50
2 IPS	10009410	360 003 739	0.838	Underpart	2.22	1.31	5.06	4.50	40
2 IPS	10004790	360 001 276	0.816	Under Clamp (B)	2.22	1.31	5.06	4.50	40
3 IPS	10004810	360 001 310	0.904	Under Clamp (C)	2.22	1.31	5.18	4.58	40
4 IPS/DIPS	10004828	360 001 349	0.926	Under Clamp (D)	2.22	1.31	5.93	4.46	30
4 IPS	10009411	360 003 741	0.948	Underpart	2.22	1.31	5.93	4.46	30
6 IPS/DIPS	10004587	360 001 384	1.190	Under Clamp (E)	2.22	1.31	7.06	4.61	20
8 IPS/DIPS	10003798	360 001 413	0.705	Top Load (H)	2.22	1.31	4.14	4.60	40



## ELECTROFUSION TAPPING TEE with BUTT OUTLET and BRASS CUTTER PE3408/PE4710 Outlet Size: 1" CTS

- Pin Type: 4.7R (4.7 Pin with Resistor)
- Cutter Size Material: 0.8/Brass
- Approval: ASTM D2513
- Approval: ASTM F1055
- Approval: ASTM D3261
- Approval: AWWA C906

Please call for more information on availability, pricing, other sizes and dimensions.

Main Size (inch)	GF Part No.	GF Part No.	weight (lb)	Clamp Type	A (inch)	D (inch)	H (inch)	L (inch)	Box Qty
1 1/4 IPS	10011662	360 021 445	0.794	Under Clamp (A)	2.22	1.12	4.83	4.58	40
2 IPS	10003085	360 001 267	0.838	Under Clamp (B)	2.22	1.12	5.06	4.50	30
3 IPS	10004845	360 001 303	0.882	Under Clamp (C)	2.22	1.12	5.18	4.58	40
4 IPS/DIPS	10007380	360 001 348	0.926	Under Clamp (D)	2.22	1.12	5.93	4.46	30
6 IPS/DIPS	5757760	360 001 383	1.190	Under Clamp (E)	2.22	1.12	7.06	4.61	20
8 IPS/DIPS	10008645	360 001 412	0.794	Top Load (H)	2.22	1.12	4.14	4.60	40
8 IPS/DIPS	10006643	360 021 706	0.882	Top Load (H)	2.22	1.12	4.14	4.60	10



**ELECTROFUSION TAPPING TEE with BUTT OUTLET and BRASS CUTTER**  
**PE3408/PE4710, DR11**  
**Outlet Size: 3/4" IPS**

- Pin Type: 4.7R (4.7 Pin with Resistor)
- Cutter Size Material: 0.8/Brass
- Approval: ASTM D2513
- Approval: ASTM F1055
- Approval: ASTM D3261
- Approval: AWWA C906

Please call for more information on availability, pricing, other sizes and dimensions. The products listed are standard stocking options. However, GF Central Plastics offers thousands of different configurations as well as custom innovative structures.

Main Size (inch)	GFCP Part No.	GF Part No.	weight (lb)	Clamp Type	A (inch)	D (inch)	H (inch)	L (inch)	Box Qty
2	10006028	360 001 258	0.772	Under Clamp (B)	2.22	1.12	5.06	4.50	40
3	10004781	360 001 294	0.154	Under Clamp (C)	2.22	1.12	5.18	4.58	40
4	10004794	360 001 347	0.992	Under Clamp (D)	2.22	1.12	5.93	4.46	30
6	10006029	360 001 382	1.190	Under Clamp (E)	2.22	1.12	7.06	4.61	20
8	10004592	360 001 411	0.860	Top Load (H)	2.22	1.12	4.14	4.60	40

# Tapping Tee with Butt Outlet



## ELECTROFUSION TAPPING TEE with BUTT OUTLET PE2406/PE2708 Outlet Size: 1/2" CTS

- Pin Type: 4.7R (4.7 Pin with Resistor)
- Cutter Size Material: 0.8/Steel
- Approval: ASTM D2513
- Approval: ASTM F1055
- Approval: ASTM D3261
- Approval: CSA B137.4.1
- \*Approval: ASTM D2513/F1055/D2683

Please call for more information on availability, pricing, other sizes and dimensions. The products listed are standard stocking options. However, GF Central Plastics offers thousands of different configurations as well as custom innovative structures.

<...>	Main Size (inch)	GFCP Part No.	GF Part No.	weight (lb)
	1.25" IPS	10009385	360 004 329	0.838
	1.25" IPS	5757251	360 001 226	0.507
*	1.25" IPS	10011089	360 021 418	0.794
	2.00" IPS	10011097	360 021 481	0.860
	2.00" IPS	10011197	360 021 482	0.002
	2.00" IPS	5757248	360 001 247	0.485
	3.00" IPS	10011103	360 021 538	0.794
	3.00" IPS	10011104	360 021 539	1.257
	4.00" IPS	10011110	360 021 579	0.002
	4.00" IPS	5757249	360 001 315	0.904
	6.00" IPS	10011116	360 021 633	1.257
	6.00" IPS	10011117	360 021 634	0.002
	6.00" IPS	5757250	360 001 351	1.080
	8.00" IPS	5757253	360 001 386	0.728

Clamp Type	A (inch)	D (inch)	H (inch)	L (inch)	Box Qty
Under Clamp (A)	2.22	0.62	4.83	4.58	50
Under Clamp (A)	2.22	0.62	4.83	4.58	50
Under Clamp (A)	2.22	0.62	4.83	4.58	50
Underpart	2.22	0.62	5.06	4.50	40
Underpart	2.22	0.62	5.06	4.50	10
Under Clamp (B)	2.22	0.62	5.06	4.50	50
Under Clamp (C)	2.22	0.62	5.18	4.58	40
Under Clamp (C)	2.22	0.62	5.18	4.58	10
Underpart	2.22	0.62	5.93	4.46	30
Under Clamp (D)	2.22	0.62	5.93	4.46	30
Under Clamp (E)	2.22	0.62	7.06	4.61	10
Underpart	2.22	0.62	7.06	4.61	20
Under Clamp (E)	2.22	0.62	7.06	4.61	20
Under Clamp (H)	2.22	0.62	4.14	4.60	40



### ELECTROFUSION TAPPING TEE with BUTT OUTLET

PE2406/PE2708

Outlet Size: 1/2" IPS

- Pin Type: 4.7R (4.7 Pin with Resistor)
- Cutter Size Material: 0.8/Steel
- Approval: ASTM D2513
- Approval: ASTM F1055
- Approval: ASTM D3261
- Approval: CSA B137.4.1

Please call for more information on availability, pricing, other sizes and dimensions. The products listed are standard stocking options. However, GF Central Plastics offers thousands of different configurations as well as custom innovative structures.

Main Size (inch)	GFCP Part No.	GF Part No.	weight (lb)	Clamp Type	A (inch)	D (inch)	H (inch)	L (inch)	Box Qty
1 1/4 IPS	10011090	360 021 425	0.794	A-Under Clamp	2.22	0.84	4.83	4.58	50
2 IPS	10011099	360 021 490	0.882	B-Under Clamp	2.22	0.84	5.06	4.50	40
2 IPS	10011532	360 021 491	0.882	Underpart	2.22	0.84	5.06	4.50	50
3 IPS	10011105	360 021 541	1.080	C-Under Clamp	2.22	0.84	5.18	4.58	40
4 IPS	10011112	360 021 586	0.970	D-Under Clamp	2.22	0.84	5.93	4.46	30
6 IPS	10011118	360 021 639	1.257	E-Under Clamp	2.22	0.84	7.06	4.61	20
8 IPS	10011606	360 021 681	0.794	H-Under Clamp	2.22	0.84	4.41	4.60	40



### ELECTROFUSION TAPPING TEE with BUTT OUTLET

PE2406/PE2708

Outlet Size: 3/4" CTS

- Pin Type: 4.7R (4.7 Pin with Resistor)
- Cutter Size Material: 0.8/Steel
- Approval: ASTM D2513
- Approval: ASTM F1055
- Approval: ASTM D3261
- Approval: CSA B137.4.1

Please call for more information on availability, pricing, other sizes and dimensions. The products listed are standard stocking options. However, GF Central Plastics offers thousands of different configurations as well as custom innovative structures.

Main Size (inch)	GFCP Part No.	GF Part No.	weight (lb)	Clamp Type	A (inch)	D (inch)	H (inch)	L (inch)	Box Qty
1 1/4 IPS	10011092	360 021 429	0.002	Under Clamp (A)	2.22	0.87	4.83	4.58	50
2 IPS	5757161	360 001 252	0.750	Under Clamp (B)	2.22	0.87	5.06	4.50	40
3 IPS	5757162	360 001 290	0.794	Under Clamp (C)	2.22	0.87	5.18	4.50	40
4 IPS	5757163	360 001 319	0.002	Under Clamp (D)	2.22	0.87	5.93	4.46	30
6 IPS	5757164	360 001 355	0.002	Under Clamp (E)	2.22	0.87	7.06	4.61	20
8 IPS	5757167	360 001 390	0.794	Under Clamp (H)	2.22	0.87	4.14	4.60	40



**ELECTROFUSION TAPPING TEE with BUTT OUTLET**  
**PE2406/PE2708**  
**Outlet Size: 3/4" IPS**

- Pin Type: 4.7R (4.7 Pin with Resistor)
- Cutter Size Material: 0.8/Steel
- Approval: ASTM D2513
- Approval: ASTM F1055
- Approval: ASTM D3261
- Approval: CSA B137.4.1

Please call for more information on availability, pricing, other sizes and dimensions. The products listed are standard stocking options. However, GF Central Plastics offers thousands of different configurations as well as custom innovative structures.

Main Size (inch)	GFCP Part No.	GF Part No.	weight (lb)	Clamp Type	A (inch)	D (inch)	H (inch)	L (inch)	Box Qty
1 1/4 IPS	5757084	360 001 233	0.794	Under Clamp (A)	2.22	1.08	4.83	4.58	50
2 IPS	5757087	360 001 259	0.794	Under Clamp (B)	2.22	1.08	5.06	4.50	40
2 IPS	10009392	360 003 120	0.860	Under Clamp (B)	2.22	1.08	5.06	4.50	30
3 IPS	5757088	360 001 295	0.816	Under Clamp (C)	2.22	1.08	5.18	4.58	40
4 IPS	5757141	360 001 325	0.882	Under Clamp (D)	2.22	1.08	5.93	4.46	30
4 IPS	10009401	360 004 332	0.926	Under Clamp (D)	2.22	1.08	5.93	4.46	30
6 IPS	5757143	360 001 361	1.146	Under Clamp (E)	2.22	1.08	7.06	4.61	20
6 IPS	10009405	360 004 333	1.190	Under Clamp (E)	2.22	1.08	7.06	4.61	20



**ELECTROFUSION TAPPING TEE with BUTT OUTLET**  
**PE2406/PE2708**  
**Outlet Size: 1" CTS**

- Pin Type: 4.7R (4.7 Pin with Resistor)
- Cutter Size Material: 0.8/Steel
- Approval: ASTM D2513
- Approval: ASTM F1055
- Approval: ASTM D3261
- Approval: CSA B137.4.1

Please call for more information on availability, pricing, other sizes and dimensions. The products listed are standard stocking options. However, GF Central Plastics offers thousands of different configurations as well as custom innovative structures.

Main Size (inch)	GFCP Part No.	GF Part No.	weight (lb)	Clamp Type	A (inch)	D (inch)	H (inch)	L (inch)	Box Qty
1 1/4 IPS	5757030	360 001 240	0.882	Under Clamp (A)	2.22	1.12	4.83	4.58	50
1 1/4 IPS	10010563	360 021 451	0.816	Underpart	2.22	1.12	4.83	4.58	40
1 1/4 IPS	5757050	360 021 449	0.441	Under Clamp (A)	2.22	1.12	4.83	4.58	15
2 IPS	5757032	360 001 270	0.750	Under Clamp (B)	2.22	1.12	5.06	4.50	40
2 IPS	10009397	360 004 334	0.882	Underpart	2.22	1.12	5.06	4.50	40
2 IPS	10003171	360 001 272	0.882	Under Clamp (B)	2.22	1.12	5.06	4.50	10
2 IPS	5757052	360 021 515	0.485	Under Clamp (B)	2.22	1.12	5.06	4.50	15
3 IPS	5757033	360 001 306	0.816	Under Clamp (C)	2.22	1.12	5.18	4.58	40
3 IPS	10010564	360 021 556	0.970	Underpart	2.22	1.12	5.18	4.58	30
3 IPS	5757053	360 021 554	1.543	Under Clamp (C)	2.22	1.12	5.18	4.58	15
4 IPS	5757034	360 001 335	0.904	Under Clamp (D)	2.22	1.12	5.93	4.46	30
4 IPS	10009402	360 021 610	1.080	Underpart	2.22	1.12	5.93	4.46	20
4 IPS	10010565	360 021 608	0.002	Underpart	2.22	1.12	5.93	4.46	20
4 IPS	5757054	360 021 606	0.617	Under Clamp (D)	2.22	1.12	5.93	4.46	10
6 IPS	5757036	360 001 370	1.080	Under Clamp (E)	2.22	1.12	7.06	4.61	20

table continued on the next page

Main Size (inch)	GFCP Part No.	GF Part No.	weight (lb)	Clamp Type	A (inch)	D (inch)	H (inch)	L (inch)	Box Qty
6 IPS	<b>10009407</b>	<b>360 004 335</b>	0.551	Underpart	2.22	1.12	7.06	4.61	10
6 IPS	<b>5757056</b>	<b>360 021 658</b>	0.772	Under Clamp (E)	2.22	1.12	7.06	4.61	10
6 IPS	<b>5757058</b>	<b>360 021 695</b>	0.463	Underpart	2.22	1.12	4.14	4.60	10
8 IPS	<b>5757038</b>	<b>360 001 399</b>	0.728	Top Load (H)	2.22	1.12	4.14	4.60	40

# Tapping Tee



## ELECTROFUSION TAPPING TEE

PE2406/PE2708

Outlet Size: 1" IPS, DR7

- Pin Type: 4.7R (4.7 Pin with Resistor)
- Cutter Size Material: 0.8/Steel
- Approval: ASTM D2513
- Approval: ASTM F1055
- Approval: ASTM D3261
- Approval: CSA B137.4.1

Please call for more information on availability, pricing, other sizes and dimensions. The products listed are standard stocking options. However, GF Central Plastics offers thousands of different configurations as well as custom innovative structures.

Main Size (inch)	GFCP Part No.	GF Part No.	weight (lb)	Clamp Type	A (inch)	D (inch)	H (inch)	L (inch)	Box Qty
1 1/4 IPS	5757083	360 001 244	0.794	Under Clamp (A)	2.22	1.31	4.83	4.58	50
1 1/4 IPS	10009388	360 004 336	0.794	Underpart	2.22	1.31	4.83	4.58	50
2 IPS	5757150	360 001 278	0.772	Under Clamp (B)	2.22	1.31	4.94	4.50	40
2 IPS	10009398	360 003 122	0.904	Underpart	2.22	1.31	4.94	4.50	40
3 IPS	5757151	360 001 312	0.904	Under Clamp (C)	2.22	1.31	5.06	4.50	40
3 IPS	10009399	360 004 337	0.816	Underpart	2.22	1.31	5.18	4.58	40
4 IPS	5757152	360 001 340	0.926	Under Clamp (D)	2.22	1.31	5.96	4.46	30
4 IPS	10009403	360 004 338	1.058	Underpart	2.22	1.31	5.96	4.46	20
6 IPS	5757153	360 001 376	1.102	Under Clamp (E)	2.22	1.31	7.06	4.61	20
6 IPS	10009408	360 004 339	1.301	Underpart	2.22	1.31	7.06	4.61	20
8 IPS	5757157	360 001 404	0.794	Top Load Clamp (H)	2.22	1.31	4.14	4.60	40



## ELECTROFUSION TAPPING TEE

PE2406/PE2708

Outlet Size - 1 1/4" CTS

- Pin Type: 4.7R (4.7 Pin with Resistor)
- Cutter Size Material: 0.8/Steel
- Approval: ASTM D2513
- Approval: ASTM F1055
- Approval: ASTM D3261

Please call for more information on availability, pricing, other sizes and dimensions. The products listed are standard stocking options. However, GF Central Plastics offers thousands of different configurations as well as custom innovative structures.

Main Size (inch)	GFCP Part No.	GF Part No.	weight (lb)	Clamp Type	A (inch)	D (inch)	H (inch)	L (inch)	Box Qty
2 IPS	5757086	360 001 282	0.485	Under Clamp (B)			5.06	4.50	40
4 IPS	5757140	360 001 344	0.926	Under Clamp (D)			5.93	4.46	30
6 IPS	5757142	360 001 379	0.794	Under Clamp (E)			7.06	4.61	20
8 IPS	5757145	360 001 408	0.816	Top Load Clamp (H)			4.14	4.60	40

# Tapping Tee with Butt Outlet & Steel Cutter



**ELECTROFUSION TAPPING TEE with BUTT OUTLET and STEEL CUTTER**  
**PE3408/PE4710**  
**Outlet Size: 1/2" CTS**

- Pin Type: 4.7R (4.7 Pin with Resistor)
- Cutter Size Material: 0.8/Steel
- Approval: ASTM D2513
- Approval: ASTM F1055
- Approval: ASTM D3261

Please call for more information on availability, pricing, other sizes and dimensions. The products listed are standard stocking options. However, GF Central Plastics offers thousands of different configurations as well as custom innovative structures.

Main Size (inch)	GFCP Part No.	GF Part No.	weight (lb)	Clamp Type	A (inch)	D (inch)	H (inch)	L (inch)	Box Qty
1 1/4 IPS	<b>10004749</b>	<b>360 001 225</b>	0.728	Under Clamp (A)	2.22	0.62	4.83	4.58	50
1 1/4 IPS	<b>10010501</b>	<b>360 003 724</b>	0.002	Underpart	2.22	0.62	4.83	4.58	50
2 IPS	<b>10004761</b>	<b>360 001 246</b>	0.838	Under Clamp (B)	2.22	0.62	5.06	4.50	50
2 IPS	<b>10009389</b>	<b>360 003 725</b>	0.860	Underpart	2.22	0.62	5.06	4.50	40
3 IPS	<b>10010499</b>	<b>360 003 726</b>	0.948	Underpart	2.22	0.62	5.18	4.58	40
4 IPS	<b>10010502</b>	<b>360 003 727</b>	1.102	Underpart	2.22	0.62	5.93	4.46	25
4 IPS	<b>10011108</b>	<b>360 021 575</b>	0.882	Under Clamp (D)	2.22	0.62	5.93	4.46	30
6 IPS	<b>10010504</b>	<b>360 003 728</b>	1.257	Underpart	2.22	0.62	7.06	4.61	30
6 IPS	<b>10011115</b>	<b>360 021 630</b>	1.058	Under Clamp (E)	2.22	0.62	7.06	4.61	20



# Tapping Tee with Butt Outlet & Steel Cutter



## ELECTROFUSION TAPPING TEE with BUTT OUTLET and STEEL CUTTER PE3408/PE4710, DR11 Outlet Size: 3/4" IPS

- Pin Type: 4.7R (4.7 Pin with Resistor)
- Cutter Size Material: 0.8/Steel
- Approval: ASTM D2513
- Approval: ASTM F1055
- Approval: ASTM D3261
- \*Approval: AWWA C906; NSF-61

Please call for more information on availability, pricing, other sizes and dimensions. The products listed are standard stocking options. However, GF Central Plastics offers thousands of different configurations as well as custom innovative structures.

<...>	Main Size (inch)	GFCP Part No.	GF Part No.	weight (lb)
	1 1/4 IPS	10008687	360 001 232	0.794
	1 1/4 IPS	10010422	360 003 730	0.838
	2 IPS	10010423	360 003 145	0.860
*	2 IPS	10012665	360 021 494	0.904
	3 IPS	10010424	360 003 731	0.948
	4 IPS	10010425	360 003 732	1.124
*	4 IPS	10012666	360 021 627	0.992
	6 IPS	10010426	360 003 733	1.257
*	6 IPS	10012667	360 021 670	1.190
	8 IPS	10008654	360 021 702	0.860
	8 IPS	10010427	360 003 715	0.750

Clamp Type	A (inch)	D (inch)	H (inch)	L (inch)	Box Qty
Under Clamp (A)	2.22	1.12	4.83	4.58	50
Underpart	2.22	1.12	4.83	4.58	50
Underpart	2.22	1.12	5.06	4.50	30
Under Clamp (B)	2.22	1.12	5.06	4.50	40
Underpart	2.22	1.12	5.18	4.58	25
Underpart	2.22	1.12	5.93	4.46	20
Under Clamp (D)	2.22	1.12	5.93	4.46	30
Underpart	2.22	1.12	7.06	4.61	12
Under Clamp (E)	2.22	1.12	7.06	4.61	20
Under Clamp (H)	2.22	1.12	4.14	4.60	10
Under Clamp (H)	2.22	1.12	4.14	4.60	40



### ELECTROFUSION TAPPING TEE with BUTT OUTLET and STEEL CUTTER

PE3408/PE4710

Outlet Size: 1" CTS

- Pin Type: 4.7R (4.7 Pin with Resistor)
- Cutter Size Material: 0.8/Steel
- Approval: ASTM D2513
- Approval: ASTM F1055
- Approval: ASTM D3261

Please call for more information on availability, pricing, other sizes and dimensions. The products listed are standard stocking options. However, GF Central Plastics offers thousands of different configurations as well as custom innovative structures.

Main Size (inch)	GFCP Part No.	GF weight Part No.	(lb)	Clamp Type	A (inch)	D (inch)	H (inch)	L (inch)	Box Qty
1 1/4 IPS	10007328	360 001 238	0.705	Under Clamp (A)	2.22	1.12	4.83	4.58	50
1 1/4 IPS	10010566	360 021 446	0.838	Underpart	2.22	1.12	4.83	4.58	40
2 IPS	10009394	360 003 734	0.860	Underpart	2.22	1.12	5.06	4.50	30
2 IPS	10010093	360 021 513	0.838	Under Clamp (B)	2.22	1.12	5.06	4.50	20
3 IPS	10007349	360 001 304	0.794	Under Clamp (C)	2.22	1.12	5.18	4.58	40
3 IPS	10010500	360 003 735	0.948	Underpart	2.22	1.12	5.18	4.58	30
4 IPS	10010503	360 003 736	1.080	Underpart	2.22	1.12	5.93	4.46	25
6 IPS	10010505	360 003 737	1.146	Underpart	2.22	1.12	7.06	4.46	15
8 IPS	10012485	360 021 693	1.058	Top Load (H)	2.22	1.12	4.14	4.60	10



### ELECTROFUSION TAPPING TEE with BUTT OUTLET and STEEL CUTTER

PE3408/PE4710

Outlet Size: 1" IPS

- Pin Type: 4.7R (4.7 Pin with Resistor)
- Cutter Size Material: 0.8/Steel
- Approval: ASTM D2513
- Approval: ASTM F1055
- Approval: ASTM D3261

Please call for more information on availability, pricing, other sizes and dimensions. The products listed are standard stocking options. However, GF Central Plastics offers thousands of different configurations as well as custom innovative structures.

Main Size (inch)	SDR	GFCP Part No.	GF weight Part No.	(lb)
1 1/4 IPS	7	10003452	360 001 243	0.728
1 1/4 IPS	7	10009387	360 003 738	0.750
2 IPS	7	10003355	360 001 277	0.794
2 IPS	7	10009395	360 003 740	0.904
3 IPS	7	10004792	360 001 311	0.838
3 IPS	7	10013267	360 021 567	0.882
4 IPS	7	10003701	360 001 339	0.948
4 IPS	7	10013266	360 021 624	0.970
6 IPS	11	10004820	360 021 662	1.411
6 IPS	7	10004823	360 001 375	1.301
8 IPS	7	10004858	360 001 403	0.772

Clamp Type	A (inch)	D (inch)	H (inch)	L (inch)	Box Qty
Under Clamp (A)	2.22	1.31	4.83	4.58	30
Underpart	2.22	1.31	4.83	4.58	30
Under Clamp (B)	2.22	1.31	5.06	4.50	40
Underpart	2.22	1.31	5.06	4.50	30
Under Clamp (C)	2.22	1.31	5.18	4.58	40
Underpart	2.22	1.31	5.18	4.58	30
Under Clamp (D)	2.22	1.31	5.93	4.46	30

table continued on the next page

<b>Clamp Type</b>	<b>A</b>	<b>D</b>	<b>H</b>	<b>L</b>	<b>Box Qty</b>
	(inch)	(inch)	(inch)	(inch)	
Underpart	2.22	1.31	5.93	4.46	30
Underpart	2.22	1.31	7.06	4.61	10
Under Clamp (E)	2.22	1.31	7.06	4.61	20
Top Load (H)	2.22	1.31	4.14	4.60	40

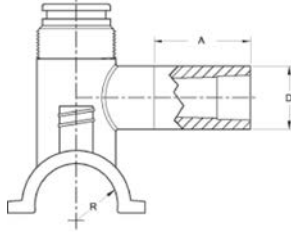
---

# Tapping Tee Trainer with Butt Outlet

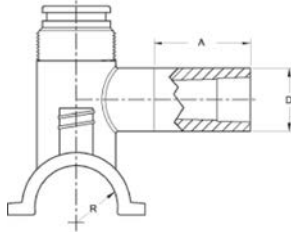


## ELECTROFUSION TAPPING TEE TRAINER with BUTT OUTLET PE2406/PE2708, B-Under Clamp Outlet Size: 1/2" CTS

- Pin Type: 4.7R (4.7 Pin with Resistor)
  - Approval: ASTM D2513
  - Approval: ASTM F1055
- Please call for more information on availability, pricing, other sizes and dimensions.



Main Size (inch)	GFCP Part No.	GF weight Part No.	A (lb)	D (inch)	L (inch)	H (inch)	Box Qty
2 IPS	<b>5757147</b>	<b>360 004 296</b>	0.463	2.22	1.31	4.50	50



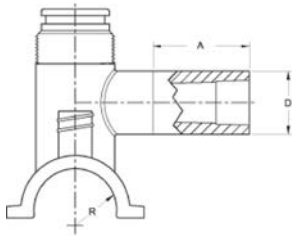
## ELECTROFUSION TAPPING TEE TRAINER with BUTT OUTLET PE2406/PE2708 Outlet Size: 1" CTS

- Pin Type: 4.7R (4.7 Pin with Resistor)
  - Approval: ASTM D2513
  - Approval: ASTM F1055
  - \*Approval: ASTM D3261
- Please call for more information on availability, pricing, other sizes and dimensions. The products listed are standard stocking options. However, GF Central Plastics offers thousands of different configurations as well as custom innovative structures.



<...>	Main Size (inch)	GFCP Part No.	GF weight Part No.	(lb)
	2 IPS	<b>5757146</b>	<b>360 004 297</b>	0.485
*	2 IPS	<b>10010588</b>	<b>360 021 517</b>	0.529
*	4 IPS	<b>10010599</b>	<b>360 004 298</b>	0.860

Clamp Type	A (inch)	D (inch)	H (inch)	L (inch)	Box Qty
Under Clamp (B)	2.22	1.31	5.06	4.50	50
Underpart	2.22	1.31	5.06	4.50	50
Underpart	2.22	1.31	5.93	4.46	30



### ELECTROFUSION TAPPING TEE TRAINER with BUTT OUTLET

**PE3408/PE4710, DR7**

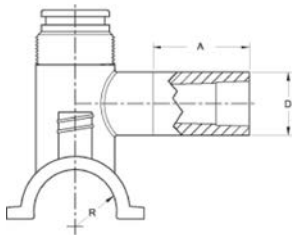
**Outlet Size: 1" IPS**

- Pin Type: 4.7R (4.7 Pin with Resistor)
- Approval: ASTM D2513
- Approval: ASTM F1055
- Approval: ASTM D3261

Please call for more information on availability, pricing, other sizes and dimensions. The products listed are standard stocking options. However, GF Central Plastics offers thousands of different configurations as well as custom innovative structures.



Main Size (inch)	GFCP Part No.	GF Part No.	weight (lb)	Clamp Type	H (inch)	L (inch)	Box Qty
1 1/4 IPS	<b>10010553</b>	<b>360 021 461</b>	0.463	Under Clamp (A)	4.83	4.58	35
1 1/4 IPS	<b>10010558</b>	<b>360 021 462</b>	0.463	Underpart	4.83	4.58	40
2 IPS	<b>10004808</b>	<b>360 021 532</b>	0.485	Under Clamp (B)	5.06	4.50	50
2 IPS	<b>10009396</b>	<b>360 021 533</b>	0.507	Underpart	5.06	4.50	50
2 IPS	<b>10010548</b>	<b>360 021 534</b>	0.529	Underpart	5.06	4.50	35
3 IPS	<b>10010554</b>	<b>360 021 565</b>	0.529	Under Clamp (C)	5.18	4.58	30
3 IPS	<b>10010559</b>	<b>360 021 566</b>	0.551	Underpart	5.18	4.58	30
4 IPS	<b>10010556</b>	<b>360 021 622</b>	0.066	Under Clamp (D)	5.93	4.46	20
4 IPS	<b>10010561</b>	<b>360 021 623</b>	0.639	Underpart	5.93	4.46	20
6 IPS	<b>10010557</b>	<b>360 021 666</b>	0.772	Under Clamp (E)	7.06	4.61	12
6 IPS	<b>10010562</b>	<b>360 021 667</b>	0.794	Underpart	7.06	4.61	12



### ELECTROFUSION TAPPING TEE TRAINER with BUTT OUTLET

**PE2406/PE2708, DR7**

**Outlet Size: 1" IPS**

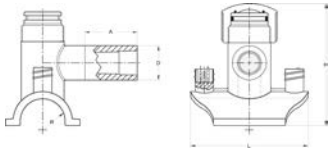
- Pin Type: 4.7R (4.7 Pin with Resistor)
- Approval: ASTM D2513
- Approval: ASTM F1055

Please call for more information on availability, pricing, other sizes and dimensions. The products listed are standard stocking options. However, GF Central Plastics offers thousands of different configurations as well as custom innovative structures.



Main Size (inch)	GFCP Part No.	GF Part No.	weight (lb)	Clamp Type	A (inch)	D (inch)	H (inch)	L (inch)	Box Qty
1 1/4 IPS	<b>5757154</b>	<b>360 002 964</b>	0.463	Under Clamp (A)			4.83	4.58	50
2 IPS	<b>5757148</b>	<b>360 002 963</b>	0.507	Under Clamp (B)			5.06	4.50	50
4 IPS	<b>5757166</b>	<b>360 004 299</b>	0.573	Under Clamp (D)			5.93	4.46	30
6 IPS	<b>5757165</b>	<b>360 004 300</b>	0.573	Under Clamp (E)			7.06	4.61	20

# Tapping Tee with Socket Outlet

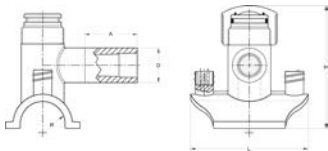


## ELECTROFUSION TAPPING TEE with SOCKET OUTLET PE2406/PE2708, D-Under Clamp Outlet Size: 1/2" IPS

- Pin Type: 4.7R (4.7 Pin with Resistor)
- Cutter Size Material: 0.8/Steel
- Approval: ASTM D2513
- Approval: ASTM F1055
- Approval: ASTM D2683

Please call for more information on availability, pricing, other sizes and dimensions. The products listed are standard stocking options. However, GF Central Plastics offers thousands of different configurations as well as custom innovative structures.

Main Size (inch)	GFCP Part No.	Part No.	weight (lb)	A (inch)	D (inch)	H (inch)	L (inch)	Box Qty
4 IPS	10011111	360 021 585	1.036			5.93	4.46	30



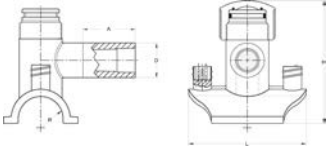
## ELECTROFUSION TAPPING TEE with SOCKET OUTLET PE2406/PE2708 Outlet Size: 3/4" IPS

- Pin Type: 4.7R (4.7 Pin with Resistor)
- Cutter Size Material: 0.8/Steel
- Approval: ASTM F1055
- Approval: ASTM D2513
- Approval: ASTM D2683
- \*Approval: ASTM D3261

Please call for more information on availability, pricing, other sizes and dimensions.

<...>	Main Size (inch)	GFCP Part No.	GF Part No.	weight (lb)
	1 1/4 IPS	5757095	360 001 231	0.816
	1 1/4 IPS	10009386	360 003 119	0.838
	2 IPS	5757097	360 001 256	0.794
	2 IPS	10009393	360 003 121	0.882
	3 IPS	5757099	360 001 292	0.838
	4 IPS	5757100	360 001 323	0.926
*	6 IPS	5757102	360 001 359	1.190

Clamp Type	A (inch)	D (inch)	H (inch)	L (inch)	Box Qty
Under Clamp (A)	2.22	1.46	4.83	4.59	50
Underpart	2.22	1.46	4.83	4.58	50
Under Clamp (B)	2.22	1.46	5.06	4.50	40
Underpart	2.22	1.46	5.06	4.50	40
Under Clamp (C)	2.22	1.46	5.18	4.58	40
Under Clamp (D)	2.22	1.46	5.93	4.46	30
Under Clamp (E)	2.22	1.46	7.06	4.61	20



**ELECTROFUSION TAPPING TEE with SOCKET OUTLET**  
**PE2406/PE2708**  
**Outlet Size: 1/2" CTS**

- Pin Type: 4.7R (4.7 Pin with Resistor)
- Cutter Size Material: 0.8/Steel
- Approval: ASTM D2513
- Approval: ASTM F1055
- Approval: ASTM D2683

Please call for more information on availability, pricing, other sizes and dimensions.

Main Size (inch)	GFCP Part No.	GF Part No.	weight (lb)	Clamp Type	A (inch)	D (inch)	H (inch)	L (inch)	Box Qty
1 1/4 IPS	10011089	360 021 418	0.794	Under Clamp (A)	2.22	1.31	4.83	4.58	50
2 IPS	10010983	360 029 103	9.348	Under Clamp (B)	2.22	1.31	5.06	4.50	40
2 IPS	10011196	360 021 473	0.882	Under Clamp (B)	2.22	1.31	5.06	4.50	40
2 IPS	10011678	360 021 475	0.970	Underpart	2.22	1.31	5.06	4.50	40
3 IPS	10011102	360 004 323	0.860	Under Clamp (C)	2.22	1.31	5.18	4.58	40
4 IPS	10011107	360 004 324	0.948	Under Clamp (D)	2.22	1.31	5.93	4.46	18
6 IPS	10011114	360 004 325	1.257	Under Clamp (E)	2.22	1.31	7.06	4.46	20
8 IPS	10011657	360 021 673	0.816	Top Load (H)	2.22	1.31	4.14	4.60	40
8 IPS	10011620	360 021 674	0.816	Top Load (H)	2.22	1.31	4.14	4.50	40

# Tapping Tee with Butt Outlet & Brass Cutter



## ELECTROFUSION TAPPING TEE with BUTT OUTLET and BRASS CUTTER PE3408/PE4710 Outlet Size: 3/4" CTS

- Pin Type: 4.7R (4.7 Pin with Resistor)
- Cutter Size Material: 0.8/Brass
- Approval: ASTM D2513
- Approval: ASTM F1055
- Approval: ASTM D3261
- Approval: AWWA C906

Please call for more information on availability, pricing, other sizes and dimensions. The products listed are standard stocking options. However, GF Central Plastics offers thousands of different configurations as well as custom innovative structures.

Main Size (inch)	GFCP Part No.	GF Part No.	weight (lb)	Clamp Type	A (inch)	D (inch)	H (inch)	L (inch)	Box Qty
2 IPS	10004825	360 001 251	0.860	Under Clamp (A)	2.22	0.87	5.06	4.50	40
2 IPS	10009391	360 003 729	0.882	Underpart	2.22	0.87	5.06	4.50	40
3 IPS	10004780	360 001 289	0.904	Under Clamp (B)	2.22	0.87	5.18	4.58	40
4 IPS/DIPS	10004806	360 001 346	6.371	Under Clamp (C)	2.22	0.87	5.93	4.46	30
6 IPS/DIPS	10004826	360 001 381	1.257	Under Clamp (D)	2.22	0.87	7.06	4.61	20
8 IPS/DIPS	10004847	360 001 410	0.750	Top Load (H)	2.22	0.87	4.14	4.60	40



## ELECTROFUSION TAPPING TEE with BUTT OUTLET and BRASS CUTTER PE3408/PE4710, H-Top Load Outlet Size: 1/2" IPS

- Pin Type: 4.7R (4.7 Pin with Resistor)
- Cutter Size Material: 0.8/Brass
- Approval: ASTM D2513
- Approval: ASTM F1055
- Approval: ASTM D3261
- Approval: AWWA C906

Please call for more information on availability, pricing, other sizes and dimensions.

Main Size (inch)	GFCP Part No.	GF Part No.	weight (lb)	A (inch)	D (inch)	H (inch)	L (inch)	Box Qty
8 IPS/DIPS	10004846	360 001 409	0.926	2.22	0.84	4.14	4.60	40



## ELECTROFUSION TAPPING TEE with BUTT OUTLET and BRASS CUTTER PE3408/PE4710 Outlet Size: 1/2" CTS

- Pin Type: 4.7R (4.7 Pin with Resistor)
- Cutter Size Material: 0.8/Brass
- Approval: ASTM D2513
- Approval: ASTM F1055
- Approval: ASTM D3261
- Approval: AWWA C906

Please call for more information on availability, pricing, other sizes and dimensions.

Main Size (inch)	GFCP Part No.	GF Part No.	weight (lb)	Clamp Type	A (inch)	D (inch)	H (inch)	L (inch)	Box Qty
4 IPS/DIPS	10004824	360 001 345	1.036	Under Clamp (D)	2.22	0.62	5.93	4.46	30
6 IPS/DIPS	10004760	360 001 380	1.058	Under Clamp (E)	2.22	0.62	7.06	4.61	20



# Branch Saddles

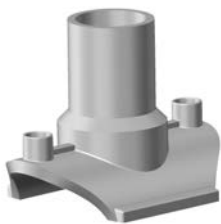


**ELECTROFUSION BRANCH SADDLE**  
**PE3408/PE4710**  
**Outlet Size: 8" DIPS**

- Outlet Wall: DR11
- Pin Type: 4.7S (4.7 Solid Pin)

Please call for more information on availability, pricing, other sizes and dimensions. The products listed are standard stocking options. However, GF Central Plastics offers thousands of different configurations as well as custom innovative structures.

Main Size (inch)	GFCP Part No.	GF weight Part No.	Box Qty
12 DIPS	<b>10009492</b>	<b>360 000 750</b>	7.937 1



**ELECTROFUSION BRANCH SADDLE**  
**PE2406/PE2708**  
**Outlet Size: 2" IPS**

- Outlet Wall: DR11
- Pin Type: 4.7R (4.7 Pin with Resistor)
- Approval: ASTM D2513
- Approval: ASTM F1055
- \*Approval: CSA B137.4.1
- \*\*Approval: ASTM D3261
- \*\*\*Approval: ASTM D3261; CSA B137.4.1

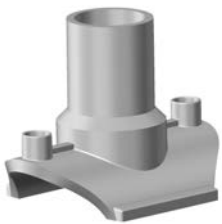
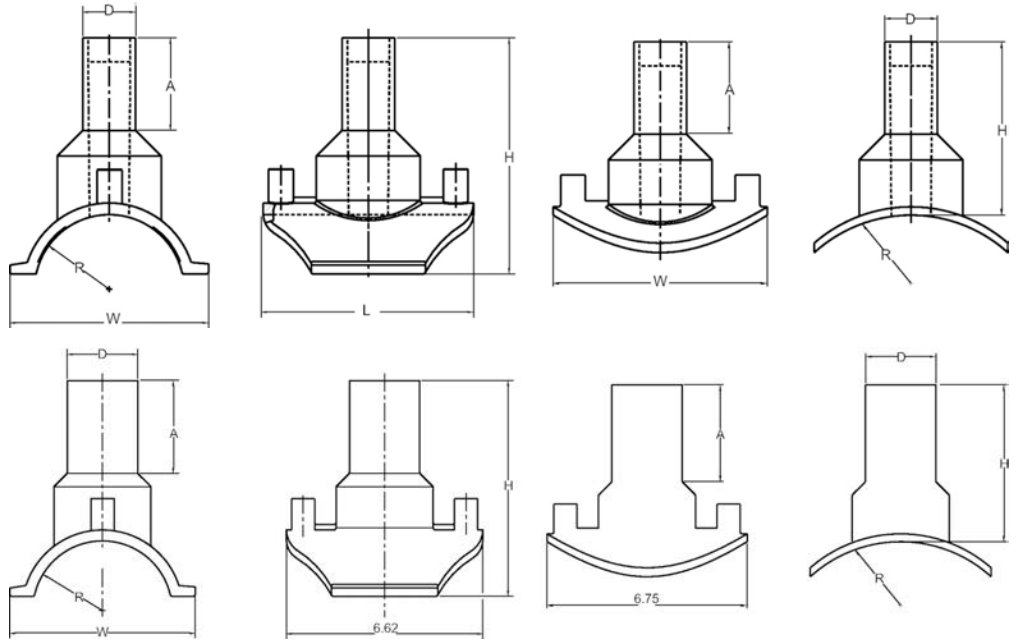
Please call for more information on availability, pricing, other sizes and dimensions.

<...>	Main Size (inch)	GFCP Part No.	GF weight Part No.	(lb)
***	2 IPS	<b>5757761</b>	<b>360 000 760</b>	0.926
*	3 IPS	<b>5757762</b>	<b>360 000 764</b>	0.926
***	4 IPS	<b>5757763</b>	<b>360 000 766</b>	1.080
**	4 IPS	<b>10010974</b>	<b>360 021 158</b>	2.006
***	6 IPS	<b>5757764</b>	<b>360 000 773</b>	1.257
**	6 IPS	<b>10010976</b>	<b>360 021 161</b>	0.683
	8 IPS	<b>10000823</b>	<b>360 000 786</b>	1.014

Clamp Type	A (inch)	D (inch)	H (inch)	W (inch)	L (inch)	Box Qty
Under Clamp (B)	3.28	2.37	6.65	3.59	6.62	40
Under Clamp (C)	3.28	2.37	6.65	4.60	6.62	40
Under Clamp (D)	3.28	2.37	7.72	6.26	6.62	30

table continued on the next page

Clamp Type	A (inch)	D (inch)	H (inch)	W (inch)	L (inch)	Box Qty
Underpart	3.28	2.37	7.72	6.26	6.62	10
Under Clamp (E)	3.28	2.37	8.72	8.68	6.62	30
Underpart	3.28	2.37	8.72	8.68	6.62	30
Top Load Clamp (H)	3.28	2.37	5.29	6.75	5.90	30



**ELECTROFUSION BRANCH SADDLE**  
**PE2406/PE2708**  
**Outlet Size: 4" IPS**

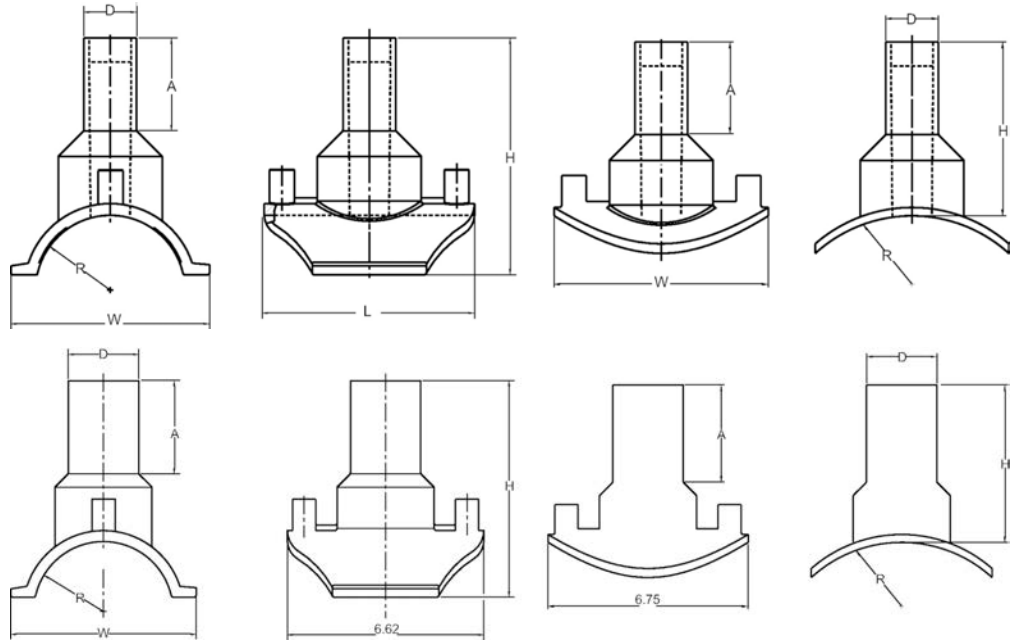
- Outlet Wall: DR11
- Pin Type: 4.7R (4.7 Pin with Resistor)
- Approval: ASTM D2513
- Approval: ASTM F1055
- Approval: ASTM D3261
- Approval: CSA B137.4.1

Please call for more information on availability, pricing, other sizes and dimensions.

Main Size (inch)	GFCP Part No.	GF Part No.	weight (lb)
4 IPS	5757124	360 000 769	2.094
6 IPS	5757125	360 000 776	3.726

table continued on the next page

Clamp Type	A (inch)	D (inch)	H (inch)	W (inch)	L (inch)	Box Qty
Under Clamp (D)	3.18	4.50	3.82	7.00	8.38	8
Under Clamp (E)	3.00	4.50	4.12	9.63	9.51	8



**ELECTROFUSION BRANCH SADDLE**  
**PE3408/PE4710**  
**Outlet Size: 2" IPS**

- Outlet Wall: DR11
- Pin Type: 4.7R (4.7 Pin with Resistor)
- Approval: ASTM D2513
- Approval: ASTM F1055
- Approval: ASTM D3261
- Approval: AWWA C906
- Approval: NSF-61

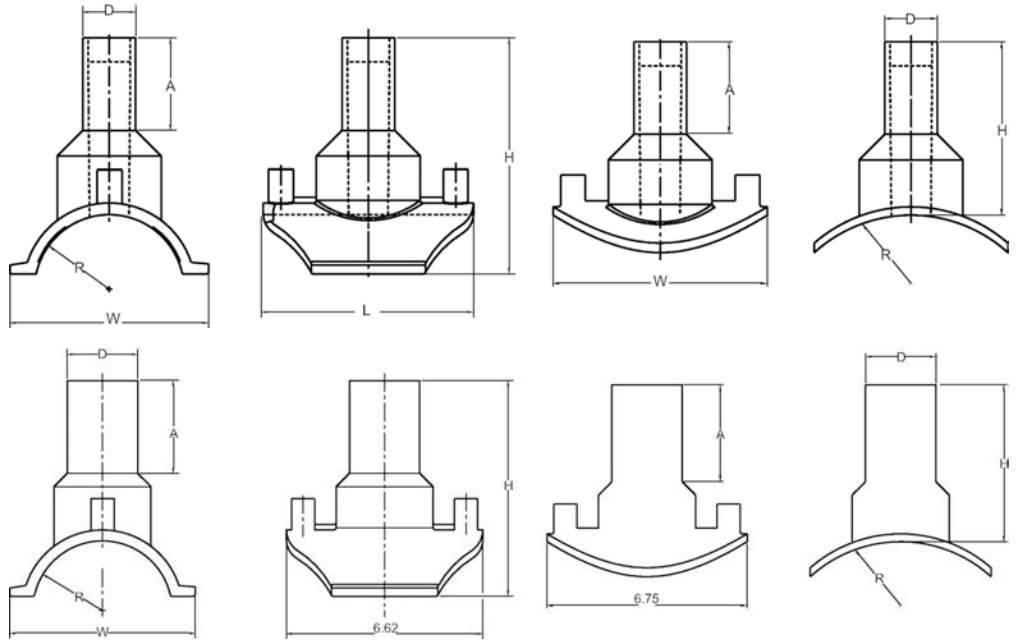
Please call for more information on availability, pricing, other sizes and dimensions.

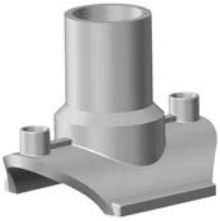
Main Size (inch)	GFCP Part No.	GF weight Part No.	(lb)
2 IPS	<b>10003536</b>	<b>360 000 759</b>	0.816
3 IPS	<b>10004525</b>	<b>360 000 763</b>	0.970
3 IPS	<b>10010428</b>	<b>360 003 705</b>	1.080
4 IPS	<b>10003547</b>	<b>360 000 772</b>	1.080
4 IPS	<b>10010429</b>	<b>360 021 157</b>	1.257
6 IPS	<b>10004543</b>	<b>360 000 780</b>	1.257
6 IPS	<b>10010430</b>	<b>360 021 160</b>	1.323
8 IPS	<b>10007711</b>	<b>360 000 785</b>	0.992

Clamp Type	A (inch)	D (inch)	H (inch)	W (inch)	L (inch)	Box Qty
Under Clamp (B)	3.28	2.37	6.65	3.59	6.62	40
Under Clamp (B)	3.28	2.37	6.65	4.60	6.62	40
Underpart	3.28	2.37	6.65	4.60	6.62	40
Under Clamp (D)	3.28	2.37	7.27	6.26	6.62	30

table continued on the next page

Clamp Type	A (inch)	D (inch)	H (inch)	W (inch)	L (inch)	Box Qty
Underpart	3.28	2.37	7.27	6.26	6.62	30
Under Clamp (E)	3.28	2.37	8.43	8.68	6.62	25
Underpart	3.28	2.37	8.43	8.68	6.62	30
Top Load Clamp (H)	3.28	2.37	5.29	6.75	5.90	30

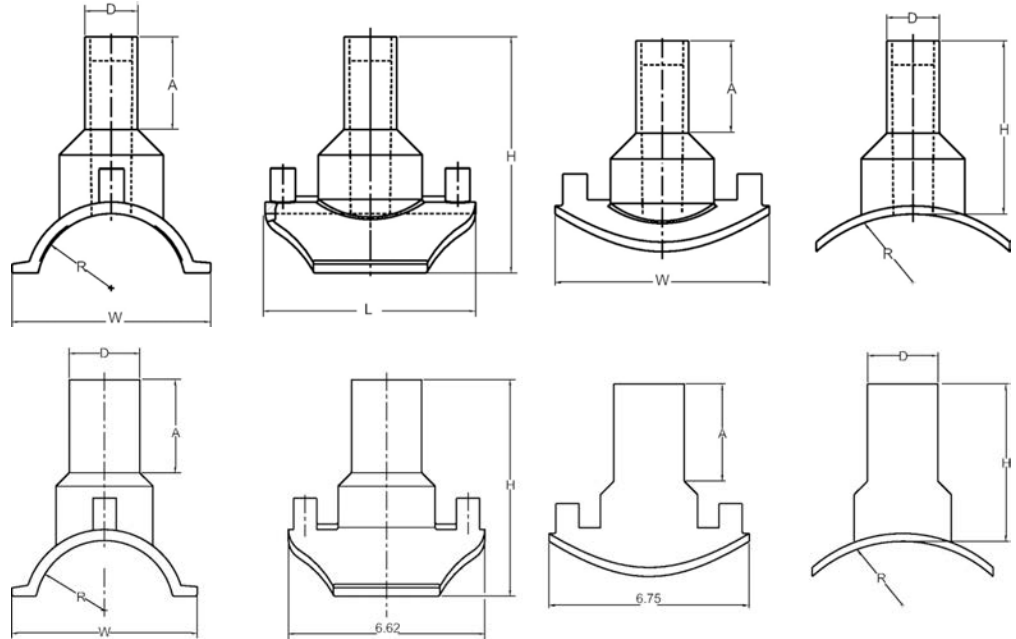




**ELECTROFUSION BRANCH SADDLE  
PE3408/PE4710, Top Clamp (H)**  
Outlet Size: 2" IPS

- Outlet Wall: DR11
  - Pin Type: 4.7S (4.7 Solid Pin)
  - Approval: AWWA C906
  - \*Approval: ASTM D2513/F1055/D3261; NSF-61
- Please call for more information on availability, pricing, other sizes and dimensions.

<...>	Main Size (inch)	GFCP Part No.	GF weight Part No.	(lb)	A (inch)	D (inch)	H (inch)	W (inch)	Box Qty
	8 DIPS	10004508	360 000 781	1.168	3.28	2.37	5.29	6.75	30
	10 DIPS	10004516	360 000 738	1.323	3.28	2.37	5.56	6.75	30
*	10 IPS	10004660	360 000 741	1.146	3.28	2.37	5.56	6.75	30
*	12 IPS	10003560	360 000 751	0.992	3.28	2.37	5.73	6.75	20
	12 DIPS	10004512	360 000 747	1.323	3.28	2.37	5.73	6.75	30



**ELECTROFUSION BRANCH SADDLE  
PE3408/PE4710, Underpart Clamp**  
Outlet Size: 4" IPS, Common Dimensions: A: 3.85", D: 4.50", H: 6.00"

- Outlet Wall: DR11
  - Pin Type: 4.7S (4.7 Solid Pin)
  - Full Pressure
  - Approval: ASTM D2513
  - Approval: ASTM F1055
  - Approval: ASTM D3261
  - Approval: AWWA C906
  - Approval: NSF-61
- Please call for more information on availability, pricing, other sizes and dimensions.

Main Size (inch)	GFCP Part No.	GF weight Part No.	(lb)	W (inch)	L (inch)	Box Qty
8 IPS	10005918	360 021 165	6.570	9.56	10.40	1
8 IPS	10006453	360 000 787	15.565	9.56	10.40	1
8 IPS	10014321	360 029 058	16.998	9.56	10.40	1
10 IPS	10006457	360 000 742	21.451	12.84	15.03	1
10 IPS	10006437	360 021 146	6.129	4.80	17.16	1
12 IPS	10006439	360 021 152	8.333	14.89	17.16	1
12 IPS	10006463	360 000 752	26.963			1
12 IPS	10013725	360 029 054	27.492			1



**ELECTROFUSION BRANCH SADDLE**

**PE3408/PE4710**

**Outlet Size: 4" IPS**

- Outlet Wall: DR11
- Pin Type: 4.7R (4.7 Pin with Resistor)
- Full Pressure
- Approval: ASTM D2513
- Approval: ASTM F1055
- Approval: ASTM D3261
- Approval: AWWA C906
- Approval: NSF-61

Please call for more information on availability, pricing, other sizes and dimensions.

Main Size (inch)	GFCP Part No.	GF Part No.	weight (lb)
4 IPS	<b>10010654</b>	<b>360 021 159</b>	2.116
4 IPS	<b>10014318</b>	<b>360 029 056</b>	1.962
6 IPS	<b>10010653</b>	<b>360 021 162</b>	3.858
6 IPS	<b>10014319</b>	<b>360 029 057</b>	3.858

Clamp Type	A (inch)	D (inch)	H (inch)	W (inch)	L (inch)	Box Qty
Underpart	3.85	4.50	6.00	7.00	8.38	8
Under Clamp (D)	3.85	4.50	6.00	7.00	8.38	4
Underpart	4.14	4.50	7.20	9.63	9.13	8
Under Clamp (E)	4.14	4.50	7.20	9.63	9.13	4



**ELECTROFUSION BRANCH SADDLE**

**PE3408/PE4710, Underpart Clamp**

**Outlet Size: 4" DIPS**

- Outlet Wall: DR11
- Pin Type: 4.7S (4.7 Solid Pin)
- Approval: ASTM D2513
- Approval: ASTM F1055
- Approval: ASTM D3261
- Approval: AWWA C906
- Approval: NSF-61

Please call for more information on availability, pricing, other sizes and dimensions.

Main Size (inch)	GFCP Part No.	GF Part No.	weight (lb)	A (inch)	D (inch)	H (inch)	W (inch)	L (inch)	Box Qty
8 DIPS	<b>10006441</b>	<b>360 021 163</b>	5.027						1
8 DIPS	<b>10006469</b>	<b>360 000 782</b>	17.218						1
10 DIPS	<b>10006445</b>	<b>360 021 144</b>	6.768						1
10 DIPS	<b>10006473</b>	<b>360 000 739</b>	20.900						1
12 DIPS	<b>10006449</b>	<b>360 021 150</b>	8.752						1
12 DIPS	<b>10006477</b>	<b>360 000 748</b>	25.904						1



**ELECTROFUSION BRANCH SADDLE**  
**PE3408/PE4710, Underpart Clamp**  
**Outlet Size: 6" IPS**

- Outlet Wall: DR11
- Pin Type: 4.7S (4.7 Solid Pin)
- Approval: ASTM D2513
- Approval: ASTM F1055
- Approval: ASTM D3261
- Approval: AWWA C906
- Approval: NSF-61

Please call for more information on availability, pricing, other sizes and dimensions.

Main Size (inch)	GFCP Part No.	GF weight Part No.	(lb)	A (inch)	D (inch)	H (inch)	W (inch)	L (inch)	Box Qty
8 IPS	10003795	360 021 167	5.401						1
8 IPS	10006455	360 000 788	16.799						1
10 IPS	10006438	360 021 147	7.893						1
10 IPS	10006459	360 000 745	27.646						1
12 IPS	10006440	360 021 153	9.612						1
12 IPS	10006465	360 000 753	27.999						1



**ELECTROFUSION BRANCH SADDLES**  
**PE3408/PE4710**  
**Outlet Size: 6" IPS**

- Outlet Wall: DR17
- Pin Type: 4.7S (4.7 Solid Pin)

Please call for more information on availability, pricing, other sizes and dimensions. The products listed are standard stocking options. However, GF Central Plastics offers thousands of different configurations as well as custom innovative structures.

Main Size (inch)	GFCP Part No.	GF weight Part No.	(lb)	Box Qty
8 IPS	5758407	360 000 789	6.614	1
10 IPS	10009202	360 000 744	6.989	1
12 IPS	10009203	360 000 754	6.371	1



**ELECTROFUSION BRANCH SADDLES**  
**PE3408/PE4710, Underpart Clamp**  
**Outlet Size: 6" DIPS**

- Outlet Wall: DR11
- Pin Type: 4.7S (4.7 Solid Pin)
- Approval: ASTM D2513
- Approval: ASTM F1055
- Approval: AWWA C906
- Approval: NSF-61

Please call for more information on availability, pricing, other sizes and dimensions.

Main Size (inch)	GFCP Part No.	GF weight Part No.	(lb)	A (inch)	D (inch)	H (inch)	W (inch)	L (inch)	Box Qty
8 DIPS	10006442	360 021 164	6.570						1
8 DIPS	10006471	360 000 783	19.004						1
10 DIPS	10006446	360 021 145	8.245						1
10 DIPS	10006475	360 000 740	22.355						1
12 DIPS	10006450	360 021 151	10.296						1



**ELECTROFUSION BRANCH SADDLES**

**PE3408/PE4710**

**Outlet Size: 8" IPS**

- Outlet Wall: DR11
- Pin Type: 4.7S (4.7 Solid Pin)
- Approval: ASTM D2513
- Approval: ASTM F1055
- Approval: ASTM D3261
- Approval: AWWA C906
- Approval: NSF-61

Please call for more information on availability, pricing, other sizes and dimensions. The products listed are standard stocking options. However, GF Central Plastics offers thousands of different configurations as well as custom innovative structures.

Main Size (inch)	GFCP Part No.	GF Part No.	weight (lb)
8 IPS	<b>5758390</b>	<b>360 000 790</b>	10.009
10 IPS	<b>10003796</b>	<b>360 021 149</b>	10.604
10 IPS	<b>10006461</b>	<b>360 000 745</b>	27.646
10 IPS	<b>10009200</b>	<b>360 000 746</b>	8.752
12 IPS	<b>10006467</b>	<b>360 000 756</b>	27.007
12 IPS	<b>10003849</b>	<b>360 021 155</b>	12.721
12 IPS	<b>10009201</b>	<b>360 000 755</b>	7.937

Clamp Type	A (inch)	D (inch)	H (inch)	W (inch)	L (inch)	Box Qty
Top Load Clamp (H)						1
						1
Underpart						1
Underpart						1
Underpart						1
						1
Top Load Clamp (H)						1



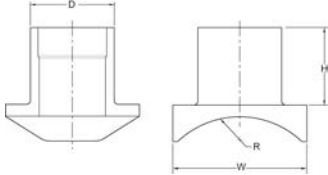
# Low Pressure Saddles



## ELECTROFUSION LOW PRESSURE BRANCH SADDLE PE3408/PE4710, DR17 Outlet Size: 6" IPS

- Outlet Wall: DR17
- Pin Type: 4.7S (4.7 Solid Pin)
- Low Pressure

Please call for more information on availability, pricing, other sizes and dimensions. The products listed are standard stocking options. However, GF Central Plastics offers thousands of different configurations as well as custom innovative structures.



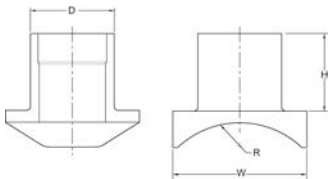
Main Size (inch)	GFCP Part No.	GF Part No.	weight (lb)	D (inch)	H (inch)	W (inch)	Box Qty
14 IPS	10009105	360 000 824	5.490	6.62	6.00	10.60	1
16 IPS	10009106	360 000 828	5.071	6.62	6.00	10.60	1
16 DIPS	10009131	360 000 827	5.997	6.62	6.00	10.60	1
18 IPS	10009107	360 000 832	5.004	6.62	6.00	10.60	1
20 IPS	10009108	360 000 834	4.982	6.62	6.00	10.60	1
22 IPS	10009136	360 000 836	5.622	6.62	6.00	10.60	1
24 IPS	10009109	360 000 839	5.622	6.62	6.00	10.60	1
24 DIPS	10010395	360 003 680	5.754	6.62	6.00	10.60	1
26 IPS	10009139	360 000 841	7.981	6.62	6.00	10.60	1
28 IPS	10009140	360 000 843	7.981	6.62	6.00	10.60	1
30 IPS	10009110	360 000 844	5.600	6.62	6.00	10.60	1
32 IPS	10009111	360 000 846	5.578	6.62	6.00	10.60	1
34 IPS	10009112	360 000 848	5.534	6.62	6.00	10.60	1
36 IPS	10009113	360 000 850	5.512	6.62	6.00	10.60	1
42 IPS	10009114	360 000 853	2.359	6.62	6.00	10.60	1
48 IPS	10009115	360 000 855	3.990	6.62	6.00	10.60	1



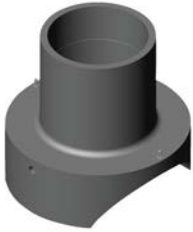
## ELECTROFUSION LOW PRESSURE BRANCH SADDLE PE3408/PE4710 Outlet Size: 6" IPS, DR11

- Outlet Wall: DR11
- Pin Type: 4.7S (4.7 Solid Pin)
- Low Pressure

Please call for more information on availability, pricing, other sizes and dimensions. The products listed are standard stocking options. However, GF Central Plastics offers thousands of different configurations as well as custom innovative structures.



Main Size (inch)	GFCP Part No.	GF Part No.	weight (lb)	Box Qty
14 IPS	10009529	360 000 823	7.496	1



**ELECTROFUSION LOW PRESSURE BRANCH SADDLE**

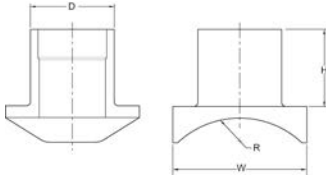
**PE3408/PE4710**

**Outlet Size: 8" DIPS**

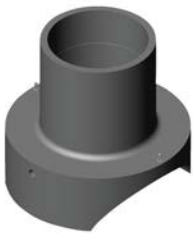
- Outlet Wall: DR11
- Pin Type: 4.7S (4.7 Solid Pin)
- Low Pressure

Note: These have a restricted pressure rating limited to 50 psi.

Please call for more information on availability, pricing, other sizes and dimensions. The products listed are standard stocking options. However, GF Central Plastics offers thousands of different configurations as well as custom innovative structures.



Main Size (inch)	GFCP Part No.	GF Part No.	weight (lb)	Box Qty
18 DIPS	10009352	360 000 831	7.496	1
42 DIPS	10009271	360 000 852	8.510	1



**ELECTROFUSION LOW PRESSURE BRANCH SADDLE**

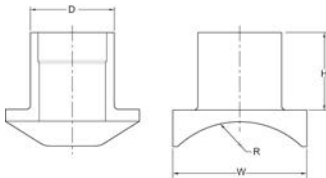
**PE3408/PE4710**

**Outlet Size: 8" IPS**

- Outlet Wall: DR11
- Pin Type: 4.7S (4.7 Solid Pin)
- Low Pressure

Note: These have a restricted pressure rating limited to 50 psi.

Please call for more information on availability, pricing, other sizes and dimensions. The products listed are standard stocking options. However, GF Central Plastics offers thousands of different configurations as well as custom innovative structures.



Main Size (inch)	GFCP Part No.	GF Part No.	weight (lb)	Box Qty
14	10009093	360 000 825	7.826	1
16	10009094	360 000 829	8.003	1
18	10009095	360 000 833	7.275	1
20	10009096	360 000 835	7.496	1
22	10009138	360 000 837	5.622	1
24	10009097	360 000 840	7.540	1
24	10009129	360 000 838	8.157	1
26	10009132	360 000 842	7.981	1
30	10009098	360 000 845	7.893	1
32	10009099	360 000 847	7.033	1
34	10009100	360 000 849	8.686	1
36	10009101	360 000 851	6.900	1
42	10009102	360 000 854	8.378	1
48	10009103	360 000 856	8.752	1

# Full Pressure Saddles



## ELECTROFUSION FULL PRESSURE BRANCH SADDLE PE3408/PE4710, P-Clamp Outlet Size: 8" DIPS

- Outlet Wall: DR11
- Pin Type: 4.7S (4.7 Solid Pin)
- Full Pressure

Please call for more information on availability, pricing, other sizes and dimensions. The products listed are standard stocking options. However, GF Central Plastics offers thousands of different configurations as well as custom innovative structures.

Main Size (inch)	GFCP Part No.	GF Part No.	weight (lb)	Box Qty
12 DIPS	10010224	360 021 175	12.302	1
18 DIPS	10009931	360 000 797	8.025	1
24 DIPS	10010030	360 021 177	7.981	1
42 DIPS	10009929	360 000 818	8.510	1



## ELECTROFUSION FULL PRESSURE BRANCH SADDLE PE3408/PE4710, P-Clamp Outlet Size: 8" IPS

- Outlet Wall: DR11
- Pin Type: 4.7S (4.7 Solid Pin)
- Full Pressure
- Approval: ASTM D2513
- Approval: ASTM F1055
- Approval: ASTM D3261

Please call for more information on availability, pricing, other sizes and dimensions. The products listed are standard stocking options. However, GF Central Plastics offers thousands of different configurations as well as custom innovative structures.

Main Size (inch)	GFCP Part No.	GF Part No.	weight (lb)	Box Qty
14 IPS	10009899	360 000 792	7.826	1
16 IPS	10009900	360 000 795	8.003	1
18 IPS	10009901	360 000 799	7.275	1
20 IPS	10009902	360 000 801	11.001	1
22 IPS	10009925	360 000 803	5.622	1
24 IPS	10009903	360 000 806	7.540	1
26 IPS	10009923	360 000 808	7.981	1
30 IPS	10009904	360 000 811	7.893	1
32 IPS	10009905	360 000 813	8.730	1
34 IPS	10009906	360 000 815	8.686	1
36 IPS	10009907	360 000 817	0.002	1
42 IPS	10009908	360 000 820	8.378	1
48 IPS	10009909	360 000 822	0.002	1
24 DIPS	10009921	360 000 804	0.002	1



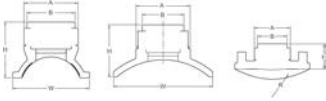
**ELECTROFUSION FULL PRESSURE BRANCH SADDLE**  
**PE3408/PE4710, P-Clamp**  
**Outlet Size: 6" IPS**

- Outlet Wall: DR11
- Pin Type: 4.7S (4.7 Solid Pin)
- Full Pressure
- Approval: ASTM D2513
- Approval: ASTM F1055
- Approval: ASTM D3261

Please call for more information on availability, pricing, other sizes and dimensions. The products listed are standard stocking options. However, GF Central Plastics offers thousands of different configurations as well as custom innovative structures.

Main Size (inch)	GFCP Part No.	GF Part No.	weight (lb)	Box Qty
14 IPS	10009910	360 003 135	7.83	1
16 IPS	10009911	360 003 136	5.07	1
16 DIPS	10009922	360 000 794	6.00	1
18 IPS	10009912	360 000 798	6.00	1
20 IPS	10009913	360 000 800	4.98	1
22 IPS	10009924	360 000 802	5.62	1
24 IPS	10009914	360 000 805	5.62	1
26 IPS	10009926	360 000 807	7.98	1
28 IPS	10009927	360 000 809	7.98	1
30 IPS	10009915	360 000 810	5.60	1
32 IPS	10009916	360 000 812	5.58	1
34 IPS	10009917	360 000 814	5.53	1
36 IPS	10009918	360 000 816	5.51	1
42 IPS	10009919	360 000 819	2.36	1
48 IPS	10009920	360 000 821	6.75	1

# Transition Saddles



**ELECTROFUSION FITTINGS: TRANSITION SADDLE**  
**PE3408/PE4710**  
**Outlet Size: 3/4"**

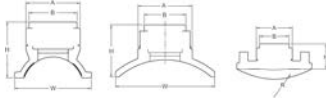
- Pin Type: 4.7R (4.7 Pin with Resistor)
- Approval: ASTM F1055
- Approval: AWWA C906
- Approval: NSF-61
- \*Approval: ANSI B1.20.1

Outlet Material: Brass 360 Alloy Compression Ring Material: Stainless 304

Please call for more information on availability, pricing, other sizes and dimensions.

<...>	Main Size (inch)	GFCP Part No.	GF Part No.	weight (lb)
	2 IPS; 3/4 CORP	<b>10004679</b>	<b>360 001 136</b>	2.161
*	2 IPS; 3/4 FPT	<b>10004681</b>	<b>360 001 137</b>	2.006
	3 IPS; 3/4 CORP	<b>10004693</b>	<b>360 001 151</b>	2.161
*	3 IPS; 3/4 FPT	<b>10004695</b>	<b>360 001 152</b>	2.315
	4 IPS/DIPS; 3/4 CORP	<b>10004709</b>	<b>360 001 166</b>	2.315
*	4 IPS/DIPS; 3/4 FPT	<b>10004711</b>	<b>360 001 167</b>	2.337
	6 IPS/DIPS 3/4 CORP	<b>10004734</b>	<b>360 001 183</b>	2.998
*	6 IPS/DIPS; 3/4 FPT	<b>10004736</b>	<b>360 001 184</b>	2.579
	8 IPS; 3/4 CORP	<b>10007753</b>	<b>360 001 208</b>	2.315
*	8 IPS; 3/4 FPT	<b>10007754</b>	<b>360 001 209</b>	2.006

Clamp Type	R (inch)	A (inch)	H (inch)	W (inch)	B (inch)	Box Qty
Under Clamp (B)	1.19	3.25	3.27	3.59	2.50	10
Under Clamp (B)	1.19	3.25	3.27	3.59	2.50	10
Under Clamp (C)	1.75	3.25	3.25	4.50	2.50	10
Under Clamp (C)	1.75	3.25	3.25	4.50	2.50	10
Under Clamp (G)	2.35	3.25	3.80	6.26	2.50	5
Under Clamp (G)	2.35	3.25	3.80	6.26	2.50	5
Under Clamp (G)	3.34	3.25	4.50	9.00	2.50	5
Under Clamp (G)	3.34	3.25	4.50	9.00	2.50	5
Top Load Clamp (H)	4.31	3.25	2.50	6.10	2.50	10
Top Load Clamp (H)	4.31	3.25	2.50	6.10	2.50	10



## ELECTROFUSION FITTINGS: TRANSITION SADDLE

PE3408/PE4710

Outlet Size: 3/4"

- Pin Type: 4.7R (4.7 Pin with Resistor)
- Approval: ASTM F1055
- Approval: AWWA C906
- Standard: ANSI B1.20.1
- Approval: NSF-61
- \*Approval: ASTM D2513

Outlet Material: Stainless 316 Compression Ring Material: Stainless 304

Please call for more information on availability, pricing, other sizes and dimensions.

<...>	Main Size (inch)	GFCP Part No.	GF Part No.	weight (lb)
	2 IPS; 3/4 FPT	10004667	360 001 138	2.116
*	2 IPS; 3/4 FPT	10010918	360 021 399	2.116
	2 IPS; 3/4 FPT	10010936	360 001 400	0.002
	3 IPS; 3/4 FPT	10004680	360 001 153	2.315
*	3 IPS; 3/4 FPT	10012075	360 001 406	0.002
	4 IPS/DIPS; 3/4 FPT	10004694	360 001 168	2.381
*	4 IPS/DIPS; 3/4 FPT	10012076	360 021 412	2.337
	6 IPS/DIPS; 3/4 FPT	10004710	360 001 185	2.535
*	6 IPS/DIPS; 3/4 FPT	10014766		2.540
	8 IPS; 3/4 FPT	10007759	360 001 210	2.579

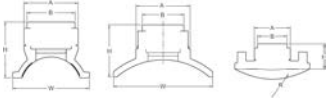
Clamp Type	R (inch)	A (inch)	H (inch)	W (inch)	B (inch)	Box Qty
Under Clamp (B)	1.19	3.25	3.18	3.59	2.50	10
Under Clamp (B)	1.19	3.25	3.18	3.59	2.50	10
Under Clamp (B)	1.19	3.25	3.18	3.59	2.50	10
Under Clamp (C)	1.25	3.25	3.18	4.60	2.50	10
Under Clamp (C)	1.75	3.25	3.18	4.60	2.50	10
Under Clamp (G)	2.35	3.25	3.80	6.26	2.50	5
Under Clamp (G)	2.35	3.25	3.80	6.26	2.50	5
Under Clamp (G)	3.34	3.25	4.96	8.68	2.50	5
Under Clamp (G)	3.34	3.25	4.96	8.68	2.50	5
Top Load Clamp (H)	4.31	3.25	2.96	5.92	2.50	10



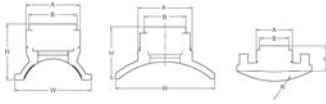
**ELECTROFUSION FITTINGS: TRANSITION SADDLE**  
**PE3408/PE4710, Top Load Clamp (H)**  
**Outlet Size: 3/4"**

- Pin Type: 4.7S (4.7 Solid Pin)
- Approval: ASTM F1055
- Approval: AWWA C906
- Approval: NSF-61
- \*Approval: ANSI B1.20.1
- \*\*Approval: ASTM D2513; ANSI B1.20.1

Outlet Material: Brass 360 Alloy  
 Compression Ring Material: Stainless 304  
 Please call for more information on availability, pricing, other sizes and dimensions.



<...>	Main Size (inch)	GFCP Part No.	GF weight Part No.	GF weight (lb)	R (inch)	A (inch)	H (inch)	W (inch)	B (inch)	Box Qty
	8 DIPS; 3/4 CORP	<b>10004725</b>	<b>360 001 200</b>	2.006	4.53	3.25	2.50	6.10	2.50	10
	10 IPS; 3/4 CORP	<b>10004648</b>	<b>360 001 110</b>	2.513	5.38	3.25	2.50	6.10	2.50	10
	10 DIPS; 3/4 CORP	<b>10004639</b>	<b>360 001 102</b>	2.756	5.55	3.25	2.50	6.10	2.50	10
*	10 IPS; 3/4 FPT	<b>10004732</b>	<b>360 001 111</b>	2.756	5.38	3.25	2.50	6.10	2.50	10
	12 DIPS; 3/4 CORP	<b>10004655</b>	<b>360 001 121</b>	2.381	6.60	3.25	2.50	6.10	2.50	10
	12 IPS; 3/4 CORP	<b>10006027</b>	<b>360 001 128</b>	2.557	6.38	3.25	2.50	6.10	2.50	10
**	12 IPS; 3/4 FPT	<b>10008920</b>	<b>360 001 129</b>	2.579	6.38	3.25	2.50	6.10	2.50	10



**ELECTROFUSION FITTINGS: TRANSITION SADDLE  
PE3408/PE4710, Top Load Clamp (H)  
Outlet Size: 3/4"**

- Pin Type: 4.7S (4.7 Solid Pin)
- Approval: ASTM F1055
- Approval: AWWA C906
- Standard: ANSI B1.20.1
- Approval: NSF-61

Outlet Material: Stainless 316 Compression Ring Material: Stainless 304

Please call for more information on availability, pricing, other sizes and dimensions.

Main Size (inch)	GFCP Part No.	GF weight Part No.	GF weight (lb)	R (inch)	A (inch)	H (inch)	W (inch)	B (inch)	Box Qty
8 DIPS; 3/4 FPT	<b>10004640</b>	<b>360 001 201</b>	2.381	4.53	3.25	1.94	6.10	2.50	15
10 DIPS; 3/4 FPT	<b>10004654</b>	<b>360 001 103</b>	2.646	5.55	3.25	2.21	6.10	2.50	15
10 IPS; 3/4 FPT	<b>10010396</b>	<b>360 003 708</b>	2.646	5.38	3.25	2.44	6.10	2.50	10
10 IPS; 3/4 FPT	<b>10013654</b>	<b>360 029 071</b>	2.646	5.38	3.25	2.44	6.10	2.50	10





**ELECTROFUSION FITTINGS: TRANSITION SADDLE**

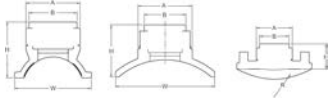
**PE3408/PE4710, Top Load Clamp (H)**

**Outlet Size: 1"**

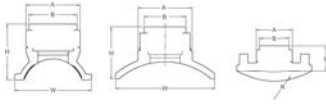
- Pin Type: 4.7S (4.7 Solid Pin)
- Approval: ASTM F1055
- Approval: AWWA C906
- Approval: NSF-61
- \*Approval: ANSI B1.20.1

Outlet Material: Brass 360 Alloy Compression Ring Material: Stainless 304

Please call for more information on availability, pricing, other sizes and dimensions.



<...>	Main Size (inch)	GF Part No.	GF Part No.	GF weight (lb)	R (inch)	A (inch)	H (inch)	W (inch)	B (inch)	Box Qty
	8 DIPS; 1 CORP	<b>10004644</b>	<b>360 001 202</b>	2.006	4.53	3.25	2.50	6.10	2.50	10
*	8 DIPS; 1 FPT	<b>10004731</b>	<b>360 001 203</b>	2.337	4.53	3.25	2.50	6.10	2.50	10
	8 IPS; 1 CORP	<b>10007529</b>	<b>360 001 212</b>	2.337	4.31	3.25	2.50	6.10	2.50	10
*	10 DIPS; 1 FPT	<b>10004641</b>	<b>360 001 105</b>	2.359	5.55	3.25	2.50	6.10	2.50	10
	10 IPS; 1 CORP	<b>10004647</b>	<b>360 001 112</b>	2.359	5.38	3.25	2.50	6.10	2.50	10
*	10 IPS; 1 FPT	<b>10004649</b>	<b>360 001 113</b>	2.469	5.38	3.25	2.50	6.10	2.50	10
	10 DIPS; 1 CORP	<b>10004730</b>	<b>360 001 104</b>	2.381	5.55	3.25	2.50	6.10	2.50	10
*	12 DIPS; 1 FPT	<b>10004642</b>	<b>360 001 123</b>	2.403	6.60	3.25	2.50	6.10	2.50	10
	12 DIPS; 1 CORP	<b>10004658</b>	<b>360 001 122</b>	2.227	6.60	3.25	2.50	6.10	2.50	10
*	12 IPS; 1 FPT	<b>10004662</b>	<b>360 001 131</b>	2.579	6.38	3.25	2.50	6.10	2.50	10
	12 IPS; 1 CORP	<b>10004661</b>	<b>360 001 130</b>	2.183	6.38	3.25	2.50	6.10	2.50	10
	16 DIPS; 1 CORP	<b>10014110</b>	<b>360 029 072</b>	2.006	8.70	3.25	2.50	6.10	2.50	10



## ELECTROFUSION FITTINGS: TRANSITION SADDLE

PE3408/PE4710

Outlet Size: 1"

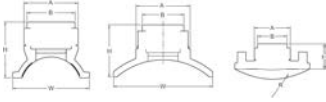
- Pin Type: 4.7R (4.7 Pin with Resistor)
- Approval: ASTM F1055
- Approval: AWWA C906
- Standard: ANSI B1.20.1
- Approval: NSF-61
- \*Approval: ASTM D2513; F1055; AWWA C906

Outlet Material: Stainless 316 Compression Ring Material: Stainless 304

Please call for more information on availability, pricing, other sizes and dimensions. The products listed are standard stocking options. However, GF Central Plastics offers thousands of different configurations as well as custom innovative structures.

<...>	Main Size (inch)	GFCP Part No.	GF Part No.	GF weight (lb)
	2 IPS; 1 FPT	<b>10004670</b>	<b>360 001 141</b>	1.808
*	3 IPS; 1 FPT	<b>10012661</b>	<b>360 021 408</b>	2.050
	3 IPS; 1 FPT	<b>10004683</b>	<b>360 001 156</b>	2.050
	4 IPS/DIPS; 1 FPT	<b>10004697</b>	<b>360 001 171</b>	2.006
	6 IPS/DIPS; 1 FPT	<b>10004714</b>	<b>360 001 188</b>	1.830
	8 IPS; 1 FPT	<b>10007760</b>	<b>360 001 214</b>	2.006

Clamp Type	R (inch)	A (inch)	H (inch)	W (inch)	B (inch)	Box Qty
Under Clamp (B)	1.19	3.25	3.25	3.59	2.88	10
Under Clamp (C)	1.75	3.25	3.25	4.50	2.88	10
Under Clamp (C)	1.75	3.25	3.25	4.50	2.88	10
Under Clamp (G)	2.35	3.25	3.80	6.26	2.88	5
Under Clamp (G)	3.34	3.25	4.50	9.00	2.88	5
Top Load Clamp (H)	4.31	3.25	2.50	6.10	2.88	10



## ELECTROFUSION FITTINGS: TRANSITION SADDLE

**PE3408/PE4710**

**Outlet Size: 1"**

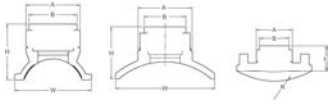
- Pin Type: 4.7R (4.7 Pin with Resistor)
- Approval: ASTM F1055
- Approval: AWWA C906
- Approval: NSF-61
- \*Approval: ANSI B1.20.1

Outlet Material: Brass 360 Alloy Compression Ring Material: Stainless 304

Please call for more information on availability, pricing, other sizes and dimensions. The products listed are standard stocking options. However, GF Central Plastics offers thousands of different configurations as well as custom innovative structures.

<...>	Main Size (inch)	GFCP Part No.	GF Part No.	weight (lb)
	2 IPS; 1 CORP	<b>10004682</b>	<b>360 001 139</b>	2.006
*	2 IPS; 1 FPT	<b>10004684</b>	<b>360 001 140</b>	2.006
	2 IPS; 1 ACME	<b>10008052</b>	<b>360 021 401</b>	2.006
*	3 IPS; 1 FPT	<b>10004698</b>	<b>360 001 155</b>	2.006
	3 IPS; 1 ACME	<b>10008054</b>	<b>360 021 407</b>	2.006
	4 IPS/DIPS; 1 CORP	<b>10004713</b>	<b>360 001 169</b>	2.227
	3 IPS; 1 CORP	<b>10004696</b>	<b>360 001 154</b>	1.940
*	4 IPS/DIPS; 1 FPT	<b>10004715</b>	<b>360 001 170</b>	2.183
	6 IPS/DIPS; 1 CORP	<b>10004737</b>	<b>360 001 186</b>	2.381
*	6 IPS/DIPS; 1 FPT	<b>10004739</b>	<b>360 001 187</b>	2.425
*	8 IPS; 1 FPT	<b>10007755</b>	<b>360 001 213</b>	2.028
	8 IPS; 1 CORP	<b>10007757</b>	<b>360 001 211</b>	2.161

Clamp Type	R (inch)	A (inch)	H (inch)	W (inch)	B (inch)	Box Qty
Under Clamp (B)	1.19	3.25	3.25	3.59	2.50	10
Under Clamp (B)	1.19	3.25	3.25	3.59	2.50	10
Under Clamp (B)	1.19	3.25	3.25	3.59	2.50	10
Under Clamp (C)	1.75	3.25	3.25	4.50	2.50	10
Under Clamp (C)	1.75	3.25	3.25	4.50	2.50	10
Under Clamp (G)	2.35	3.25	3.80	6.26	2.50	5
Under Clamp (C)	1.75	3.25	3.25	4.50	2.50	10
Under Clamp (G)	2.35	3.25	3.25	6.26	2.50	5
Under Clamp (G)	3.34	3.25	4.50	9.00	2.50	5
Under Clamp (G)	3.34	3.25	4.50	9.00	2.50	5
Top Load Clamp (H)	4.31	3.25	2.50	6.10	2.50	10
Top Load Clamp (H)	4.31	3.25	2.50	6.10	2.50	10



**ELECTROFUSION FITTINGS: TRANSITION SADDLE**

**PE3408/PE4710, Top Load Clamp (H)**

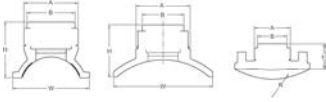
**Outlet Size: 1"**

- Pin Type: 4.7S (4.7 Solid Pin)
- Approval: ASTM F1055
- Approval: AWWA C906
- Standard: ANSI B1.20.1
- Approval: NSF-61

Outlet Material: Stainless 316 Compression Ring Material: Stainless 304

Please call for more information on availability, pricing, other sizes and dimensions. The products listed are standard stocking options. However, GF Central Plastics offers thousands of different configurations as well as custom innovative structures.

Main Size (inch)	GFCP Part No.	GF weight Part No.	R (lb)	A (inch)	H (inch)	W (inch)	B (inch)	Box Qty	
12 DIPS; 1 FPT	<b>10004657</b>	<b>360 001 124</b>	2.315	6.60	3.25	2.50	6.10	2.50	10
12 IPS; 1 FPT	<b>10004663</b>	<b>360 001 132</b>	2.315	6.38	3.25	2.50	6.10	2.50	10



**ELECTROFUSION FITTINGS: TRANSITION SADDLE**

**PE3408/PE4710**

**Outlet Size: 1 1/4"**

- Pin Type: 4.7R (4.7 Pin with Resistor)
- Approval: ASTM F1055
- Approval: AWWA C906
- Approval: NSF-61
- \*Approval: ANSI B1.20.1

Outlet Material: Brass 360 Alloy Compression Ring Material: Stainless 304

Please call for more information on availability, pricing, other sizes and dimensions. The products listed are standard stocking options. However, GF Central Plastics offers thousands of different configurations as well as custom innovative structures.

<...>	Main Size (inch)	GFCP Part No.	GF Part No.	weight (lb)
	2 IPS; 1 1/4 CORP	10004672	360 001 142	1.742
*	2 IPS; 1 1/4 FPT	10004687	360 001 143	2.006
	2 IPS; 1 1/4 ACME	10010325	360 021 402	2.006
	3 IPS; 1 1/4 CORP	10004685	360 001 157	1.742
*	3 IPS; 1 1/4 FPT	10004701	360 001 158	2.006
	3 IPS; 1 1/4 ACME	10010326	360 021 409	2.006
	4 IPS/DIPS; 1 1/4 CORP	10004675	360 001 172	1.874
*	4 IPS/DIPS; 1 1/4 FPT	10004718	360 001 173	1.852
	6 IPS/DIPS; 1 1/4 CORP	10004716	360 001 189	2.050
*	6 IPS/DIPS; 1 1/4 FPT	10004741	360 001 190	2.072
*	8 IPS; 1 1/4 FPT	10007756	360 001 215	2.359

Clamp Type	R (inch)	A (inch)	H (inch)	W (inch)	B (inch)	Box Qty
Under Clamp (B)	1.19	3.25	3.25	3.59	2.50	10
Under Clamp (B)	1.19	3.25	3.25	3.59	2.50	10
Under Clamp (B)	1.19	3.25	3.25	3.59	2.50	10
Under Clamp (C)	1.75	3.25	3.25	4.50	2.50	10
Under Clamp (C)	1.75	3.25	3.25	4.50	2.50	10
Under Clamp (C)	1.75	3.25	3.25	4.50	2.50	10
Under Clamp (G)	2.35	3.25	3.80	6.26	2.50	5
Under Clamp (G)	2.35	3.25	3.80	6.26	2.50	5
Under Clamp (G)	3.34	3.25	4.50	9.00	2.50	5
Under Clamp (G)	3.34	3.25	4.50	9.00	2.50	5
Top Load Clamp (H)	4.31	3.25	2.50	6.10	2.50	10

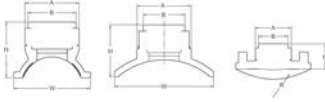


**ELECTROFUSION FITTINGS: TRANSITION SADDLE**  
**PE3408/PE4710, Top Load Clamp (H)**  
**Outlet Size: 1 1/4"**

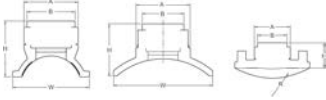
- Pin Type: 4.7S (4.7 Solid Pin)
- Approval: ASTM F1055
- Approval: AWWA C906
- Standard: ANSI B1.20.1
- Approval: NSF-61

Outlet Material: Brass 360 Alloy Compression Ring Material: Stainless 304

Please call for more information on availability, pricing, other sizes and dimensions. The products listed are standard stocking options. However, GF Central Plastics offers thousands of different configurations as well as custom innovative structures.



Main Size (inch)	GFCP Part No.	GF weight Part No.	R (inch)	A (inch)	H (inch)	W (inch)	B (inch)	Box Qty	
10 IPS; 1 1/4 FPT	<b>10004650</b>	<b>360 001 114</b>	2.359	5.38	3.25	2.50	6.10	2.50	10



**ELECTROFUSION FITTINGS: TRANSITION SADDLE**

**PE3408/PE4710**

**Outlet Size: 1 1/4"**

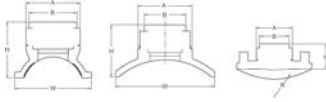
- Pin Type: 4.7R (4.7 Pin with Resistor)
- Approval: ASTM F1055
- Approval: AWWA C906
- Standard: ANSI B1.20.1
- Approval: NSF-61

Outlet Material: Stainless 316 Compression Ring Material: Stainless 304

Please call for more information on availability, pricing, other sizes and dimensions. The products listed are standard stocking options. However, GF Central Plastics offers thousands of different configurations as well as custom innovative structures.

Main Size (inch)	GFCP Part No.	GF Part No.
2 IPS; 1 1/4 FPT	<b>10004673</b>	<b>360 001 144</b>
3 IPS; 1 1/4 FPT	<b>10004686</b>	<b>360 001 159</b>
4 IPS/DIPS; 1 1/4 FPT	<b>10004700</b>	<b>360 001 174</b>
6 IPS/DIPS; 1 1/4 FPT	<b>10004717</b>	<b>360 001 191</b>
8 IPS; 1 1/4 FPT	<b>10007761</b>	<b>360 001 216</b>

Weight (lb)	Clamp Type	R (inch)	A (inch)	H (inch)	W (inch)	B (inch)	Box Qty
1.650	Under Clamp (B)	1.19	3.25	3.25	3.59	2.50	10
2.000	Under Clamp (C)	1.75	3.25	3.25	4.50	2.50	10
2.000	Under Clamp (G)	2.35	3.25	3.80	6.26	2.50	10
2.070	Under Clamp (G)	3.34	3.25	4.50	9.00	2.50	5
2.200	Top Load Clamp (H)	4.31	3.25	2.50	6.10	2.50	10



## ELECTROFUSION FITTINGS: TRANSITION SADDLE

PE3408/PE4710

Outlet Size: 1 1/2"

- Pin Type: 4.7R (4.7 Pin with Resistor)
- Approval: ASTM F1055
- Approval: AWWA C906
- Approval: NSF-61
- \*Approval: ANSI B1.20.1

Outlet Material: Brass 360 Alloy Compression Ring Material: Stainless 304

Please call for more information on availability, pricing, other sizes and dimensions. The products listed are standard stocking options. However, GF Central Plastics offers thousands of different configurations as well as custom innovative structures.

<...>	Main Size (inch)	GFCP Part No.	GF Part No.	weight (lb)
	2 IPS; 1 1/2 CORP	10004688	360 001 145	2.006
*	2 IPS; 1 1/2 FPT	10004690	360 001 146	2.006
	2 IPS; 1 1/2 ACME	10008051	360 021 403	2.006
	3 IPS; 1 1/2 CORP	10004702	360 001 160	1.742
*	3 IPS; 1 1/2 FPT	10004704	360 001 161	2.050
	3 IPS; 1 1/2 ACME	10008053	360 021 410	2.601
	4 IPS/DIPS; 1 1/2 CORP	10004719	360 001 175	1.852
*	4 IPS/DIPS; 1 1/2 CORP	10004721	360 001 176	2.138
	6 IPS/DIPS; 1 1/2 CORP	10004742	360 001 192	2.161
*	6 IPS/DIPS; 1 1/2 FPT	10004744	360 001 193	2.535
*	8 IPS; 1 1/2 FPT	10007752	360 001 218	2.161
	8 IPS; 1 1/2 CORP	10007758	360 001 217	1.896
	12 IPS; 1 1/2 FPT	10008055	360 003 709	2.094

Clamp Type	R (inch)	A (inch)	H (inch)	W (inch)	B (inch)	Box Qty
Under Clamp (B)	1.19	3.25	3.25	3.59	2.87	10
Under Clamp (B)	1.75	3.25	3.25	3.59	2.87	10
Under Clamp (B)	1.19	3.25	3.25	3.59	2.87	10
Under Clamp (C)	1.75	3.25	3.25	4.50	2.87	10
Under Clamp (C)	1.75	3.25	3.25	4.50	2.87	10
Under Clamp (C)	1.75	3.25	3.25	4.50	2.87	10
Under Clamp (G)	2.35	3.25	3.80	6.26	2.87	5
Under Clamp (G)	2.35	3.25	3.80	6.26	2.87	5
Under Clamp (G)	3.34	3.25	4.50	9.00	2.87	5
Under Clamp (G)	3.34	3.25	4.50	9.00	2.87	5
Top Load Clamp (H)	4.31	3.25	2.50	6.10	2.87	10
Top Load Clamp (H)	4.31	3.25	2.50	6.10	2.87	10
Top Load Clamp (H)	6.38	3.25	2.50	6.10	2.87	5





**ELECTROFUSION FITTINGS: TRANSITION SADDLE**

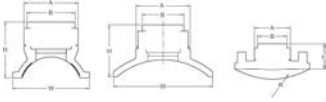
**PE3408/PE4710, Top Load Clamp (H)**

**Outlet Size: 1 1/2"**

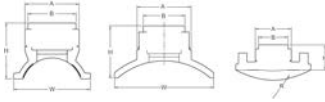
- Pin Type: 4.7S (4.7 Solid Pin)
- Approval: ASTM F1055
- Approval: AWWA C906
- Approval: NSF-61
- \*Approval: ANSI B1.20.1

Outlet Material: Brass 360 Alloy Compression Ring Material: Stainless 304

Please call for more information on availability, pricing, other sizes and dimensions. The products listed are standard stocking options. However, GF Central Plastics offers thousands of different configurations as well as custom innovative structures.



<...>	Main Size (inch)	GFCP Part No.	GF weight Part No.	GF weight (lb)	R (inch)	A (inch)	H (inch)	W (inch)	B (inch)	Box Qty
	8 DIPS; 1 1/2 CORP	<b>10004726</b>	<b>360 001 204</b>	2.028	4.53	3.25	2.50	6.10	2.87	10
*	8 DIPS; 1 1/2 FPT	<b>10004733</b>	<b>360 001 205</b>	2.006	4.53	3.25	2.50	6.10	2.87	10
	10 DIPS; 1 1/2 CORP	<b>10004643</b>	<b>360 001 106</b>	2.138	5.55	3.25	2.50	6.10	2.87	10
	10 IPS; 1 1/2 CORP	<b>10004646</b>	<b>360 001 115</b>	2.138	5.38	3.25	2.50	6.10	2.87	10
*	10 DIPS; 1 1/2 FPT	<b>10004652</b>	<b>360 001 107</b>	2.579	5.55	3.25	2.50	6.10	2.87	10
*	10 IPS; 1 1/2 FPT	<b>10007561</b>	<b>360 001 117</b>	2.579	5.38	3.25	2.50	6.10	2.87	10
*	10 IPS; 1 1/2 FPT	<b>10007627</b>	<b>360 001 116</b>	2.579	5.38	3.25	2.50	6.10	2.87	10
	12 DIPS; 1 1/2 CORP	<b>10004659</b>	<b>360 001 125</b>	2.161	6.60	3.25	2.50	6.10	2.87	10



## ELECTROFUSION FITTINGS: TRANSITION SADDLE

PE3408/PE4710

Outlet Size: 1 1/2"

- Pin Type: 4.7R (4.7 Pin with Resistor)
- Approval: ASTM F1055
- Approval: AWWA C906
- Standard: ANSI B1.20.1
- Approval: NSF-61

Outlet Material: Stainless 316 Compression Ring Material: Stainless 304

Please call for more information on availability, pricing, other sizes and dimensions. The products listed are standard stocking options. However, GF Central Plastics offers thousands of different configurations as well as custom innovative structures.

Main Size (inch)	GFCP Part No.	GF weight Part No.	GF weight (lb)
2 IPS; 1 1/2 FPT	10004676	360 001 147	1.896
3 IPS; 1 1/2 FPT	10004689	360 001 162	1.896
4 IPS/DIPS; 1 1/2 FPT	10004703	360 001 177	2.161
6 IPS/DIPS; 1 1/2 FPT	10004720	360 001 194	2.535
8 IPS; 1 1/2 FPT	10004743	360 001 219	2.535

Clamp Type	R (inch)	A (inch)	H (inch)	W (inch)	B (inch)	Box Qty
Under Clamp (B)	1.19	3.25	3.25	3.59	2.87	10
Under Clamp (C)	1.75	3.25	3.25	4.50	2.87	10
Under Clamp (G)	2.35	3.25	3.80	6.26	2.87	5
Under Clamp (G)	2.34	3.25	4.50	9.00	2.87	5
Top Load Clamp (H)	4.31	3.25	2.50	6.10	2.87	5

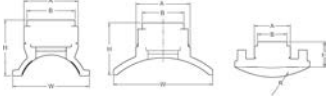


**ELECTROFUSION FITTINGS: TRANSITION SADDLE**  
**PE3408/PE4710, Top Load Clamp (H)**  
**Outlet Size: 1 1/2"**

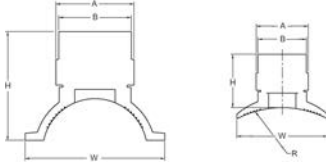
- Pin Type: 4.7S (4.7 Solid Pin)
- Approval: ASTM F1055
- Approval: AWWA C906
- Standard: ANSI B1.20.1
- Approval: NSF-61

Outlet Material: Stainless 316 Compression Ring Material: Stainless 304

Please call for more information on availability, pricing, other sizes and dimensions. The products listed are standard stocking options. However, GF Central Plastics offers thousands of different configurations as well as custom innovative structures.



Main Size (inch)	GFCP Part No.	GF weight Part No.	GF weight (lb)	R (inch)	A (inch)	H (inch)	W (inch)	B (inch)	Box Qty
10 IPS; 1 1/2 FPT	<b>10007561</b>	<b>360 001 117</b>	2.579	5.38	3.25	2.50	6.10	2.63	10



## ELECTROFUSION FITTINGS: TRANSITION SADDLE

PE3408/PE4710

Outlet Size: 2"

- Pin Type: 4.7R (4.7 Pin with Resistor)
- Approval: ASTM D2513
- Approval: ASTM F1055
- Approval: AWWA C906
- Standard: ANSI B1.20.1
- Approval: NSF-61
- \*Approval: ASTM F1055; AWWA C906; NSF-61

Outlet Material: Brass 360 Alloy Compression Ring Material: Stainless 304

Please call for more information on availability, pricing, other sizes and dimensions. The products listed are standard stocking options. However, GF Central Plastics offers thousands of different configurations as well as custom innovative structures.

<...>	Main Size (inch)	GFCP Part No.	GF Part No.	weight (lb)
	2 IPS; 2 FPT	10004678	360 001 149	2.006
	3 IPS; 2 FPT	10004692	360 001 164	2.006
*	4 IPS/DIPS; 2 CORP	10004705	360 001 178	2.734
	4 IPS/DIPS; 2 FPT	10004707	360 001 180	3.704
	6 IPS/DIPS; 2 FPT	10004722	360 001 198	4.497
*	6 IPS/DIPS; 2 CORP	10004746	360 001 195	3.792
*	8 IPS; 2 CORP	10007751	360 001 220	3.594
	8 IPS; 2 FPT	10007763	360 001 221	4.057

Clamp Type	R (inch)	A (inch)	H (inch)	W (inch)	B (inch)	Box Qty
Under Clamp (B)	1.19	3.50	3.27	3.59	3.25	10
Under Clamp (C)	1.75	3.50	4.12	4.60	3.25	5
Under Clamp (G)	2.35	3.50	3.80	6.26	3.25	5
Under Clamp (G)	2.35	3.50	3.80	6.26	3.25	5
Under Clamp (G)	3.34	3.50	4.50	9.00	3.25	5
Under Clamp (G)	3.34	3.50	4.50	9.00	3.25	5
Top Load Clamp (H)	4.31	3.50	2.50	6.10	3.25	5
Top Load Clamp (H)	4.31	3.50	2.50	6.10	3.25	5

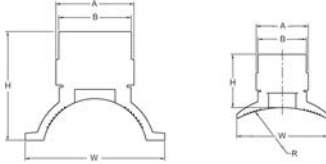


**ELECTROFUSION FITTINGS: TRANSITION SADDLE**  
**PE3408/PE4710, Top Load Clamp (H)**  
**Outlet Size: 2"**

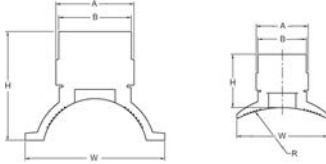
- Pin Type: 4.7S (4.7 Solid Pin)
- Approval: ASTM F1055
- Approval: AWWA C906
- Approval: NSF-61
- \*Approval: ANSI B1.20.1

Outlet Material: Brass 360 Alloy Compression Ring Material: Stainless 304

Please call for more information on availability, pricing, other sizes and dimensions. The products listed are standard stocking options. However, GF Central Plastics offers thousands of different configurations as well as custom innovative structures.



<...>	Main Size (inch)	GFCP Part No.	GF weight Part No.	(lb)	R (inch)	A (inch)	H (inch)	W (inch)	B (inch)	Box Qty
*	8 DIPS; 2 FPT	<b>10004656</b>	<b>360 001 207</b>	4.277	4.53	3.50	2.50	6.10	3.25	5
	8 DIPS; 2 CORP	<b>10004729</b>	<b>360 001 206</b>	3.858	4.53	3.50	2.50	6.10	3.25	5
	10 DIPS; 2 CORP	<b>10004645</b>	<b>360 001 108</b>	4.145	5.55	3.50	2.50	6.10	3.25	5
	10 IPS; 2 CORP	<b>10004651</b>	<b>360 001 118</b>	3.836	5.38	3.50	2.50	6.10	3.25	5
*	10 IPS; 2 FPT	<b>10004653</b>	<b>360 001 119</b>	4.431	5.38	3.50	2.50	6.10	3.25	5
	10 DIPS; 2 FPT	<b>10009837</b>	<b>360 001 109</b>	4.431	5.55	3.50	2.50	6.10	3.25	5
	12 IPS; 2 CORP	<b>10004664</b>	<b>360 001 133</b>	3.990	6.38	3.50	2.50	6.10	3.25	5
*	12 IPS; 2 FPT	<b>10004665</b>	<b>360 001 134</b>	2.227	6.38	3.50	2.50	6.10	3.25	5
*	12 DIPS; 2 FPT	<b>10004727</b>	<b>360 001 127</b>	2.271	6.60	3.50	2.50	6.10	3.25	5
	12 DIPS; 2 CORP	<b>10004728</b>	<b>360 001 126</b>	3.880	6.60	3.50	2.50	6.10	3.25	5
*	16 DIPS; 2 FPT	<b>10014111</b>	<b>360 029 073</b>	3.880	8.70	3.50	2.50	6.10	3.25	5



## ELECTROFUSION FITTINGS: TRANSITION SADDLE

PE3408/PE4710

Outlet Size: 2"

- Pin Type: 4.7R (4.7 Pin with Resistor)
- Approval: ASTM D2513
- Approval: ASTM F1055
- Approval: AWWA C906
- Standard: ANSI B1.20.1
- Approval: NSF-61

Outlet Material: Stainless 316 Compression Ring Material: Stainless 304

Please call for more information on availability, pricing, other sizes and dimensions. The products listed are standard stocking options. However, GF Central Plastics offers thousands of different configurations as well as custom innovative structures.

Main Size (inch)	GFCP Part No.	GF weight Part No.	GF weight (lb)
2 IPS; 2 FPT	10007108	360 001 148	1.874
2 IPS; 2 FPT	10010878	360 021 404	1.874
3 IPS; 2 FPT	10004691	360 001 163	3.505
3 IPS; 2 FPT	10010879	360 021 411	1.940
4 IPS/DIPS; 2 FPT	10004706	360 001 179	3.704
4 IPS/DIPS; 2 FPT	10010880	360 021 414	3.704
4 IPS/DIPS; 2 FPT	10010937	360 021 413	3.704
6 IPS/DIPS; 2 FPT	10004723	360 001 196	4.497
6 IPS/DIPS; 2 FPT	10010881	360 021 416	4.497
6 IPS/DIPS; 2 FPT	10010938	360 021 415	4.497
8 IPS; 2 FPT	10009044	360 001 222	4.057
10 IPS; 2 FPT	10010939	360 021 398	3.990
10 IPS/DIPS; 2 FPT	10014826		4.000

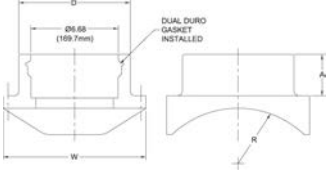
Clamp Type	R (inch)	A (inch)	H (inch)	W (inch)	B (inch)	Box Qty
Under Clamp (B)	1.19	3.50	3.25	3.59	3.25	5
Under Clamp (B)	1.19	3.50	3.25	3.59	3.25	5
Under Clamp (C)	1.75	3.50	3.25	4.50	3.25	5
Under Clamp (C)	1.75	3.50	3.25	4.50	3.25	5
Under Clamp (D)	2.34	3.50	3.80	6.26	3.25	5
Under Clamp (G)	2.34	3.50	3.80	6.26	3.25	5
Under Clamp (G)	2.34	3.50	3.80	6.26	3.25	5
Under Clamp (G)	3.34	3.50	4.50	9.00	3.25	5
Under Clamp (G)	3.34	3.50	4.50	9.00	3.25	5
Under Clamp (G)	3.34	3.50	4.50	9.00	3.25	5
Top Load Clamp (H)	4.31	3.50	2.50	6.10	3.25	5
Top Load Clamp (H)	5.38	3.50	2.50	6.10	3.25	5
Top Load Clamp (H)	5.50	3.50	2.50	6.10	3.25	5

# Gasketed Sewer Saddles



**ELECTROFUSION FITTINGS: GASKETED SEWER SADDLE**  
**with IPS Gasketed Outlet, T-Clamp (K)**  
**PE3408/PE4710**

- Pin Type: 4.7S (4.7 Solid Pin)
- 8" - 48" IPS and DIPS Base with IPS/Schedule 40 Gasket
- Please call for more information on availability, pricing, other sizes and dimensions.

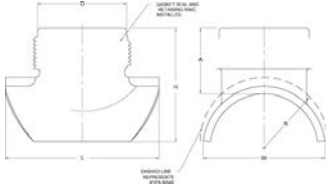


Size	GFCP Part No.	GF Part No.	weight (lb)	A (inch)	D (inch)	W (inch)	Box Qty
10 IPS, 6 IPS	10009117	360 000 947	7.011	3.00	8.63	10.60	1
12 IPS, 6 IPS	10009118	360 000 950	7.496	3.00	8.63	10.60	1
14 IPS, 6 IPS	10009119	360 000 953	7.253	3.00	8.63	10.60	1
16 IPS, 6 IPS	10009120	360 000 956	8.003	3.00	8.63	10.60	1
18 IPS, 6 IPS	10009121	360 000 959	7.253	3.00	8.63	10.60	1
24 IPS, 6 IPS	10009122	360 000 964	7.253	3.00	8.63	10.60	1
30 IPS, 6 IPS	10009123	360 000 966	7.253	3.00	8.63	10.60	1
32 IPS, 6 IPS	10009124	360 000 968	7.253	3.00	8.63	10.60	1
34 IPS, 6 IPS	10009125	360 000 970	7.253	3.00	8.63	10.60	1
36 IPS, 6 IPS	10009126	360 000 972	7.253	3.00	8.63	10.60	1
42 IPS, 6 IPS	10009127	360 000 974	7.253	3.00	8.63	10.60	1
48 IPS, 6 IPS	10009128	360 000 976	7.253	3.00	8.63	10.60	1
20 IPS, 6 IPS	10009130	360 003 707	7.253	3.00	8.63	10.60	1
8 IPS, 6 IPS	5758423	360 000 980	7.011	3.00	8.63	10.60	1
8 IPS, 6 IPS	5758438	360 000 981	0.002	3.00	8.63	10.60	1



**ELECTROFUSION FITTINGS: GASKETED SEWER SADDLE  
PE3408/PE4710, T-Clamp (K)  
DR35**

- Pin Type: 4.7S (4.7 Solid Pin)
- 6" and Multi-Base with IPS/Schedule 40 and PSM/DR35 Gaskets  
Please call for more information on availability, pricing, other sizes and dimensions.



Size	GFCP Part No.	GF Part No.	weight (lb)	A (inch)	D (inch)	W (inch)	Box Qty
10 IPS, 6 PSM	10009080	360 000 948	7.121	3.00	8.63	10.60	1
12 IPS, 6 PSM	10009081	360 000 951	7.496	3.00	8.63	10.60	1
16 IPS, 6 PSM	10009082	360 000 957	3.197	3.00	8.63	10.60	1
20 IPS, 6 PSM	10009083	360 000 961	6.107	3.00	8.63	10.60	1
24 IPS, 6 PSM	10009084	360 000 965	0.002	3.00	8.63	10.60	1
30 IPS, 6 PSM	10009085	360 000 967	7.011	3.00	8.63	10.60	1
32 IPS, 6 PSM	10009086	360 000 969	7.011	3.00	8.63	10.60	1
34 IPS, 6 PSM	10009087	360 000 971	7.011	3.00	8.63	10.60	1
36 IPS, 6 PSM	10009088	360 000 973	7.011	3.00	8.63	10.60	1
42 IPS, 6 IPS	10009089	360 000 975	7.011	3.00	8.63	10.60	1
48 IPS, 6 PSM	10009090	360 000 977	7.011	3.00	8.63	10.60	1
14 IPS, 6 PSM	10009091	360 000 954	6.526	3.00	8.63	10.60	1
18 IPS, 6 PSM	10009092	360 000 960	6.878	3.00	8.63	10.60	1
22 IPS, 6 PSM	10009134	360 000 962	0.002	3.00	8.63	10.60	1
6 IPS, 4 PSM	5750952	360 000 978	3.990	3.00	8.63	10.60	8
8 IPS, 6 PSM	5758378	360 000 982	8.510	3.00	8.63	10.60	1
8 IPS, 6 PSM	5758437	360 000 983	8.356	3.00	8.63	10.60	1



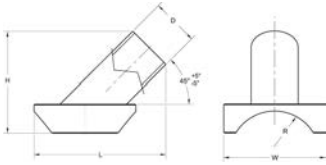
# WYEs



**ELECTROFUSION FITTINGS: WYE**  
**PE3408/PE4710, DR17, O- Clamp**  
**Outlet Size: 6" IPS, Main Size IPS**

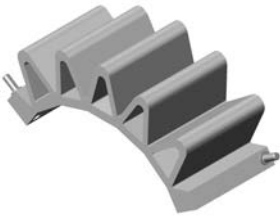
- Outlet Wall: DR17
  - Pin Type: 4.7S (4.7 Solid Pin)
- Note: Non-Pressure Applications Only

Please call for more information on availability, pricing, other sizes and dimensions. The products listed are standard stocking options. However, GF Central Plastics offers thousands of different configurations as well as custom innovative structures.



Main Size (inch)	GFCP Part No.	GF weight Part No.	(lb)	D (inch)	H (inch)	W (inch)	L (inch)	Box Qty
8	10002998	360 021 143	17.020	6.63	15.00	14.37	19.50	1
10	10003000	360 021 142	14.110	6.63	15.00	14.37	19.50	1

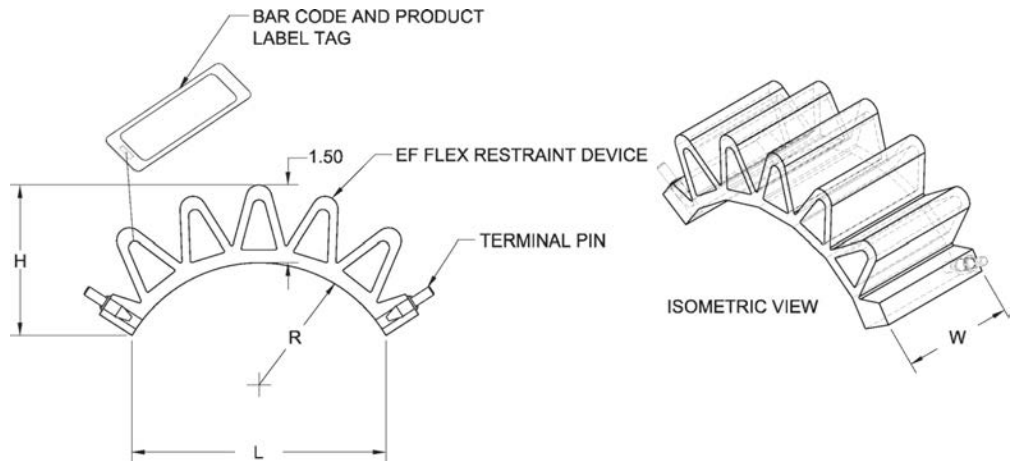
# Flex Restraints



**ELECTROFUSION FITTINGS: Flex Restraint**  
**Main Size 6" - 63", N-Ratchet Strap Clamp**  
**Axial Resistance - 9,000 lbs.**

- Pin Type: 4.7S (4.7 Solid Pin)
- Note: Works on solid wall pipe 6" IPS and larger.  
 Please call for more information on availability, pricing, other sizes and dimensions.

Description	GFCP Part No.	GF Part No.	GF weight (lb)	H (inch)	W (inch)	L (inch)	Box Qty
PE3408/PE4710	10004637	360 000 070	0.419	2.91	2.56	4.92	40
PE3408/PE4710	10012301	360 021 381	0.441	2.91	2.56	4.92	40
Polypropylene	10012442	360 021 380	0.419	2.91	2.56	4.92	40



# Index

Part No.	Page	Part No.	Page	Part No.	Page	Part No.	Page
10000202	4	10004579	2	10004682	58	10004790	22
10000204	4	10004580	2	10004683	57	10004792	31
10000205	4	10004581	4	10004684	58	10004794	23
10000207	4	10004582	15	10004685	60	10004806	37
10000208	4	10004587	22	10004686	62	10004808	34
10000210	4	10004588	18	10004687	60	10004810	22
10000211	4	10004592	23	10004688	63	10004820	31
10000213	4	10004594	16	10004689	65	10004823	31
10000214	4	10004595	9	10004690	63	10004824	37
10000216	4	10004598	14	10004691	69	10004825	37
10000218	4	10004604	16	10004692	67	10004826	37
10000353	3	10004610	14	10004693	52	10004828	22
10000354	3	10004611	16	10004694	53	10004845	22
10000355	3	10004613	14	10004695	52	10004846	37
10000356	3	10004614	16	10004696	58	10004847	37
10000357	3	10004616	15	10004697	57	10004858	31
10000358	2	10004617	16	10004698	58	10004867	6
10000359	2	10004618	18	10004700	62	10005918	44
10000360	2	10004622	14	10004701	60	10006024	14
10000361	2	10004625	9	10004702	63	10006027	54
10000362	2	10004627	2	10004703	65	10006028	23
10000363	2	10004628	9	10004704	63	10006029	23
10000477	10	10004629	9	10004705	67	10006437	44
10000479	10	10004630	9	10004706	69	10006438	46
10000481	10	10004637	73	10004707	67	10006439	44
10000518	10	10004639	54	10004709	52	10006440	46
10000823	40	10004640	55	10004710	53	10006441	45
10001613	1	10004641	56	10004711	52	10006442	46
10001682	1	10004642	56	10004713	58	10006445	45
10002998	72	10004643	64	10004714	57	10006446	46
10003000	72	10004644	56	10004715	58	10006449	45
10003085	22	10004645	68	10004716	60	10006450	46
10003171	26	10004646	64	10004717	62	10006453	44
10003355	31	10004647	56	10004718	60	10006455	46
10003452	31	10004648	54	10004719	63	10006457	44
10003536	42	10004649	56	10004720	65	10006459	46
10003537	18	10004650	61	10004721	63	10006461	47
10003547	42	10004651	68	10004722	67	10006463	44
10003560	44	10004652	64	10004723	69	10006465	46
10003561	15	10004653	68	10004725	54	10006467	47
10003701	31	10004654	55	10004726	64	10006469	45
10003795	46	10004655	54	10004727	68	10006471	46
10003796	47	10004656	68	10004728	68	10006473	45
10003798	22	10004657	59	10004729	68	10006475	46
10003816	9	10004658	56	10004730	56	10006477	45
10003849	47	10004659	64	10004731	56	10006643	22
10003869	9	10004660	44	10004732	54	10006644	18
10003970	2	10004661	56	10004733	64	10007108	69
10004508	44	10004662	56	10004734	52	10007238	9
10004512	44	10004663	59	10004736	52	10007328	31
10004516	44	10004664	68	10004737	58	10007349	31
10004525	42	10004665	68	10004739	58	10007380	22
10004543	42	10004667	53	10004741	60	10007392	9
10004561	6	10004670	57	10004742	63	10007505	15
10004563	6	10004672	60	10004743	65	10007529	56
10004564	6	10004673	62	10004744	63	10007561	64, 66
10004565	6	10004675	60	10004746	67	10007627	64
10004566	6	10004676	65	10004749	29	10007711	42
10004567	6	10004678	67	10004760	37	10007719	16
10004571	2	10004679	52	10004761	29	10007720	14
10004573	2	10004680	53	10004780	37	10007751	67
10004578	2	10004681	52	10004781	23	10007752	63

# Index

Part No.	Page	Part No.	Page	Part No.	Page	Part No.	Page
10007753	52	10009121	70	10009669	21	10010325	60
10007754	52	10009122	70	10009670	19	10010326	60
10007755	58	10009123	70	10009672	17	10010395	48
10007756	60	10009124	70	10009673	21	10010396	55
10007757	58	10009125	70	10009674	19	10010422	30
10007758	63	10009126	70	10009676	17	10010423	30
10007759	53	10009127	70	10009688	19	10010424	30
10007760	57	10009128	70	10009690	19	10010425	30
10007761	62	10009129	49	10009695	17	10010426	30
10007763	67	10009130	70	10009696	19	10010427	30
10008051	63	10009131	48	10009717	19	10010428	42
10008052	58	10009132	49	10009718	17	10010429	42
10008053	63	10009134	71	10009719	19	10010430	42
10008054	58	10009136	48	10009720	19	10010492	18
10008055	63	10009138	49	10009722	17	10010493	18
10008218	9	10009139	48	10009723	19	10010494	9
10008645	22	10009140	48	10009724	17	10010495	21
10008654	30	10009200	47	10009725	19	10010496	20
10008687	30	10009201	47	10009727	17	10010499	29
10008849	9	10009202	46	10009728	19	10010500	31
10008888	7	10009203	46	10009729	19	10010501	29
10008920	54	10009271	49	10009730	17	10010502	29
10009044	69	10009314	15	10009731	19	10010503	31
10009080	71	10009352	49	10009734	17	10010504	29
10009081	71	10009385	24	10009754	19	10010505	31
10009082	71	10009386	35	10009837	68	10010548	34
10009083	71	10009387	31	10009892	21	10010553	34
10009084	71	10009388	28	10009899	50	10010554	34
10009085	71	10009389	29	10009900	50	10010556	34
10009086	71	10009391	37	10009901	50	10010557	34
10009087	71	10009392	26	10009902	50	10010558	34
10009088	71	10009393	35	10009903	50	10010559	34
10009089	71	10009394	31	10009904	50	10010561	34
10009090	71	10009395	31	10009905	50	10010562	34
10009091	71	10009396	34	10009906	50	10010563	26
10009092	71	10009397	26	10009907	50	10010564	26
10009093	49	10009398	28	10009908	50	10010565	26
10009094	49	10009399	28	10009909	50	10010566	31
10009095	49	10009401	26	10009910	51	10010588	33
10009096	49	10009402	26	10009911	51	10010599	33
10009097	49	10009403	28	10009912	51	10010653	45
10009098	49	10009405	26	10009913	51	10010654	45
10009099	49	10009407	27	10009914	51	10010878	69
10009100	49	10009408	28	10009915	51	10010879	69
10009101	49	10009410	22	10009916	51	10010880	69
10009102	49	10009411	22	10009917	51	10010881	69
10009103	49	10009492	40	10009918	51	10010918	53
10009105	48	10009495	17	10009919	51	10010936	53
10009106	48	10009496	19	10009920	51	10010937	69
10009107	48	10009497	17	10009921	50	10010938	69
10009108	48	10009498	19	10009922	51	10010939	69
10009109	48	10009499	17	10009923	50	10010967	21
10009110	48	10009500	19	10009924	51	10010968	21
10009111	48	10009501	17	10009925	50	10010969	21
10009112	48	10009502	19	10009926	51	10010970	21
10009113	48	10009529	48	10009927	51	10010971	21
10009114	48	10009661	21	10009929	50	10010974	40
10009115	48	10009662	19	10009931	50	10010976	40
10009117	70	10009664	17	10010030	50	10010983	36
10009118	70	10009665	21	10010093	31	10011052	9
10009119	70	10009666	19	10010109	21	10011089	24, 36
10009120	70	10009668	17	10010224	50	10011090	25

# Index

Part No.	Page	Part No.	Page	Part No.	Page	Part No.	Page
10011092	25	10012886	7	360 000 798	51	360 000 863	7
10011097	24	10012912	11	360 000 799	50	360 000 864	6
10011099	25	10012913	11	360 000 800	51	360 000 865	7
10011102	36	10012991	11	360 000 801	50	360 000 866	6
10011103	24	10013266	31	360 000 802	51	360 000 867	7
10011104	24	10013267	31	360 000 803	50	360 000 868	6
10011105	25	10013654	55	360 000 804	50	360 000 869	6
10011107	36	10013725	44	360 000 805	51	360 000 870	7
10011108	29	10013860	7	360 000 806	50	360 000 871	6
10011110	24	10013867	7	360 000 807	51	360 000 872	7
10011111	35	10013868	7	360 000 808	50	360 000 873	8
10011112	25	10013869	7	360 000 809	51	360 000 874	6
10011114	36	10013870	7	360 000 810	51	360 000 875	7
10011115	29	10014110	56	360 000 811	50	360 000 876	6
10011116	24	10014111	68	360 000 812	51	360 000 877	7
10011117	24	10014208	15	360 000 813	50	360 000 879	6
10011118	25	10014318	45	360 000 814	51	360 000 880	7
10011190	17	10014319	45	360 000 815	50	360 000 881	8
10011196	36	10014321	44	360 000 816	51	360 000 883	2
10011197	24	10014766	53	360 000 817	50	360 000 884	1
10011339	2	10014826	69	360 000 818	50	360 000 885	2
10011532	25	360 000 070	73	360 000 819	51	360 000 886	1
10011606	25	360 000 738	44	360 000 820	50	360 000 887	2
10011620	36	360 000 739	45	360 000 821	51	360 000 888	1
10011657	36	360 000 740	46	360 000 822	50	360 000 889	2
10011662	22	360 000 741	44	360 000 823	48	360 000 890	1
10011663	22	360 000 742	44	360 000 824	48	360 000 891	2
10011678	36	360 000 744	46	360 000 825	49	360 000 892	1
10011777	17	360 000 745	46, 47	360 000 827	48	360 000 893	2
10011778	17	360 000 746	47	360 000 828	48	360 000 894	1
10011853	21	360 000 747	44	360 000 829	49	360 000 895	2
10012075	53	360 000 748	45	360 000 831	49	360 000 896	1
10012076	53	360 000 750	40	360 000 832	48	360 000 897	2
10012171	5	360 000 751	44	360 000 833	49	360 000 898	1
10012182	14	360 000 752	44	360 000 834	48	360 000 899	2
10012183	14	360 000 753	46	360 000 835	49	360 000 900	1
10012184	14	360 000 754	46	360 000 836	48	360 000 901	3
10012185	14	360 000 755	47	360 000 837	49	360 000 902	2
10012186	14	360 000 756	47	360 000 838	49	360 000 903	2
10012187	14	360 000 759	42	360 000 839	48	360 000 904	3
10012188	14	360 000 760	40	360 000 840	49	360 000 905	2
10012293	20	360 000 763	42	360 000 841	48	360 000 906	2
10012294	19	360 000 764	40	360 000 842	49	360 000 907	4
10012301	73	360 000 766	40	360 000 843	48	360 000 909	4
10012442	73	360 000 769	41	360 000 844	48	360 000 911	4
10012485	31	360 000 772	42	360 000 845	49	360 000 913	4
10012489	15	360 000 773	40	360 000 846	48	360 000 915	4
10012510	18	360 000 776	41	360 000 847	49	360 000 917	4
10012511	17	360 000 780	42	360 000 848	48	360 000 919	2
10012512	17	360 000 781	44	360 000 849	49	360 000 920	2
10012513	17	360 000 782	45	360 000 850	48	360 000 921	1
10012514	17	360 000 783	46	360 000 851	49	360 000 922	4
10012661	57	360 000 785	42	360 000 852	49	360 000 924	4
10012665	30	360 000 786	40	360 000 853	48	360 000 926	4
10012666	30	360 000 787	44	360 000 854	49	360 000 928	4
10012667	30	360 000 788	46	360 000 855	48	360 000 930	4
10012701	7	360 000 789	46	360 000 856	49	360 000 932	4
10012874	11	360 000 790	47	360 000 858	7	360 000 933	2
10012875	11	360 000 792	50	360 000 859	7	360 000 934	1
10012876	11	360 000 794	51	360 000 860	6	360 000 935	3
10012877	11	360 000 795	50	360 000 861	6	360 000 936	2
10012878	11	360 000 797	50	360 000 862	6	360 000 937	1

# Index

Part No.	Page	Part No.	Page	Part No.	Page	Part No.	Page
360 000 938	3	360 001 045	15	360 001 140	58	360 001 208	52
360 000 939	2	360 001 046	21	360 001 141	57	360 001 209	52
360 000 940	1	360 001 050	14, 16	360 001 142	60	360 001 210	53
360 000 941	1	360 001 053	15	360 001 143	60	360 001 211	58
360 000 942	2	360 001 054	20	360 001 144	62	360 001 212	56
360 000 943	3	360 001 061	9	360 001 145	63	360 001 213	58
360 000 944	2	360 001 062	10	360 001 146	63	360 001 214	57
360 000 945	1	360 001 063	10	360 001 147	65	360 001 215	60
360 000 947	70	360 001 064	9	360 001 148	69	360 001 216	62
360 000 948	71	360 001 065	10	360 001 149	67	360 001 217	63
360 000 950	70	360 001 066	9	360 001 151	52	360 001 218	63
360 000 951	71	360 001 067	9	360 001 152	52	360 001 219	65
360 000 953	70	360 001 068	10	360 001 153	53	360 001 220	67
360 000 954	71	360 001 069	9	360 001 154	58	360 001 221	67
360 000 956	70	360 001 070	10	360 001 155	58	360 001 222	69
360 000 957	71	360 001 071	9	360 001 156	57	360 001 225	29
360 000 959	70	360 001 072	10	360 001 157	60	360 001 226	24
360 000 960	71	360 001 073	9	360 001 158	60	360 001 231	35
360 000 961	71	360 001 074	10	360 001 159	62	360 001 232	30
360 000 962	71	360 001 075	9	360 001 160	63	360 001 233	26
360 000 964	70	360 001 076	10	360 001 161	63	360 001 238	31
360 000 965	71	360 001 077	10	360 001 162	65	360 001 240	26
360 000 966	70	360 001 078	9	360 001 163	69	360 001 243	31
360 000 967	71	360 001 079	10	360 001 164	67	360 001 244	28
360 000 968	70	360 001 080	9	360 001 166	52	360 001 246	29
360 000 969	71	360 001 081	9	360 001 167	52	360 001 247	24
360 000 970	70	360 001 102	54	360 001 168	53	360 001 251	37
360 000 971	71	360 001 103	55	360 001 169	58	360 001 252	25
360 000 972	70	360 001 104	56	360 001 170	58	360 001 256	35
360 000 973	71	360 001 105	56	360 001 171	57	360 001 258	23
360 000 974	70	360 001 106	64	360 001 172	60	360 001 259	26
360 000 975	71	360 001 107	64	360 001 173	60	360 001 267	22
360 000 976	70	360 001 108	68	360 001 174	62	360 001 270	26
360 000 977	71	360 001 109	68	360 001 175	63	360 001 272	26
360 000 978	71	360 001 110	54	360 001 176	63	360 001 276	22
360 000 980	70	360 001 111	54	360 001 177	65	360 001 277	31
360 000 981	70	360 001 112	56	360 001 178	67	360 001 278	28
360 000 982	71	360 001 113	56	360 001 179	69	360 001 282	28
360 000 983	71	360 001 114	61	360 001 180	67	360 001 289	37
360 000 991	15	360 001 115	64	360 001 183	52	360 001 290	25
360 000 995	15	360 001 116	64	360 001 184	52	360 001 292	35
360 001 001	21	360 001 117	64, 66	360 001 185	53	360 001 294	23
360 001 002	16	360 001 118	68	360 001 186	58	360 001 295	26
360 001 003	18	360 001 119	68	360 001 187	58	360 001 303	22
360 001 005	14	360 001 121	54	360 001 188	57	360 001 304	31
360 001 006	18	360 001 122	56	360 001 189	60	360 001 306	26
360 001 007	20	360 001 123	56	360 001 190	60	360 001 310	22
360 001 009	18	360 001 124	59	360 001 191	62	360 001 311	31
360 001 010	21	360 001 125	64	360 001 192	63	360 001 312	28
360 001 011	16	360 001 126	68	360 001 193	63	360 001 315	24
360 001 015	14	360 001 127	68	360 001 194	65	360 001 319	25
360 001 021	21	360 001 128	54	360 001 195	67	360 001 323	35
360 001 025	14	360 001 129	54	360 001 196	69	360 001 325	26
360 001 031	16	360 001 130	56	360 001 198	67	360 001 335	26
360 001 032	14	360 001 131	56	360 001 200	54	360 001 339	31
360 001 033	21	360 001 132	59	360 001 201	55	360 001 340	28
360 001 034	18	360 001 133	68	360 001 202	56	360 001 344	28
360 001 036	20	360 001 134	68	360 001 203	56	360 001 345	37
360 001 039	19	360 001 136	52	360 001 204	64	360 001 346	37
360 001 041	16	360 001 137	52	360 001 205	64	360 001 347	23
360 001 043	14	360 001 138	53	360 001 206	68	360 001 348	22
360 001 044	16	360 001 139	58	360 001 207	68	360 001 349	22

# Index

Part No.	Page	Part No.	Page	Part No.	Page	Part No.	Page
360 001 351	24	360 003 725	29	360 021 158	40	360 021 393	11
360 001 355	25	360 003 726	29	360 021 159	45	360 021 396	11
360 001 359	35	360 003 727	29	360 021 160	42	360 021 398	69
360 001 361	26	360 003 728	29	360 021 161	40	360 021 399	53
360 001 370	26	360 003 729	37	360 021 162	45	360 021 401	58
360 001 375	31	360 003 730	30	360 021 163	45	360 021 402	60
360 001 376	28	360 003 731	30	360 021 164	46	360 021 403	63
360 001 379	28	360 003 732	30	360 021 165	44	360 021 404	69
360 001 380	37	360 003 733	30	360 021 167	46	360 021 407	58
360 001 381	37	360 003 734	31	360 021 175	50	360 021 408	57
360 001 382	23	360 003 735	31	360 021 177	50	360 021 409	60
360 001 383	22	360 003 736	31	360 021 200	7	360 021 410	63
360 001 384	22	360 003 737	31	360 021 201	7	360 021 411	69
360 001 386	24	360 003 738	31	360 021 241	2	360 021 412	53
360 001 390	25	360 003 739	22	360 021 264	14	360 021 413	69
360 001 399	27	360 003 740	31	360 021 270	15	360 021 414	69
360 001 400	53	360 003 741	22	360 021 275	14	360 021 415	69
360 001 403	31	360 003 743	18	360 021 278	21	360 021 416	69
360 001 404	28	360 003 744	19	360 021 279	21	360 021 418	24, 36
360 001 406	53	360 003 745	19	360 021 281	18	360 021 425	25
360 001 408	28	360 003 746	19	360 021 284	20	360 021 429	25
360 001 409	37	360 003 748	18	360 021 285	20	360 021 445	22
360 001 410	37	360 003 749	17	360 021 286	14	360 021 446	31
360 001 411	23	360 003 750	17	360 021 288	21	360 021 449	26
360 001 412	22	360 003 751	17	360 021 289	21	360 021 451	26
360 001 413	22	360 004 294	6	360 021 291	17	360 021 460	22
360 002 881	19	360 004 296	33	360 021 293	19	360 021 461	34
360 002 963	34	360 004 297	33	360 021 295	19	360 021 462	34
360 002 964	34	360 004 298	33	360 021 296	14	360 021 473	36
360 003 119	35	360 004 299	34	360 021 299	21	360 021 475	36
360 003 120	26	360 004 300	34	360 021 300	21	360 021 481	24
360 003 121	35	360 004 323	36	360 021 302	17	360 021 482	24
360 003 122	28	360 004 324	36	360 021 304	19	360 021 490	25
360 003 126	17	360 004 325	36	360 021 306	19	360 021 491	25
360 003 127	17	360 004 329	24	360 021 307	14	360 021 494	30
360 003 128	17	360 004 332	26	360 021 310	21	360 021 513	31
360 003 135	51	360 004 333	26	360 021 311	21	360 021 515	26
360 003 136	51	360 004 334	26	360 021 313	17	360 021 517	33
360 003 145	30	360 004 335	27	360 021 314	17	360 021 532	34
360 003 443	17	360 004 336	28	360 021 316	19	360 021 533	34
360 003 444	19	360 004 337	28	360 021 319	19	360 021 534	34
360 003 446	17	360 004 338	28	360 021 320	14	360 021 538	24
360 003 447	17	360 004 339	28	360 021 323	15	360 021 539	24
360 003 448	17	360 004 341	21	360 021 324	21	360 021 541	25
360 003 450	19	360 004 342	20	360 021 325	21	360 021 554	26
360 003 468	19	360 004 343	19	360 021 326	21	360 021 556	26
360 003 469	17	360 004 344	19	360 021 327	21	360 021 565	34
360 003 470	19	360 004 345	19	360 021 330	17	360 021 566	34
360 003 471	17	360 021 099	5	360 021 331	17	360 021 567	31
360 003 472	19	360 021 142	72	360 021 332	17	360 021 575	29
360 003 473	17	360 021 143	72	360 021 333	19	360 021 579	24
360 003 474	19	360 021 144	45	360 021 334	14	360 021 585	35
360 003 475	17	360 021 145	46	360 021 360	9	360 021 586	25
360 003 480	17	360 021 146	44	360 021 371	9	360 021 606	26
360 003 680	48	360 021 147	46	360 021 380	73	360 021 608	26
360 003 700	6	360 021 149	47	360 021 381	73	360 021 610	26
360 003 705	42	360 021 150	45	360 021 382	11	360 021 622	34
360 003 707	70	360 021 151	46	360 021 383	11	360 021 623	34
360 003 708	55	360 021 152	44	360 021 384	11	360 021 624	31
360 003 709	63	360 021 153	46	360 021 385	11	360 021 627	30
360 003 715	30	360 021 155	47	360 021 388	11	360 021 630	29
360 003 724	29	360 021 157	42	360 021 391	11	360 021 633	24

# Index

Part No.	Page	Part No.	Page	Part No.	Page
360 021 634	24	5757070	10	5758438	70
360 021 639	25	5757071	10	5760001	1
360 021 658	27	5757072	10	5760004	1
360 021 662	31	5757073	10	5760005	1
360 021 666	34	5757074	10	5760006	1
360 021 667	34	5757081	20	5760008	1
360 021 670	30	5757083	28	5760010	1
360 021 673	36	5757084	26	5760012	1
360 021 674	36	5757086	28	5760019	2
360 021 681	25	5757087	26	5760022	2
360 021 693	31	5757088	26	5760023	2
360 021 695	27	5757095	35	5760024	2
360 021 702	30	5757097	35	5760026	2
360 021 706	22	5757099	35	5760028	2
360 022 945	10	5757100	35	5760030	2
360 029 054	44	5757102	35	5760300	6
360 029 056	45	5757109	21	5760303	6
360 029 057	45	5757110	21	5760305	6
360 029 058	44	5757111	21	5760307	6
360 029 059	7	5757112	21	5760309	6
360 029 060	7	5757113	21	5760311	6
360 029 061	7	5757114	20		
360 029 062	7	5757119	20		
360 029 063	7	5757121	20		
360 029 065	15	5757124	41		
360 029 071	55	5757125	41		
360 029 072	56	5757140	28		
360 029 073	68	5757141	26		
360 029 103	36	5757142	28		
360 060 184	9	5757143	26		
5750952	71	5757145	28		
5753228	8	5757146	33		
5753234	8	5757147	33		
5753247	7	5757148	34		
5753249	7	5757150	28		
5753251	7	5757151	28		
5753253	7	5757152	28		
5753271	7	5757153	28		
5753273	7	5757154	34		
5753277	7	5757157	28		
5753279	7	5757161	25		
5753281	7	5757162	25		
5757001	1	5757163	25		
5757007	1	5757164	25		
5757008	1	5757165	34		
5757009	1	5757166	34		
5757010	1	5757167	25		
5757030	26	5757248	24		
5757032	26	5757249	24		
5757033	26	5757250	24		
5757034	26	5757251	24		
5757036	26	5757253	24		
5757038	27	5757760	22		
5757042	1	5757761	40		
5757050	26	5757762	40		
5757052	26	5757763	40		
5757053	26	5757764	40		
5757054	26	5758378	71		
5757056	27	5758390	47		
5757058	27	5758407	46		
5757068	10	5758423	70		
5757069	10	5758437	71		