

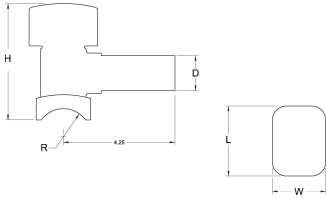
Data sheet

valid from: 6/10/21



TAPPING TEES: Series-B PE2708 IPS, .090, Stainless

- Approval: ASTM D2513/D3261
 - Approval: CSA B137.4
- Please call for more information on pricing, availability, other sizes and dimensions.



Size (inch)	GF Code	weight (lb)	H (inch)	W (inch)	D (inch)	L (inch)	Box Qty
1-1/4" IPS x 1/2" CTS	360 003 159	0.5	4	2	1	3	10
2" IPS x 1/2" CTS	360 023 225	0.7					80
2" IPS x 1/2" CTS (Emery)	360 002 673	0.6	4	2	1	3	10
3" IPS x 1/2" CTS (Emery)	360 002 707	0.5	4	2	1	3	10
4" IPS x 1/2" CTS	360 002 732	0.7					80
4" IPS x 1/2" CTS (Emery)	360 002 733	0.5	4	2	1	3	10
8" IPS x 1/2" CTS (Emery)	360 023 461	0.6					80

The technical data are not binding. They neither constitute expressly warranted characteristics nor guaranteed properties nor a guaranteed durability. They are subject to modification. Our General Terms of Sale apply.

Georg Fischer Piping Systems Ltd, Postfach, CH-8201 Schaffhausen/Switzerland

Phone +41 -(0)52-631 1111

e-mail: info.ps@georgfischer.com

Internet: <http://www.gfps.com>