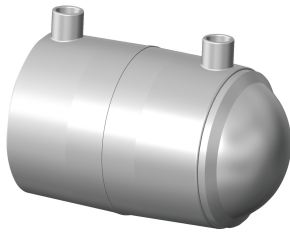


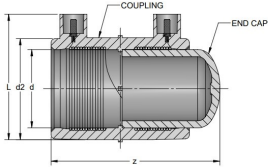
# Data sheet

valid from: 7/21/22



## ELECTROFUSION CAP: PE2708, 1/2"-2" IPS, 4.7R Pin

- Pin Type: 4.7R (4.7 Pin with Resistor)
- Approval: ASTM D2513
- Approval: ASTM F1055
- Approval: CSA B137.4.1 (indicated with \*)



Size (inch)	GF Code	weight (lb)	CSA	d (inch)	d2 (inch)	z (inch)	L (inch)	Box Qty
1/2	<b>360 000 859</b>	0.1		0.84	1.38	3.31	2.15	40
3/4	<b>360 021 200</b>	0.2	*	1.07	1.72	3.52	2.32	40
1	<b>360 000 863</b>	0.2	*	1.33	1.88	3.82	2.56	40
1 1/4	<b>360 000 867</b>	0.4	*	1.83	2.27	5.13	3.00	30
2	<b>360 029 059</b>	0.6	*	2.41	3.16	4.94	3.82	25

The technical data are not binding. They neither constitute expressly warranted characteristics nor guaranteed properties nor a guaranteed durability. They are subject to modification. Our General Terms of Sale apply.

Georg Fischer Piping Systems Ltd, Postfach, CH-8201 Schaffhausen/Switzerland

Phone +41 -(0)52-631 1111

e-mail: [info.ps@georgfischer.com](mailto:info.ps@georgfischer.com)

Internet: <http://www.gfps.com>