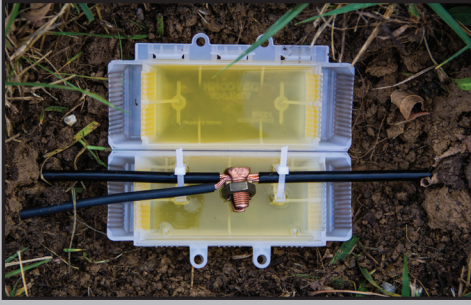


KING *INNOVATION*[®] **PRODUCT GUIDE**



Innovative products for Water, Gas and Cathodic Utility

800.624.4320 | kinginnovation.com | customer.service@ecmindustries.com | 42 N. Central Drive O'Fallon, MO 63366



CATHODIC

At King Innovation, protecting splices from harsh outdoor elements like water, temperature & corrosion is what we do best. In the cathodic market, we saw a need for an anode splice box to do just that, & our engineers developed the DryConn Visilock® with SmartGel® to meet this industry's requirements.



WATER UTILITY

King Innovation's interest in the water utility market was spiked when we realized contractors needed a better solution for waterproofing underground tracer wire splices. Our DryConn Direct Bury Lug Aqua ensures safe, waterproof & corrosion proof underground connections without having to cut the main line.



GAS UTILITY

King Innovation's interest in the gas utility market was spiked when we realized contractors needed a better solution for waterproofing underground tracer wire splices. Our DryConn Direct Bury Lug Yellow ensures safe, waterproof & corrosion proof underground connections without having to cut the main line maintaining the integrity of the communication signal.

UL SAFETY

The UL Listing is a standard of safety, a mark that guarantees reliable long-term waterproof connections. At King Innovation we maintain a research/development lab & manufacturing facility on-site in O'Fallon, MO to allow for rigorous testing & ongoing quality checks.

WHY IS UL SO IMPORTANT TO YOU?

Liability

Using a connector that does not meet the strict UL standard of quality means a huge liability risk. This risk is virtually eliminated with a UL Listed splice.

Quality

When working with electricity, an unreliable connector is just not an option. A UL listing means safe splices... which means safe irrigation, lighting & electrical systems.

Compliance

A UL connector ensures that you & your customers are in constant compliance with national & local electrical codes in wet, damp & direct bury applications.

WHAT DOES KING DO TO ENSURE QUALITY?

Testing

The thorough DryConn testing process ensures that these connectors can withstand 2,200 VAC while submerged, are heat aged & can endure cold... & that's just the beginning.

Manufacturing

A controlled manufacturing process plus the use of superior materials allows DryConn connectors to meet stringent quality requirements. All processes take place in O'Fallon, MO for full visibility & regulation.

3rd Party Audits

Each quarter King is visited by a UL auditor who reviews the manufacturing processes to ensure our quality connector "recipe" is intact.

CONTENTS

MARKETS WE SERVE	2
UL SAFETY	2
DRYCONN® GAS UTILITY WIRE CONNECTORS	
IDC Connectors, Yellow.....	4
King 6 Connectors, Yellow	4
Direct Bury Lugs, Yellow.....	4
Direct Bury Lugs Plus, Yellow	5
DBSR®, Yellow	5
Split Bolt Housing, Yellow	5
DBR/Y-600	6
DBO/B-600.....	6
Xtreme Waterproof Connector.....	6
VisiLock® with SmartGel®	6
DRYCONN® WATER UTILITY WIRE CONNECTORS	
IDC Connectors, Blue.....	7
King 6 Connectors, Blue.....	7
Direct Bury Lugs, Blue	7
Direct Bury Lugs Plus, Blue	8
DBSR®, Blue	8
Split Bolt Housing, Blue	8
PERMAGROUND® COPPER SPLIT BOLTS	9
PERMAGROUND® COPPER C CRIMPS	9
PERMAGROUND® GROUND CLAMPS	10
PERMAGROUND®	
ECONOMY GROUND ROD CLAMPS	10
DRYCONN® KSC (KING SHRINK CRIMP)	11
DRYCONN® DB POWER CONNECT	11
ACE CONNECTORS™	11
BLAZING SNAPLOC™ CONNECTORS	12
DRYCONN® CONNECTORS	12
TOOLS	13-17
KING GRIPS® & REPLACEMENT PARTS	14
MESH GRIPS	14
TEST & MEASURE	18-21
SIPHON KING®	
Siphon King Utility Pumps.....	22
Siphon King Replacement Parts	23
BALL BEARING PROBE	23
LIGHTING	24-25
ACCESSORIES	26
WIRE MANAGEMENT	27-32
MERCHANDISING DISPLAYS	33

CONTACT

42 N. Central Drive
O'Fallon, MO 63366

Phone: 800.624.4320

Fax: 262.649.7178

Email:

customer.service
@ecmindustries.com

Website:

kinginnovation.com

Technical Support:

877.771.8885



RESOURCES

KING
INNOVATION®
kinginnovation.com

GB
Gardner
Bender
gardnerbender.com

SPERRY
INSTRUMENTS
sperryinstruments.com

BERGEN
INDUSTRIES, INC.
bergeninc.com

CALTERM
calterm.com

ILSCO
connections—
matter
ilsco.com



IDC Connectors (Insulation Displacement Connectors)

- No need to strip wires
- For use with solid/stranded wire & steel core/copper clad steel
- Waterproof & corrosion proof
- Install service line without cutting the main line
- Manufacturer approved for direct bury
- Designed for low voltage tracer splices & cathodic applications up to 50V

SKU# 98305 IDC Yellow - Bag of 5

IDC Yellow
Min #14/Max #12



U.S. Pat. 9,496,626 & additional Patents Pending apply.
All other trademarks, U.S. & Foreign Patents Pending apply. All Rights Reserved.

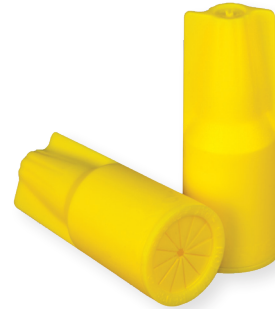


King 6 Connectors

- UL Listed 600V for dry, wet or above/below grade applications when used in an enclosure
- For use in Direct Bury applications when operating at 30V or less
- For use with solid/stranded wire & steel core/copper clad steel
- Temperature Rating: 105°C (221°F)
- Silicone Sealant: -45°F to 400°F
- Designed for tracer splices & cathodic applications

SKU# 31556 King 6 Yellow - Bag of 10

King 6 Yellow
Min #22/Max #8



MADE IN USA

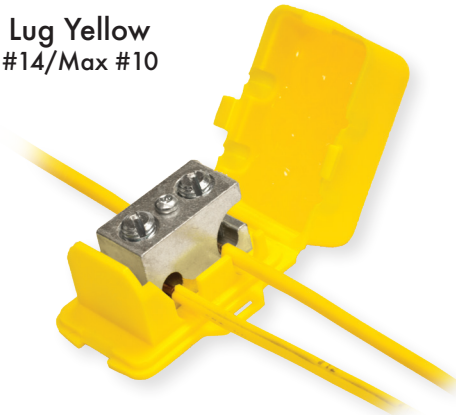


Direct Bury Lugs

- Waterproof & corrosion proof
- For use with solid/stranded wire & steel core/copper clad steel
- Pre-filled with dielectric silicone sealant that never hardens
- Install service line without cutting the main line
- Installs in one minute or less
- Manufacturer approved for direct bury
- Silicone Sealant Temperature Rating: -45°F to 400°F
- Designed for low voltage tracer splices and cathodic applications up to 50V

SKU# 90120 DB Lug Yellow - Bag of 5

DB Lug Yellow
Min #14/Max #10



Strip main tracer wire using the
TaskMaster Stripping Tool (TST-CJ29PRO)
(See page 15 for TaskMaster Stripping Tool)

U.S. Pat. 7,044,776, 7,677,932, 7,223,132, 7,507,126
7,988,503 & additional Patents Pending apply. All other
trademarks, U.S. & Foreign Patents Pending apply. All Rights Reserved.



Direct Bury Lugs Plus

- #14-8 Solid Copper
- #14-6 Stranded Copper
- #14-10 Steel Core Tracer Wire (CCS)

- Waterproof & corrosion proof
- For use with solid/stranded wire & steel core/copper clad steel
- Install service line without cutting the main line
- One piece for easy installation
- Installs in one minute or less
- Designed for use with solid tracer & cathodic wires
- High impact housing with user friendly design to prevent cuts or handling discomfort
- Use with low voltage tracer & cathodic lines under 50 volts
- Pre-filled with silicone
- Approved for direct bury

SKU# 90740 DB Lug Plus (Yellow) – Bag of 5

Strip main tracer wire using the TaskMaster Stripping Tool (TST-CJ29PRO) (See page 15 for TaskMaster Stripping Tool)

DB Lug Plus (Yellow)



U.S. Pat. 7,044,776, 7,677,932, 7,223,132, 7,507,126, 7,988,503 & additional Patents Pending apply. All other trademarks, U.S. & Foreign Patents apply. All Rights Reserved.



DBSR® Direct Bury with Strain Relief

- UL Listed 600V for dry, wet or above/below grade applications when used in an enclosure
- For use in Direct Bury applications when operating at 30V or less
- For use with solid & stranded wire
- Pre-filled with dielectric silicone sealant that never hardens
- Waterproof & corrosion proof
- Easy latch lid provides strain relief
- One piece for easy installation
- Silicone Sealant Temperature: -45°F to 400°F
- Designed for tracer splices & cathodic applications

SKU# 63315 DBSR Yellow – Bag of 10
SKU# 63350 DBSR Yellow – Box of 100

DBSR Yellow
Min #22/Max #6



U.S. Pat. 7,170,005, 6,815,616 & additional Patents Pending apply. All other trademarks, U.S. & Foreign Patents Pending apply. All Rights Reserved.

MADE IN USA

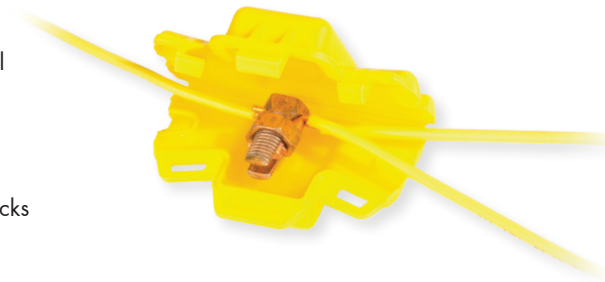


Split Bolt Housing

- Designed for low voltage tracer splices & cathodic applications up to 50V
- For use with solid/stranded wire & steel core/copper clad steel
- Use for making tap or branch splices
- Pre-filled with a non-toxic SmartGel® that eliminates hazmat requirements
- Waterproof & corrosion proof
- Eliminates the need for heat shrinks, primers, tapes & epoxy packs
- One piece for fast, easy installation
- Installs in one minute or less
- For use in outdoor or direct-burial locations
- Wire Range: #14 – #10 AWG

SKU# 69205 Split Bolt Housing Yellow – Bag of 10

Split Bolt*
Housing Yellow
Min #14/Max #10



*Split Bolt not included

U.S. Pat. 7,950,956 & additional Patents Pending apply. All other trademarks, U.S. & Foreign Patents Pending apply. All Rights Reserved.

MADE IN USA

GAS UTILITY WIRE CONNECTORS



DBR/Y-600 (Tube with Red/Yellow Gorilla Nut)
Direct Bury Silicone Filled Tube with Strain Relief

- UL 486D Listed & 600V rated
- For use with solid & stranded wire
- Waterproof & corrosion proof
- Snap fit lid provides strain relief
- UV & impact resistant
- Pre-filled with silicone that never hardens
- Perfect for Two-Wire Decoder Systems

SKU# 20230 DBR/Y-600 - Bag of 2
SKU# 20235 DBR/Y-600 - Box of 100



Min #22/Max #8

Red/Yellow Gorilla Nut also sold separately in 100 piece box (#68210).

(See Price List for details)



Xtreme Waterproof Connector

- UL Listed & 600V Rated
- Waterproof & corrosion proof
- Patented snap fit lid provides strain relief
- UV & impact resistant
- Excellent for above ground & direct bury applications
- Pre-filled with silicone that never hardens
- Two part system includes DryConn Black/Gray Waterproof Connector & silicone filled tube
- Perfect for long term submersible applications

SKU# 20260 Xtreme Waterproof Connector - Bag of 2
SKU# 20265 Xtreme Waterproof Connector - Box of 100



Min #22/Max #8



DBO/B-600 (Tube with Orange/Blue Gorilla Nut)
Direct Bury Silicone Filled Tube with Strain Relief

- Perfect for use in two-wire decoder systems and direct bury applications
- For use with solid & stranded wire
- UL 486D Listed for waterproof & direct bury connections
- Max 600V
- UV resistant for above ground applications
- Pre-filled with dielectric silicone sealant that never hardens
- Snap fit lid provides strain relief

SKU# 20635 DBO/B-600 - Box of 100



Gorilla Nut
Min #22/Max #8

Orange/Blue Gorilla Nut also sold separately in 100 piece box (#68110).
(See Price List for details)

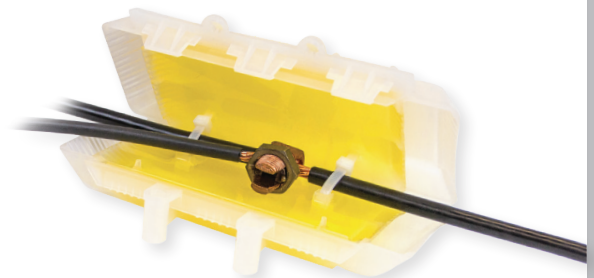
U.S. Pat. 8,431,824 & additional Patents Pending apply. All other trademarks, U.S. & Foreign Patents Pending apply. All Rights Reserved.



VisiLock® with SmartGel®

- Designed to protect cathodic splices from corrosion
- For use with solid & stranded wire
- Waterproof & corrosion proof
- Re-enterable, semi-transparent, encapsulated splice allows for a visible splice examination
- Locking mechanism centers splice in box
- Pre-filled with a non-toxic gel that eliminates hazmat requirements
- One piece for fast, easy installation
- Eliminates heat shrinks, primers, tapes & epoxy packs
- For making tap or branch splices on insulated cables rated up to 100V

SKU# 98010 VisiLock - Box of 1



Anode Splice Box

Main: #8-1/0 (.363"-.625" O.D.)
Tap: #12-#4 (.305"-.443" O.D.)

MADE IN USA

U.S. Patent 7,384,297, 7,431,611 & 7,883,608. All other trademarks, U.S. & Foreign Patents Pending apply. All Rights Reserved.



IDC Connectors (Insulation Displacement Connectors)

- No need to strip wires
- For use with solid/stranded wire & steel core/copper clad steel
- Waterproof & corrosion proof
- Install service line without cutting the main line
- Manufacturer approved for direct bury
- Designed for low voltage tracer splices & cathodic applications up to 50V

SKU# 98305 IDC Yellow - Bag of 5

IDC Aqua
Min #14/Max #12



U.S. Pat. 9,496,626 & additional Patents Pending apply. All other trademarks, U.S. & Foreign Patents Pending apply. All Rights Reserved.

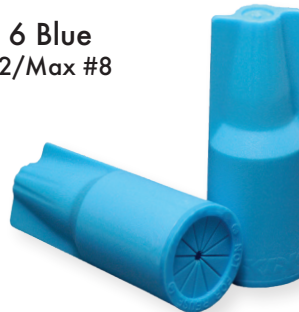


King 6 Connectors

- UL Listed 600V for dry, wet or above/below grade applications when used in an enclosure
- For use in Direct Bury applications when operating at 30V or less
- For use with solid/stranded wire & steel core/copper clad steel
- Temperature Rating: 105°C (221°F)
- Silicone Sealant: -45°F to 400°F
- Designed for tracer splices & cathodic applications

SKU# 10666 King 6 Blue - Bag of 10

King 6 Blue
Min #22/Max #8



MADE IN USA



Direct Bury Lugs

- Waterproof & corrosion proof
- For use with solid/stranded wire & steel core/copper clad steel
- Pre-filled with dielectric silicone sealant that never hardens
- Install service line without cutting the main line
- Installs in one minute or less
- Manufacturer approved for direct bury
- Silicone Sealant Temperature Rating: -45°F to 400°F
- Designed for low voltage tracer splices and cathodic applications up to 50V

SKU# 90220 DB Lug Aqua - Bag of 5

DB Lug Aqua
Min #14/Max #10



Strip main tracer wire using the TaskMaster Stripping Tool (TST-CJ29PRO)
(See page 15 for TaskMaster Stripping Tool)

U.S. Pat. 7,044,776, 7,677,932, 7,223,132, 7,507,126, 7,988,503 & additional Patents Pending apply. All other trademarks, U.S. & Foreign Patents Pending apply. All Rights Reserved.

WATER UTILITY WIRE CONNECTORS



Direct Bury Lugs Plus

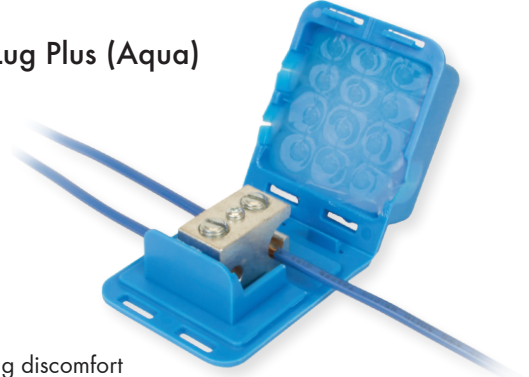
- #14-8 Solid Copper
- #14-6 Stranded Copper
- #14-10 Steel Core Tracer Wire (CCS)

- Waterproof & corrosion proof
- For use with solid/stranded wire & steel core/copper clad steel
- Install service line without cutting the main line
- One piece for easy installation
- Installs in one minute or less
- Designed for use with solid tracer & cathodic wires
- High impact housing with user friendly design to prevent cuts or handling discomfort
- Use with low voltage tracer & cathodic lines under 50 volts
- Pre-filled with silicone
- Approved for direct bury

SKU# 90750 DB Lug Plus (Aqua) – Bag of 5

Strip main tracer wire using the TaskMaster Stripping Tool (TST-CJ29PRO) (See page 13 for TaskMaster Stripping Tool)

DB Lug Plus (Aqua)



U.S. Pat. 7,044,776, 7,677,932, 7,223,132, 7,507,126, 7,988,503 & additional Patents Pending apply. All other trademarks, U.S. & Foreign Patents apply. All Rights Reserved.

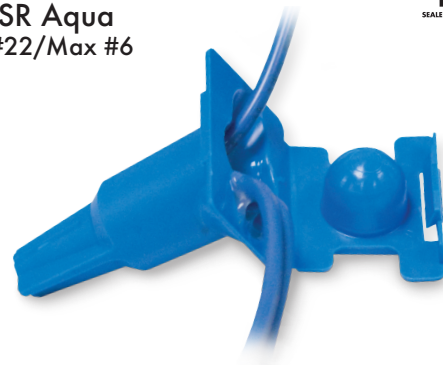


DBSR® Direct Bury with Strain Relief

- UL Listed 600V for dry, wet or above/below grade applications when used in an enclosure
- For use in Direct Bury applications when operating at 30V or less
- For use with solid & stranded wire
- Pre-filled with dielectric silicone sealant that never hardens
- Waterproof & corrosion proof
- Easy latch lid provides strain relief
- One piece for easy installation
- Silicone Sealant Temperature: -45°F to 400°F
- Designed for tracer splices & cathodic applications

SKU# 63615 DBSR Aqua – Bag of 10
SKU# 63650 DBSR Aqua – Box of 100

DBSR Aqua Min #22/Max #6



U.S. Pat. 7,170,005, 6,815,616 & additional Patents Pending apply. All other trademarks, U.S. & Foreign Patents Pending apply. All Rights Reserved.

MADE IN USA



Split Bolt Housing

- Designed for low voltage tracer splices & cathodic applications up to 50V
- For use with solid/stranded wire & steel core/copper clad steel
- Use for making tap or branch splices
- Pre-filled with a non-toxic SmartGel® that eliminates hazmat requirements
- Waterproof & corrosion proof
- Eliminates the need for heat shrinks, primers, tapes & epoxy packs
- One piece for fast, easy installation
- Installs in one minute or less
- For use in outdoor or direct-burial locations
- Wire Range: #14 – #10 AWG

SKU# 69105 Split Bolt Housing Aqua – Bag of 10

Split Bolt* Housing Aqua Min #14/Max #10



*Split Bolt not included

U.S. Pat. 7,950,956 & additional Patents Pending apply. All other trademarks, U.S. & Foreign Patents Pending apply. All Rights Reserved.

MADE IN USA

PermaGround® Copper Split Bolts



- Manufactured from high strength copper alloy
- Precision tooled threads
- UL 486 A/B Listed for power applications
- UL 467 Listed for Grounding and Bonding 500kcmil thru 8
- CSA Certified for Grounding and Bonding 250kcmil thru 8
- RUS Accepted 8 thru 1/0 AWG
- For use with copper conductor types: Solid, Compact, Compressed, Concentric, and copperweld
- Suitable for use in circuits rated 35KV or less, proper high voltage spacing and insulation techniques must be used
- Rated to 90° C



- SKU# IK-2 Copper Split Bolt, Conductor Range for Equal Main & Tap 2-6 Sol - 50/Box
- SKU# IK-3 Copper Split Bolt, Conductor Range for Equal Main & Tap 2 Sol - 6 Sol - 50/Box
- SKU# IK-4 Copper Split Bolt, Conductor Range for Equal Main & Tap 4 Sol - 8 Sol - 100/Box
- SKU# IK-6 Copper Split Bolt, Conductor Range for Equal Main & Tap 6 Sol - 10 Sol - 100/Box
- SKU# IK-8 Copper Split Bolt, Conductor Range for Equal Main & Tap 8-16 - 100/Box
- SKU# IK-10 Copper Split Bolt, Conductor Range for Equal Main & Tap 10-16 - 100/Box
- SKU# IK-1/0 Copper Split Bolt, Conductor Range for Equal Main & Tap 1/0-4 Sol - 50/Box
- SKU# IK-2/0 Copper Split Bolt, Conductor Range for Equal Main & Tap 2/0-2 Sol - 25/Box
- SKU# IK-3/0 Copper Split Bolt, Conductor Range for Equal Main & Tap 3/0-2 Sol - 25/Box

PermaGround® Compression Grounding Copper C Crimps



- Manufactured from high conductivity copper alloy
- UL 486 A/B Listed for power applications
- UL 467 Listed for Grounding and Bonding
- Clearly marked with wire size and die index
- Range taking
- Suitable for use in circuits rated 35KV or less, proper high voltage spacing and insulation techniques must be used
- Rated to 90° C

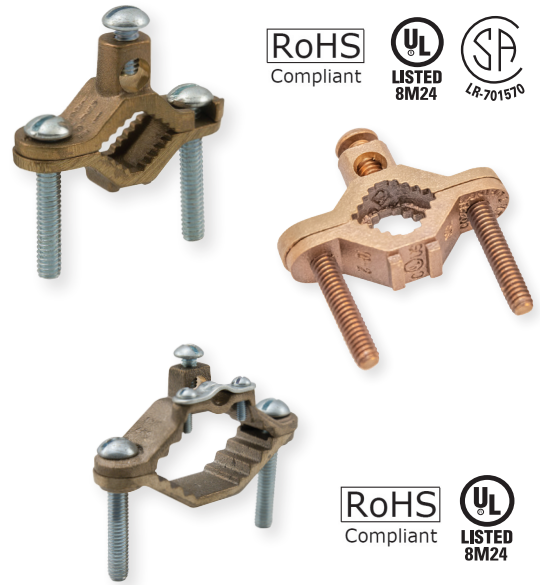


- SKU# ULT-1-Z Copper Grounding C Crimp, Main Conductor Range 10-12, Sol Tap Range 10-12 Sol - 100/Box
- SKU# ULT-2-Z Copper Grounding C Crimp, Main Conductor Range 8 Str-8, Sol Tap Range 8-10 Sol - 100/Box
- SKU# ULT-4-Z Copper Grounding C Crimp, Main Conductor Range 4-6, Sol Tap Range 6 Str-6 Sol - 100/Box
- SKU# ULT-5-Z Copper Grounding C Crimp, Main Conductor Range 4-6, Sol Tap Range 4 Str-4 Sol - 100/Box
- SKU# ULT-6-Z Copper Grounding C Crimp, Main Conductor Range 2 Str-2, Sol Tap Range 4-8 Sol - 100/Box
- SKU# ULT-7-Z Copper Grounding C Crimp, Main Conductor Range 2 Str-2, Sol Tap Range 2 Str-2 Sol - 100/Box
- SKU# ULT-8-Z Copper Grounding C Crimp, Main Conductor Range 2/0-1/0, Sol Tap Range 2-8 Sol - 50/Box
- SKU# ULT-9-Z Copper Grounding C Crimp, Main Conductor Range 2/0-1/0, Sol Tap Range 2/0-1/0 - 50/Box
- SKU# ULT-11-Z Copper Grounding C Crimp, Main Conductor Range 4/0-3/0, Sol Tap Range 2/0-1/0 Sol - 25/Box
- SKU# ULT-12-Z Copper Grounding C Crimp, Main Conductor Range 4/0-3/0, Sol Tap Range 4/0-3/0 Sol - 25/Box

PermaGround® Ground Clamp

- Manufactured from cast bronze or brass
- Copper conductor only
- UL 467 Listed for grounding and bonding
- Provides maximum conductivity and strength
- Type BGC-A can be used for bare or armoured cable
- BGC-1DB and BGC-2DB are suitable for direct burial in earth or concrete. Can be used to ground swimming pools and spas

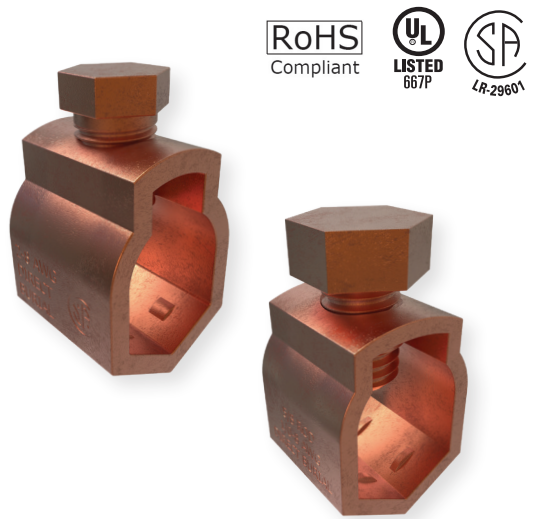
SKU# BGC-1 Brass Ground Clamp, Conductor Range 2-10, Pipe Sizes 1/2 to 1in - 25/Box
 SKU# BGC-1A Bronze Ground Clamp, Conductor Range 4-8, Pipe Sizes 1/2 to 1in - 5/Box
 SKU# BGC-2 Brass Ground Clamp, Conductor Range 2-10, Pipe Sizes 1-1/4 to 2in - 10/Box
 SKU# BGC-2A Bronze Ground Clamp, Conductor Range 4-8, Pipe Sizes 1-1/4 to 2in - 10/Box
 SKU# BGC-1DB Brass Ground Clamp, Conductor Range 2-10, Pipe Sizes 1/2 to 1in - 25/Box
 SKU# BGC-2DB Brass Ground Clamp, Conductor Range 2-10, Pipe Sizes 1-1/4 to 2in - 25/Box



PermaGround® Ground Clamp

- Manufactured from seamless bronze tubing
- Supplied with silicon bronze screw
- UL 467 Listed for grounding and bonding
- Provides maximum strength and superior conductivity
- Suitable for grounding and bonding in applications such as swimming pools and spas
- Copper conductor only
- Ground rod clamp is suitable for direct burial in earth or concrete

SKU# GRC-58 Bronze Ground Rod Clamp,
 Ground Rod Size 5/8in, Ground wire 2-8 AWG - 25/Box
 SKU# GRC-68 Bronze Ground Rod Clamp,
 Ground Rod Sizes 3/4 to 5/8in, Rebar Size #5 - 10/Box



PermaGround® Economy Ground Rod Clamps for Ground Rods and Rebar

- Manufactured from bronze alloy
- Supplied with stainless steel hardware
- UL 467 Listed for grounding and bonding
- Ensures maximum strength and durability
- Suitable for direct burial in earth or concrete
- Ensures a safe and reliable grounding connection

SKU# CGRC-38 Bronze Ground Rod Clamp, Conductor Range 4-10,
 Ground Rod Size 3/8in, Rebar Size #3 - 100/Box
 SKU# CGRC-48 Bronze Ground Rod Clamp, Conductor Range 2-10,
 Ground Rod Size 1/2in, Rebar Size #4, UL 467 Listed - 100/Box
 SKU# CGRC-58 Bronze Ground Rod Clamp, Conductor Range 2-10,
 Ground Rod Size 5/8in, Rebar Size #5, UL 467 Listed - 50/Box
 SKU# CGRC-68 Bronze Ground Rod Clamp, Conductor Range 2-10,
 Ground Rod Size 3/4in, Rebar Size #6, UL 467 Listed - 25/Box





KSC (King Shrink Crimp)

- For use in landscape lighting or wherever an in-line electrical splice is required
- For use with solid & stranded wire
- Crimp style connector with waterproof heat shrink
- Use with King Krimper tool (#46550) & Mini-Torch (#43010)

SKU# 72010 KSC-1 (Extra Small) - Bag of 20
 SKU# 72020 KSC-2 (Small) - Bag of 20
 SKU# 72030 KSC-3 (Medium) - Bag of 20
 SKU# 72040 KSC-4 (Large) - Bag of 8



Visit www.kinginnovation.com/ksc-king-shrink-crimp-connectors for a complete list of KSC wire combinations

KSC Connector Chart

KSC Connector	King Krimper Size
KSC-1	1.25mm
KSC-2	5.5mm, if using 1#18 use 2mm
KSC-3	8mm
KSC-4	14mm



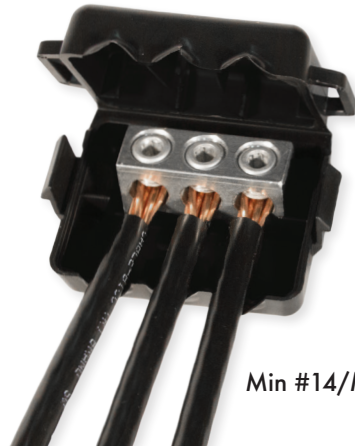
Crimp KSC connectors using the ratcheting King Krimper tool (#46550).



DB Power Connect Direct Bury Power Connector

- Designed for use in direct bury line voltage applications or in irrigation systems
- For use with solid & stranded wire
- Pre-filled with a non-toxic SmartGel®
- Waterproof & corrosion proof
- For use in outdoor or direct burial locations
- UV & impact resistant
- Eliminates the need for heat shrinks, primers, tapes, resins, & epoxy packs
- Rated up to 600V

SKU# 98105 DB Power Connect - Bag of 3



Min #14/Max #4



Low Voltage Landscape Lighting Fitting

- Solid brass lug
- For use with solid & stranded wire
- Fast curing heat shrink with adhesive lining
- Weather resistant to withstand outdoor elements
- For use in low voltage landscape lighting & direct bury applications
- Set screw thread pitch allows tighter securing of wires

SKU# 90330 Medium ACE Connector* - Box of 50
 SKU# 90335 Medium ACE Connector* - Bag of 2



Medium ACE*
Min #18/Max #8



*UL1838 Compliant

All trademarks, U.S. & Foreign apply. All rights reserved.



SnapLoc™ Wire Connectors Waterproof Wire Connectors

- For use in irrigation applications
- For use with solid & stranded wire
- No tools required
- Silicone filled connector
- Safe, fast & reliable
- Strong wire restraint
- BVS2: Max 30V

Blazing Valve Splice (BVS)

SKU# BVS2 Clear & Yellow - Package of 20

Large Hole:
Min #14/Max #12

Small Hole:
Min #20/Max #16

BVS2



U.S. Pat. 7,335,050

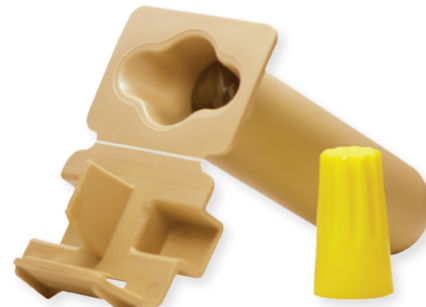


Direct Bury GTSR

Grease Filled Tube with Strain Relief

- Pre-filled with petroleum grease that never hardens
- For use with solid & stranded wire
- Waterproof & corrosion proof
- Easy-latch lid provides strain relief
- Includes orange or yellow nut for wire splicing
- Manufacturer approved for direct bury
- Perfect for low voltage applications up to 50V

SKU# 20210 GTSR w/Yellow Nut - Bag of 25



Yellow Nut
Min #18/Max #10



Direct Bury GTSR with Copper Crimps

Grease Filled Tube with Copper Crimp Connector

- Pre-filled with petroleum grease that never hardens
- For use with solid & stranded wire
- Waterproof & corrosion proof
- Easy-latch lid provides strain relief
- Includes copper crimp connector
- Manufacturer approved for direct bury
- Perfect for low voltage applications up to 50V

SKU# 20215 GTSR GTSR w/ Crimps - Bag of 25



Crimp Direct Bury GTSR with Copper Crimps connectors using the 4-Way Crimp Tool (#46540).



Direct Bury

- UL Listed 600V for dry, wet or above/below grade applications when used in an enclosure
- For use in Direct Bury applications when operating at 30V or less
- For use with solid & stranded wire
- Pre-filled with dielectric silicone sealant that never hardens
- Waterproof & corrosion-proof
- One-step® installation saves time & money
- No pre-twisting required

SKU# 10990 King 9 Dark Blue - Card of 2

SKU# 10999 King 9 Dark Blue - Bag of 8

SKU# 10975 King 9 Dark Blue - Box of 75



King 9 Dark Blue
Min #14/Max #6

2" Ratchet Poly/PVC Pipe Cutter

- Cuts up to 2" SCH40, Class PVC Pipe or Yellow (PE) Gas Pipe
- Cuts up to 2" Poly (PE) Pipe
- PTFE Coated Steel Blade for precision cuts
- Strong & durable cast aluminum body
- Easy to change blade

SKU# 46350 2" Ratchet - Card of 1

SKU# 46351 2" Ratchet Replacement Blade - Card of 1



1 1/4" Ratchet Poly/PVC Pipe Cutter

- Cleanly cuts up to 1 1/4" SCH40, Class PVC Pipe & up to 1 1/4" Poly (PE) Pipe
- PTFE Coated Steel Blade for precision cuts
- Strong & durable cast aluminum body
- Pointed steel blade for ease of cutting

SKU# 46310 1 1/4" Ratchet - Card of 1

SKU# 46311 1 1/4" Ratchet Replacement Blade - Card of 1



SwitchBlade PRO Cutter

- **QUICK RELEASE BLADE:** push button blade release for the fastest blade swap on the market
- Cleanly cuts non-metallic flexible conduit
- Comfort fit handle conforms to your hand
- Replacement blades available
- 10 pack dispenser with magnetic backing not available for 2")

SKU# SB5000 1 1/2" Switchblade PRO w/PTFE Coated Blade - Card of 1

SKU# BL5001 PTFE Coated Replacement Blade - Card of 1

SKU# BL5010 PTFE Coated Replacement Blades - Pack of 10

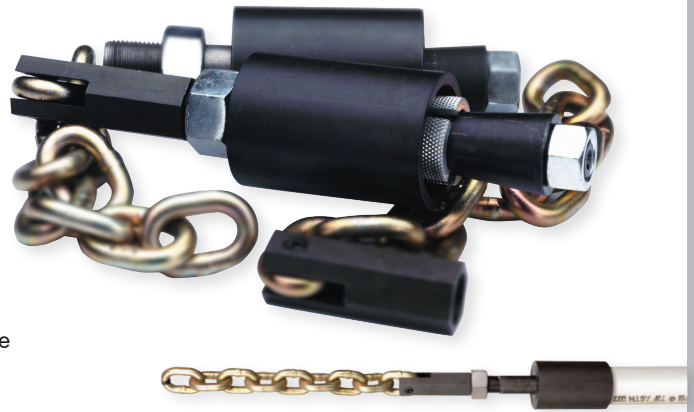
SKU# SB6000 2" Switchblade PRO w/PTFE Coated Blade - Card of 1

SKU# BL6001 2" PTFE Coated Replacement Blade - Card of 1

U.S. Pat. D694,603, 9,566,716, 6,658,738. All Rights Reserved.

KING GRIPS

- Quick coupling & release saves time
- No steel splinters
- Fits all pipe pulling equipment
- Plated for rust prevention
- No tape required
- Available in a convenient kit
- For 3/4" to 2" Polyethylene Pipe & 3/4" to 4" PVC Pipe
- Durable, closed-end design protects pipe from soil entry
- Minimum pipe grip eliminates wasted pipe material



SKU# 81701 1" 2" Diameter Bullet with 1" to 1½" Shaft, 1" Grip Only - QTY 1

SKU# 81315 1" Chain with Male & Female Adapter 3/4" Hex Stock - QTY 1

SKU# 81314 Female Adapter 3/4" Hex Stock - QTY 1

SKU# 81311 1" Heavy Duty Chain with ML & FML Adapter 1" Hex Stock - QTY 1

SKU# 81801 1" PVC Kit Grip & Chain - QTY 1

SKU# 81802 1" 80# Poly Kit Grip & Chain - QTY 1

SKU# 81803 1" 100# Poly Kit Grip & Chain - QTY 1

SKU# QA5562 10" Set Wrench, Extends life of grips - QTY 1

See price list for a complete list of SKU's

MADE IN USA

Mesh Grips

- For pulling irrigation PVC & Poly Pipe, directional boring pull backs, insulated wire, wire rope, tubing, & bare conductors
- Reusable
- Available with swivels built into grip
- Coated galvanized cable
- Reverse weave & single wire bail
- Work load capacity of 1,500 to 3,500 lbs
- Various grip lengths, pipe ranges, & weaves available



See price list for a complete list of SKU's

MADE IN USA

Industrial Scissors + Safety Holster

- Safety Holster with belt clip
- Crimp Terminal Sleeves (#22 - #10 AWG)
- Cushion Grip Handles for extra leverage
- Cut up to #6 AWG or 1/0 Flex (CU or AL conductor)
- Stainless steel blades hardened to 55 HRC with non-slip micro-indentations

SKU# THT-SC-CC Industrial Scissors - Card of 1



GORILLA WIRE STRIPPER™

- Ergonomic comfort squeeze handle eases hand fatigue & provides non-slip grip
- Features handle lock closure for added safety
- Tools available for multiple solid & stranded wire gauges

SKU# 46515 Gorilla Wire Stripper/Cutter w/Handle Lock #20-#10 AWG - Card of 1



Adjustable Automatic Wire Stripper

- Cut & strip 10-26 AWG copper or aluminum wire, solid or stranded
- Crimps 10-22 AWG insulated, noninsulated & open barrel terminals
- Hardened steel cutting blades provide strength & durability
- Comfortable high-leverage handle design
- Automatic jaw-loaded wire stripper self-adjusts
- Spring action return
- Adjustable strip length gauge
- Adjustable grip force

SKU# GS-395 Adjustable Automatic Wire Stripper - Card of 1



Apprentice Tool Kit

- Kit includes basic tools that apprentice electricians require.
- 4-in-1 Wire Stripper with lock cuts and strips 10-20 AWG solid wire & 12-22 AWG stranded wire.
- Lineman's Pliers with crimper for non-insulated terminals and serrated jaw for maximum gripping.
- 6-in-1 Screwdriver Contains 3/16" & 1/4" flat heads, #1 & #2 Phillips heads, and 5/16" & 1/4" hex socket heads.
- 4-pocket Tool Pouch included for easy tool storage and transportation.

SKU# TK-10 Apprentice Tool Kit - Card of 1



TaskMaster Stripping Tool

- Strips cable diameter 0.18 - 1.14 in
- 3 locking positions performs consistent concentric, lateral & spiral cuts
- Blade blocking system prevents breaking blade from mis-use
- Ergonomic hand hold provides comfort for repetitive use
- Closed jaw design allows for a snug hold on conductor
- Blade adjustment wheel provides versatility by changing depth of blade
- Directional latch performs concentric, lateral, & spiral cuts

SKU# TST-CJ29PRO Stripping Tool - Card of 1



ArmorEdge Wire Stripper

- Stainless steel, hardened cutting blade
- Cuts mild steel, brass, copper, & aluminum wire
- Strips 10-18 AWG Solid, 12-20 AWG Stranded
- Bolt Cutting: 6-32, 8-32, 10-32
- Precision ground plier nose & wire looping holes
- Ergonomic handle with easy-to-read laser-etched markings
- Spring action return

SKU# GESP-55 ArmorEdge Wire Stripper - Card of 1



ArmorEdge Wire Stripper

- Stainless steel, hardened cutting blade
- Cuts mild steel, brass, copper, & aluminum wire
- Strips 8-20 AWG Solid, 10-22 AWG Stranded
- Crimps 10-22 AWG insulated & non-insulated terminals, coaxial connectors
- Bolt Cutting: 4-40, 5-40, 6-32, 8-32, 10-24, 10-32
- Precision ground plier nose & wire looping holes
- Ergonomic handle with easy-to-read laser-etched markings

SKU# GESP-70 ArmorEdge Wire Stripper - Card of 1



ArmorEdge® Long Nose Wire Stripper

- Forged steel construction, induction hardened cutting blade
- Cuts mild steel, brass, copper, & aluminum wire
- Strips 8-20 AWG Solid, 10-22 AWG Stranded
- Straight & curved serrated jaws
- Crimps insulated & non-insulated connectors
- Bolt Cutting: 6-32, 8-32
- Ergonomic handle with easy-to-read laser-etched markings

SKU# GBP-61N ArmorEdge Wire Stripper - Card of 1



Ratcheting Cable Cutter

- Ratcheting mechanism for increased leverage
- Variable-force cutting action permits choice between high force & speed
- Dual-action handles cut from either direction; easy to use in tight spots
- Rubber hand grips permit firm grip control
- Hardened alloy-steel blades are easily sharpened without removing them from the tool

SKU# GRC-750 Ratcheting Cable Cutter - Card of 1



Cable Cutter

- Cuts cleanly with high leverage one hand operation
- Cuts soft copper & aluminum cable
- Precision ground, high strength steel blades
- 8" length

SKU# GC-375 Cable Cutter - Card of 1



Electrician's Knife

- Key ring for continuous easy access
- Tempered carbon-steel blades sharpen easily & hold their edge
- Compact 3 3/4" in size
- Spear blade for general cutting & 2 1/2" screwdriver blade with safety lock

SKU# KF-200 Electrician's Knife - Card of 1



Clamp Meter

- Precise True RMS Circuitry
- Integrated non-contact voltage detection
- Data hold capability to maintain reading on display
- Auto power off functionality to save battery life
- Designed & tested according to cETLus standards & is CAT III 600V rated

SKU# DSA600TRMSR Clamp Meter - 1 per pack



Digital Auto Ranging Multimeter

- Auto ranging capability allows the meter to automatically determine the resolution based on the application
- Compact, lightweight design
- AC/DC voltage capable with temperature measurement functionality
- Impact resistant housing
- Operates from (2) AAA batteries, included

SKU# DM6260 Digital Multimeter - 1 per pack



Adjustable Non-Contact Volt Detector

- Built-in flashlight
- The adjustable Volt Sensor allows for sensitivity adjustments in multiple-wire applications when precision & safety are crucial.
- Adjustable non-contact sensitivity detects voltage from 12-1000V AC
- Audible & 360 visual indication
- Operates from single AAA battery
- Patented battery self-test feature
- Pocket Clip

SKU# VD6509 Adjustable Non-Contact Volt Detector with Flashlight - 1 per pack



Digital Multimeter 4 Function 16 Range

- 16 Position, smooth rotary dial
- Data hold feature captures the reading on the display
- Durable, drop resistant housing
- Clear 2000 count digital display
- Replaceable 26" test leads
- Protective rubber boot with test lead holders & tilt-out stand
- Snap in leads spaced to fit standard outlets
- Compact design for easy use, storage, & transportation
- Conforms to UL 61010-1 standards and certified to CAN/CSA C22.2

SKU# GDT-3190 Digital Multimeter - 1 per pack



Digital Multimeter 3 Function 14 Range

- 12 position, smooth rotary dial
- Durable, drop resistant housing
- Clear 2000 count digital display
- Dual off positions on dial for added convenience
- Compact design for easy use, storage, and transportation
- Conforms to UL 61010-1 standards and certified to CAN/CSA C22.2
- Secure fitting input jacks

SKU# GDT-311 Digital Multimeter - 1 per pack



Pocket Digital Multimeter

- Measures AC/DC Voltage, Resistance, Frequency, Continuity, Duty Cycle, & Diode Test
- Auto ranging
- Overload protection on all ranges
- Data hold feature captures the reading on the display
- Auto power off & low battery indicator
- 3999 Count LCD Display
- Relative delta displays changes in reading
- Pocket-sized design for easy use, storage & transportation
- Designed to CAT II 600V

SKU# DM4A Pocket Digital Multimeter - 1 per pack



Thin Digital Multimeter

- Thin design for easy use, storage and transportation
- ETL listed to UL and CSA standards
- Min/Max function to hold either minimum reading or maximum reading on the display
- Instant Continuity Buzzer
- Data hold feature captures reading on the display
- Auto power off and low battery indicator
- Large Backlit 1999 Count LCD screen
- Operates from (2) AAA batteries, included

SKU# DM6800 Thin Digital Multimeter - 1 per pack



TRUE RMS Thin Bluetooth Digital Multimeter

- Thin design for easy use, storage, and transportation
- Datalogging with 2MB storage (1 reading/second for 36 hrs)
- GPS location linking feature tracks where recordings are being measured
- True RMS for accurate measurement of noisy or nonsinusoidal AC waveforms
- Min/Max function to hold either minimum reading or maximum reading on the display
- Relative delta displays change in readings
- Data hold feature captures reading on the display
- Large Backlit 3999 Count LCD screen
- Auto power off and low battery indicator
- Operates from (2) AAA batteries, included

SKU# DM6850T True Rms Thin Bluetooth Digital Multimeter - 1 per pack



**FREE
DOWNLOADABLE
APP!**



Download on the
App Store

GET IT ON
Google Play

Temp Check™ Gun Style Infrared Thermometer

- Measures temperature without contacting an objects surface
- Fast and easy - provides results in seconds
- Laser pointer to guide accuracy
- Backlit screen for superior visibility in most applications
- 12:1 Distance to spot ratio
- Max hold reading on the display
- Auto power off
- Operates from (1) 9 volt battery, included

SKU# IRT200 Temp Check™
Gun Style Infrared Thermometer - 1 per pack



KING AL Wire & Valve Locating System

- Professional unit designed to quickly & accurately locate wire paths, buried valve solenoids, wire breaks & more
- Adjustable power output to locate over a wide range & select the best signal for optimal system performance
- Choose from speaker audio, headset audio and/or visual indication
- Transmitter, receiver & headphones built tough for rugged outdoor use
- Lightweight, long-nose receiver wand for ease of use & speedy path location
- Battery operated device for use on remote systems*

Includes:

1. Headset
2. Ground Stake
3. Transmitter
4. Receiver
5. Carrying Case
6. Black Lead
7. Red Lead
8. Selector knob
9. On/Off Switch
10. Battery Cover

SKU# 42521 KING AL - Case of 1



*Battery: Eight (8) D-cell & One (1) 9V
- Batteries not included.

KING DL Advanced Digital Cable, Wire & Valve Locating System

- Tracks metallic cabling & buried AC power lines CATV, electrical, telephone, sprinkler or lighting wire
- Inductive mode capability: inductive clamp & inductive antenna modes
- Dual direct connect frequencies (2kHz, 33kHz) & adjustable power for a variety of locating applications
- Passive 50-60Hz AC Tracking
- Choose between null or peak tracing modes
- AC noise rejection system for improved accuracy
- Both audible (external speaker or headset) and visual indicators
- Sealed controls & display for durability & reliability
- Extended range for largest irrigation systems
- Determine wire depth using the triangulation method

Includes:

1. Receiver
2. Stereo Headset
3. Transmitter
4. Carrying Case
5. AC Wall Power Unit
6. Inductive Clamp
7. Ground Stake
8. Red Lead
9. Black Lead

SKU# 42900 KING DL - Case of 1





Siphon King® Utility Pumps

- Corrosion proof
- Provides quick removal of water
- Self-priming, lightweight utility pump
- High strength, ergonomic handle can withstand extreme temperatures & harsh usage
- 36" pump provides quick removal of 1 gallon in 4 strokes
- 24" extension available; fits on to existing pump to access hard to reach areas
- Steel shaft improves strength
- Flexible discharge hose for directing water evacuation
- Removable intake foot for easy cleaning
- Perfect for removing water from valve boxes, meter pits, pipe trenches, & anywhere water accumulates

Siphon King® Display Rack

(See page 25 for details)

SKU# 48024 24" Pump x 36" Hose - QTY 1

SKU# 48036 36" Pump x 36" Hose - QTY 1

SKU# 48072 36" Pump x 72" Hose - QTY 1

SKU# 48230 24" Pump Extension - QTY 1



24" Pump x 36" Hose

36" Pump x 36" Hose

36" Pump x 72" Hose

24" Pump Extension

U.S. Pat. 7,726,231. All other trademarks, U.S. & Foreign Patents Pending apply. All Rights Reserved.

Siphon King® Syringe Sucker

- For use in small spaces, including golf valve bodies, meter pits, narrow trenches, etc.
- 3/4" barb fitting with 12" pipe attachment
- Replace 12" pipe with any length funny pipe for maximum flexibility & reach

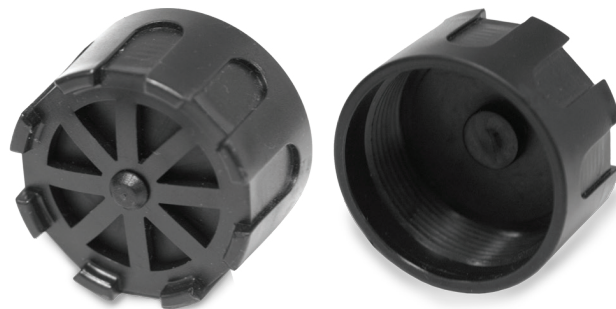
SKU# 48215 Syringe Sucker - Card of 1



Siphon King® Pump Assembly Foot

- Screws on easily
- Works with all Siphon King Utility Pumps

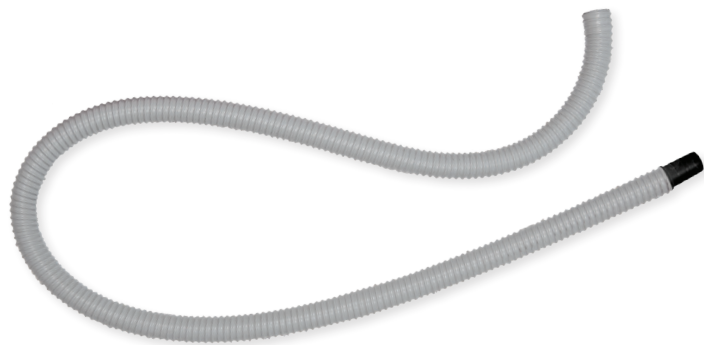
SKU# 48205 Pump Assembly Foot - Bag of 1



Siphon King® 72" Extension/ Replacement Hose with Coupler

- 72" flexible hose directs water away from work site
- Coupler provides extension to existing pump hose

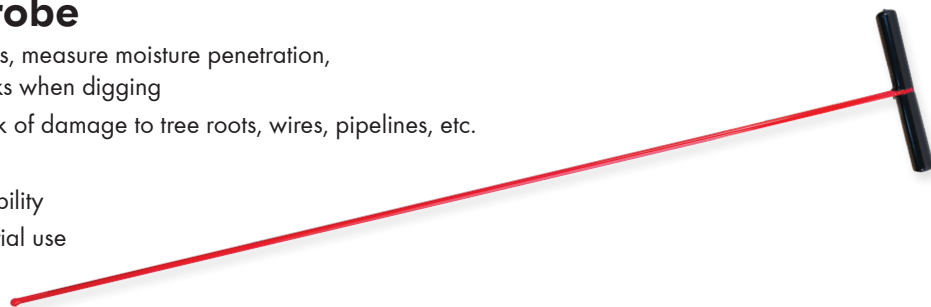
SKU# 48272 72"
Extension/Replacement Hose - Bag of 1



Ball Bearing Probe

- Use to locate sprinkler lines, measure moisture penetration, or avoid roots, pipe & rocks when digging
- Rounded head reduces risk of damage to tree roots, wires, pipelines, etc.
- Made of durable steel
- Lightweight for easy portability
- For commercial or residential use
- 48" long probe

SKU# 25210
Ball Bearing Probe - Unit of 1



20 Watt LED Battery Operated Work Light with Bluetooth Speaker

GB brings together two of the most popular technologies into one easy to use portable device. The new GWL-20BT 20-Watt LED Work Light produces over 2000 lumens & includes two built-in 3-watt Bluetooth speakers. Whether you are on a commercial jobsite or working on a project around the home, this work light will make every job more enjoyable & easier to complete.

- 2 Bluetooth speakers
- USB accessory charger - 4 hours charging time
- Features quick release locking & rotating kickstand with mounting bracket
- Battery life 3-6 hours
- 6000K Color Temperature - Natural Day Light

SKU# GWL-20BT 20 Watt Work Light - Box of 1



30 Watt Heavy Duty Battery Operated LED Work Light

GB continues to bring innovation & durability to the jobsite & around the home. The new Heavy Duty GWL-30HD Work Light offers 30-watt & 3000 lumens to light up any project. It also offers one of the most durable body frames for portable work lights with a drop test rating of 25 feet. An IP65 weather-resistant casing & covers make it ideal for outdoor use. The USB accessory charger provides up to 3 hours of charging time.

- Water resistant & 25 ft. drop test
- Features quick release locking & rotating kickstand with mounting bracket
- USB accessory charger - 3 hour charging time
- Water resistant charger cover
- 3000 Lumens, 30 Watts

SKU# GWL-30HD 30 Watt Work Light - Box of 1



40 Watt LED Work Light

GB's 40-Watt Multi-Task Work Light combines multiple features to suit the needs of nearly all applications. The GWL-40 includes a 10 ft. power cord with a 4.5 ft. extension cord to provide power to other tools needed on the job. With 4 industrial grade magnets on the back, the unit can be easily mounted when space is limited, or the kickstand can be used on a table or floor.

- 90 degree directional LED swivel light
- Built-in stand & power cord caddy
- 4 heavy duty magnets for mounting
- 40 watts / 3800 lumens
- 10 ft power cord with a 4.5 ft extension cord to provide power to other tools needed for the job

SKU# GWL-40 40 Watt Work Light - Box of 1



K5 LED High Bays PRO 30 Watt Light

Bergen's construction grade Temporary High Bays are designed for the job site but offer portability that make it easy to use for do-it-yourself & FarmAg applications. Includes stainless steel reinforced cages, heavy-duty carabiner hook, Daisy-chain, 10ft. 18/3 SJTW power cord.

Bergen Temporary High Bays are an energy saving & long life solution to replace traditional HID & CFL work lights.

- Rated up to 50,000 life hours
- Lumens range from 4000 to 13,000
- Heavy duty, durable design
- Easy portability, light weight
- All-Weather Applications, IP65
- UL & OSHA Compliant
- 10' power cord with extra 1' daisy cord to allow for daisy chain applications
- Daisy-Chain Multiple units & control from a single switch
- 5 Year Warranty

SKU# K5-30 - K5 LED 30 Watt High Bays PRO Light - Box of 1



K5 LED High Bays PRO 60 Watt Light

Bergen's K-Series LED work light is a low cost energy efficient solution for new build construction/ renovation projects & permanent lighting in warehouse, maintenance, storage & tent spaces. Easy to install, portable, versatile & light weight. Use as floor light, table top light or hang using the provided snap-lock hook. 130-Lumen per watt provides brilliant white illumination. Up to 85% energy savings, this LED work light has no filament or glass shell, no lead, no UV, no radiation & no flicker or glare.

- Omni-directional luminaire; directs 100% of the light outward & downward
- 10 ft. power cord/1 ft. female daisy-chain
- For spaces with ceiling heights higher than 20 ft.

SKU# K560 - K5 LED 60 Watt High Bays PRO Light - Box of 1

SKU# K5100 - K5 LED 100 Watt High Bays PRO Light - Box of 1

SKU# LL20 - LED 20 Watt Small Area Work Light - Box of 1

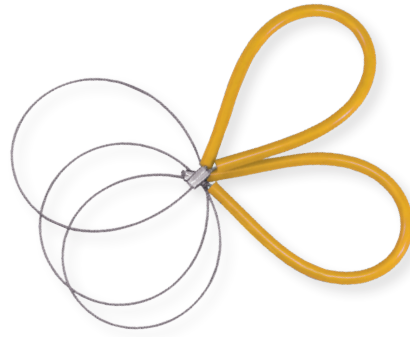
SKU# GL5CM - Magnet O-Ring Hooks - Bag of 5



Cable Saw

- 36" Cable Saw
- For fast cutting of PVC plumbing, drain, & irrigation pipe
- Great for tight spaces

SKU# 46300 Cable Saw - Card of 1



Blue Tote Tray

- Easily transport glue, tools, & other supplies to & from job sites
- Oversized for maximum capacity without the worry of spilling
- Storage grooves on the side of handle allow for smaller supplies, such as connectors
- Heavy duty construction

SKU# 47027B Blue Tote Tray - QTY 1



Product not included

MADE IN USA

Repair Tape

- A quick fix during emergency repairs- leaky hoses, pipe insulation, electrical connections, tool handles, air ducts, & cord/rope ends
- Non-adhesive formula leaves no sticky residue
- Repair Tape is waterproof, weatherproof, & air tight
- Insulate & protect around the house & minimize the need for emergency repairs
- Waterproof & insulate wire connections with no extra equipment or heat required
- Non-Stick Repair Tape fuses only to itself when applied under tension. No sticky residue remains on wrapped surfaces
- Operates & remains flexible from -60°F (-51 °C) to 500°F (260°C)
- Stretches up to 300% its original length with 60 ppi tear strength
- A permanent air & water tight seal, Repair Tape has excellent UV Resistance
- Secure: Repair Tape begins to bond immediately on contact with itself. Repositioning is not recommended after 2 minutes of contact, & the bond is permanent within 24 hours

SKU# HTP-1010 Repair Tape, Black, 10' - 1 per pack

SKU# HTP-1010WHT Repair Tape, White, 10' - 1 per pack



PTFE Thread Tape

- 520" roll
- Creates a watertight seal around threaded pipe joints
- Resists water & corrosion
- Flexible & easy to tear for quick installation
- 0.004" thick, medium density
- Tensile Strength: 3.5 lbs/inch, Elongation: 25%
- Temperature Range: -375 °F to 500 °F

SKU# 86020 1/2" x 520" PTFE Thread Tape - QTY 1

SKU# 86021 3/4" x 520" PTFE Thread Tape - QTY 1

SKU# 86022 1" x 520" PTFE Thread Tape - QTY 1



Electrical Tape

- Use for marking & coding wires
- For applications up to 600V
- Temperature rating up to 80°C (176°F)
- UL listed & CSA certified
- Vinyl electrical tape is a tough 7 mil tape with excellent adhesive ability
- Resistant to abrasion, UV rays, moisture & many acids

SKU# GTP-607 Black Vinyl Electrical Tape (UL Listed) - QTY 1



GTP-607 replaces
King Innovation
sku #86001



Heavy Duty Electrical Tape

- UL and CSA Approved
- Lead Free
- Flame Resistant
- Highly Resistant to Sun, Water, Oil, Acids, Alkalies, and Corrosive Chemicals
- 600 Volt Rating

SKU# GTP-3366 All Weather Heavy Duty Vinyl Tape - QTY 1

SKU# GTP-8866 Extra Thick All Weather Heavy Duty Vinyl Tape - QTY 1



Pipe Wrap Tape

- Provides UV & Weather Protection
- Stretchable, strong adhesive
- Great for cast & ductile iron, galvanized steel, electrical conduit types of pipes & fittings
- Waterproof & non-corrosive
- 2" x 100 feet x 10 mil

SKU# 86080 Pipe Wrap Tape - QTY 1



UPC Pipe Wrap Tape

- Provides UV & Weather Protection
- Stretchable, strong adhesive
- Great for cast & ductile iron, galvanized steel, electrical conduit types of pipes & fittings
- Waterproof & non-corrosive
- 2" x 100 feet x 10 mil

SKU# 86081 UPC Pipe Wrap Tape - QTY 1



Extension Cords

- Length: 25', 50' or 100'
- Cord color: Yellow or Orange
- Rating: 15A, 125V



SKU# OC100123LT 100' Yellow 12/3 Cord - QTY 1

SKU# OC25143 25' Orange 14/3 Cord - QTY 1

SKU# OC501433T 50' Orange 14/3 Cord with Triple Tap - QTY 1

SKU# OC251233T 25'

Yellow 12/3 Cord Lighted End with Triple Tap - QTY 1

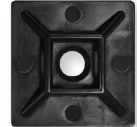


Black Nylon Cable Ties

- Easy to use ties for landscape lighting on decks or trees, home, electrical, or any fastening needs
- Self-locking, one-piece, low profile head conserves space
- For maximum comfort, smooth rounded edges will not cut hands or insulation
- Available in 8", 11", 14", 17" & 24" sizes
- 8" cable tie available with or without screw mount head
- 1" x 1" adhesive black cable mount available
- Rated for indoor/outdoor use
- Easy to use self-locking ties for many fastening uses
- UV resistant
- Nylon toughness
- Flammability rating: UL 94V-2
- Plenum rated AH-2



- SKU# 46-308UVB 8" Black Cable Ties - Bag of 100
- SKU# 46-210UVB 11" Black Cable Ties - Bag of 100
- SKU# 46-315UVB 14" Black Cable Ties - Bag of 100
- SKU# 46-418UVB 17" Black Cable Ties - Bag of 50
- SKU# 46-424UVB 24" Black Cable Ties - Bag of 50
- SKU# 48-308UVB 8" Black Cable Ties with Screw Mount - Bag of 100
- SKU# MB-20UVB Black Cable Mount (not UL Listed) - Bag of 100



Black Xtreme Cable Ties

- Designed to perform under intense UV & cold weather conditions - your project stays securely bundled no matter what Mother Nature brings
- Engineered from improved Nylon 66 & ISO certified to maintain their properties down to -40°F/C
- UL listed for indoor & outdoor applications from -40°F to 185°F (-20°C - 85°C)
- 50lb. tensile strength
- UV Black

- SKU# 45-308UVBFZ 8" Xtreme Cable Tie, Black - Bag of 20
- SKU# 45-311UVBFZ 11" Xtreme Cable Tie, Black - Bag of 20
- SKU# 45-314UVBFZ 14" Xtreme Cable Tie, Black - Bag of 20
- SKU# 46-308UVBFZCC 8" Xtreme Cable Tie, Black - Bag of 100
- SKU# 46-311UVBFZ 11" Xtreme Cable Tie, Black - Bag of 100
- SKU# 46-314UVBFZ 14" Xtreme Cable Tie, Black - Bag of 100



Stainless Steel Cable Ties

- Resists chemicals & radiation exposure as well as enduring extreme temperatures
- Stainless steel design is great for clean environments
- Self-locking ball mechanism meets low insertion force requirements while maintaining high tensile strength
- Operating temperature rated up to 572°F (300°C)

- SKU# 45-306SS 6" Stainless Steel Cable Ties - Bag of 10
- SKU# 45-312SS 11" Stainless Steel Cable Ties - Bag of 10



Blazing Measuring Wheel

- Road marking, paving, fencing, lawn, landscape, sports fields
- Property assessment, traffic control, insurance
- Mainly used on uneven surface over long distances
- Professional design with Brake Trigger & Reset Trigger
- Measure up to 10,000 feet, inch increments
- High traction flat tire mounted onto rim
- Wheel runs on roller bearings
- Firm & solid kickstand

SKU# BMW12 Measuring Wheel - Carton of 1



Wheel diameter 12"
Wheel circumference 38"

Storage Organizers

- Perfect for storage & organization
- High-impact plastic pail with heavy duty handle
- Storage trays fit snugly inside pail
- Full size sorter trays interchange with half size trays
- Water-resistant lids are easy to put on & take off
- Available in multiple tray quantities for customization

SKU# 47502 5 Gallon Yellow Pail
- 1 Lid, 2 Large and 2 Small Black Trays

SKU# 47405 5 Gallon Yellow Pail
- 1 Lid, 3 Large Black Trays

SKU# 47506 5 Gallon Yellow Pail
- 1 Lid, 6 Small Black Trays



Product not included

MADE IN USA

65' Steel Fish Tape

- Great for fishing wire through conduit & locating underground pipes
- 65' fish tape
- Ergonomic handle
- 8.5 Inch external ring diameter with 4 Inch internal ring diameter

SKU# FTS-65R Fish Tape - Pack of 1



15' Mini Cable Snake

- Use for fishing & pulling irrigation & low voltage lighting wires through conduit
- Compact, rugged design can be easily carried & stored
- 15 foot flat steel wire tape fishes under carpets, down walls & over ceilings
- Low-memory tape does not curl during extension - perfect for non-conduit situations
- Durable, high-impact housing resists breaking



SKU# EFT-15 Mini Cable Snake - Pack of 1

Mini-Torch with Butane

- Perfect for use with heat shrink style wire connectors
- Uses butane gas
- Quick light torch with easily adjustable continuous flame
- Compact size for portability
- Includes soldering attachment
- Fuel: Butane
- Operating Time: 30-40 minutes
- Approximate Temperature: Up to 1300°C (2372°F) (blue flame)



SKU# BHST-200 Mini-Torch - QTY 1

DANGER- EXTREMELY FLAMMABLE
WARNING- CONTENTS UNDER PRESSURE

Hanger Strap

- For hanging or fastening conduit, pipe or cables
- Galvanized to protect against rust & corrosion
- Flexible for easy use
- Pre-punched holes for easy mounting
- 1 per pack
- Shrink Temperature: 120°C



SKU# GHS-1510 Hanger Strap
10' x 3/4" x 20 gauge - 1 per pack

Wire Markers

- Saves time & money during all on-site & in-plant initial hookup, troubleshooting, maintenance & repair
- Automatic, separate marker numbers
- Easy feed, individual number reels 0-9
- Easy tear for quick, convenient marking of wires
- Non-smear material that resists, moisture, dirt & oil

SKU# 47690 Wire Marking System - 1 per pack
 SKU# 47691 Wire Marking System Refill - 1 per pack



Wire Marker Book

- Pocket-sized booklets of cloth wire markers & matching terminal markers
- Saves time & money during all on-site initial hookup, troubleshooting, maintenance & repair
- Fabric resists moisture, dirt & oil
- Non-smear legends assure high visibility for instant, positive identification
- Matching terminal marker with every wire marker, plus an extra page of blank write-on wire & terminal markers for special legends

SKU# 42-027 Wire Marker Booklet, 0-9 - Pack of 1
 SKU# 42-028 Wire Marker Booklet, A-Z, 0-15, Symbols - Pack of 1



Clamp Ground Rod

- 1/2" - 1", 10 - 2 AWG
- Secure ground wires to ground rod

SKU# 14-GRC
 Clamp Ground Rod, Bronze - 1 per pack



Liquid & Spray Tape

- Waterproof, will not unravel or deteriorate like traditional tape
- Great for home, auto/marine, indoor/outdoor use and electrical applications.
- Brush-on applicator included.

SKU# LTB-400 Liquid Tape 4oz. Jar, Black - Pack of 1
 SKU# LTG-400 Liquid Tape 4oz. Jar, Green - Pack of 1
 SKU# LTR-400 Liquid Tape 4oz. Jar, Red - Pack of 1
 SKU# LTW-400 Liquid Tape 4oz. Jar, White - Pack of 1



Liquid Spray Tape

- Seals and protects wire splice connections
- Vinyl construction
- Rated to withstand temperatures up to 167 degrees Fahrenheit
- UL and CSA safety listings
- Remains flexible in extreme temperatures and climates
 -30 to 200 degrees F and -34 to 93 degrees C
- Dries black
- Indoor/Outdoor

SKU# LTS-400* Spray Liquid Tape Black 6oz. Can - Pack of 1

*Contained in aerosol canister.



Self Sealing Tape

- Insulates and seals surfaces.
- Fuses to itself during application to stay watertight.
- Silicone Tape provides permanent mold in 24 hrs, or in min. with application of heat.

SKU# RTP-3422
 Rubber Tape 3/4" x 22 x 7 mil Black - 1 Roll





Siphon King Display Rack

- 25" tall x 18" wide x 18" deep
- Metal construction, assembles in seconds, no tools required
- Holds 16 Siphon King pumps
- Four sided signage allows for ease of movement & placement anywhere

SKU# RET250 - QTY 1

Display shown with:

- 8- 36" x 72" Pumps,
 - 4- 24" x 24" pumps
 - 4- 24" Extension Pumps
 - 2- Siphon King Syringe Sucker cards
 - 2- 72" Extension hoses
- (Product not included)

9" Accessory Hook

- Fits onto RET250 display without any tools or hassle
- Holds Siphon King accessory items:
Syringe Sucker & Extension Hose

SKU# RET251 - QTY 1

Display Riser

- Attaches to lower shelf of RET250 display
- Riser allows 24" pump (48024) & 24" Extension Pump (48230) to be displayed

SKU# RET252 - QTY 1



INDEX

14-GRC	31	48024	22
42-027	31	48036	22
42-028	31	48072	22
45-306SS	28	48205	23
45-308UVBFZ	28	48215	23
45-311UVBFZ	28	48230	22
45-312SS	28	48272	23
45-314UVBFZ	28	63315	5
46-210UVB	28	63350	5
46-308UVB	28	63615	8
46-308UVBFZCC	28	63650	8
46-311UVBFZ	28	69105	8
46-314UVBFZ	28	69205	5
46-315UVB	28	72010	11
46-418UVB	28	72020	11
46-424UVB	28	72030	11
48-308UVB	28	72040	11
10666	7	81311	14
10975	2	81314	14
10990	12	1315	14
10999	12	81701	14
20210	12	81801	14
20215	12	81802	14
20230	6	81803	14
20235	6	86020	26
20260	6	86021	26
20265	6	86022	26
20635	6	86080	27
25210	23	86081	27
31556	4	90120	4
42521	21	90220	7
42900	21	90330	11
46300	26	90335	11
46310	13	90740	5
46311	13	90750	8
46350	13	98010	6
46351	13	98105	11
46515	15	98305	4
47027B	26	98305	7
47405	29	BGC-1A	10
47502	29	BGC-1	10
47506	29	BGC-1DB	10
47690	31	BGC-2A	10
47691	31	BGC-2	10

BGC-2DB	10	IK-6	9
BHST-200	30	IK-8	9
BL5001	13	IK-10	9
BL5010	10	IRT200	20
SB6000	13	K5-30	25
BL6001	13	K560	25
BMW12	29	K5100	25
BVS2	12	KF-200	17
CGRC-38	10	LL20	25
CGRC-48	10	LTB-400	32
CGRC-58	10	LTG-400	32
CGRC-68	10	LTR-400	32
DM4A	19	LTS-400	32
DM6260	18	LTW-400	32
DM6800	20	MB-20UVB	28
DM6850T	20	OC25143	27
DSA600TRMSR	18	OC100123LT	27
EFT-15	30	OC251233T	27
GBP-61N	16	OC501433T	27
GDT-311	19	QA5562	14
GDT-3190	19	RET250	33
GESP-55	16	RET251	33
GESP-70	16	RET252	33
GHS-1510	30	RTP-3422	32
GL5CM	25	SB5000	13
GRC-58	10	THT-SC-CC	14
GRC-68	10	TK-10	15
GRC-750	17	TST-CJ29PRO	15
GS-395	15	ULT-1-Z	9
GTP-607	27	ULT-2-Z	9
GTP-3366	27	ULT-4-Z	9
GTP-8866	27	ULT-5-Z	9
GWL-20BT	24	ULT-6-Z	9
GWL-30HD	24	ULT-7-Z	9
GWL-40	24	ULT-8-Z	9
HTP-1010	26	ULT-9-Z	9
HTP-1010WHT	26	ULT-11-Z	9
IK-1/0	9	ULT-12-Z	9
IK-2/0	9	VD6509	18
IK-2	9		
IK-3/0	9		
IK-3	9		
IK-4	9		



42 N. Central Drive
O'Fallon, MO 63366

Phone: 800.624.4320
Fax: 262.649.7178

Website:
www.kinginnovation.com

Email: customer.service@ecmindustries.com

ECM INDUSTRIES

GB
Gardner
Bender

ILSCO
connections
matter

KING
INNOVATION®

BERGEN
INDUSTRIES, INC.

CALTERM