

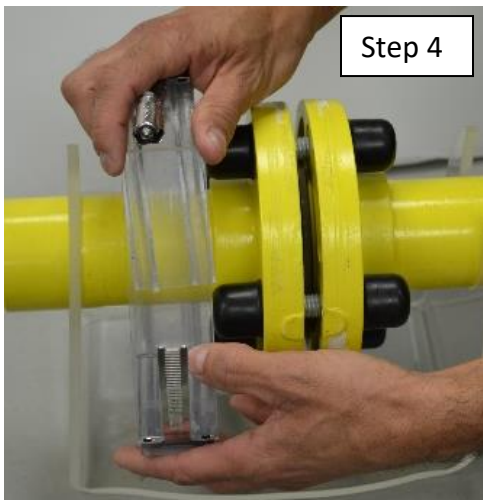


Kleerband w/ D-Seals

Installation Instructions

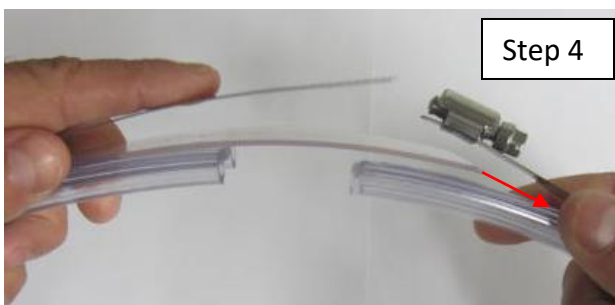


1. **Flange Inspection:** First, clean flange of any dirt and debris. Inspect flange OD for any burrs or sharp edges that could cut or damage the flexible seal. These should be made smooth.

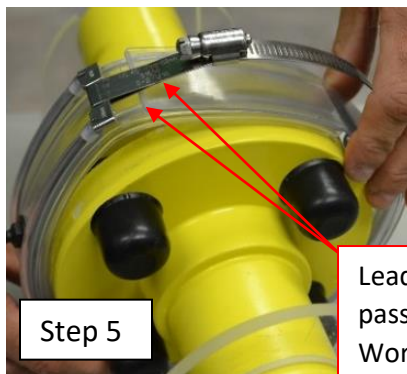


2. **Grease Flange OD:** To reduce friction during installation, apply a light coat of grease to outer diameter surface of flange. Also apply a light coat of grease under the clear bridge plate (see layout). Use only Kleergel grease or approved equivalent.

3. **Large flange gaps:** Can be filled with grease before installing Kleerband, but be sure grease is packed well and smooth so the injected grease can push air out Relief Valve. Air pockets may prevent proper flow of grease when injecting through fittings.



4. **Installing on Flange:** Wrap Kleerband around flange OD and fasten together SS worm gear screw with strip. Join ends of Kleerband as shown. The clear bridge plate must be between flexible band and worm gear(s). See back of page for detail layout.



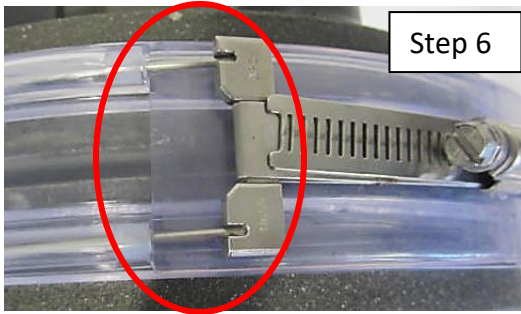
5. **Tightening:** Tighten screw until Kleerband ends are abutted. **Note:** Kleerband is designed to be larger than Flange OD to insure proper sealing. **For smaller sizes:** Wrap Kleerband around pipe next to flange OD, join ends as stated above, and slide over flange.

Leading edge of Bridge Plate must pass under spot welded edge of Worm Gear. (See Diagram, pg 2)



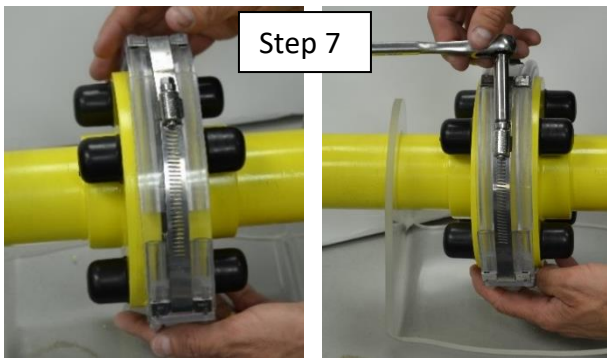
ADVANCE PRODUCTS & SYSTEMS, LLC

P.O. Box 60399
Lafayette, Louisiana 70596-0399
Toll Free: (800) 315-6009
Phone: (337) 233-6116
Fax: (337) 232-3860
Email: sales@apsonline.com
www.apsonline.com
ISO 9001 Certified



Step 6

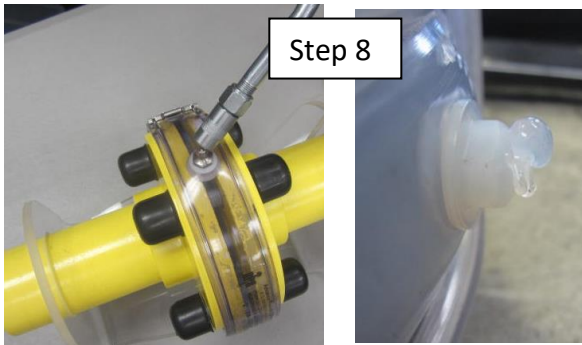
6. **Checks:** Prior to final tightening of the SS worm gears:
 - a. Band should be placed evenly over flange gap, and the grease fittings should be accessible.
 - b. Bridge plate must be under the full length of the Worm Gears, as shown on left. *Note: Leading edge of Bridge plate must pass under spot welded edge of Worm Gear.



Step 7

7. **Final Torque:** Fully tighten the SS worm gear. For multiple worm gears, tighten worm gears evenly and incrementally around the Kleerband.

Final Torque: 25-35 in-lbs

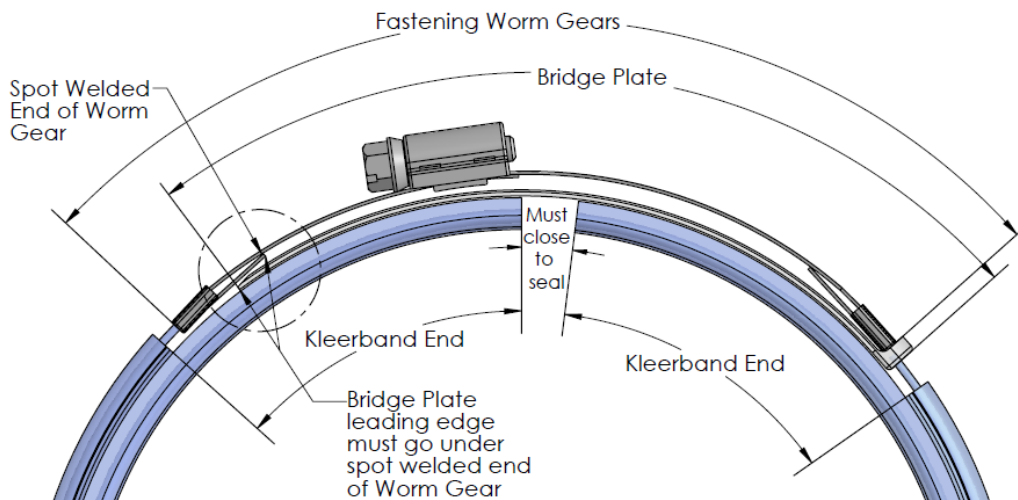


Step 8

8. **Inject Grease:** Pump the Kleergel into the grease zerks until grease comes out of relief valve. For multiple zerks, work around perimeter of flange until grease comes out of all relief valves. Some grease may continue to flow out of valve after injection due to internal grease injection pressure.

Kleerband Layout

Worm Gears / Bridge Plate / Kleerband Ends



Kleerband w/ D-Seals

Rev 040120