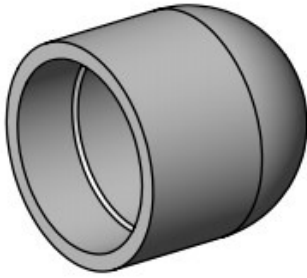
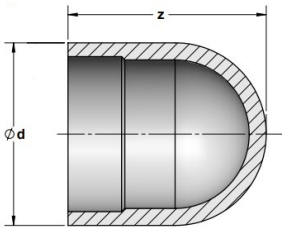


**BUTT FITTINGS END CAPS:  
PE2708, IPS, DR11 Style 1**



- Approval: ASTM D2513
- Approval: ASTM D3261
- Approval: CSA B137.4 (indicated with \*)

Size (inch)	GF Code	weight (lb)	CSA	d (inch)	z (inch)	Box Qty
¾	<b>360 000 315</b>	0.0	*	1.05	2.08	100
1	<b>360 000 319</b>	0.0	*	1.32	2.14	100
1 ½	<b>360 000 323</b>	0.1		1.90	2.55	50
2	<b>360 000 335</b>	0.2	*	2.38	2.94	40
12	<b>360 019 914</b>	18.7		12.75	12.25	1



The technical data are not binding. They neither constitute expressly warranted characteristics nor guaranteed properties nor a guaranteed durability. They are subject to modification. Our General Terms of Sale apply.

Georg Fischer Piping Systems Ltd, Postfach, CH-8201 Schaffhausen/Switzerland

Phone +41 -(0)52-631 1111

e-mail: [info.ps@georgfischer.com](mailto:info.ps@georgfischer.com)

Internet: <http://www.gfps.com>